

Control Valve

Cycle Gard® I

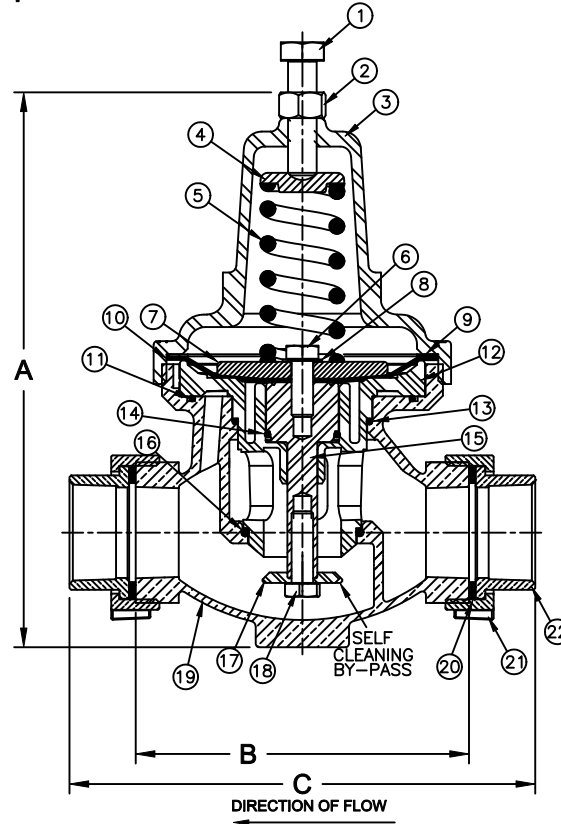
Model C152E



Flomatic Corporation

Sizes 1-1/2" & 2" / 40 mm & 50 mm
Direct Acting Pump Control

Materials



Item #	Qty	Description	Material	Item #	Qty	Description	Material
1	1	Adjusting Screw	Steel	12	1	Cartridge	Delrin 500P
2	1	Jam Nut	Steel	13	1	O'Ring	Buna-n
3	1	Cover	Bronze C83600	14	1	O-Ring	Buna-n
4	1	Spring Button	DI 65-45-12	15	1	Stem	Stainless Steel 304
5	1	Spring	Steel	16	1	O-Ring	Buna-n
6	1	HHCS	Stainless Steel 18-8	17	1	Disc Slotted	Stainless Steel 304
7	1	Diaphragm Plate	DI 65-45-12	18	1	HHCS	Stainless Steel 18-8
8	1	Tooth Lock Washer	Stainless Steel 18-8	19	1	Body	Bronze C89833
9	1	Friction Ring	Brass C36000	20	2	Union End Disc	Buna-n
10	1	Diaphragm	Nitrile/Nylon	21	2	Union End Nut	Bronze C89833
11	1	O'Ring	Buna-n	22	2	Union End	Bronze C89833

Part Number C152003E/C152004E 15-75 psi
Part Number C152103E/C152104E 15-150 psi

Dimensions

Max Temp: 180°F (82°C)
Max Inlet Pressure 400psi (27bar)

Size		Part #	A		B		C		Weight	
inch	mm		inch	mm	inch	mm	inch	mm	lbs	kg
1-1/2	40	C152003E	9-15/16	252	5-13/16	148	8-1/4	209	15.5	7.1
2	50	C152004E	9-15/16	252	5-13/16	148	8-1/8	206	16.8	7.6

Danfoss Flomatic can accept no responsibility for possible errors in catalogues, brochures and other printed material. Danfoss Flomatic reserves the right to alter its products without notices. This also applies to product already agreed. All trademarks in this material are property of the respective companies. All right reserved. ©2010 Danfoss Flomatic Corporation. The drawings & information on this drawing sheet are the sole & exclusive property of Danfoss Flomatic Corporation. Any reproduction, distribution, display or use of these drawings or information in whole or in part without written authorization of Danfoss Flomatic Corp is strictly prohibited.



October 17, 2004
Dwg No: C152003E Rev: D (6/11)

FLOMATIC CORPORATION
GLENS FALLS, N.Y. 12801
PHONE (518) 761-9797
FAX (518) 761-9798