

Control Valve

NPT

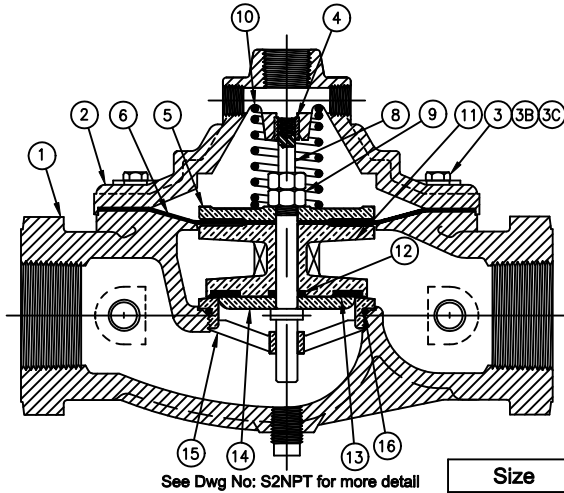
Model C101N



Fromatic Corporation

Sizes 1-1/2" & 2" / 40 mm & 50 mm

Main Valve



See Dwg No: S2NPT for more detail

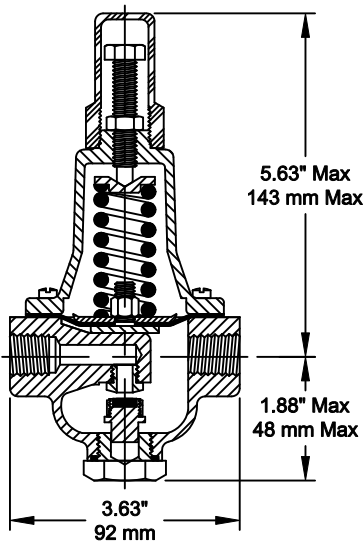
Size	Pumping Rate
1-1/2" 40 mm	15-75 gpm
2" 50 mm	25-125 gpm

Item #	Qty	Description	Material	ASTM
1	1	Body (W/ Tag & Plug)	Ductile Iron	A-536
2	1	Cover	Ductile Iron	A-536
3	8	Cover Bolt	Stainless Steel	18-8
3B	8	Cover Washer	Stainless Steel	18-8
3C	8	Cover Nut	Stainless Steel	18-8
4	1	Cover Bushing*	Bronze*	B140-83
5	1	Diaphragm Plate*	Unleaded Bronze*	C89833
6	1	Diaphragm	Nitrile/Nylon	-----
8	1	Stem	Stainless Steel	304
9	2	Jam Nut	Stainless Steel	18-8
10	1	Spring	Stainless Steel	302
11	1	Spool*	Unleaded Bronze*	C89833
12	1	Spool O'Ring (Stem O'Ring)**	Buna-n**	-----
13	1	Spool Seal (Seat Seal)**	Buna-n**	-----
14	1	Seat Plate*	Unleaded Bronze*	C89833
15	1	Seat Ring*	Unleaded Bronze*	C89833
16	1	Seat O'Ring**	Buna-n**	-----

*OPTIONAL 316 STAINLESS STEEL AVAILABLE

**OPTIONAL VITON AVAILABLE

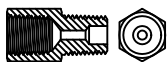
Pilot Valve



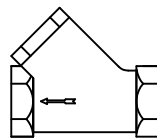
PILOT TYPE			
PSI RANGE	FACTORY SET @ PSI	SPRING NUMBER	ASSEMBLY NUMBER
5-80	30	9600397A	152100A
25-175	60	9600397B	152100B
2-35	30	9600397C	152100C
30-400	60	9600397D	152100D

Accessories

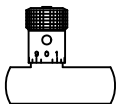
ORIFICE



Y-STRAINER



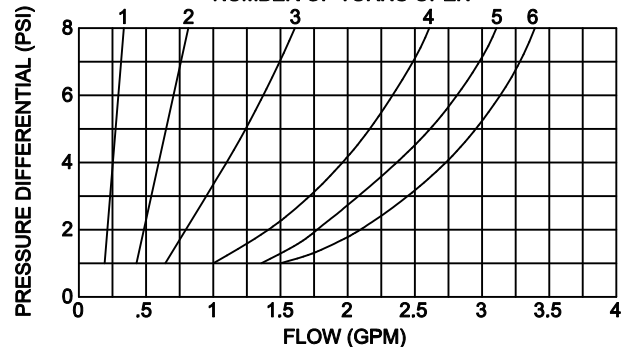
NEEDLE VALVE



VALVE SIZE	FACTORY SETTING TURNS OPEN
1"	3
1-1/2"	3
2"	4
2-1/2"	4
3"	5

- 1: To reduce cycling of pump, reduce flow thru bypass needle valve.
- 2: To reduce the rise in pressure at the pump discharge just prior to shut off, increase flow thru bypass needle valve.

NEEDLE VALVE FLOW CHART
NUMBER OF TURNS OPEN



Fromatic Corporation can accept no responsibility for possible errors in catalogues, brochures and other printed material. Fromatic Corporation reserves the right to alter its products without notices. This also applies to product already agreed. All trademarks in this material are property of the respective companies. All right reserved. ©2011 Fromatic Corporation. The drawings & information on this drawing sheet are the sole & exclusive property of Fromatic Corporation. Any reproduction, distribution, display or use of these drawings or information in whole or in part without written authorization of Fromatic Corporation is strictly prohibited.



July 14, 2003
Dwg No: scyclespec2 Rev: C (6/11)

FLOMATIC CORPORATION
GLENS FALLS, N.Y. 12801
PHONE (518) 761-9797
FAX (518) 761-9798