

Backflow Preventer

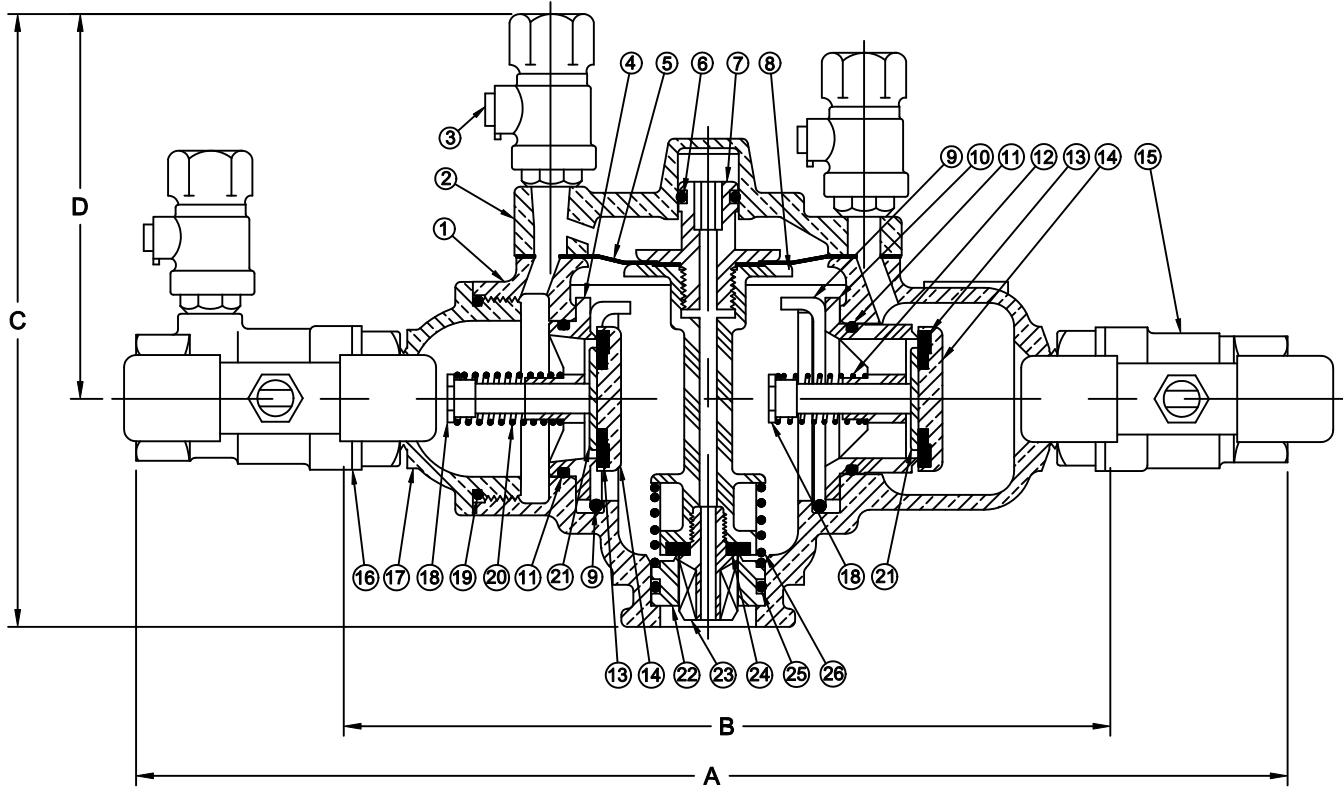
Model RPZE



Flomatic Corporation

Sizes 3/4" & 1" / 20 mm & 25 mm

Materials



Item #	Qty	Description	Material	ASTM	Item #	Qty	Description	Material	ASTM
1	1	Body	Unleaded Bronze	C89833	15	1	Ball Valve	Unleaded Bronze	C90500
2	1	Cover	Unleaded Bronze	C89833	16	1	Ball Valve w/ Test Boss	Unleaded Bronze	C90500
3	4	Testcock	Unleaded Bronze	C90500	17	1	Body Tailpiece	Unleaded Bronze	C89833
4	1	1st CV Seat Ring	Noryl GFN2-780S	-----	18	2	CV Stem	Bronze	B140
5	1	Diaphragm	Nitrile/Nylon	-----	19	1	Tailpiece O'Ring	Buna-n	-----
6	1	RV Piston O'Ring	Silicone Rubber	-----	20	1	1st CV Spring	Stainless Steel	302
7	1	RV Piston	Noryl GFN2-780S	-----	21	2	CV Disc Retainer	Stainless Steel	304
8	1	RV Stem	Noryl GFN2-780S	-----	22	1	RV Seat	Stainless Steel	304
9	2	CV Spring Clip	Stainless Steel	302	23	1	RV Disc Retainer	Noryl GFN2-780S	-----
10	1	2nd CV Seat Ring	Noryl GFN2-780S	-----	24	1	RV Disc	Silicone Rubber	-----
11	2	CV O'Ring	Buna-n	-----	25	1	RV Seat O'Ring	Buna-n	-----
12	1	2nd CV Valve Spring	Stainless Steel	302	26	1	RV Spring	Stainless Steel	302
13	2	CV Disc	Silicone Rubber	-----	27	4	Bolt	Stainless Steel	18-8
14	2	CV Disc Holder	Bronze	B140	CV = Check Valve RV = Relief Valve				

Also available with BSPP & JIS threads less ball valves

Flomatic Corporation can accept no responsibility for possible errors in catalogues, brochures and other printed material. Flomatic Corporation reserves the right to alter its products without notices. This also applies to product already agreed. All trademarks in this material are property of the respective companies. All right reserved. ©2011 Flomatic Corporation. The drawings & information on this drawing sheet are the sole & exclusive property of Flomatic Corporation. Any reproduction, distribution, display or use of these drawings or information in whole or in part without written authorization of Flomatic Corporation is strictly prohibited.

