

Backflow Preventer

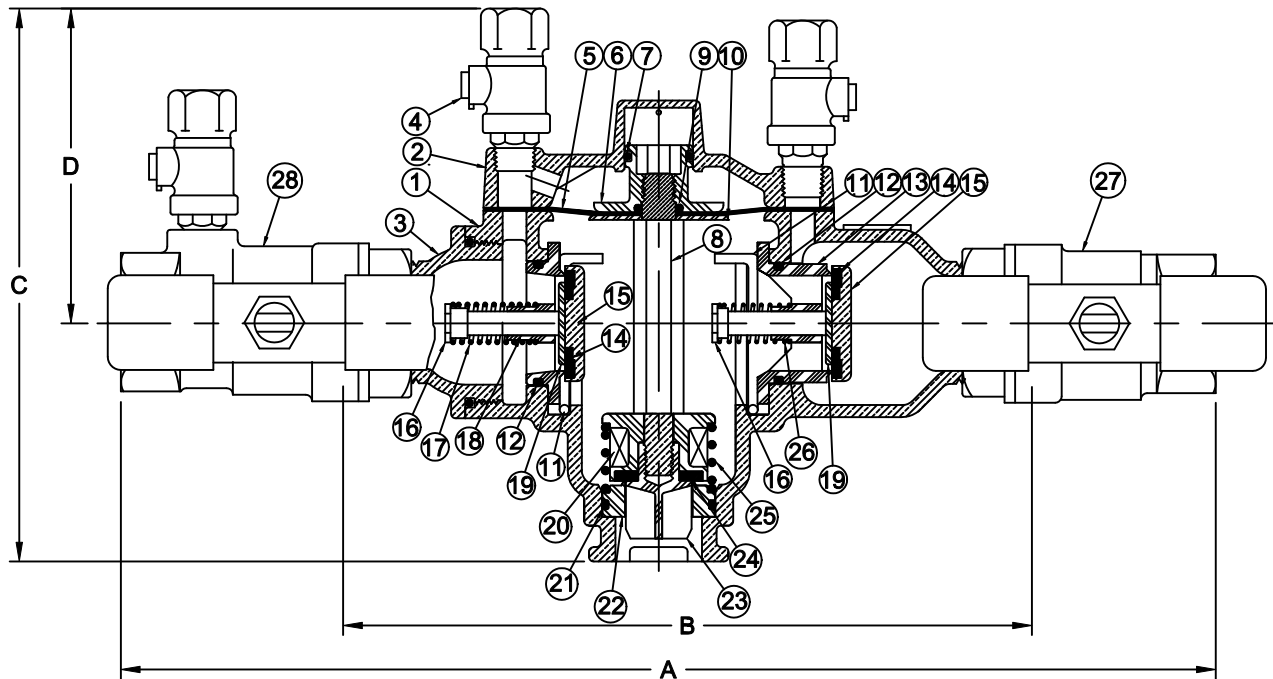
Sizes 1-1/4" / 32mm

Model RPZE



Flomatic Corporation

Materials



Item #	Qty	Description	Material	ASTM	Item #	Qty	Description	Material	ASTM
1	1	Body	Unleaded Bronze	C89833	16	2	CV Stem	Bronze	B140
2	1	Cover	Unleaded Bronze	C89833	17	1	1st CV Valve Spring	Stainless Steel	302
3	1	Tailpiece	Unleaded Bronze	C89833	18	1	1st CV Seat Ring	Noryl GFN2-780S	-----
4	3	Testcock	Unleaded Bronze	C90500	19	2	CV Disc Retainer	Stainless Steel	304
5	1	Diaphragm	Nitrile/Nylon	-----	20	1	RV Disc Holder	Noryl GFN2-780S	-----
6	1	RV Piston	Noryl GFN2-780S	-----	21	1	RV Seat O'Ring	Buna-n	-----
7	1	RV Piston O'Ring	Silicone Rubber	-----	22	1	RV Seat	Stainless Steel	304
8	1	RV Stem	Alloy 314	-----	23	1	RV Disc Retainer	Noryl GFN2-780S	-----
9	1	RV Stem O'Ring	Buna-n	-----	24	1	RV Disc	Silicone Rubber	-----
10	1	RV Diaphragm Plate	Stainless Steel	304	25	1	RV Spring	Stainless Steel	302
11	2	CV Spring Clip	Stainless Steel	302	26	1	2nd CV Spring	Stainless Steel	302
12	2	CV O'Ring	Buna-n	-----	27	1	Ball Valve	Unleaded Bronze	C90500
13	1	2nd CV Seat Ring	Noryl GFN2-780S	-----	28	1	Ball Valve w/ Test Boss	Unleaded Bronze	C90500
14	2	CV Disc	Silicone Rubber	-----	29	6	Bolt	Stainless Steel	18-8
15	2	CV Disc Holder	Bronze	B140					

CV = Check Valve
RV = Relief Valve

Also available with BSPP & JIS threads less ball valves

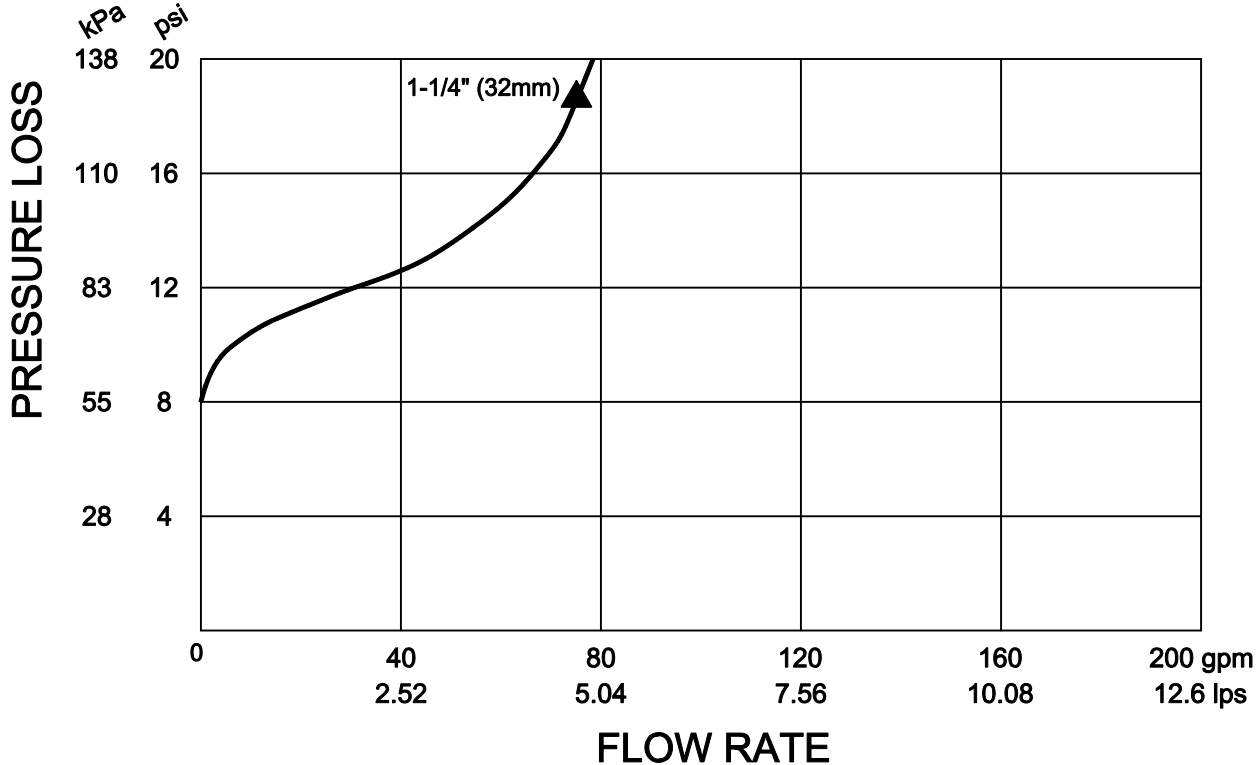
Flomatic Corporation can accept no responsibility for possible errors in catalogues, brochures and other printed material. Flomatic Corporation reserves the right to alter its products without notices. This also applies to product already agreed. All trademarks in this material are property of the respective companies. All right reserved. ©2011 Flomatic Corporation. The drawings & information on this drawing sheet are the sole & exclusive property of Flomatic Corporation. Any reproduction, distribution, display or use of these drawings or information in whole or in part without written authorization of Flomatic Corporation is strictly prohibited.





Headloss

FLOW CURVES w/ BALL VALVES



Warning

For products sold in California
Not For Use in Drinking Water Systems

For more information on California Proposition 65 contact
www.oehha.org/prop65/background

Danfoss Flomatic Corporation
 Glens Falls, NY
www.danfossflomatic.com

Dimensions

Max Temp 180°F (82°C)
 Max Pressure 175psi (12bar)

Size		Part #	A		B		C		D		Wgt with BV		Wgt less BV	
Inch	mm		Inch	mm	Inch	mm	Inch	mm	Inch	mm	lbs	kg	lbs	kg
1-1/4	32	B9202E	14-3/8	365	9	229	7-1/4	184	4-1/8	105	13	6	8.5	4

Flomatic Corporation can accept no responsibility for possible errors in catalogues, brochures and other printed material. Flomatic Corporation reserves the right to alter its products without notices. This also applies to product already agreed. All trademarks in this material are property of the respective companies. All right reserved. ©2011 Flomatic Corporation. The drawings & information on this drawing sheet are the sole & exclusive property of Flomatic Corporation. Any reproduction, distribution, display or use of these drawings or information in whole or in part without written authorization of Flomatic Corporation is strictly prohibited.