

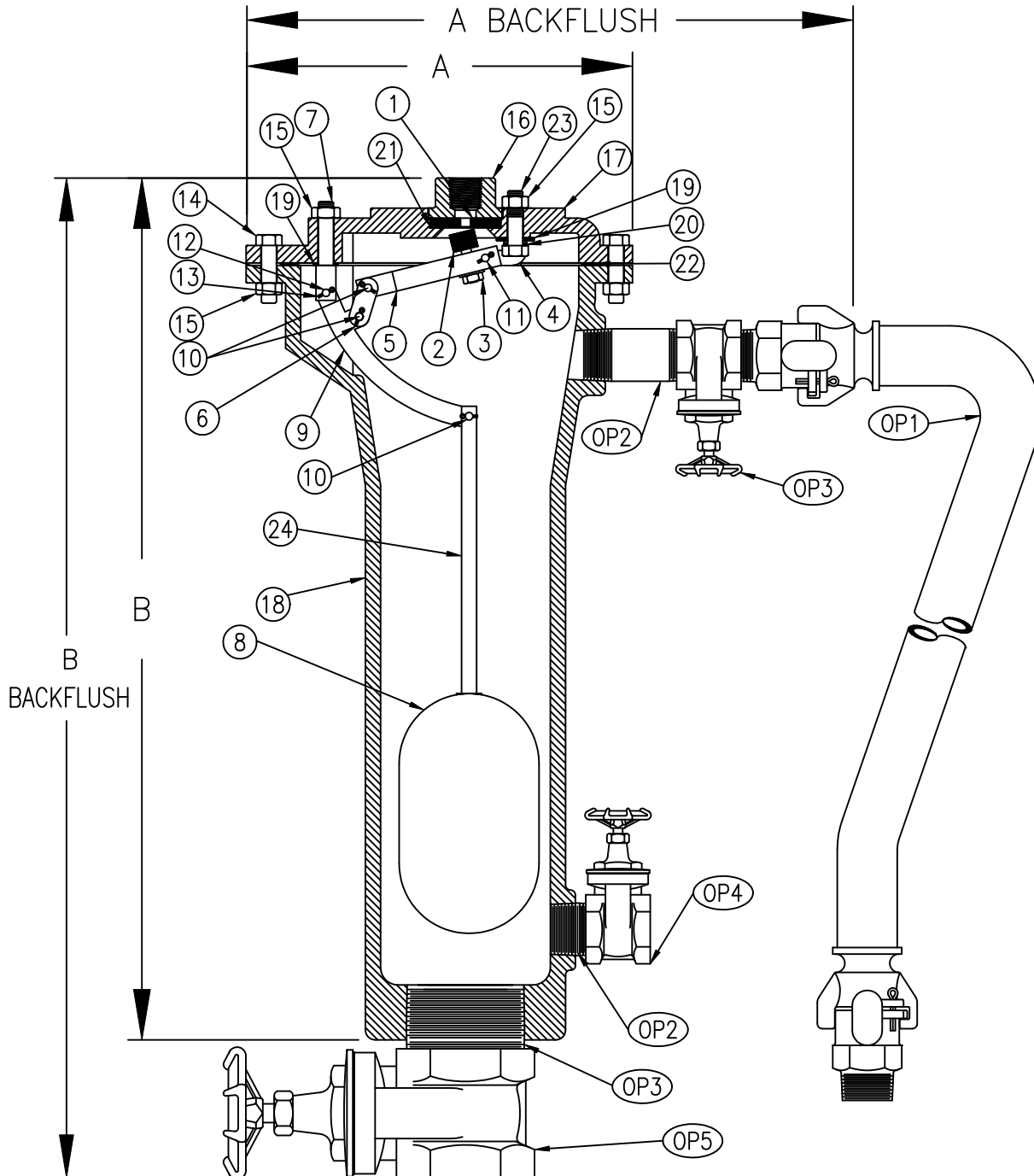
Air Release Valve

Size 2" & 3" / 50mm & 75mm

Sewair-Mini® **FLOMATIC**®

Flomatic Corporation

Materials



Drawing Shown with Optional Backflush

Flomatic Corporation can accept no responsibility for possible errors in catalogues, brochures and other printed material. Flomatic Corporation reserves the right to alter its products without notices. This also applies to product already agreed. All trademarks in this material are property of the respective companies. All right reserved. ©2011 Flomatic Corporation. The drawings & information on this drawing sheet are the sole & exclusive property of Flomatic Corporation. Any reproduction, distribution, display or use of these drawings or information in whole or in part without written authorization of Flomatic Corporation is strictly prohibited.

Air Release Valve

Size 2" & 3" / 50mm & 75mm

Flomatic Corporation

Materials

Optional Backflush			
Item #	Description	Material	ASTM
OP1	Backflush Assembly	See SBF2-3	-----
OP2	Nipple	Steel	A53
OP3	Nipple	Steel	A53
OP4	Shut-Off Valve	Brass	N/A
OP5	Shut-Off Valve	Brass	N/A

ORIFICE DIA.	MAX WORKING PRESSURE
1/8"	300 PSIG
1/4"	150 PSIG

Item #	Description	Material	ASTM	Item #	Description	Material	ASTM
1	Seat	PVC	1784	13	Cotter Pin	Stainless Steel	A240
2	Valve Plunger	Buna-n/SS	D2000/A193	14	Bolt	Steel	A307
3	Nut	Stainless Steel	A194	15	Nut	Steel	A563
4	Valve Fulcrum	Stainless Steel	A240	16	*Top	Cast Iron	A126
5	Valve Lever	Stainless Steel	A582	17	*Flange	Cast Iron	A126
6	Link	Stainless Steel	A240	18	*Body	Cast Iron	A126
7	Ball Fulcrum	Stainless Steel	A582	19	Fulcrum Washer	Fibre	D710
8	Float	Stainless Steel	A240	20	Fulcrum Washer	Fibre	D710
9	Ball Lever	Stainless Steel	A240	21	Seat Washer	Fibre	D2000
10	Bearing Pin	Stainless Steel	A582	22	Flange Gasket	Armstrong	N-8090
11	Bearing Pin	Stainless Steel	A582	23	Bolt	Stainless Steel	A193
12	Bearing Pin	Stainless Steel	A582	24	Float Rod	Stainless Steel	A582

*Optional Material Ductile Iron
Drawing Shown with Optional Backflush

Dimensions

Max. Temp 150°F (65C)

Size		Part #	A		A with Backflush		B		B with Backflush		Inlet Size		Outlet Size		Weight		Weight with Backflush	
Inch	mm		Inch	mm	Inch	mm	Inch	mm	Inch	mm	Inch	mm	Inch	mm	lbs	kg	lbs	kg
2	50	6600	9-11/16	246	11-1/4	286	21-1/2	546	25-1/4	641	2	50	1/2	15	49	23	60	28
3	75	6601	9-11/16	246	11-1/4	286	21-1/2	546	27-1/4	692	3	75	1/2	15	49	23	66	30

Flomatic Corporation can accept no responsibility for possible errors in catalogues, brochures and other printed material. Flomatic Corporation reserves the right to alter its products without notices. This also applies to product already agreed. All trademarks in this material are property of the respective companies. All right reserved. ©2011 Flomatic Corporation. The drawings & information on this drawing sheet are the sole & exclusive property of Flomatic Corporation. Any reproduction, distribution, display or use of these drawings or information in whole or in part without written authorization of Flomatic Corporation is strictly prohibited.