

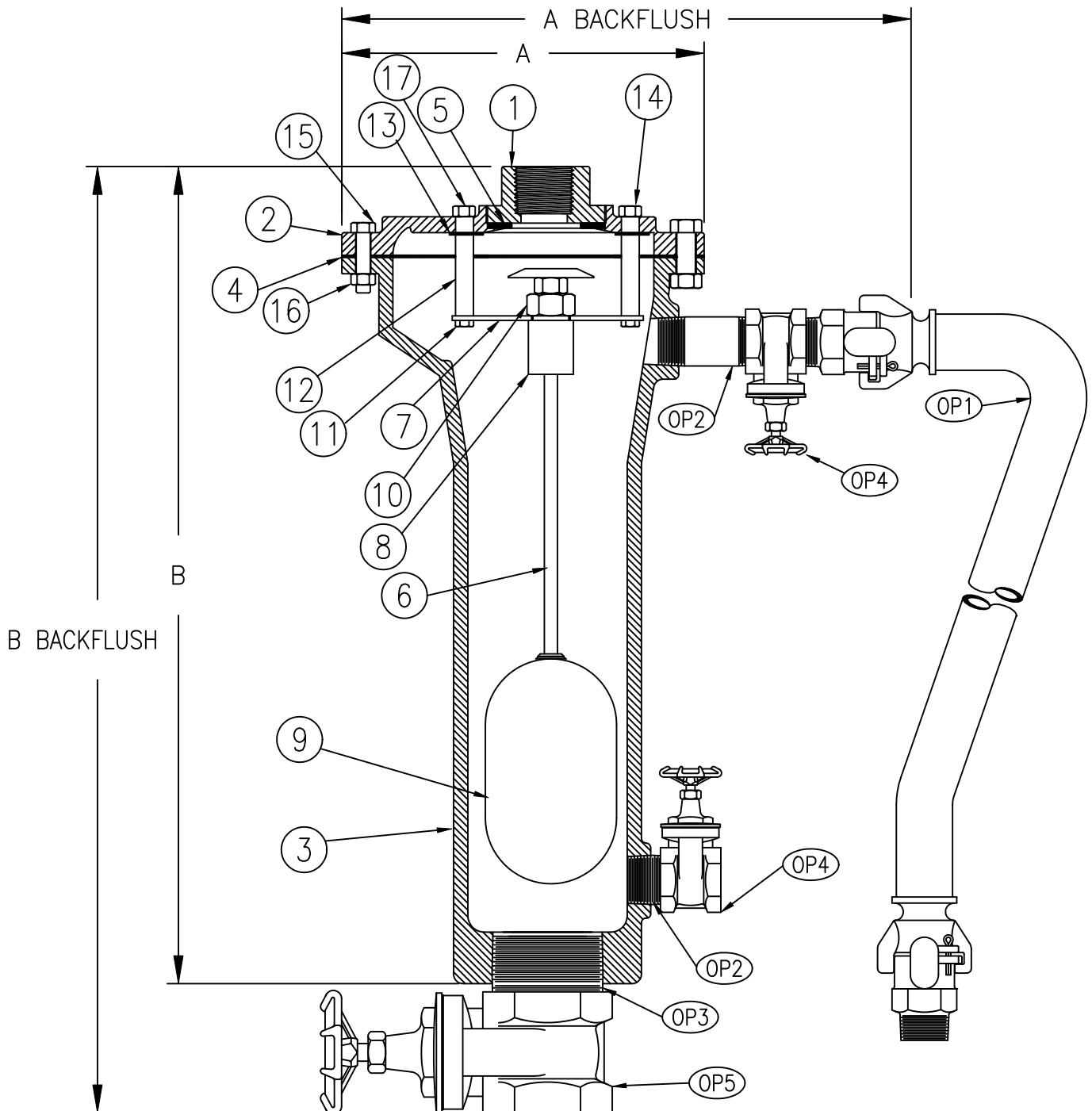
Air Release Valve

Size 2" & 3" / 50mm & 75mm

Sewair-Maxi® **FLOMATIC**®

Flomatic Corporation

Materials



Drawing Shown with Optional Backflush

Flomatic Corporation can accept no responsibility for possible errors in catalogues, brochures and other printed material. Flomatic Corporation reserves the right to alter its products without notices. This also applies to product already agreed. All trademarks in this material are property of the respective companies. All right reserved. ©2011 Flomatic Corporation. The drawings & information on this drawing sheet are the sole & exclusive property of Flomatic Corporation. Any reproduction, distribution, display or use of these drawings or information in whole or in part without written authorization of Flomatic Corporation is strictly prohibited.

Air Release Valve

Size 2" & 3" / 50mm & 75mm

Flomatic Corporation

Materials

Optional Backflush			
Item #	Description	Material	ASTM
OP1	Backflush Assembly	See SBF2-3	-----
OP2	Nipple	Steel	A53
OP3	Nipple	Steel	A53
OP4	Shut-Off Valve	Brass	N/A
OP5	Shut-Off Valve	Brass	N/A

Item #	Description	Material	ASTM	Item #	Description	Material	ASTM
1	*Top	Cast Iron	A126	10	Jam Nut	Stainless Steel	A276
2	*Flange	Cast Iron	A126	11	Screw	Stainless Steel	A276
3	*Body	Cast Iron	A126	12	Stand Rod	Stainless Steel	A582
4	Flange Gasket	Armstrong	N-8092	13	Stand Rod Gasket	Fibre	-----
5	Seat	Buna-n	D2000	14	Stand Rod Nut	Steel	D2000
6	Float Rod	Stainless Steel	A582	15	Bolt	Steel	A563
7	Rod Guide Stand	Stainless Steel	A240	16	Nut	Steel	J429
8	Float Rod Guide	Nylantron	-----	17	Bolt	Steel	A563
9	Float	Stainless Steel	A240	*Optional Material Ductile Iron Drawing Shown with Optional Backflush			

Dimensions

Max. Temp 150°F (65C)
Max. Inlet Pressure 300 psi (21 bar)

Size		Part #	A		A with Backflush		B		B with Backflush		Inlet Size		Outlet Size		Weight		Weight with Backflush	
Inch	mm		Inch	mm	Inch	mm	Inch	mm	Inch	mm	Inch	mm	Inch	mm	lbs	kg	lbs	kg
2	50	6620	9-11/16	246	11-3/4	299	21-1/2	546	25-1/4	641	2	50	1	25	49	23	60	28
2	50	6621	10-1/4	260	13-1/2	343	25-1/2	648	29-1/4	743	2	50	2	50	93	43	105	48
3	75	662	10	254	13-1/2	343	21-3/4	552	27-1/4	692	3	75	3	75	100	46	117	53

Flomatic Corporation can accept no responsibility for possible errors in catalogues, brochures and other printed material. Flomatic Corporation reserves the right to alter its products without notices. This also applies to product already agreed. All trademarks in this material are property of the respective companies. All right reserved. ©2011 Flomatic Corporation. The drawings & information on this drawing sheet are the sole & exclusive property of Flomatic Corporation. Any reproduction, distribution, display or use of these drawings or information in whole or in part without written authorization of Flomatic Corporation is strictly prohibited.