

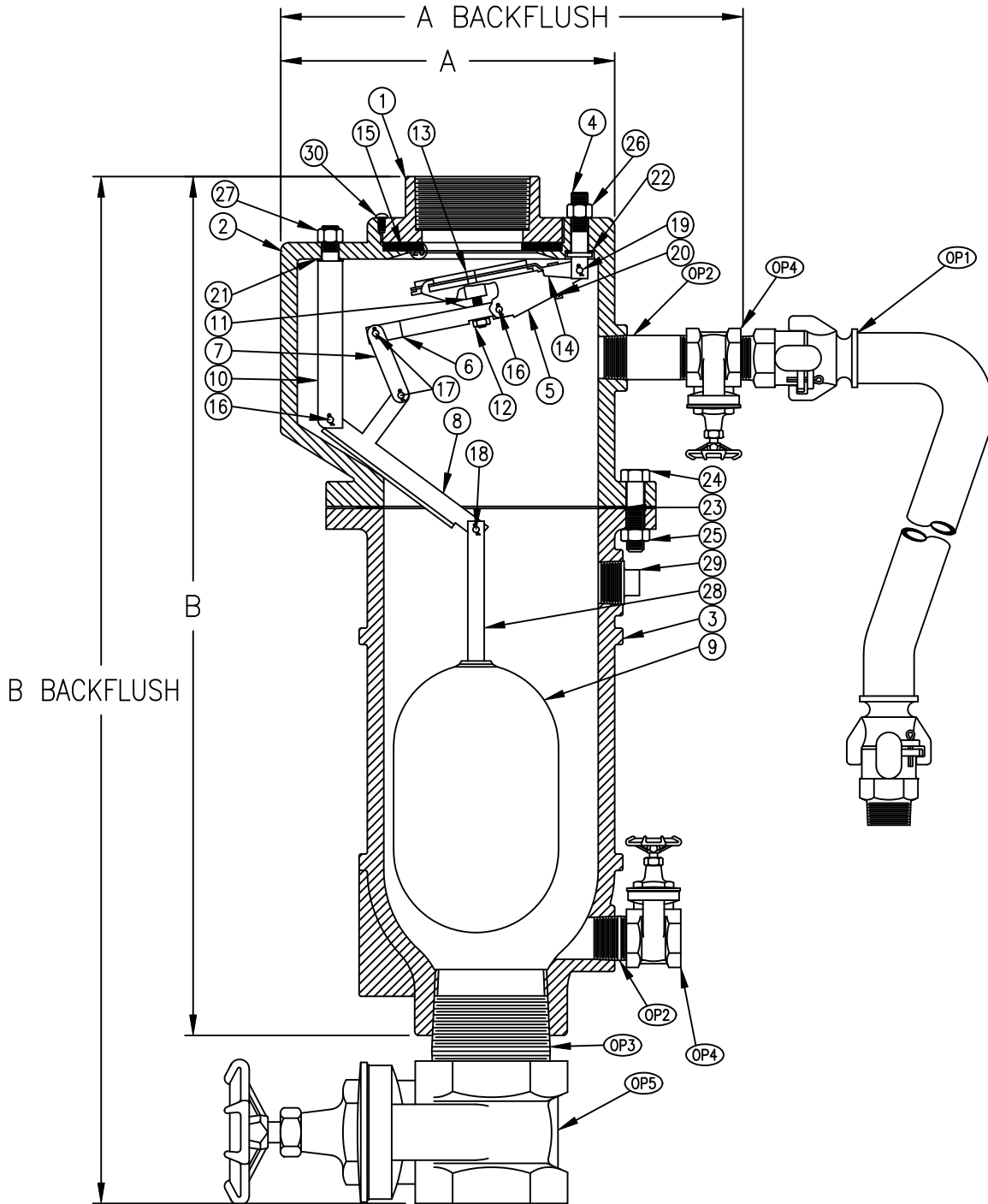
# Air Release Valve

Size 2" & 3" / 50mm & 75mm

Sewair-Combo® **FLOMATIC**®

Flomatic Corporation

## Materials



Drawing Shown with Optional Backflush

Flomatic Corporation can accept no responsibility for possible errors in catalogues, brochures and other printed material. Flomatic Corporation reserves the right to alter its products without notices. This also applies to product already agreed. All trademarks in this material are property of the respective companies. All right reserved. ©2011 Flomatic Corporation. The drawings & information on this drawing sheet are the sole & exclusive property of Flomatic Corporation. Any reproduction, distribution, display or use of these drawings or information in whole or in part without written authorization of Flomatic Corporation is strictly prohibited.

# Air Release Valve

Size 2" & 3" / 50mm & 75mm

Sewair-Combo® **FLOMATIC®**

Flomatic Corporation

## Materials

Optional Backflush			
Item #	Description	Material	ASTM
OP1	Backflush Assembly	See SBF2-3	-----
OP2	Nipple	Steel	A53
OP3	Nipple	Steel	A53
OP4	Shut-Off Valve	Brass	N/A
OP5	Shut-Off Valve	Brass	N/A

Optional Orifice Ø p/n 6650	Max. Working Pressure
3/16"	150 PSIG
3/32"	300 PSIG

Optional Orifice Ø p/n 6651 & 6652	Max. Working Pressure
1/4"	150 PSIG
1/8"	300 PSIG

Item #	Description	Material	ASTM	Item #	Description	Material	ASTM
1	*Top	Cast Iron	A126	16	Bearing Pin	Stainless Steel	A582
2	*Flange	Cast Iron	A126	17	Bearing Pin	Stainless Steel	A582
3	*Body	Cast Iron	A126	18	Bearing Pin	Stainless Steel	A582
4	A&V Fulcrum	Stainless Steel	A240	19	Bearing Pin	Stainless Steel	A582
5	Pressure Fulcrum	Stainless Steel	A240	20	Bearing Pin Clip	Stainless Steel	A313
6	Valve Lever	Stainless Steel	A240	21	Fulcrum Washer	Fibre	D710
7	Link	Stainless Steel	A240	22	Fulcrum Washer	Fibre	D710
8	Ball Lever	Stainless Steel	A240	23	Fulcrum Gasket	Armstrong	N-8092
9	Float	Stainless Steel	A240	24	Flange Bolt	Steel	J429
10	Ball Fulcrum	Stainless Steel	A582	25	Flange Nut	Steel	A563
11	Plunger	Buna-n/Stainless Steel	A276	26	A&V Fulcrum Nut	Steel	A563
12	Plunger Nut	Stainless Steel	A276	27	Ball Fulcrum Nut	Steel	A563
13	Pressure Seat	Stainless Steel	A276	28	Ball Float Rod	Stainless Steel	A240/A582
14	Seat Cage	Stainless Steel	A240	29	Flush Plug	Cast Iron	A126
15	A&V Seat	Buna-n	-----	30	Interference Pin	Stainless Steel	18-8

\*Optional Material Ductile Iron  
Drawing Shown with Optional Backflush

Max. Temp 150°F (65C)

## Dimensions

Size		Part #	A		A with Backflush		B		B with Backflush		Inlet Size		Outlet Size		Weight		Weight with Backflush	
Inch	mm		Inch	mm	Inch	mm	Inch	mm	Inch	mm	Inch	mm	Inch	mm	lbs	kg	lbs	kg
2	50	6650	9-3/4	248	11-3/4	299	21-1/2	546	25-1/4	641	2	50	1	25	49	23	61	28
2	50	6651	10-1/4	260	13-1/2	343	25-1/2	648	29-1/4	743	2	50	2	50	90	41	102	47
3	75	6652	10	254	13-1/2	343	21-3/4	553	27-1/4	692	3	75	3	75	100	46	119	54

Flomatic Corporation can accept no responsibility for possible errors in catalogues, brochures and other printed material. Flomatic Corporation reserves the right to alter its products without notices. This also applies to product already agreed. All trademarks in this material are property of the respective companies. All right reserved. ©2011 Flomatic Corporation. The drawings & information on this drawing sheet are the sole & exclusive property of Flomatic Corporation. Any reproduction, distribution, display or use of these drawings or information in whole or in part without written authorization of Flomatic Corporation is strictly prohibited.