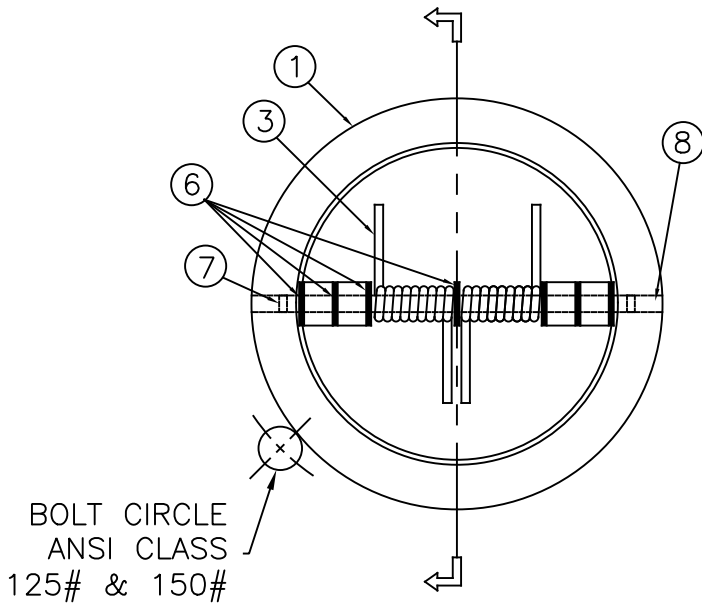
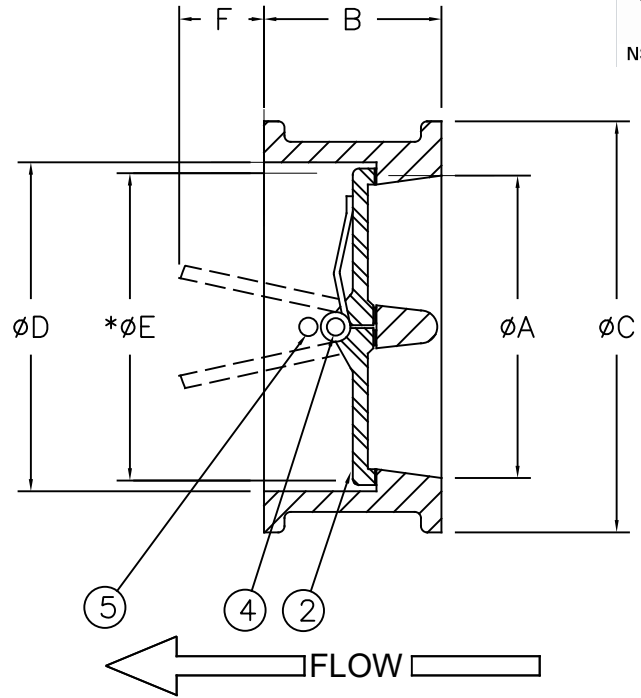




## Materials



BOLT CIRCLE  
ANSI CLASS  
125# & 150#



Max Temp 180°F (80°C)  
Max Inlet Pressure 200 psi (14bar)

Item #	Qty	Description	Material	ASTM
1	1	Body (Epoxy Coated) / Seal Molded to Body	Cast Iron / EPDM	A48, Class 35
2	1	Disc (2 halves)	Stainless Steel	CF8M
3	2	Torsion Spring	Stainless Steel	304
4	1	Disc Hinge Pin	Stainless Steel	304
5	1	Disc Stop Pin	Stainless Steel	304
6	7	Disc Bearing	PTFE	-----
7	2	Gasket	Buna-N	-----
8	2	Screw	Carbon Steel	-----

## Dimensions

\*MIN COMPANION FLANGE BORE

Size		Part #	ØA		B		ØC		ØD		ØE		F		Weight	
inch	mm		inch	mm	inch	mm	inch	mm	inch	mm	inch	mm	inch	mm	lbs	kg
2	50	3000	2.55	65	2.13	54	4.13	105	2.56	65	1.73	44	n/a	n/a	4	1.8
2-1/2	65	3001	3.15	80	2.13	54	4.88	124	3.15	80	2.13	54	.08	2	5	2.3
3	80	3002	3.70	94	2.25	57	5.39	137	3.70	94	2.72	69	.51	13	7	3.0
4	100	3003	4.61	117	2.50	64	6.89	175	4.61	117	3.39	86	.87	22	12	5.2
5	125	3004	5.71	145	2.76	70	7.76	197	5.71	145	4.29	109	1.38	35	15	6.8
6	150	3005	6.70	170	3	76	8.74	222	6.69	170	5.04	128	1.85	47	21	9.2
8	200	3006	8.82	224	3.75	95	11.02	280	8.82	224	7.05	179	2.32	59	36	16
10	250	3007	10.43	265	4.25	108	13.39	340	10.43	265	8.82	224	3.08	78	56	25
12	300	3008	12.28	312	5.63	143	16.14	410	12.28	312	10.55	268	3.23	82	93	42

Flomatic Corporation can accept no responsibility for possible errors in catalogues, brochures and other printed material. Flomatic Corporation reserves the right to alter its products without notices. This also applies to product already agreed. All trademarks in this material are property of the respective companies. All rights reserved. ©2024 Flomatic Corporation. The drawings & information on this drawing sheet are the sole & exclusive property of Flomatic Corporation. Any reproduction, distribution, display or use of these drawings or information in whole or in part without written authorization of Flomatic Corporation is strictly prohibited. [www.flomatic.com](http://www.flomatic.com)