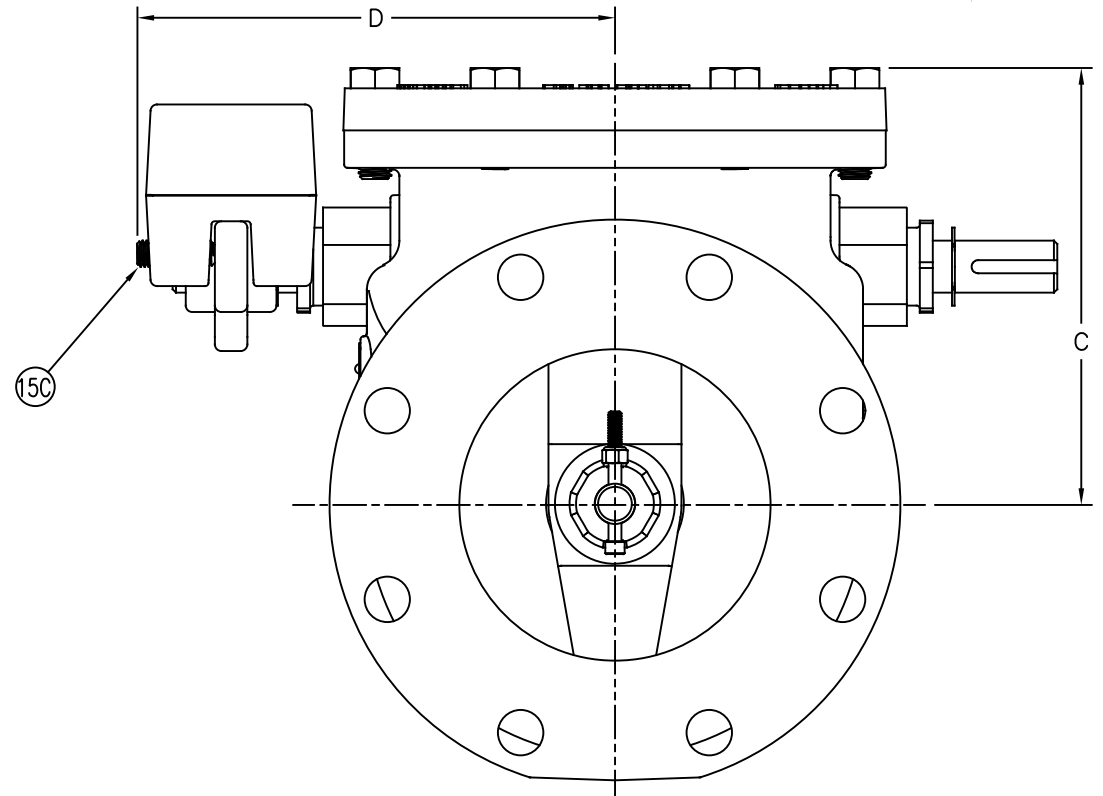
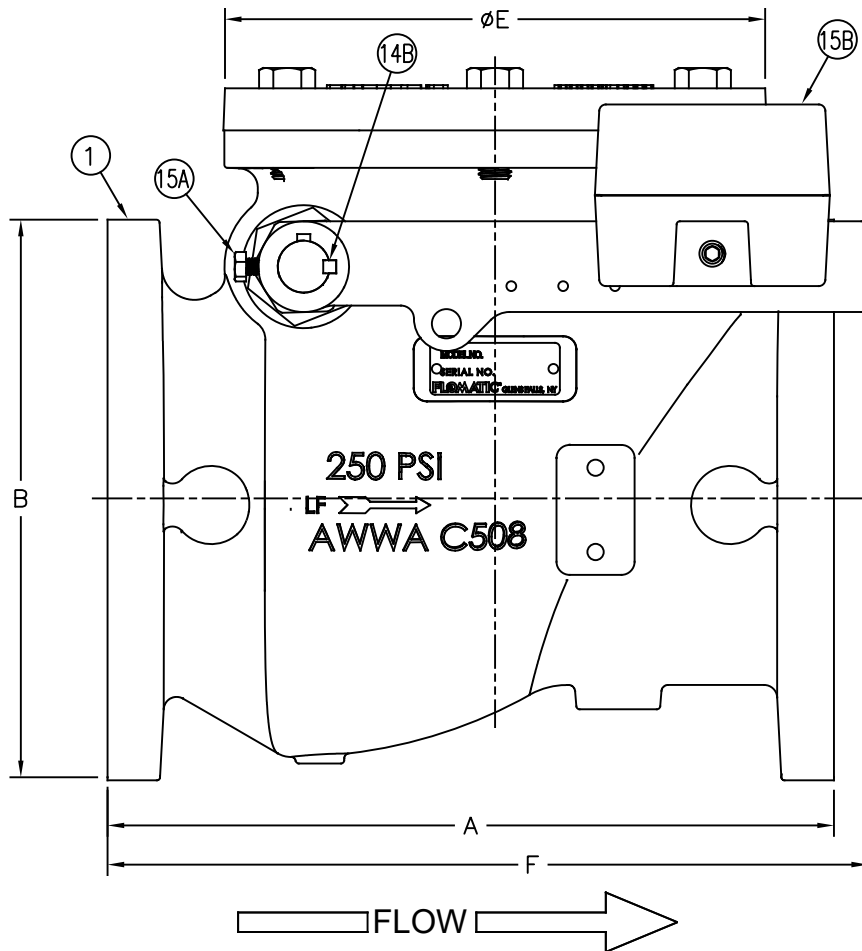


# Swing Check Valves

Sizes 6" / 150 mm  
AIS COMPLIANT

Model 92LW **FLOMATIC**<sup>®</sup>  
Flomatic Corporation



MANUFACTURED IN  
COMPLIANCE WITH  
AWWA C508 STANDARD

Flomatic Corporation can accept no responsibility for possible errors in catalogues, brochures and other printed material. Flomatic Corporation reserves the right to alter its products without notices. This also applies to product already agreed. All trademarks in this material are property of the respective companies. All rights reserved. ©2024 Flomatic Corporation. The drawings & information on this drawing sheet are the sole & exclusive property of Flomatic Corporation. Any reproduction, distribution, display or use of these drawings or information in whole or in part without written authorization of Flomatic Corporation is strictly prohibited. [www.flomatic.com](http://www.flomatic.com)

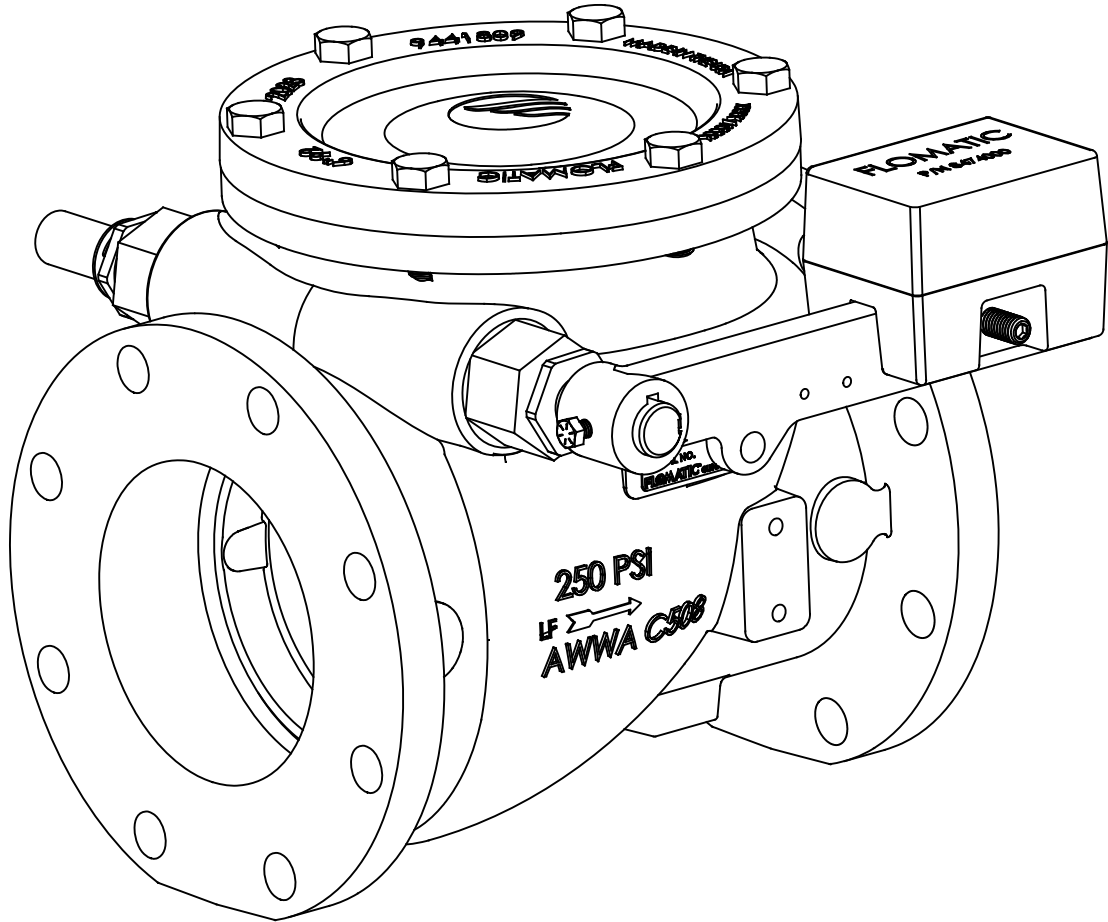
# Swing Check Valve

Sizes 6" / 150 mm  
 AIS COMPLIANT

Model 92LW **FLOMATIC®**

Flomatic Corporation

## Materials (Lever & Weight)



Max Temp 180°F (82°C)  
 Max Pressure 200psi (14bar)

Item #	Qty	Description	Material	ASTM	Item #	Qty	Description	Material	ASTM
1	1	Body*	See spec sheet S3709L		15A	1	Bolt	Stainless Steel	18-8
14B	1	Key Stock	Stainless Steel	18-8	15B	1	Weight*	Steel	-----
15	1	Lever Arm*	Hot Rolled Steel	-----	15C	1	SHSS	Stainless Steel	18-8

\* Epoxy Coated  
 Optional resilient seat (Nitrile) available, add "R" to end of part number

## Dimensions (150# ANSI B16.42 Flanges)

MANUFACTURED IN COMPLIANCE WITH AWWA C508 STANDARD

Size		Part #	A		B		C		D		ØE		F		Weight	
inch	mm		inch	mm	inch	mm	inch	mm	inch	mm	inch	mm	inch	mm	lbs	kg
6	150	3709LW	14	356	10.81	275	8.42	214	9.21	234	10.44	265	14.66	372	146	66

Flomatic Corporation can accept no responsibility for possible errors in catalogues, brochures and other printed material. Flomatic Corporation reserves the right to alter its products without notices. This also applies to product already agreed. All trademarks in this material are property of the respective companies. All rights reserved. ©2024 Flomatic Corporation. The drawings & information on this drawing sheet are the sole & exclusive property of Flomatic Corporation. Any reproduction, distribution, display or use of these drawings or information in whole or in part without written authorization of Flomatic Corporation is strictly prohibited. [www.flomatic.com](http://www.flomatic.com)