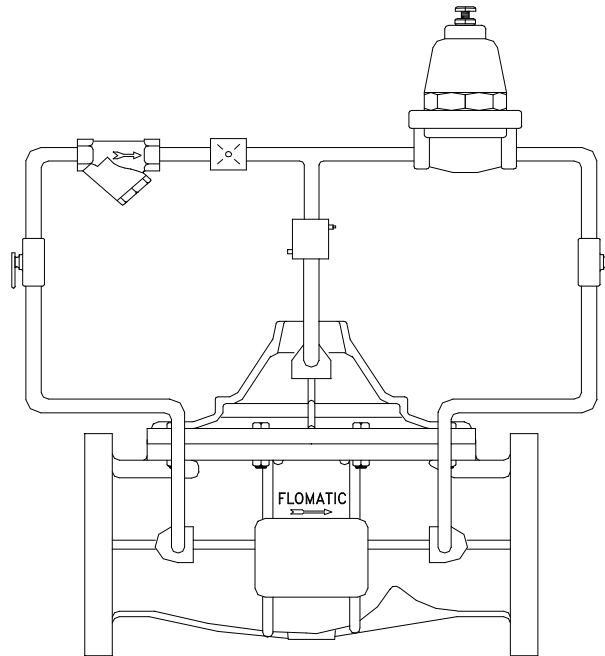




Operation & Maintenance Manual

Place this manual with valve, or person responsible for maintenance of the valve



Model C101/CF101-Pressure Reducing Valve

YOUR PRODUCT INFORMATION:

Model Number: _____

Date: _____

Serial Number: _____

Valve Size: _____

Factory Pilot Preset: _____ *psi*

High Quality Valves Built to Last...

FLOMATIC® VALVES

15 PRUYNS ISLAND
GLENS FALLS, NY 12801

800-833-2040 * 518-761-9797 * Fax: 518-761-9798
Valveactive Fax 800-319-4645 Outside U.S. 518-761-9799
worldwideweb://www.flomatic.com * e-mail: flomatic@flomatic.com

MANUAL: C101
REV: 2

PRESSURE REDUCING VALVE OPERATION

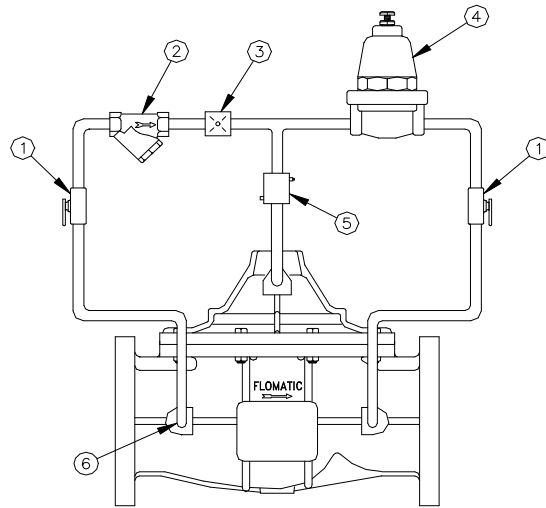
The Model C101/CF101 Pressure Reducing Valve controls and maintains a preset, reduced downstream (outlet) pressure by causing the main valve piston to throttle and sustain the desired reduced pressure regardless of variations in demand and upstream (inlet) pressure.

The throttled position of the main valve piston is controlled by an adjustable pilot valve operating in conjunction with an orifice (or needle valve).

The pilot valve sense the downstream (outlet) pressure and reacts immediately to reposition its piston as the outlet pressure tends to increase or decrease with varying flow demand. The pilot valve piston will automatically sense changes in flow of the system as it continuously controls the main valve to throttle or to open maintain the desired, preset reduced outlet pressure.

Part List

1. Shut-Off Valve (Pilot Isolation Valves)
2. Y-Strainer (Standard 8" and up)*
3. Orifice (Needle Valve)
4. Pilot Valve
5. Flow Control
6. Finger Strainer (Standard 1-1/2" thru 6")



*NOTE: For sizes 1-1/2" thru 6" valves the finger strainer is standard, but may be replaced with an optional Y-Strainer. For sizes 8" and up the Y-Strainer is standard.

SHIPMENT:

When shipped, controls are usually mounted on the main valve. If control subassemblies are shipped separately, all connections are tagged to insure correct assembly. During shipment connections may loosen. Make sure all connections are tight.

INSTALLATION:

1. Flush the pipeline clean, before installing the valve, for proper operation.
2. Install the valve with the "arrow" on body pointing towards the direction of flow (reduced pressure area).
3. Attach subassemblies to main valve if necessary.
4. Allow enough clearance above and around valve for removal of internal parts.

START-UP:

1. Install pressure gauges to inlet and outlet pressures, before pressurizing system.
2. Open main line shut-off valve (usually a gate or butterfly valve) on the outlet side of the main valve about 1/4 open.
3. Slowly open main line shut-off valve on the inlet side and observe pressure gauges. Inlet pressure should not exceed valve pressure rating. When the outlet pressure gauge shows that the downstream pressure (factory pilot preset) is being controlled, this shut-off valve may be opened more rapidly.
4. Open 1/4" air bleeder located on top cover of valve until all air is expelled and steady stream of water is observed.
5. If the outlet pressure requires adjustment, turn the adjusting screw of the pilot valve counter clockwise to decrease, clockwise to increase.

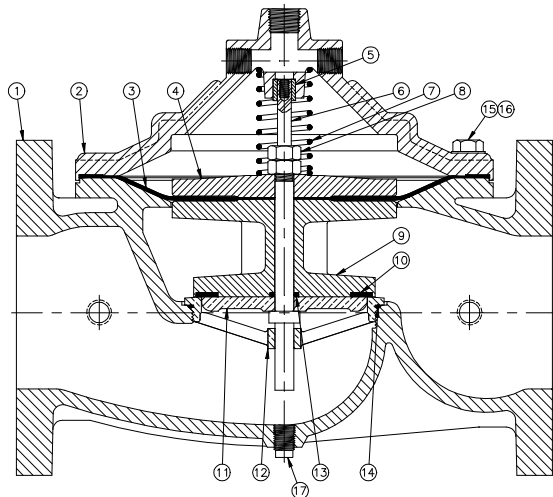


CAUTION: ANY ADJUSTMENT SHOULD BE DONE SLOWLY OR HIGH SURGES AND/OR DAMAGE TO SYSTEM MAY OCCUR!

Information needed to order replacement parts:

Valve Size _____
 Serial # _____
 Model # C101

Main Valve



ITEM	QTY.	DESCRIPTION	MATERIAL
1	1	BODY	DUCTILE IRON
2	1	COVER	DUCTILE IRON
3	1	DIAPHRAGM	NITRILE/NYLON
4	1	DIAPHRAGM PLATE	CAST IRON
5	1	BUSHING	BRONZE
6	1	STEM	STAINLESS STEEL
7	1	SPRING	STAINLESS STEEL
8	2	STEM NUT	STAINLESS STEEL
9	1	SPOOL	CAST IRON
10	1	SEAT SEAL	BUNA-N
11	1	SEAT PLATE	FEDERALLOY
12	1	SEAT RING	FEDERALLOY
13	1	STEM O-RING	BUNA-N
14	1	SEAT RING O-RING	BUNA-N
15	A/R	BOLT & NUT	STAINLESS STEEL
16	A/R	WASHER	STAINLESS STEEL
17	1	DRAIN PLUG	STAINLESS STEEL

Exterior Valve Components

