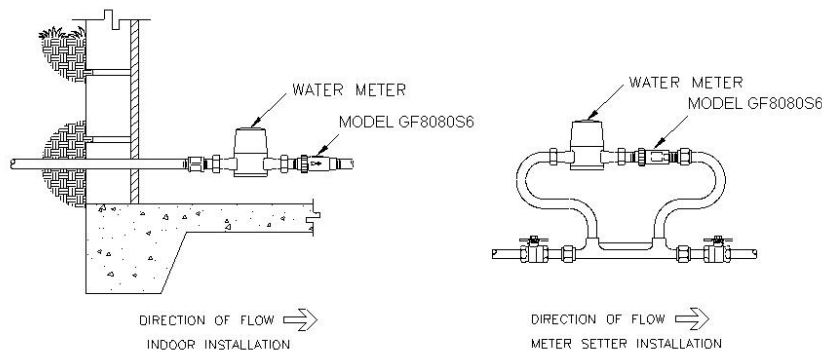


FAILURE TO FOLLOW THESE INSTRUCTION WILL VOID ANY WARRANTY

The Flomatic Model GF8080S6 is designed for installation on potable water lines where a cross-connection could result in pollution of potable water. If a health hazard could result from a cross-connection, use a Flomatic Model RPZE backflow preventer.



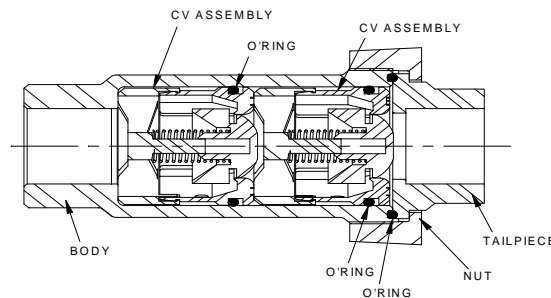
1. Before installation of valve, flush lines thoroughly to remove all foreign matter from the line. Flomatic recommends installing a Y-Strainer upstream of the valve to prevent fouling of the checks.
2. The model GF8080S6 is not position sensitive. It may be installed horizontally or vertically.
3. Install the valve in a location that will be easy to reach for future maintenance.
4. Use caution when soldering near valve. Remove check assemblies if excessive heat will be applied to valve.
5. The model GF8080S6 valve must be protected from freezing.
6. Do not install the model GF8080S6 where it will be subjected to pressure greater than 175psi or temperature greater the 180°F.



MAINTENANCE

Servicing the model GF8080S6 involves replacing the check assemblies.

1. Turn off inlet water supply.
2. Loosen nut.
3. Remove valve from line
4. Note the direction of check assemblies and o-ring locations. Push check assemblies out of valve.
5. Clean inside of valve body.
6. Replace parts in reverse order of removal. Make sure check assemblies are installed in correct direction.
7. Reinstall valve and turn on water.



1 Year Limited Warranty: Flomatic valves are guaranteed against defects of materials or workmanship when used for the services recommended. If in any recommended service, a defect develops due to material or workmanship, and the device is returned, freight prepaid, to Flomatic Corporation within 12 months from the date of purchase, it will be repaired or replaced free of charge. Flomatic Corporations' liability shall be limited to our agreement to repair or replace the valve only.