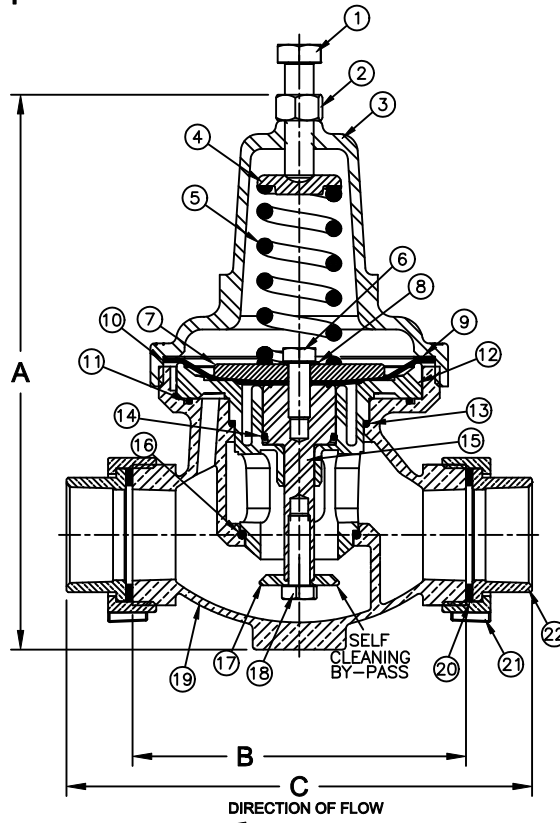


Sizes 1-1/2" & 2" / 40 mm & 50 mm
Direct Acting Pump Control



Materials



| Item # | Qty | Description | Material | Item # | Qty | Description | Material |
|--------|-----|-------------------|----------------------|--------|-----|----------------|----------------------|
| 1 | 1 | Adjusting Screw | Steel | 12 | 1 | Cartridge | Delrin 500P |
| 2 | 1 | Jam Nut | Steel | 13 | 1 | O'Ring | Buna-n |
| 3 | 1 | Cover | Bronze C83600 | 14 | 1 | O-Ring | Buna-n |
| 4 | 1 | Spring Button | DI 65-45-12 | 15 | 1 | Stem | Stainless Steel 304 |
| 5 | 1 | Spring | Steel | 16 | 1 | O-Ring | Buna-n |
| 6 | 1 | HHCS | Stainless Steel 18-8 | 17 | 1 | Disc Slotted | Stainless Steel 304 |
| 7 | 1 | Diaphragm Plate | DI 65-45-12 | 18 | 1 | HHCS | Stainless Steel 18-8 |
| 8 | 1 | Tooth Lock Washer | Stainless Steel 18-8 | 19 | 1 | Body | Bronze C89833 |
| 9 | 1 | Friction Ring | Brass C36000 | 20 | 2 | Union End Disc | Buna-n |
| 10 | 1 | Diaphragm | Nitrile/Nylon | 21 | 2 | Union End Nut | Bronze C89833 |
| 11 | 1 | O'Ring | Buna-n | 22 | 2 | Union End | Bronze C89833 |

Part Number C152003E/C152004E 15-75 psi
Part Number C152103E/C152104E 15-150 psi

Dimensions

Max Temp: 180°F (82°C)
Max Inlet Pressure 400psi (27bar)

| Size | | Part # | A | | B | | C | | Weight | |
|-------|----|----------|---------|-----|---------|-----|-------|-----|--------|-----|
| Inch | mm | | Inch | mm | Inch | mm | Inch | mm | lbs | kg |
| 1-1/2 | 40 | C152003E | 9-15/16 | 252 | 5-13/16 | 148 | 8-1/4 | 209 | 15.5 | 7.1 |
| 2 | 50 | C152004E | 9-15/16 | 252 | 5-13/16 | 148 | 8-1/8 | 206 | 16.8 | 7.6 |

Flomatic Corporation can accept no responsibility for possible errors in catalogues, brochures and other printed material. Flomatic Corporation reserves the right to alter its products without notices. This also applies to product already agreed. All trademarks in this material are property of the respective companies. All right reserved. ©2011 Flomatic Corporation. The drawings & information on this drawing sheet are the sole & exclusive property of Flomatic Corporation. Any reproduction, distribution, display or use of these drawings or information in whole or in part without written authorization of Flomatic Corporation is strictly prohibited.