

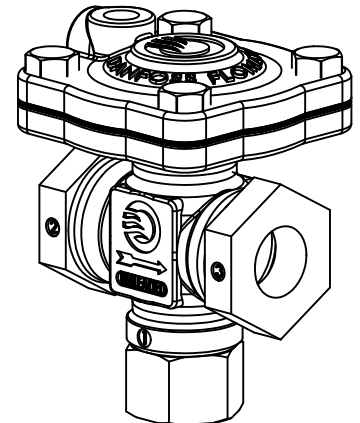
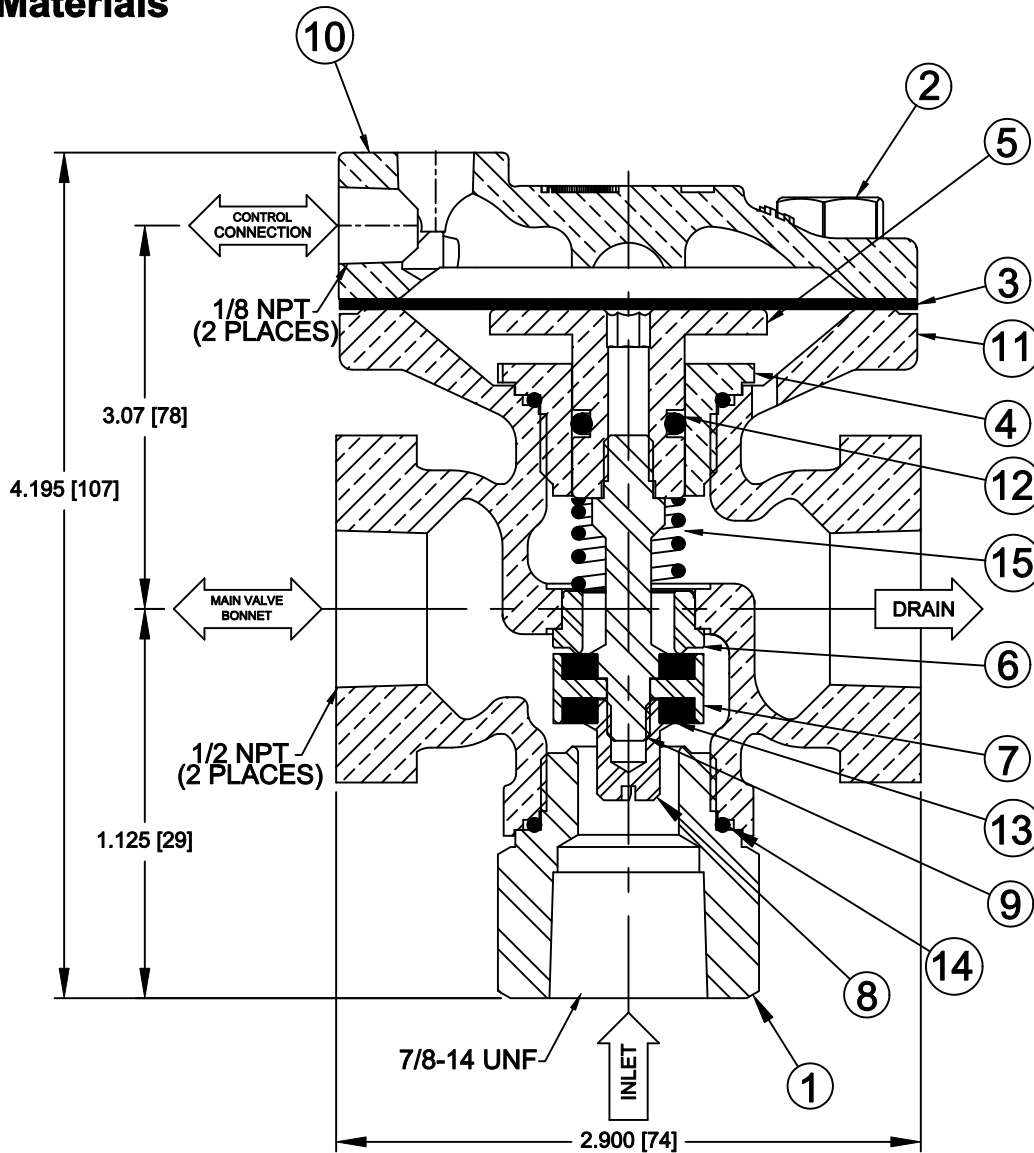
Control Valve

Accelerator Pilot **FLOMATIC**[®]

Sizes 1/2" / 15 mm

Flomatic Corporation

Materials



Max Temp 180°F (82°C)
Max Pressure 300psi (21bar)
Weight 2.1 (.95)

Item #	Qty	Description	Material	Item #	Qty	Description	Material
1	1	Body Seat	Stainless Steel 316	9	1	Pusher Post	Stainless Steel 316
2	4	Cover Bolt	Stainless Steel 18-8	10	1	Cover	Unleaded Bronze C89833
3	1	Diaphragm	Buna-n	11	1	Body	Unleaded Bronze C89833
4	1	Guide Bushing	Brass	12	1	O'Ring	Buna-n
5	1	Pressure Plate	Brass	13	1	Seat Disc	Buna-n
6	1	Seat Ring	Stainless Steel 304	14	1	O'Ring	Buna-n
7	1	Seat Shell	Stainless Steel 304	15	1	Spring	Stainless Steel 302
8	1	Nut	Stainless Steel 316				

Flomatic Corporation can accept no responsibility for possible errors in catalogues, brochures and other printed material. Flomatic Corporation reserves the right to alter its products without notices. This also applies to product already agreed. All trademarks in this material are property of the respective companies. All right reserved. ©2011 Flomatic Corporation. The drawings & information on this drawing sheet are the sole & exclusive property of Flomatic Corporation. Any reproduction, distribution, display or use of these drawings or information in whole or in part without written authorization of Flomatic Corporation is strictly prohibited.