

Control Valve

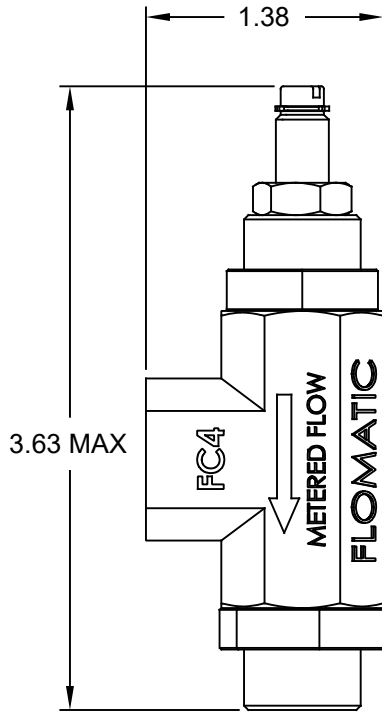
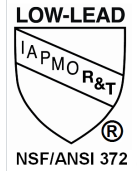
Accessory

Model FC4

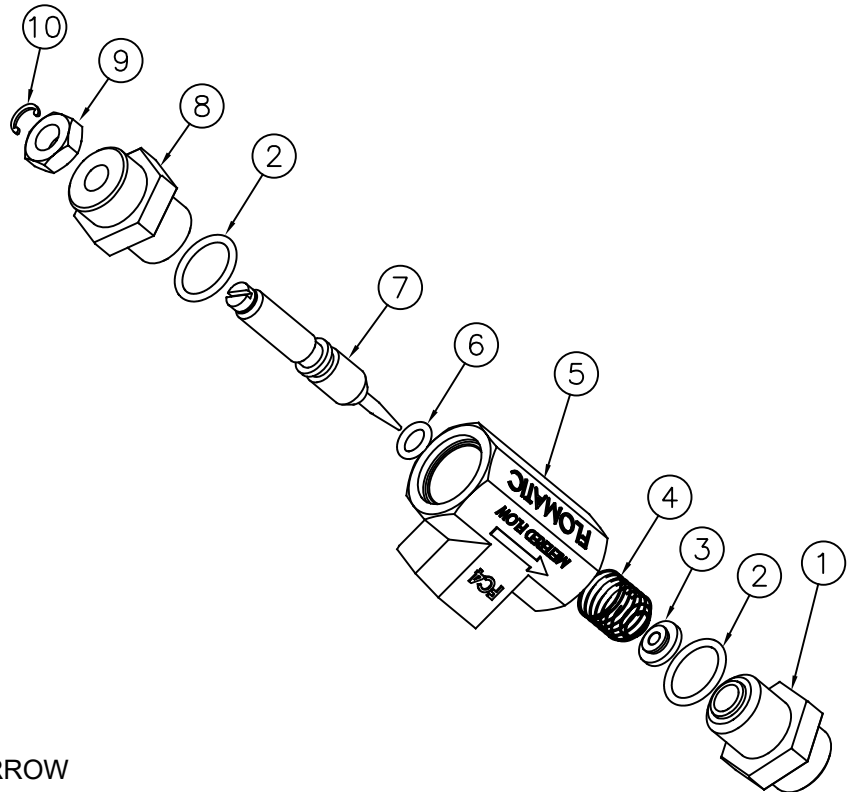


Sizes 3/8" / 10 mm
Flow Controller / Needle Valve

Materials



METERED FLOW IN DIRECTION OF ARROW



Adjustable restrictor that meters flow in the direction of the arrow on the body and allows free unmetered flow in the reverse direction.

Item #	Qty	Description	Material	ASTM
1	1	Seat	Stainless Steel	304
2	2	O'Ring	Buna-n	-----
3	1	Seat Disc	Stainless Steel	316
4	1	Spring	Stainless Steel	302
5	1	Body	Stainless Steel	316
6	1	O'Ring	Buna-n	-----
7	1	Needle	Stainless Steel	316
8	1	Needle Body	Stainless Steel	316
9	1	Jam Nut	Stainless Steel	18-8
10	1	Shaft Ring	Stainless Steel	18-8

Flomatic Corporation can accept no responsibility for possible errors in catalogues, brochures and other printed material. Flomatic Corporation reserves the right to alter its products without notices. This also applies to product already agreed. All trademarks in this material are property of the respective companies. All rights reserved. ©2023 Flomatic Corporation. The drawings & information on this drawing sheet are the sole & exclusive property of Flomatic Corporation. Any reproduction, distribution, display or use of these drawings or information in whole or in part without written authorization of Flomatic Corporation is strictly prohibited. www.flomatic.com

