



MATERIALS:

Body	316 Stainless Steel
Ball	316 Stainless Steel
Seats	PTFE teflon
Stems	316 Stainless Steel
Stem packing	PTFE teflon
Handle	316 Stainless Steel
Handle Nut	316 Stainless Steel

FEATURES:

Sizes: ¼" ⅜" 1" 1½" 2"

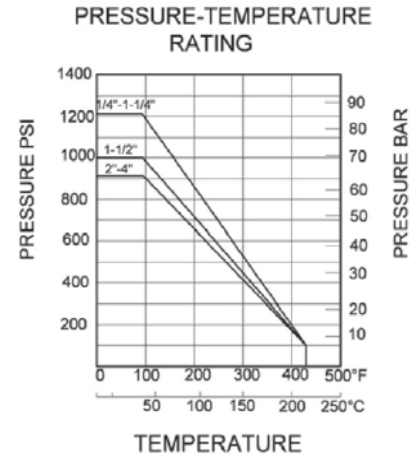
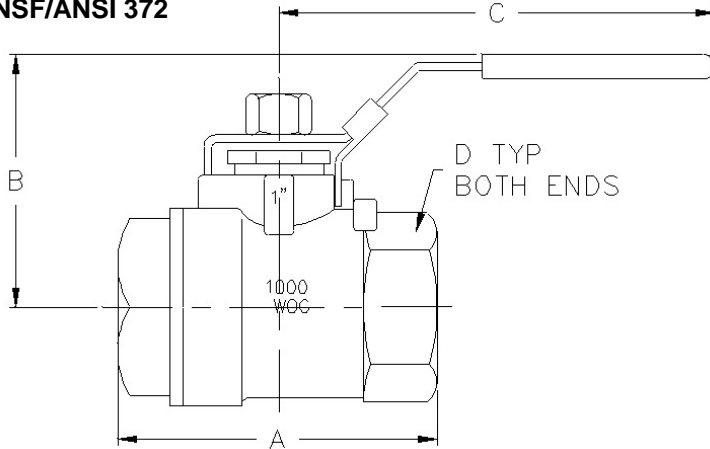
Pressure rating 1000 psi WOG(4137 kPa)
 Temperature rating 400°F (204°C)
 Max Pressure 1000 psi (6895 kPa)
 End connection (FNPT) ANSI/ASME B1.20.1

APPLICATION:

The Flomatic 316SS ¼ Turn Ball Valves are recommended for industrial, commercial & residential applications. They are ideal for throttling & balancing installations of low pressure steam, water, air & non-corrosive oil or gas. Excellent choice for high pressure potable water systems

STANDARDS COMPLIANCE:

Complies with California Low Lead Plumbing Laws
NSF/ANSI 372



Size		Part #	A		B		C		D NPT	Weight	
Inch	mm		Inch	mm	Inch	mm	Inch	mm		lbs	kg
¼	8	SSBV1000-02	2.13	54	1.89	48	3.18	81	¼	.50	.23
⅜	10	SSBV1000-03	2.13	54	1.89	48	3.38	86	⅜	.50	.23
½	15	SSBV1000-05	2.5	64	2.12	54	3.78	96	½	.75	.34
¾	20	SSBV1000-07	2.88	73	2.24	57	4.25	108	¾	1.15	.52
1	25	SSBV1000-10	3.43	87	2.59	66	5.27	134	1	1.95	.88
1¼	32	SSBV1000-12	3.98	101	2.91	74	5.78	147	1¼	2.80	1.27
1½	40	SSBV1000-15	4.23	107	3.30	84	6.29	160	1½	4.25	1.93
2	50	SSBV1000-20	4.84	123	3.62	92	6.49	165	2	6.40	2.90
2½	65	SSBV1000-25	6.29	160	5.11	130	9.84	250	2½	14.42	6.54
3	75	SSBV1000-30	7.28	185	5.51	140	9.84	250	3	23.06	10.46

WARRANTY: Flomatic valves are guaranteed against defects of materials or workmanship when used for the services recommended. If in any recommended service, a defect develops due to material or workmanship, and the device is returned, freight prepaid, to Flomatic Corporation within 12 months from the date of purchase, it will be repaired or replaced free of charge. Flomatic Corporations' liability shall be limited to our agreement to repair or replace the valve only.