

AWWA C509 (NRS) Gate Valve Specification Submittal Sheet



Flomatic Corporation

Model 109NRS
 Sizes: 2-1/2" - 12"
 ANSI 125# Flange



MATERIALS:

Valve Body & Handwheel	Ductile Iron ASTM A536 Gr 65-45-12
Covers	
Coating	AWWA compliant C-550 & FDA Compliant (Inside & Out)
Wedge	Ductile Iron ASTM A536 Gr 65-45-12 With EPDM coating
Elastomers	EPDM FDA approved
Fasteners	304 Stainless Steel
Stem	Bronze ASTM B584 CDA 862

FEATURES:

Sizes: □2 1/2" □3" □4" □6" □8"
 □10" □12"

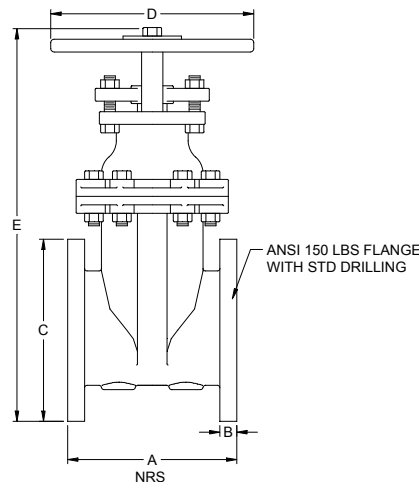
Max. working water pressure	250 PSI (1723 kPa)
Max. working water temperature	140°F (60°C)
Hydrostatic test pressure	400 PSI (2758 kPa)
End connection	ANSI/ASME B16.1
Opens	Left turn

APPLICATION:

Designed for installation on potable water lines, irrigation systems, waterworks connections and fire systems.

STANDARDS COMPLIANCE:

- AWWA Compliant C-509



Size		Part #	A		B		C		D		E		WEIGHT	
Inch	mm		Inch	mm	Inch	mm	Inch	mm	Inch	mm	Inch	mm	lbs	kg
2-1/2	65	8461	7-1/2	191	11/16	18	7	178	7-1/4	184	14-7/8	378	38	17.2
3	80	8462	8	203	3/4	19	7-1/2	191	10	254	16-1/8	410	56	25.4
4	100	8463	9	229	15/16	24	9	229	10	254	19-1/4	489	78	35.4
6	150	8464	10-1/2	267	1	25	11	279	12	305	24-1/2	622	138	62.75
8	200	8465	11-1/2	292	1-1/8	29	13-1/2	343	14	356	29-1/4	743	214	97.25
10	250	8466	13	330	1-3/16	30	16	406	18	457	34-1/2	876	360	163.5
12	300	8467	14	356	1-1/4	6	19	483	18	457	39-1/2	1003	531	241

WARRANTY: Flomatic valves are guaranteed against defects of materials or workmanship when used for the services recommended. If in any recommended service, a defect develops due to material or workmanship, and the device is returned, freight prepaid, to Flomatic Corporation within 12 months from the date of purchase, it will be repaired or replaced free of charge. Flomatic Corporations' liability shall be limited to our agreement to repair or replace the valve only.

Flomatic Corporation, 15 Pruyn's Island, Glens Falls, New York 12801
 Phone: 518-761-9797 Fax: 518-761-9798 www.flomatic.com



November 29, 2004 Rev. 13 (1/20)
 Specification Sheet NRS