

Air Release Valve

Size 2" Thru 4" / 50mm thru 100mm

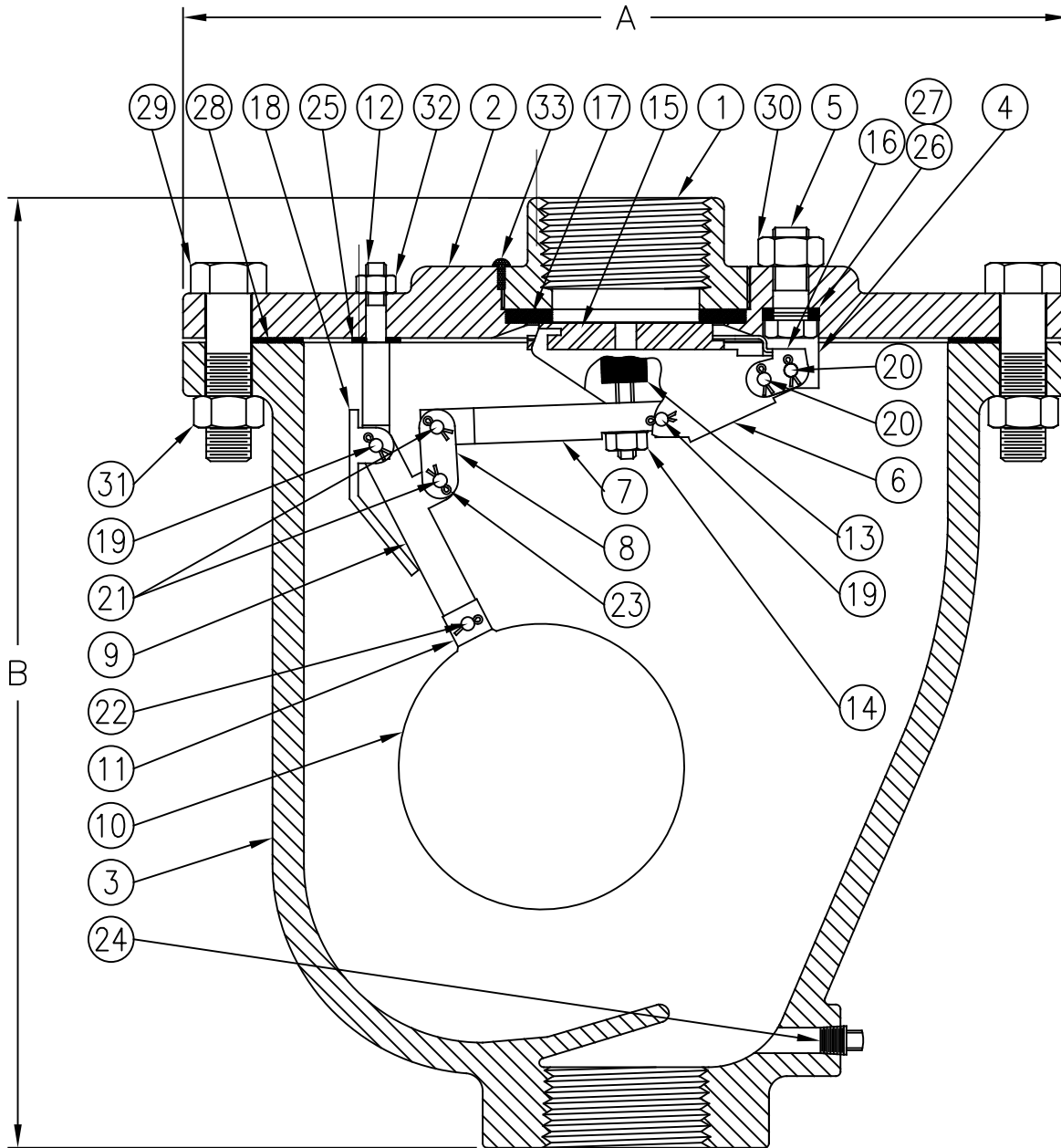
Comboair® **FLOMATIC®**

Flomatic Corporation



Meets the Requirements of
NSF/ANSI 61 & 372

Materials



Flomatic Corporation can accept no responsibility for possible errors in catalogues, brochures and other printed material. Flomatic Corporation reserves the right to alter its products without notices. This also applies to product already agreed. All trademarks in this material are property of the respective companies. All rights reserved. ©2023 Flomatic Corporation. The drawings & information on this drawing sheet are the sole & exclusive property of Flomatic Corporation. Any reproduction, distribution, display or use of these drawings or information in whole or in part without written authorization of Flomatic Corporation is strictly prohibited. www.flomatic.com



Meets the Requirements of
ANSI/AWS 61 & 92

Materials

Optional Orifice Ø	Max. Working Pressure
*1/4"	150 PSIG
3/16"	250 PSIG
1/8"	300 PSIG

*Standard operating pressure is:
minimum 20 psig & maximum 150 psig.
Consult factory for pressure outside this range.

Item #	Description	Material	ASTM	Item #	Description	Material	ASTM
1	Top	Ductile Iron	65-45-12	18	Pressure Limit Stop	Stainless Steel	A240
2	Flange	Ductile Iron	65-45-12	19	Bearing Pin	Stainless Steel	A582
3	Body	Ductile Iron	65-45-12	20	Bearing Pin	Stainless Steel	A582
4	A&V Fulcrum	Stainless Steel	A240	21	Bearing Pin	Stainless Steel	A582
5	Bolt	Stainless Steel	A276	22	Bearing Pin	Stainless Steel	A582
6	Pressure Fulcrum	Stainless Steel	A240	23	Cotter Pin	Stainless Steel	A313
7	Valve Lever	Stainless Steel	A240	24	Drain Plug	Steel	-----
8	Link	Stainless Steel	A240	25	Fulcrum Washer	Fibre	-----
9	Ball Lever	Stainless Steel	A240	26	Fulcrum Washer	Fibre	-----
10	Float	Stainless Steel	A240	27	Fulcrum Washer	Fibre	-----
11	Float Rod	Stainless Steel	A582	28	Gasket	Armstrong	N-8090
12	Ball Fulcrum	Stainless Steel	A582	29	Bolt	Steel	J429
13	Plunger	Buna-n/Stainless Steel	A276	30	Nut	Steel	A563
14	Nut	Stainless Steel	A276	31	Nut	Steel	A563
15	Pressure Seat	Stainless Steel	A276	32	Nut	Steel	A563
16	Seat Cage	Stainless Steel	A240	33	Interference Pin	Stainless Steel	18-8
17	Seat	Buna-n	-----				

Dimensions (FNPT)

Max. Temp 150°F (65°C)

ANSI B1.20.1

Size		Part #	A		B		INLET SIZE		OUTLET SIZE		Weight	
inch	mm		inch	mm	inch	mm	inch	mm	inch	mm	lbs	kg
2	50	6541	12-1/2	318	13-1/2	343	2	50	2	50	68	31
3	75	6542	14-3/4	375	18	457	3	75	3	75	114	52
4	100	6546	14-3/4	375	18	457	3	75	3	75	117	53

Meets AWWA C512

Flomatic Corporation can accept no responsibility for possible errors in catalogues, brochures and other printed material. Flomatic Corporation reserves the right to alter its products without notices. This also applies to product already agreed. All trademarks in this material are property of the respective companies. All rights reserved. ©2023 Flomatic Corporation. The drawings & information on this drawing sheet are the sole & exclusive property of Flomatic Corporation. Any reproduction, distribution, display or use of these drawings or information in whole or in part without written authorization of Flomatic Corporation is strictly prohibited. www.flomatic.com