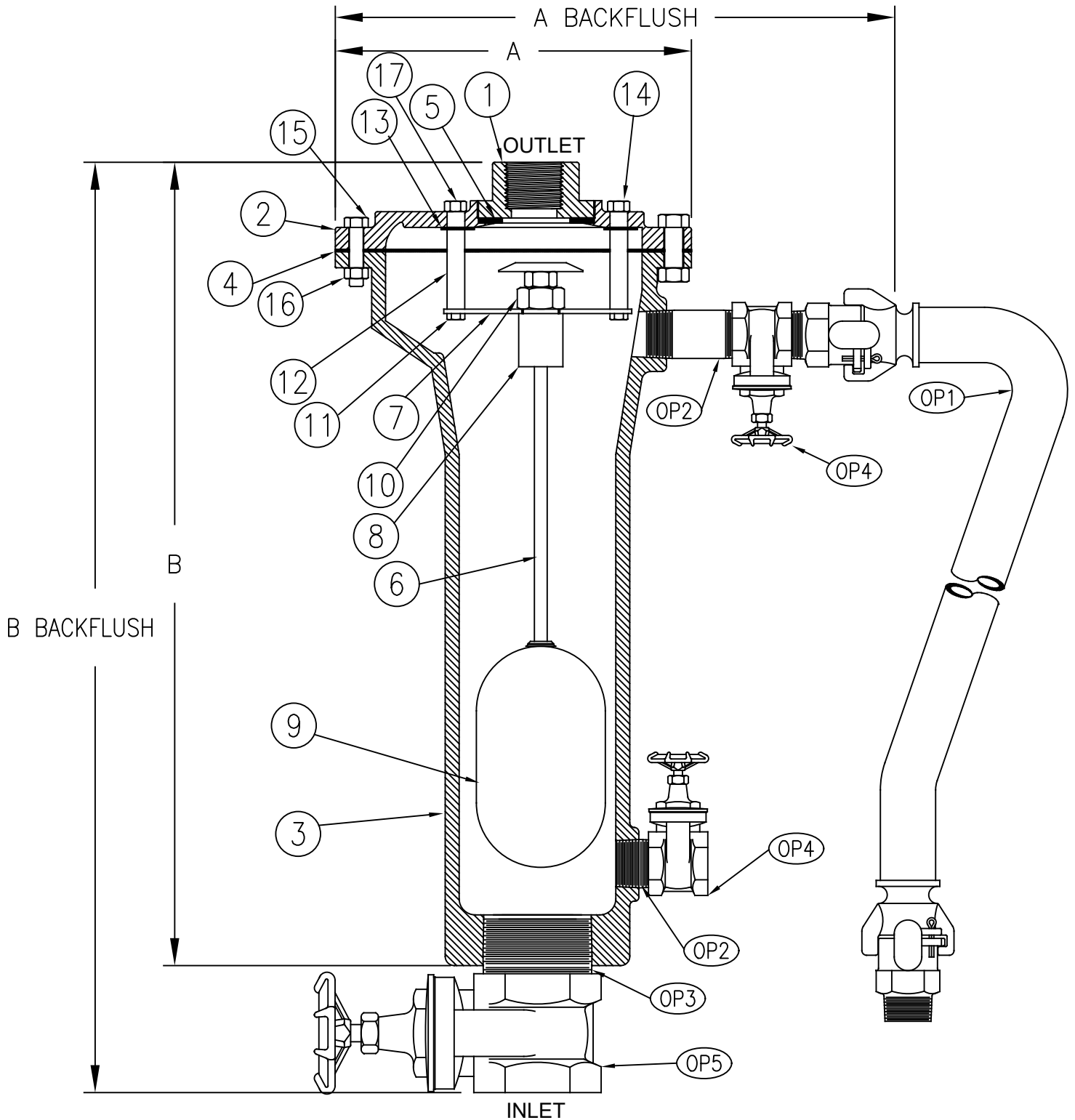


# Air Release Valve

Size 2" thru 4" / 50mm thru 100mm

## Materials



Drawing Shown with Optional Backflush

Flomatic Corporation can accept no responsibility for possible errors in catalogues, brochures and other printed material. Flomatic Corporation reserves the right to alter its products without notices. This also applies to product already agreed. All trademarks in this material are property of the respective companies. All rights reserved. ©2024 Flomatic Corporation. The drawings & information on this drawing sheet are the sole & exclusive property of Flomatic Corporation. Any reproduction, distribution, display or use of these drawings or information in whole or in part without written authorization of Flomatic Corporation is strictly prohibited. [www.flomatic.com](http://www.flomatic.com)

## Materials

\*Standard operating pressure is:  
minimum 20 psig & maximum 150 psig.  
Consult factory for pressure outside this range.

Optional Backflush			
Item #	Description	Material	ASTM
OP1	Backflush Assembly	See SBF2-3	-----
OP2	Nipple	Steel	A53
OP3	Nipple	Steel	A53
OP4	Shut-Off Valve	Brass	N/A
OP5	Shut-Off Valve	Brass	N/A

Item #	Description	Material	ASTM	Item #	Description	Material	ASTM
1	*Top	Ductile Iron	65-45-12	10	Jam Nut	Stainless Steel	A276
2	*Flange	Ductile Iron	65-45-12	11	Screw	Stainless Steel	A276
3	*Body	Ductile Iron	65-45-12	12	Stand Rod	Stainless Steel	A582
4	Flange Gasket	Armstrong	N-8092	13	Stand Rod Gasket	Fibre	-----
5	Seat	Buna-n	D2000	14	Stand Rod Nut	Steel	D2000
6	Float Rod	Stainless Steel	A582	15	Bolt	Steel	A563
7	Rod Guide Stand	Stainless Steel	A240	16	Nut	Steel	J429
8	Float Rod Guide	Nylantron	-----	17	Bolt	Steel	A563
9	Float	Stainless Steel	A240	*3" & 4" Material Cast Iron A126 Drawing Shown with Optional Backflush			

## Dimensions (FNPT)

Max. Temp 150°F (65°C)  
Max. Inlet Pressure 150 psi (10 bar)

### ANSI B1.20.1

Size		Part #	BF Part #	A		A with Backflush		B		B with Backflush		Inlet Size		Outlet Size		Weight		Weight with Backflush	
inch	mm			inch	mm	inch	mm	inch	mm	inch	mm	inch	mm	inch	mm	inch	mm	lbs	kg
2	50	6620	BF2	9.69	246	11.75	299	21.50	546	25.25	641	2	50	1	25	49	23	60	28
2	50	6621	BF2	10.25	260	13.50	343	25.50	648	29.25	743	2	50	2	50	90	41	100	46
3	75	6622	BF3	10	254	13.50	343	21.75	552	27.25	692	3	75	3	75	100	46	115	53
4	100	6623	BF4	11.50	292	16	406	23.25	591	29	737	4	100	4	100	120	55	149	68

Meets AWWA C-512

Flomatic Corporation can accept no responsibility for possible errors in catalogues, brochures and other printed material. Flomatic Corporation reserves the right to alter its products without notices. This also applies to product already agreed. All trademarks in this material are property of the respective companies. All rights reserved. ©2024 Flomatic Corporation. The drawings & information on this drawing sheet are the sole & exclusive property of Flomatic Corporation. Any reproduction, distribution, display or use of these drawings or information in whole or in part without written authorization of Flomatic Corporation is strictly prohibited. www.flomatic.com