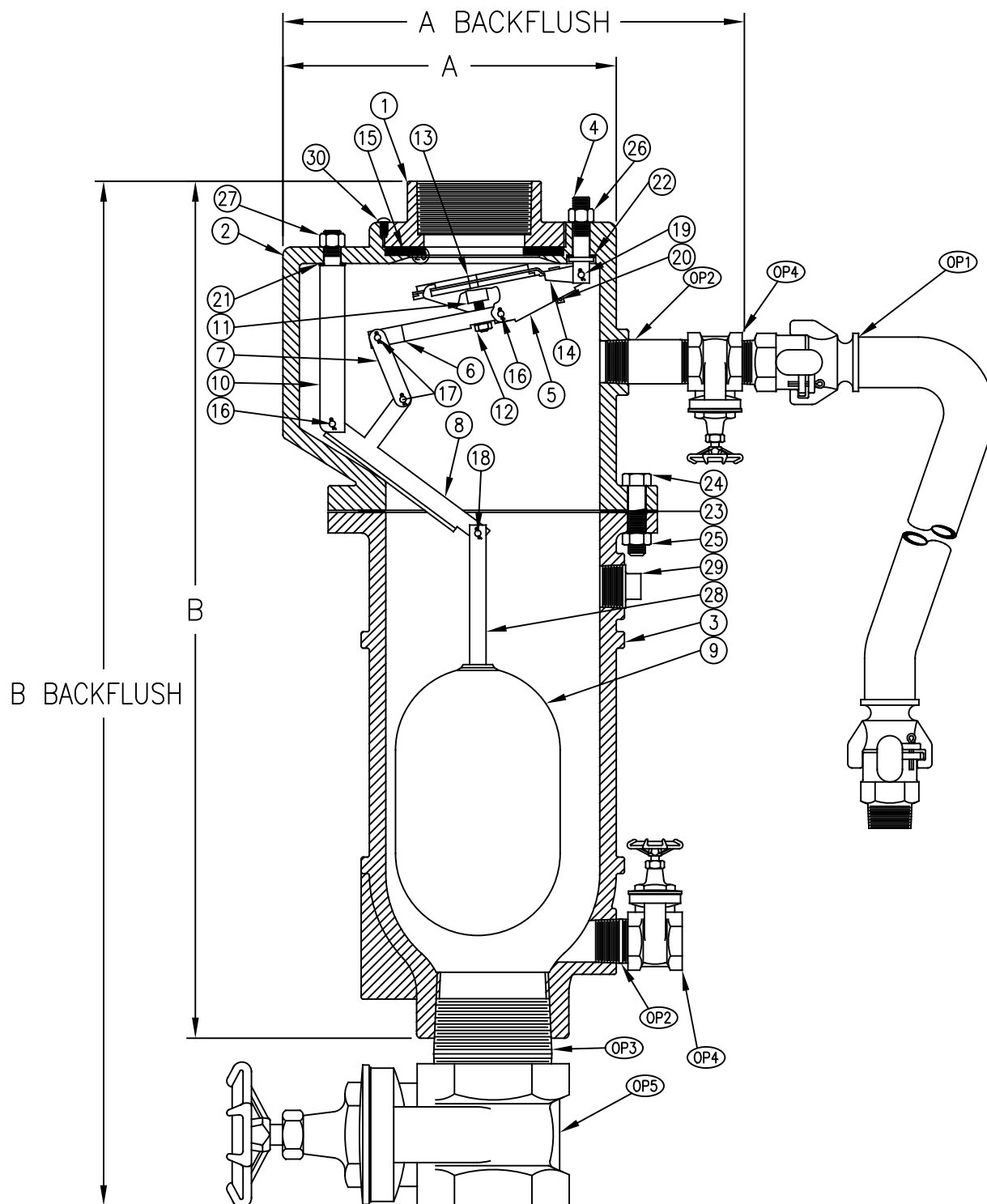


Materials



Drawing Shown with Optional Backflush

Flomatic Corporation can accept no responsibility for possible errors in catalogues, brochures and other printed material. Flomatic Corporation reserves the right to alter its products without notices. This also applies to product already agreed. All trademarks in this material are property of the respective companies. All rights reserved. ©2023 Flomatic Corporation. The drawings & information on this drawing sheet are the sole & exclusive property of Flomatic Corporation. Any reproduction, distribution, display or use of these drawings or information in whole or in part without written authorization of Flomatic Corporation is strictly prohibited. www.flomatic.com

Air Release Valve

Size 2" & 3" / 50mm & 75mm

Sewair-Combo®

FLOMATIC
Flomatic Corporation

Materials

Optional Orifice Ø p/n 6650	Max. Working Pressure
* 3/16"	150 PSIG
3/32"	300 PSIG

Optional Orifice Ø p/n 6651 & 6652	Max. Working Pressure
* 1/4"	150 PSIG
1/8"	300 PSIG

*Standard operating pressure is:
minimum 20 psig & maximum 150 psig.
Consult factory for pressure outside this range.

Optional Backflush			
Item #	Description	Material	ASTM
OP1	Backflush Assembly	See SBF2-3	-----
OP2	Nipple	Steel	A53
OP3	Nipple	Steel	A53
OP4	Shut-Off Valve	Brass	N/A
OP5	Shut-Off Valve	Brass	N/A

Item #	Description	Material	ASTM	Item #	Description	Material	ASTM
1	*Top	Ductile Iron	65-45-12	16	Bearing Pin	Stainless Steel	A582
2	*Flange	Ductile Iron	65-45-12	17	Bearing Pin	Stainless Steel	A582
3	*Body	Ductile Iron	65-45-12	18	Bearing Pin	Stainless Steel	A582
4	A&V Fulcrum	Stainless Steel	A240	19	Bearing Pin	Stainless Steel	A582
5	Pressure Fulcrum	Stainless Steel	A240	20	Bearing Pin Clip	Stainless Steel	A313
6	Valve Lever	Stainless Steel	A240	21	Fulcrum Washer	Fibre	D710
7	Link	Stainless Steel	A240	22	Fulcrum Washer	Fibre	D710
8	Ball Lever	Stainless Steel	A240	23	Fulcrum Gasket	Armstrong	N-8092
9	Float	Stainless Steel	A240	24	Flange Bolt	Steel	J429
10	Ball Fulcrum	Stainless Steel	A582	25	Flange Nut	Steel	A563
11	Plunger	Buna-n/Stainless Steel	A276	26	A&V Fulcrum Nut	Steel	A563
12	Plunger Nut	Stainless Steel	A276	27	Ball Fulcrum Nut	Steel	A563
13	Pressure Seat	Stainless Steel	A276	28	Ball Float Rod	Stainless Steel	A240/A582
14	Seat Cage	Stainless Steel	A240	29	Flush Plug	Cast Iron	A126
15	A&V Seat	Buna-n	-----	30	Interference Pin	Stainless Steel	18-8

*3" Material Cast Iron A126

Drawing Shown with Optional Backflush

Max. Temp 150°F (65C)

Dimensions (FNPT)

ANSI B1.20.1

Size		Part #	BF Part #	A		A with Backflush		B		B with Backflush		Inlet Size		Outlet Size		Weight		Weight with Backflush	
inch	mm			inch	mm	inch	mm	inch	mm	inch	mm	inch	mm	inch	mm	lbs	kg	lbs	kg
2	50	6650	BF2	9-3/4	248	11-3/4	299	21-1/2	546	25-1/4	641	2	50	1	25	50	23	62	28
2	50	6651	BF2	10-1/4	260	13-1/2	343	25-1/2	648	29-1/4	743	2	50	2	50	93	42	105	48
3	75	6652	BF3	10	254	13-1/2	343	21-3/4	553	27-1/4	692	3	75	3	75	127	58	144	66

Flomatic Corporation can accept no responsibility for possible errors in catalogues, brochures and other printed material. Flomatic Corporation reserves the right to alter its products without notices. This also applies to product already agreed. All trademarks in this material are property of the respective companies. All rights reserved. ©2023 Flomatic Corporation. The drawings & information on this drawing sheet are the sole & exclusive property of Flomatic Corporation. Any reproduction, distribution, display or use of these drawings or information in whole or in part without written authorization of Flomatic Corporation is strictly prohibited. www.flomatic.com

FLOMATIC VALVES

Page 2 of 2
December 30, 1997
Dwg No: S6650-2 Rev G (11/23)

FLOMATIC CORPORATION
GLENS FALLS, N.Y. 12801
PHONE (518) 761-9797
FAX (518) 761-9798