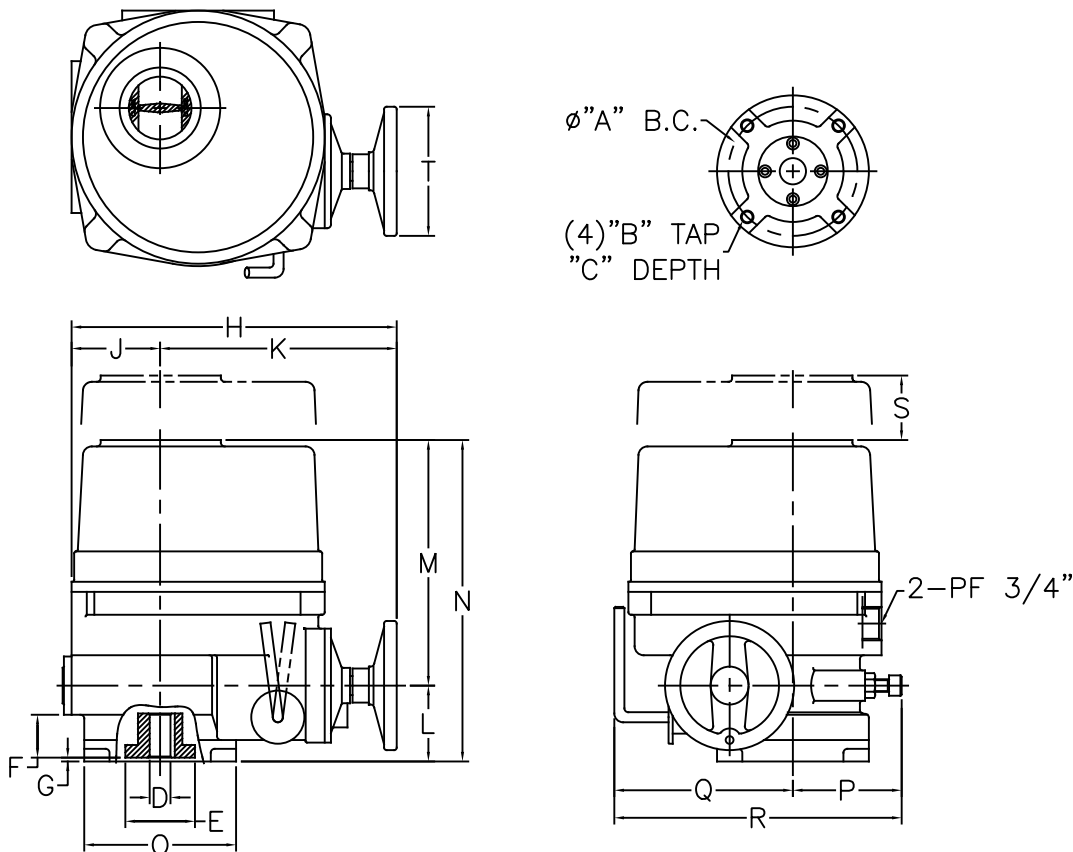


Dimensions



NOTE: When installing an actuator, proper clearance around the actuator is required to ensure that the cover can be removed to allow for maintenance. Refer to dimension "S".

Model	FCEL-6	FCEL-9	FCEL-15	FCEL-19	FCEL-28	FCEL-38	FCEL-50	FCEL-60	FCEL-80	FCEL-100
ISO 5211 FLANGE	F-07		F-07/F-10			F-10/F-12			F-12/F-14	
A	2.76		2.76 / 4.02			4.02 / 4.92			4.92 / 5.51	
B	M8		M8 / M10			M10 / M12			M12 / M16	
C	.47		.59			.71			.87	
D	.87		.87			1.26			1.65	
E	2.17		2.24			2.95			3.35	
F	1.69		1.69			2.05			2.32	
G	.08		.08			.08			.08	
H	9.09		10.28			11.22			12.8	
J	2.21		3.03			3.27			3.9	
K	6.89		7.25			7.95			8.9	
L	2.36		2.36			2.76			3.07	
M	8.39		8.39			9.84			11.14	
N	10.75		10.75			12.6			14.21	
O	4.02		4.73			5.71			6.89	
P	2.68		3.35			3.9			4.57	
Q	4.45		5.47			6.26			7.52	
R	7.13		8.82			10.16			12.09	
S	4.25		4.25			5.12			7.01	
T	4.02		4.92			4.92			6.69	

Flomatic Corporation can accept no responsibility for possible errors in catalogues, brochures and other printed material. Flomatic Corporation reserves the right to alter its products without notices. This also applies to product already agreed. All trademarks in this material are property of the respective companies. All rights reserved. ©20228 Flomatic Corporation. The drawings & information on this drawing sheet are the sole & exclusive property of Flomatic Corporation. Any reproduction, distribution, display or use of these drawings or information in whole or in part without written authorization of Flomatic Corporation is strictly prohibited. www.flomatic.com

Specifications

STANDARD SPECIFICATIONS	
ENCLOSURE	WATERTIGHT IP67, NEMA 4 & 6 FROM -20° TO +158° FAHRENHEIT 300°FAHRENHEIT FOR 1 HOUR
POWER SUPPLY	120 VAC 1-PHASE
CONTROL POWER	110/220 VAC 1-PHASE, 60/50Hz
DUTY CYCLE	SEE PERFORMANCE CHART
TORQUE SWITCHES	(2) OPEN/CLOSE (RCEL-15 THRU RCEL-250)
LIMIT SWITCHES	(2) OPEN/CLOSE, 250 VAC 16A RATING
STALL PROTECTION	INTERNAL THERMAL PROTECTION OPEN 300°F/CLOSE 207°F
TRAVEL ANGLE	90° ±5°
INDICATOR	CONTINUOUS POSITION INDICATOR
MANUAL OVERRIDE	HAND/AUTO DECLUTCHING MECHANISM
SELF LOCKING	PROVIDED BY MEANS OF WORM GEARING
MECHANICAL STOPS	EXTERNAL ADJUSTABLE SCREWS
SPACE HEATER	20 WATTS (24/120/220 VAC AND 24 VDC) ANTI-CONDENSATION
CONDUIT ENTRIES	TWO 3/4" NPT
LUBRICATION	GREASE MOLY (EP) TYPE
MATERIALS	STEEL, ALUMINUM ALLOY, ALUMINUM BRONZE
SURFACE TREATMENT	ANODIZING
EXTERNAL COATING	DRY POWER, EPOXY-POLYESTER

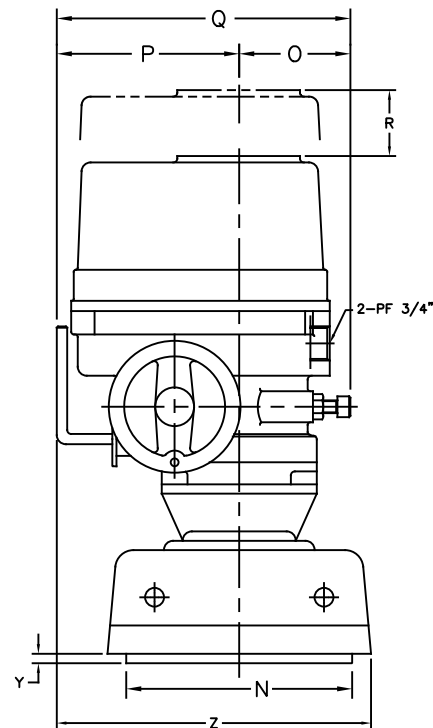
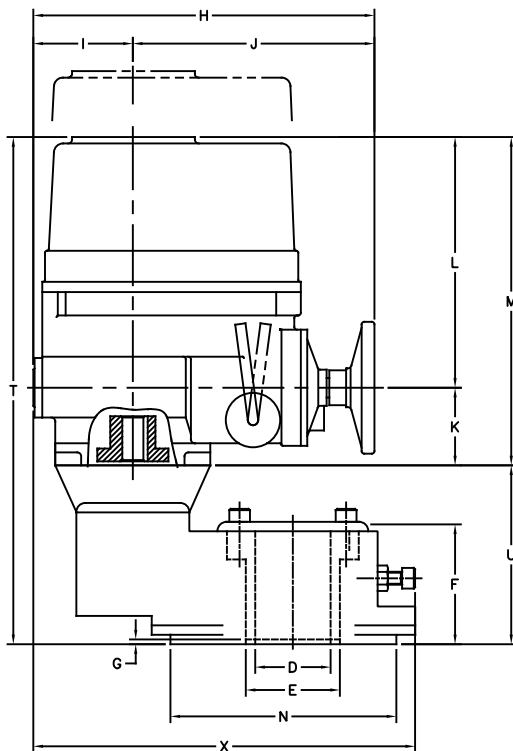
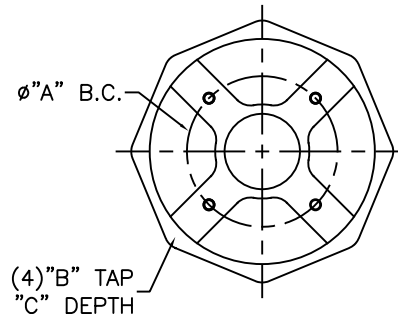
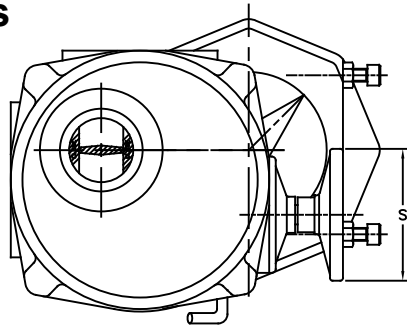
OPTIONAL ITEMS	
POWER SUPPLY	220VAC 1-PHASE 380/440VAC 3-PHASE
EXP	EXPLOSION & WATER PROOF ENCLOSURE CLASS C&D/CLASS IIE,F,&G EXD IIB T4 IP67
DCM	24 VDC MOTOR (RCEL-6 THRU RCEL-28)
ACM	24 VAC MOTOR (RCEL-6 THRU RCEL-28)
ALS	AUXILIARY LIMIT SWITCHES 2 SPDT SWITCHES (6 AUX SWITCHES MAX)
EXT	EXTENDED TRAVEL ANGLE 120° TO 360° (RCEL-6 THRU RCEL-100)
LCU	LOCAL CONTROL UNIT (NEMA-4) LOCAL/REMOTE SELECTOR SWITCH OPEN/STOP/CLOSE SELECTOR SWITCH
LCU W/ KEY	LOCAL CONTROL UNIT (NEMA-4) WITH KEY LOCK
PIU	1K Ohm FEEDBACK POTENTIOMETER
CPT	CURRENT POSITION FEEDBACK TRANSMITTER 4-20mA DC OUTPUT
DCT	VDC POSITION FEEDBACK TRANSMITTER 1-5vdc, 0-5vdc AND 0-10vdc
PCU	PROPORTIONAL CONTROL UNIT 4-20mA, 1-5VDC OR 0-10VDC INPUT
IMS	INTEGRAL MOTOR STARTER INCLUDES REVERSING CONTACTORS AND STEP DOWN TRANSFORMER
CLC	REPEAT CYCLE TIMER FOR CYCLE LENGTH CONTROL
ATS	AUXILIARY TORQUE SWITCHES 2 SPDT SWITCHES (RCEL-15 THRU RCEL-250)

PERFORMANCE

TYPE	MAX OUTPUT TORQUE IN LBS	OPERATING TIME 60/50 hz 90°	DUTY CYCLE 30 MIN THERMALLY PROTECTED	RATED CURRENT (AMPS)				NUMBER OF HANDLE TURN	WEIGHT LBS
				1 PHASE		3 PHASE			
				120vac	220vac	380vac	440vac		
FCEL-6	521	14/17	100%	.66A	.29A	.12A	.14A	8.5	24
FCEL-9	781	14/17	100%	1.07A	.49A	.14A	.17A	8.5	24
FCEL-15	1302	17/20	80%	1.45A	.71A	.30A	.30A	10.0	27
FCEL-19	1649	17/20	80%	1.60A	.71A	.30A	.30A	10.0	29
FCEL-28	2430	20/24	100%	1.60A	.90A	.33A	.34A	12.5	38
FCEL-38	3298	20/24	100%	1.95A	1.26A	.36A	.34A	12.5	40
FCEL-50	4340	20/24	80%	3.10A	1.50A	.56A	.57A	12.5	42
FCEL-60	5208	24/29	80%	3.10A	1.50A	.56A	.57A	14.5	49
FCEL-80	6944	24/29	70%	4.10A	2.15A	.84A	.78A	14.5	51
FCEL-100	8680	24/29	70%	4.10A	2.15A	.84A	.78A	14.5	55

Flomatic Corporation can accept no responsibility for possible errors in catalogues, brochures and other printed material. Flomatic Corporation reserves the right to alter its products without notices. This also applies to product already agreed. All trademarks in this material are property of the respective companies. All rights reserved. ©2022 Flomatic Corporation. The drawings & information on this drawing sheet are the sole & exclusive property of Flomatic Corporation. Any reproduction, distribution, display or use of these drawings or information in whole or in part without written authorization of Flomatic Corporation is strictly prohibited. www.flomatic.com

Dimensions



Model	FCEL-150	FCEL-200	FCEL-250	FCEL-300		FCEL-150	FCEL-200	FCEL-250	FCEL-300
ISO 5211 FLANGE	F-16					F-16			
A	6.5				M	14.21			
B	M20				N	10.47			
C	1.18				O	4.57			
D	2.95				P	7.52			
E	3.94				Q	12.09			
F	4.96				R	7.01			
G	.28				S	6.69			
H	12.8				T	21.89			
I	3.90				U	7.68			
J	8.90				X	15.28			
K	3.07				Y	0.63			
L	11.14				Z	12.52			

Flomatic Corporation can accept no responsibility for possible errors in catalogues, brochures and other printed material. Flomatic Corporation reserves the right to alter its products without notices. This also applies to product already agreed. All trademarks in this material are property of the respective companies. All rights reserved. ©2022 Flomatic Corporation. The drawings & information on this drawing sheet are the sole & exclusive property of Flomatic Corporation. Any reproduction, distribution, display or use of these drawings or information in whole or in part without written authorization of Flomatic Corporation is strictly prohibited. www.flomatic.com

Specifications

STANDARD SPECIFICATIONS	
ENCLOSURE	WATERTIGHT IP67, NEMA 4 & 6
AMBIENT TEMP	FROM -20° TO +158° FAHRENHEIT 300°FAHRENHEIT FOR 1 HOUR
POWER SUPPLY	120 VAC 1-PHASE
CONTROL POWER	110/220 VAC 1-PHASE, 60/50Hz
DUTY CYCLE	SEE PERFORMANCE CHART
TORQUE SWITCHES	(2) OPEN/CLOSE (RCEL-15 THE RCEL-250)
LIMIT SWITCHES	(2) OPEN/CLOSE, 250 VAC 16A RATING
STALL PROTECTION	INTERNAL THERMAL PROTECTION OPEN 300°F/CLOSE 207°F
TRAVEL ANGLE	90° ±5°
INDICATOR	CONTINUOUS POSITION INDICATOR
MANUAL OVERRIDE	HAND/AUTO DECLUTCHING MECHANISM
SELF LOCKING	PROVIDED BY MEANS OF WORM GEARING
MECHANICAL STOPS	EXTERNAL ADJUSTABLE SCREWS
SPACE HEATER	20 WATTS (24/120/220 VAC AND 24 VDC) ANTI-CONDENSATION
CONDUIT ENTRIES	TWO 3/4" NPT
LUBRICATION	GREASE MOLY (EP) TYPE
MATERIALS	STEEL, ALUMINUM ALLOY, ALUMINUM BRONZE
SURFACE TREATMENT	ANODIZING
EXTERNAL COATING	DRY POWER, EPOXY-POLYESTER

OPTIONAL ITEMS	
POWER SUPPLY	220VAC 1-PHASE 380/440VAC 3-PHASE
EXP	EXPLOSION & WATER PROOF ENCLOSURE CLASS C&D/CLASS IIE,F,&G EXD IIB T4 IP67
DCM	24 VDC MOTOR (RCEL-6 THRU RCEL-28)
ACM	24 VAC MOTOR (RCEL-6 THRU RCEL-28)
ALS	AUXILIARY LIMIT SWITCHES 2 SPDT SWITCHES (6 AUX SWITCHES MAX)
EXT	EXTENDED TRAVEL ANGLE 120° TO 360° (RCEL-6 THRU RCEL-100)
LCU	LOCAL CONTROL UNIT (NEMA-4) LOCAL/REMOTE SELECTOR SWITCH OPEN/STOP/CLOSE SELECTOR SWITCH
LCU W/ KEY	LOCAL CONTROL UNIT (NEMA-4) WITH KEY LOCK
PIU	1K Ohm FEEDBACK POTENTIOMETER
CPT	CURRENT POSITION FEEDBACK TRANSMITTER 4-20mA DC OUTPUT
DCT	VDC POSITION FEEDBACK TRANSMITTER 1-5vdc, 0-5vdc AND 0-10vdc
PCU	PROPORTIONAL CONTROL UNIT 4-20mA, 1-5VDC OR 0-10VDC INPUT
IMS	INTEGRAL MOTOR STARTER INCLUDES REVERSING CONTACTORS AND STEP DOWN TRANSFORMER
CLC	REPEAT CYCLE TIMER FOR CYCLE LENGTH CONTROL
ATS	AUXILIARY TORQUE SWITCHES 2 SPDT SWITCHES (RCEL-15 THRU RCEL-250)

PERFORMANCE

TYPE	MAX OUTPUT TORQUE IN LBS	OPERATING TIME 60/50 hz 90°	DUTY CYCLE 30 MIN THERMALLY PROTECTED	RATED CURRENT (AMPS)				NUMBER OF HANDLE TURN	WEIGHT LBS
				1 PHASE		3 PHASE			
				120vac	220vac	380vac	440vac		
FCEL-150	13020	72/87	80%	3.10/4.90A	1.50/2.34A	.56/1.27A	.57/1.36A	14.5	150
FCEL-200	17360	72/87	70%	4.10/7.50A	2.15/3.70A	.84/1.76A	.78/1.88A	14.5	154
FCEL-250	21700	72/87	70%	4.10/7.50A	2.15/3.70A	.84/1.76A	.78/1.88A	14.5	154

Flomatic Corporation can accept no responsibility for possible errors in catalogues, brochures and other printed material. Flomatic Corporation reserves the right to alter its products without notices. This also applies to product already agreed. All trademarks in this material are property of the respective companies. All rights reserved. ©2022 Flomatic Corporation. The drawings & information on this drawing sheet are the sole & exclusive property of Flomatic Corporation. Any reproduction, distribution, display or use of these drawings or information in whole or in part without written authorization of Flomatic Corporation is strictly prohibited. www.flomatic.com