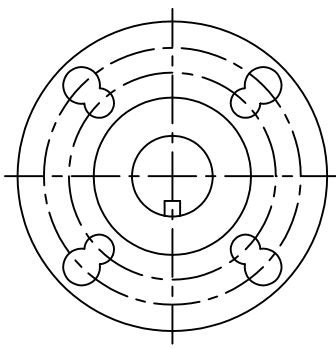
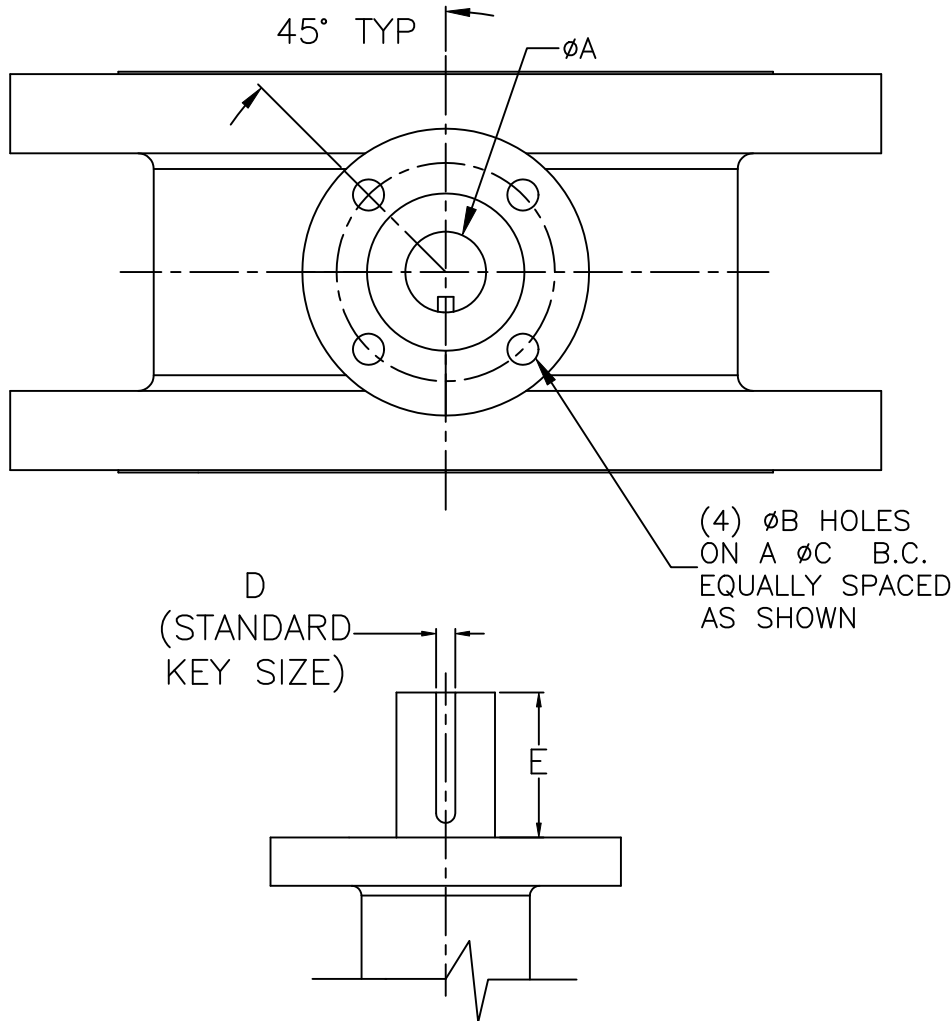


Sizes 3" Thru 24"/ 75 mm Thru 600 mm
Mounting

Dimensions



6", 8" & 10"
16" & 18"
TOP VIEW

Size		ISO 5211 TOP	A		B		C		D		E	
inch	mm		inch	mm	inch	mm	inch	mm	inch	mm	inch	mm
3	75	F07	.56	14.3	.39	10	2.76	70	.13	3.18	1.54	39
4	100	F07	.63	15.9	.39	10	2.76	70	.19	4.76	1.54	39
6	150	F10 & 12	.87	22.2	.47 & .55	12 & 14	4.0 & 4.9	102 & 125	.19	4.76	2.05	52
8	200	F10 & 12	1.13	28.6	.47 & .55	12 & 14	4.0 & 4.9	102 & 125	.25	6.35	2.05	52
10	250	F10 & 12	1.37	34.9	.47 & .55	12 & 14	4.0 & 4.9	102 & 125	.31	7.94	3.00	76
12	300	F12	1.37	34.9	.55	14	4.95	125	.31	7.94	3.00	76
14	350	F12	1.63	41.3	.55	14	4.95	125	.34	9.53	3.00	76
16	400	F14 & 16	1.87	47.6	.71 & .91	18 & 23	5.5 & 6.5	140 & 165	.50	12.7	3.00	76
18	450	F14 & 16	2.25	57.2	.71 & .91	18 & 23	5.5 & 6.5	140 & 165	.50	12.7	3.50	89
20	500	F16	2.25	57.2	.91	23	6.50	165	.50	12.7	3.50	89
24	600	F16	2.25	57.2	.91	23	6.50	165	.50	12.7	3.50	89

Flomatic Corporation can accept no responsibility for possible errors in catalogues, brochures and other printed material. Flomatic Corporation reserves the right to alter its products without notices. This also applies to product already agreed. All trademarks in this material are property of the respective companies. All right reserved. ©2015 Flomatic Corporation. The drawings & information on this drawing sheet are the sole & exclusive property of Flomatic Corporation. Any reproduction, distribution, display or use of these drawings or information in whole or in part without written authorization of Flomatic Corporation is strictly prohibited.