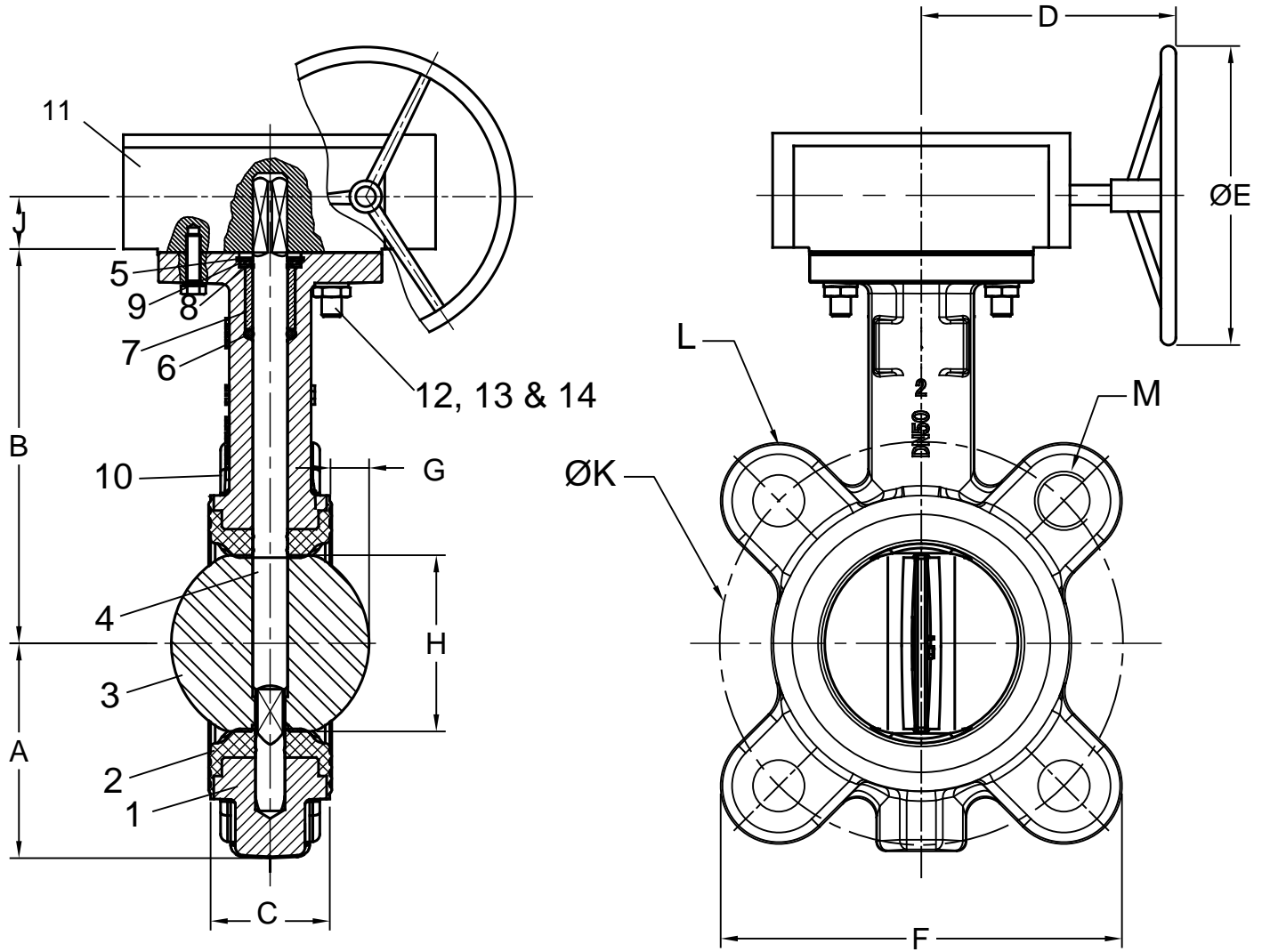




Materials



Max Temp 220°F (104°C)

Max Pressure 250psi (17bar)

Bi-Directional & Dead End Service Pressure Rating 250psi (17 bar)

Item #	Qty	Description	Material	Item #	Qty	Description	Material
1	1	Body	Ductile Iron A536 65-45-12	8	1	Circlip	Steel XC 75/Stainless Steel
2	1	Seat	EPDM	9	1	Washer	Stainless Steel 304
3	1	Disc	Stainless Steel 316	10	1	Metal Tag	Aluminium
4	1	Shaft	Stainless Steel 420	11	1	Gear Box	Ductile Iron A536 65-45-12
5	1	Circlip	Steel XC 75/Stainless Steel	12	2	SHC Screw	Zinc Plated Carbon Steel
6	1	O'Ring	NBR	13	2	Stop Washer	Zinc Plated Carbon Steel
7	1	Bushing	Nylon 1010	14	2	Nut	Zinc Plated Carbon Steel

Flomatic Corporation can accept no responsibility for possible errors in catalogues, brochures and other printed material. Flomatic Corporation reserves the right to alter its products without notices. This also applies to product already agreed. All trademarks in this material are property of the respective companies. All rights reserved. ©2020 Flomatic Corporation. The drawings & information on this drawing sheet are the sole & exclusive property of Flomatic Corporation. Any reproduction, distribution, display or use of these drawings or information in whole or in part without written authorization of Flomatic Corporation is strictly prohibited. www.flomatic.com

Sizes 2" Thru 3" / 50 mm Thru 75 mm

Dimensions (ASME B16.42 150# Flange / ISO 5211 Top Flange)

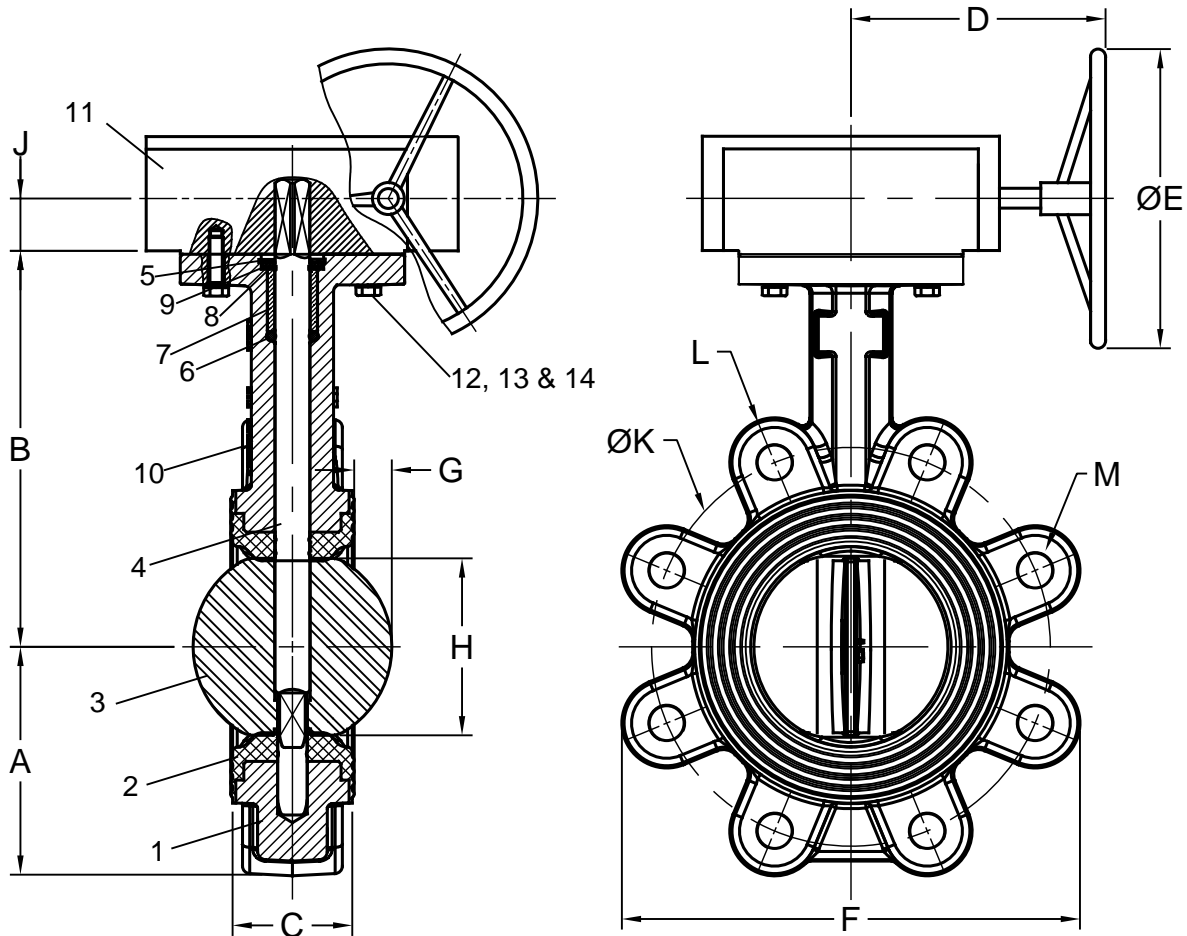
Size		Part #	A		B	
inch	mm		inch	mm	inch	mm
2	50	S3L04G	2.5	65	5.67	144
2-1/2	65	S3L05G	2.8	72	6.02	153
3	80	S3L06G	3.4	86	6.22	158

Size		C		D		ØE		F		G		H		J		ØK		L	M	Wgt Lug	
inch	mm	inch	mm	inch	mm	inch	mm	inch	mm	inch	mm	inch	mm	inch	mm	inch	mm	# of Holes	Thread	lbs	kg
2	50	1.69	43	6.22	158	5.91	150	4.93	125	.21	5	2.12	54	1.15	29	4.75	120.7	4	5/8-11	14.2	6.4
2-1/2	65	1.81	46	6.22	158	5.91	150	5.47	139	.38	10	2.57	65	1.15	29	5.50	139.7	4	5/8-11	15.6	7.1
3	80	1.81	46	6.22	158	5.91	150	5.63	143	.66	17	3.14	80	1.15	29	6.00	152.4	4	5/8-11	16.1	7.3

Flomatic Corporation can accept no responsibility for possible errors in catalogues, brochures and other printed material. Flomatic Corporation reserves the right to alter its products without notices. This also applies to product already agreed. All trademarks in this material are property of the respective companies. All rights reserved. ©2020 Flomatic Corporation. The drawings & information on this drawing sheet are the sole & exclusive property of Flomatic Corporation. Any reproduction, distribution, display or use of these drawings or information in whole or in part without written authorization of Flomatic Corporation is strictly prohibited. www.flomatic.com



Materials



Max Temp 220°F (104°C)
Max Pressure 250psi (17bar)

Bi-Directional & Dead End Service Pressure Rating 250psi (17 bar)

Item #	Qty	Description	Material	Item #	Qty	Description	Material
1	1	Body	Ductile Iron A536 65-45-12	8	1	Circlip	Steel XC 75/Stainless Steel
2	1	Seat	EPDM	9	1	Washer	Stainless Steel 304
3	1	Disc	Stainless Steel 316	10	1	Metal Tag	Aluminium
4	1	Shaft	Stainless Steel 420	11	1	Gear Box	Ductile Iron A536 65-45-12
5	1	Circlip	Steel XC 75/Stainless Steel	12	2	SHC Screw	Zinc Plated Carbon Steel
6	1	O'Ring	NBR	13	2	Stop Washer	Zinc Plated Carbon Steel
7	1	Bushing	Nylon 1010	14	2	Nut	Zinc Plated Carbon Steel

Flomatic Corporation can accept no responsibility for possible errors in catalogues, brochures and other printed material. Flomatic Corporation reserves the right to alter its products without notices. This also applies to product already agreed. All trademarks in this material are property of the respective companies. All rights reserved. ©2020 Flomatic Corporation. The drawings & information on this drawing sheet are the sole & exclusive property of Flomatic Corporation. Any reproduction, distribution, display or use of these drawings or information in whole or in part without written authorization of Flomatic Corporation is strictly prohibited. www.flomatic.com

Sizes 2" Thru 8" / 100 mm Thru 200 mm

Dimensions (ASME B16.42 150# Flange / ISO 5211 Top Flange)

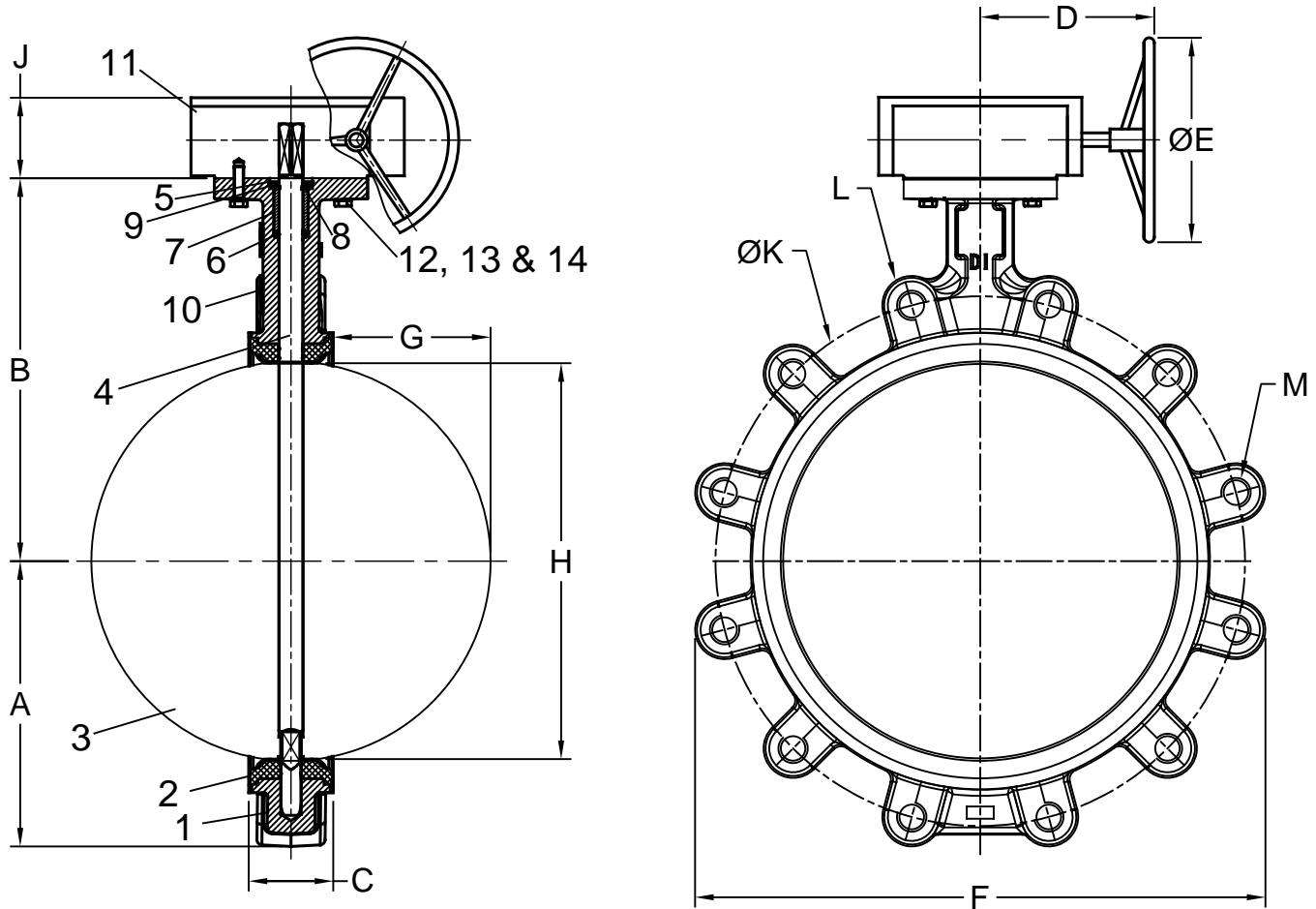
Size		Part #	A		B	
inch	mm		inch	mm	inch	mm
4	100	S3L07G	4.2	107	6.93	176
5	125	S3L08G	4.7	119	7.52	191
6	150	S3L09G	5.0	128	7.97	203
8	200	S3L10G	6.4	162	9.59	244

Size		C		D		ØE		F		G		H		J		ØK		L # of Holes	M Thread	Wgt Lug	
inch	mm	inch	mm	inch	mm	inch	mm	inch	mm	inch	mm	inch	mm	inch	mm	inch	mm			lbs	kg
4	100	2.05	52	6.22	158	5.91	150	8.34	212	1.04	27	4.14	105	1.15	29	7.50	190.5	8	5/8-11	22.5	10.2
5	125	2.20	56	6.22	158	5.91	150	9.40	239	1.46	37	5.13	130	1.15	29	8.50	215.9	8	3/4-10	29.7	13.5
6	150	2.20	56	6.22	158	5.91	150	10.50	267	1.97	50	6.14	156	1.15	29	9.50	241.3	8	3/4-10	34.1	15.5
8	200	2.36	60	9.41	239	11.81	300	12.70	323	2.95	75	8.14	207	1.33	34	11.75	298.5	8	3/4-10	64.5	29.3

Flomatic Corporation can accept no responsibility for possible errors in catalogues, brochures and other printed material. Flomatic Corporation reserves the right to alter its products without notices. This also applies to product already agreed. All trademarks in this material are property of the respective companies. All rights reserved. ©2020 Flomatic Corporation. The drawings & information on this drawing sheet are the sole & exclusive property of Flomatic Corporation. Any reproduction, distribution, display or use of these drawings or information in whole or in part without written authorization of Flomatic Corporation is strictly prohibited. www.flomatic.com



Materials



Max Temp 220°F (104°C)
 Max Pressure 250psi (17bar)
 Bi-Directional & Dead End Service Pressure Rating 250psi (17 bar)

Item #	Qty	Description	Material	Item #	Qty	Description	Material
1	1	Body	Ductile Iron A536 65-45-12	8	1	Circlip	Steel XC 75/Stainless Steel
2	1	Seat	EPDM	9	1	Washer	Stainless Steel 304
3	1	Disc	Stainless Steel 316	10	1	Metal Tag	Aluminium
4	1	Shaft	Stainless Steel 420	11	1	Gear Box	Ductile Iron A536 65-45-12
5	1	Circlip	Steel XC 75/Stainless Steel	12	2	SHC Screw	Zinc Plated Carbon Steel
6	1	O'Ring	NBR	13	2	Stop Washer	Zinc Plated Carbon Steel
7	1	Bushing	Nylon 1010	14	2	Nut	Zinc Plated Carbon Steel

Flomatic Corporation can accept no responsibility for possible errors in catalogues, brochures and other printed material. Flomatic Corporation reserves the right to alter its products without notices. This also applies to product already agreed. All trademarks in this material are property of the respective companies. All rights reserved. ©2020 Flomatic Corporation. The drawings & information on this drawing sheet are the sole & exclusive property of Flomatic Corporation. Any reproduction, distribution, display or use of these drawings or information in whole or in part without written authorization of Flomatic Corporation is strictly prohibited. www.flomatic.com

Dimensions (ASME B16.42 150# Flange / ISO 5211 Top Flange)

Size		Part #	A		B	
inch	mm		inch	mm	inch	mm
10	250	S3L11G	7.6	194	10.75	273
12	300	S3L12G	8.8	223	12.24	311

Size		C		D		ØE		F		G		H		J		ØK		L	M	Wgt Lug	
inch	mm	inch	mm	inch	mm	inch	mm	inch	mm	inch	mm	inch	mm	inch	mm	inch	mm	# of Holes	Thread	lbs	kg
10	250	2.68	68	9.41	239	11.81	300	15.59	396	3.70	94	9.97	253	1.33	34	14.25	362.0	12	7/8-9	86	39
12	300	3.07	78	9.41	239	11.81	300	18.18	462	4.46	113	11.90	302	1.42	36	17.00	431.8	12	7/8-9	118.2	53.6

Flomatic Corporation can accept no responsibility for possible errors in catalogues, brochures and other printed material. Flomatic Corporation reserves the right to alter its products without notices. This also applies to product already agreed. All trademarks in this material are property of the respective companies. All rights reserved. ©2020 Flomatic Corporation. The drawings & information on this drawing sheet are the sole & exclusive property of Flomatic Corporation. Any reproduction, distribution, display or use of these drawings or information in whole or in part without written authorization of Flomatic Corporation is strictly prohibited. www.flomatic.com