

# Ductile Iron Check Valve

# Model 80DIX

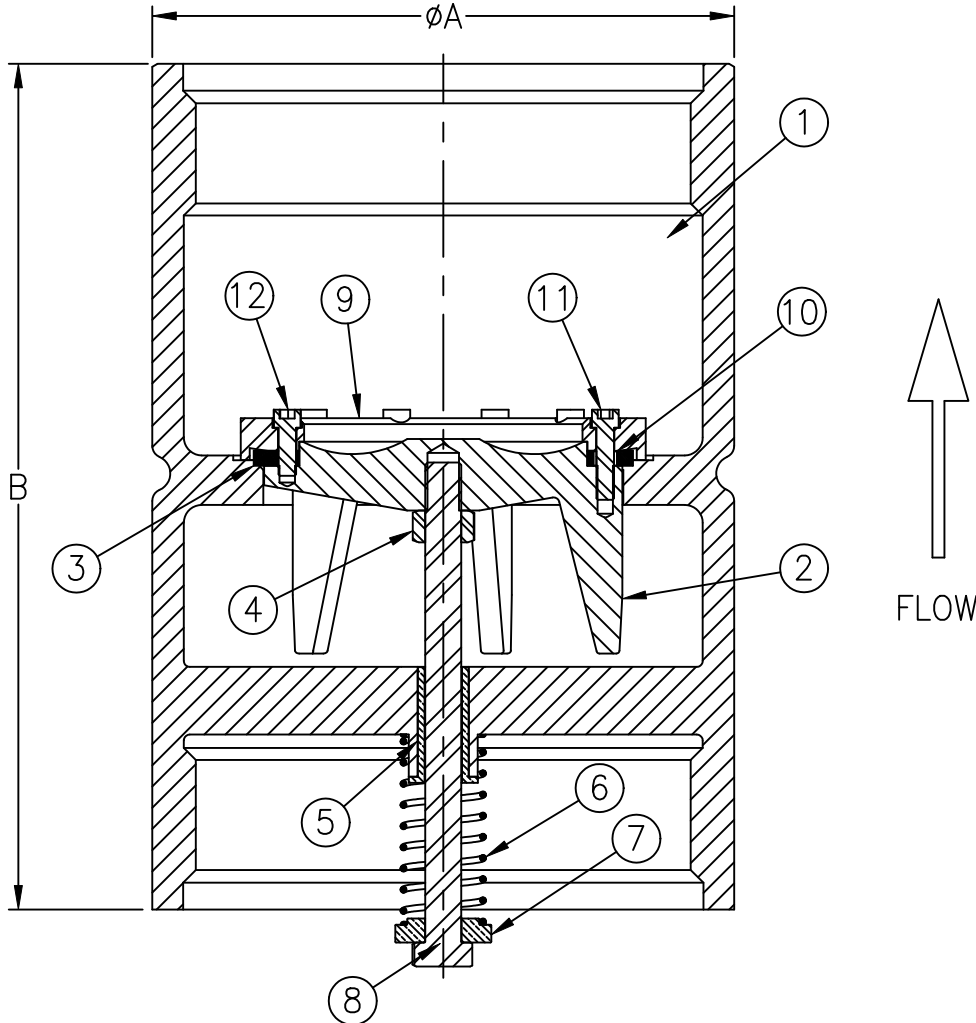


Flomatic Corporation

Sizes 10" / 250 mm



## Materials



### DOUBLE GUIDED POPPET SUITABLE FOR VERTICAL & HORIZONTAL INSTALLATIONS

Item #	Qty	Description	Material	ASTM	Item #	Qty	Description	Material	ASTM
1	1	Body (Epoxy Coated)	Ductile Iron	A536	7	1	Spring Retainer	Bronze	B271
2	1	Poppet (Epoxy Coated)	Ductile Iron	A536	8	1	Bolt	Stainless Steel	18-8
3	1	Rubber Disc	Buna-n	---	9	1	Poppet Retainer (Epoxy Coated)	CRS	---
4	1	Nut	Stainless Steel	18-8	10	5	Spacer	Stainless Steel	304
5	1	Bushing	Bronze	B271	11	5	SHCS	Stainless Steel	304
6	1	Spring	Stainless Steel	18-8	12	5	SHCS	Stainless Steel	304

## Dimensions

Max Temp 180°F (82°C)  
Max Pressure 400psi (28bar)

Size		Part #	A		B		Weight	
Inch	mm		Inch	mm	Inch	mm	lbs	kg
10	250	4091DIX	12-1/8	308	17-5/8	448	150	68

Flomatic Corporation can accept no responsibility for possible errors in catalogues, brochures and other printed material. Flomatic Corporation reserves the right to alter its products without notices. This also applies to product already agreed. All trademarks in this material are property of the respective companies. All right reserved. ©2011 Flomatic Corporation. The drawings & information on this drawing sheet are the sole & exclusive property of Flomatic Corporation. Any reproduction, distribution, display or use of these drawings or information in whole or in part without written authorization of Flomatic Corporation is strictly prohibited.



April 16, 2003  
Dwg No: S4091DIX Rev: C (6/13)

FLOMATIC CORPORATION  
GLENS FALLS, N.Y. 12801  
PHONE (518) 761-9797  
FAX (518) 761-9798