

# Ductile Iron Check Valve

Sizes 2-1/2" / 65 mm

Model 80DIA

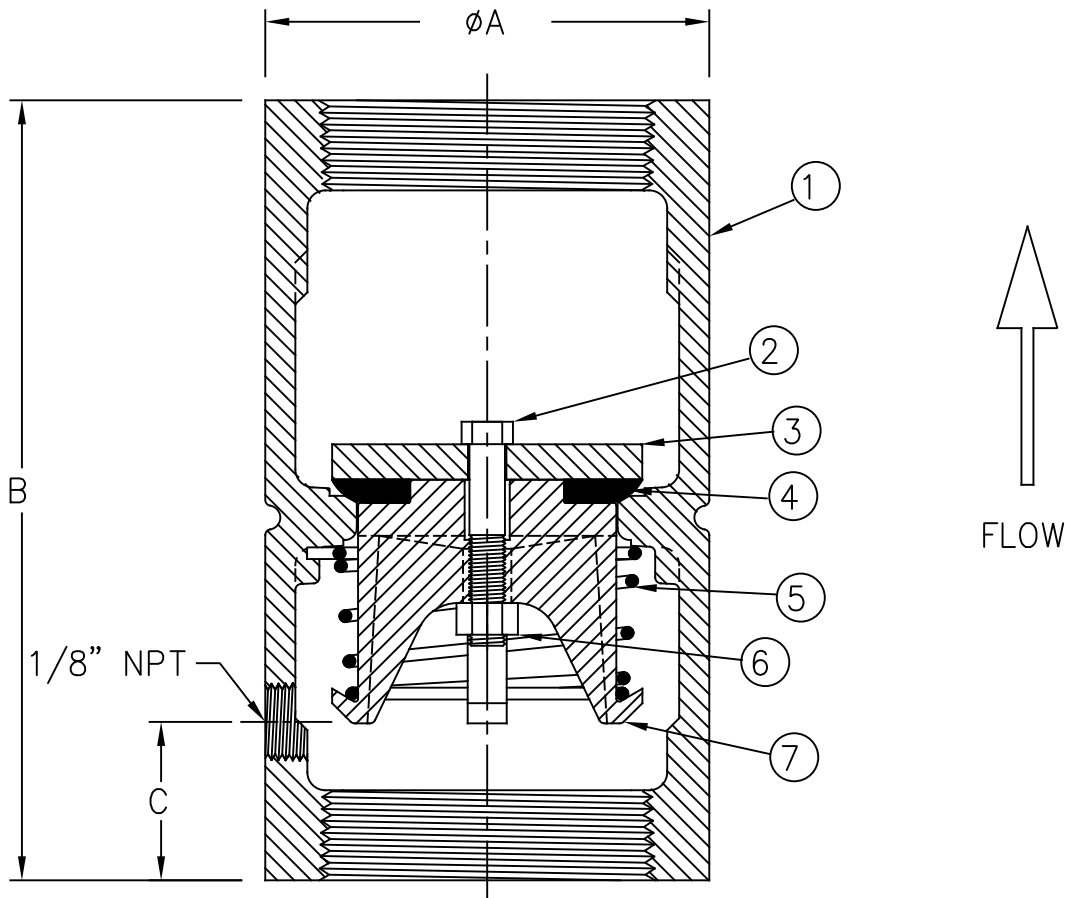


Flomatic Corporation

LEAD FREE  
NSF/ANSI 61



## Materials



Max Temp 180°F (82°C)  
Max Pressure 400psi (24bar)

Item #	Qty	Description	Material	ASTM
1	1	Body (Epoxy Coated)	Ductile Iron	65-45-12
2	1	Bolt	Stainless Steel	304
3	1	Washer	Stainless Steel	304
4	1	Rubber Disc	Buna-n	N-5007
5	1	Spring	Stainless Steel	302
6	1	Nut	Stainless Steel	304
7	1	Guide	Federalloy	C89833

## Dimensions (FNPT X FNPT)

Size		Part #	A		B		C		Weight	
inch	mm		inch	mm	inch	mm	inch	mm	lbs	kg
2-1/2	65	4045DI	3-5/8	92	7-3/16	183	1-5/16	33	7	3

Flomatic Corporation can accept no responsibility for possible errors in catalogues, brochures and other printed material. Flomatic Corporation reserves the right to alter its products without notices. This also applies to product already agreed. All trademarks in this material are property of the respective companies. All right reserved. ©2018 Flomatic Corporation. The drawings & information on this drawing sheet are the sole & exclusive property of Flomatic Corporation. Any reproduction, distribution, display or use of these drawings or information in whole or in part without written authorization of Flomatic Corporation is strictly prohibited. [www.flomatic.com](http://www.flomatic.com)



January 14, 1998  
Dwg No: S4045DI Rev: E (11/18)

FLOMATIC CORPORATION  
GLENS FALLS, N.Y. 12801  
PHONE (518) 761-9797  
FAX (518) 761-9798