

# Stainless Steel Check Valve

# Model 812J



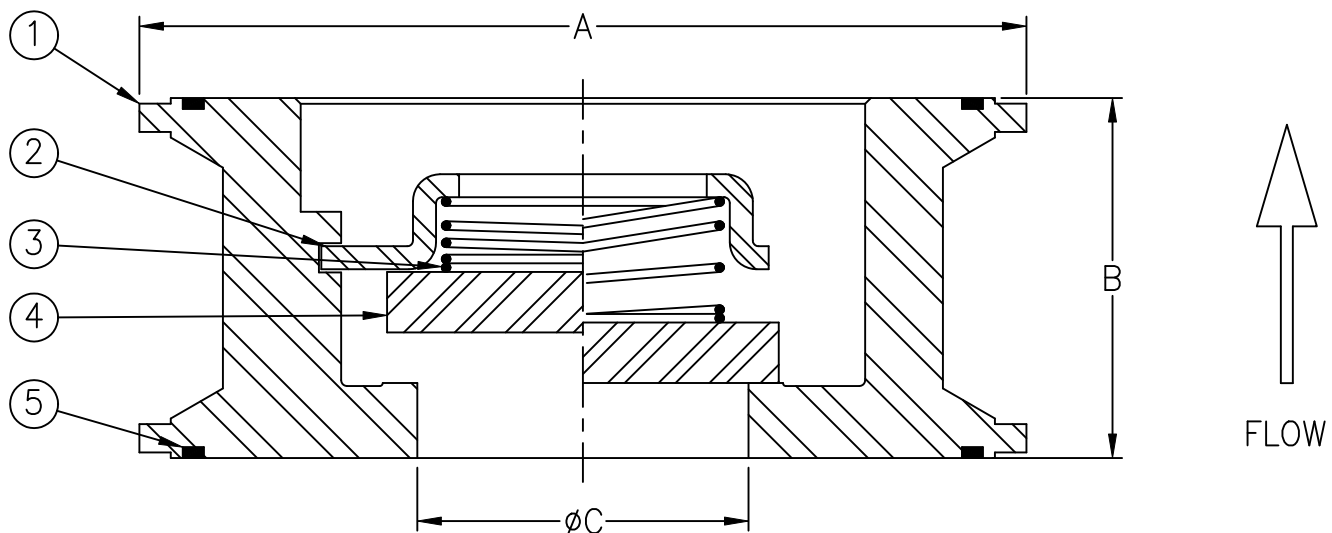
Flomatic Corporation

Sizes 3" thru 4" / 80mm thru 100mm



## Materials

USED ONLY FOR THE 812XT, XTF & XFF  
THIS SPEC SHEET IS FOR REF ONLY



Max Temp 450°F (232°C)  
Max Pressure 1000psi (69bar)

| Item # | Qty | Description | Material        | ASTM  |
|--------|-----|-------------|-----------------|-------|
| 1      | 1   | Body        | Stainless Steel | 316   |
| 2      | 1   | Holder      | Stainless Steel | 316   |
| 3      | 1   | Spring      | Stainless Steel | 316   |
| 4      | 1   | Disc*       | Stainless Steel | 316   |
| 5      | 2   | Seal        | PTFE            | ----- |

\*Viton or Buna seating available consult factory for part number.

## Dimensions

| Size |     | Part # | A    |     | B    |    | C    |    | Weight |      |
|------|-----|--------|------|-----|------|----|------|----|--------|------|
| Inch | mm  |        | Inch | mm  | Inch | mm | Inch | mm | lbs    | kg   |
| 3    | 80  | 2427J  | 5.56 | 141 | 2.20 | 56 | 2.99 | 76 | 4.50   | 2.04 |
| 4    | 100 | 2428J  | 6.76 | 172 | 2.76 | 70 | 3.81 | 97 | 8.10   | 3.67 |

Flomatic Corporation can accept no responsibility for possible errors in catalogues, brochures and other printed material. Flomatic Corporation reserves the right to alter its products without notices. This also applies to product already agreed. All trademarks in this material are property of the respective companies. All right reserved. ©2011 Flomatic Corporation. The drawings & information on this drawing sheet are the sole & exclusive property of Flomatic Corporation. Any reproduction, distribution, display or use of these drawings or information in whole or in part without written authorization of Flomatic Corporation is strictly prohibited.



January 25, 2005  
Dwg No: S812J-2 Rev: C (10/13)

FLOMATIC CORPORATION  
GLENS FALLS, N.Y. 12801  
PHONE (518) 761-9797  
FAX (518) 761-9798