

Stainless Steel Check Valve

Model 80SS



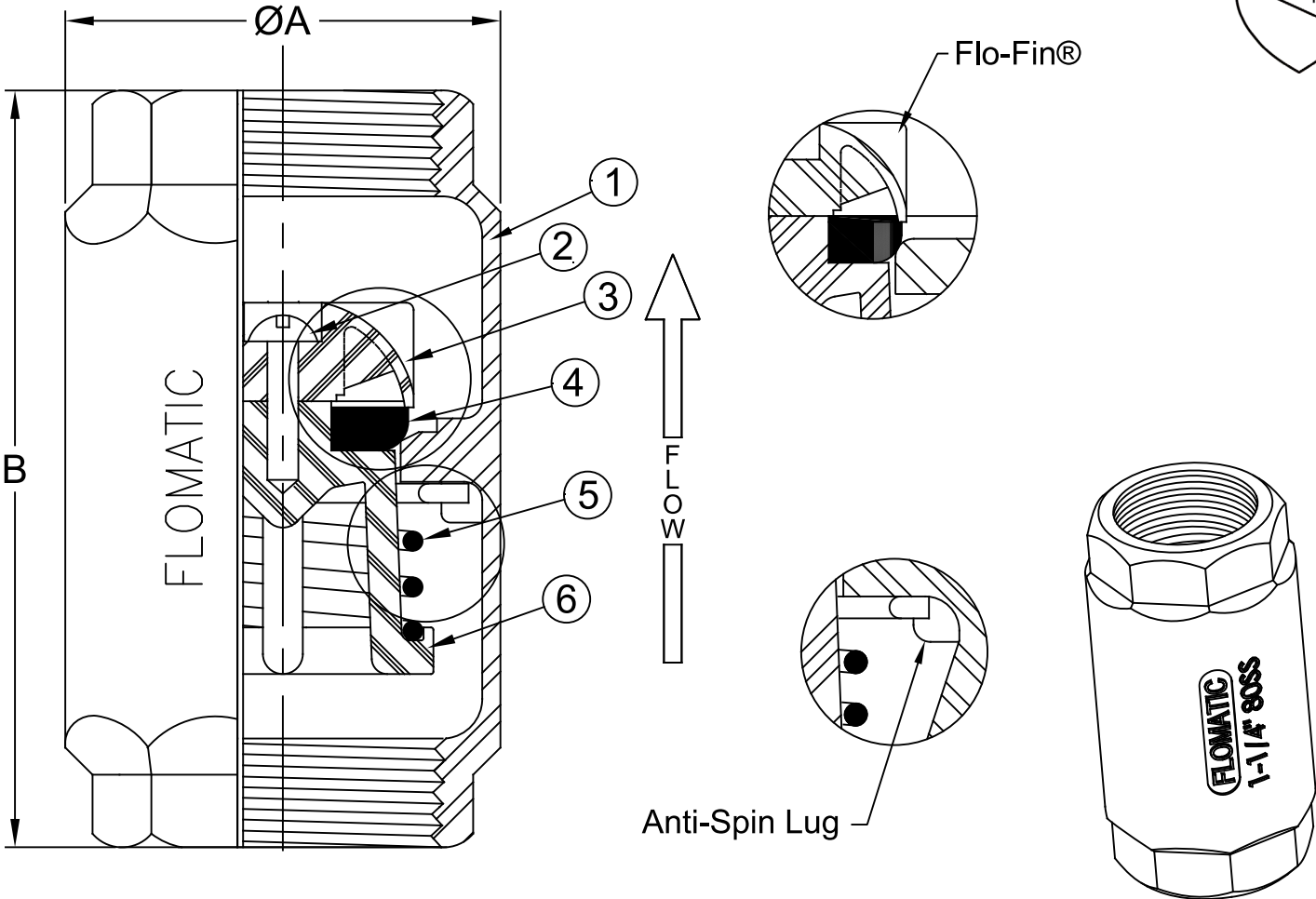
Flomatic Corporation

Sizes 1" thru 1-1/2"/ 25mm thru 40mm

LEAD FREE
NSF/ANSI 61



Materials



Temp Max: 180°F (80°C)
Pressure Max: 400 psi (28 Bar)

| Item # | Qty | Description | Material |
|--------|-----|-------------|---------------|
| 1 | 1 | Body | 304 SS |
| 2 | 1 | Screw | 302 SS |
| 3 | 1 | Dome | Delrin 500P |
| 4 | 1 | Disc | Buna-n N-5007 |
| 5 | 1 | Spring | 302 SS |
| 6 | 1 | Guide* | Delrin 500P |

*1" uses Celcongc 10
1-1/2" uses an 304SS nut

Dimensions (FNPT x FNPT)

Patent # 4,971,093 & 6,581,633

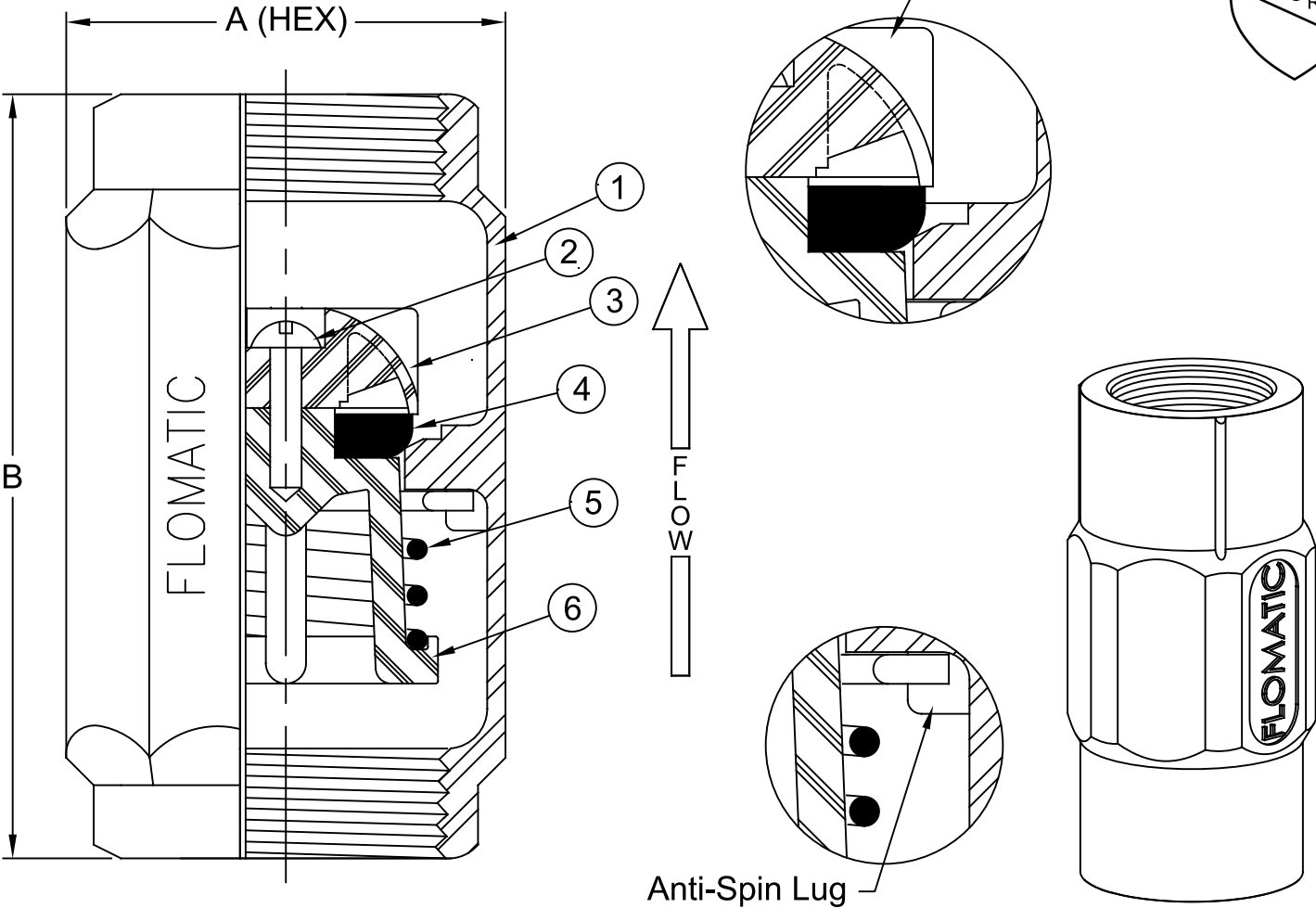
ANSI B1.20.1

| Size | | Part # | ØA | | B | | NPT | Weight | |
|-------|----|---------|------|----|------|-----|-------|--------|-----|
| inch | mm | | inch | mm | inch | mm | | lbs | kg |
| 1 | 25 | 4031SS2 | 1.84 | 47 | 3.57 | 91 | 1 | 1.05 | .48 |
| 1-1/4 | 32 | 4032SS2 | 2.19 | 56 | 4.19 | 106 | 1-1/4 | 1.55 | .70 |
| 1-1/2 | 40 | 4033SS2 | 2.59 | 66 | 4.63 | 118 | 1-1/2 | 2.20 | 1.0 |

Flomatic Corporation can accept no responsibility for possible errors in catalogues, brochures and other printed material. Flomatic Corporation reserves the right to alter its products without notices. This also applies to product already agreed. All trademarks in this material are property of the respective companies. All rights reserved. ©2025 Flomatic Corporation. The drawings & information on this drawing sheet are the sole & exclusive property of Flomatic Corporation. Any reproduction, distribution, display or use of these drawings or information in whole or in part without written authorization of Flomatic Corporation is strictly prohibited. www.flomatic.com



Materials



Temp Max: 180°F (80°C)
Pressure Max: 400 psi (28 Bar)

| Item # | Qty | Description | Material |
|--------|-----|-------------|---------------|
| 1 | 1 | Body | 304 SS |
| 2 | 1 | Screw | 302 SS |
| 3 | 1 | Dome | Delrin 500P |
| 4 | 1 | Disc | Buna-n N-5007 |
| 5 | 1 | Spring | 302 SS |
| 6 | 1 | Guide* | Celcongc 10 |

*1-1/4" uses Delrin 500P

Patent # 4,971,093 & 6,581,633

Dimensions (FNPT x FNPT)

ANSI B1.20.1

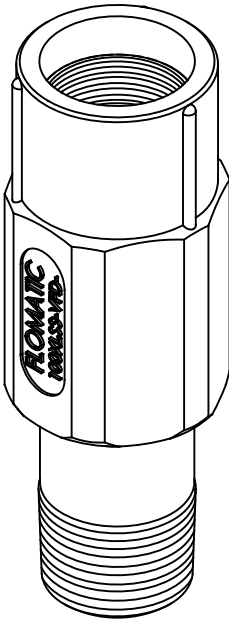
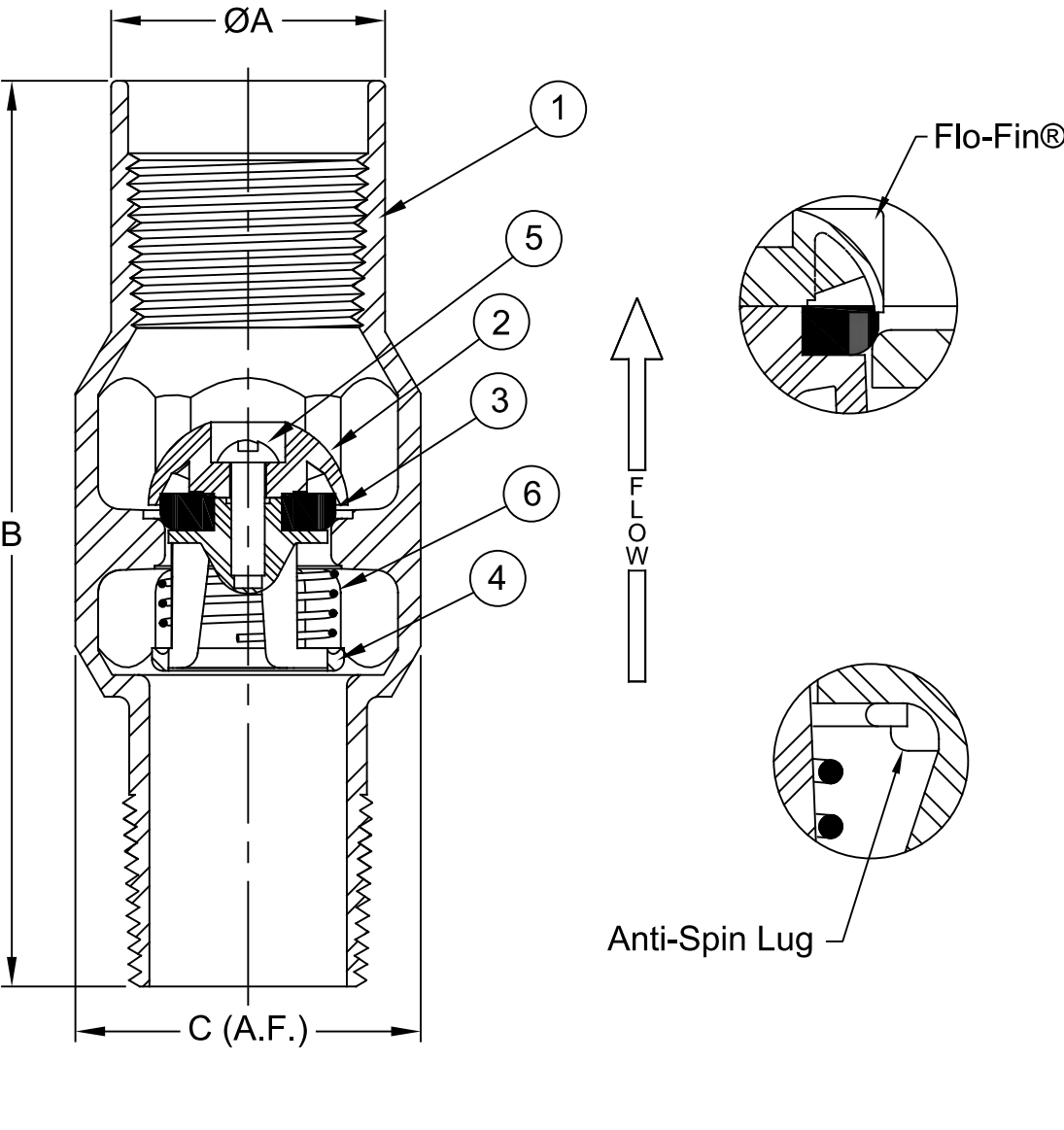
| Size | | Part # | A (HEX) | | B | | NPT | Weight | |
|--------|----|----------|---------|----|------|-----|-------|--------|-----|
| inch | mm | | inch | mm | inch | mm | | lbs | kg |
| 1 | 25 | 4201SS2 | 1.91 | 49 | 3.75 | 95 | 1 | 1.05 | .50 |
| 1 LONG | 25 | 4201LSS2 | 1.91 | 49 | 3.88 | 98 | 1 | 1.25 | .59 |
| 1-1/4 | 32 | 4202SS2 | 2.25 | 57 | 3.93 | 100 | 1-1/4 | 1.30 | .59 |

Flomatic Corporation can accept no responsibility for possible errors in catalogues, brochures and other printed material. Flomatic Corporation reserves the right to alter its products without notices. This also applies to product already agreed. All trademarks in this material are property of the respective companies. All rights reserved. ©2025 Flomatic Corporation. The drawings & information on this drawing sheet are the sole & exclusive property of Flomatic Corporation. Any reproduction, distribution, display or use of these drawings or information in whole or in part without written authorization of Flomatic Corporation is strictly prohibited. www.flomatic.com

Stainless Steel Check Valve

Sizes 1"M x 1"F / 25mm x 25mm

Materials



Max Temp 180°F (82°C)
Max Pressure 400psi (28bar)

| Item # | Qty | Description | Material | ASTM | Item # | Qty | Description | Material | ASTM |
|--------|-----|-------------|-----------------|--------|--------|-----|-------------|-----------------|------|
| 1 | 1 | Body | Stainless Steel | 402 | 4 | 1 | Guide | Delrin | 500P |
| 2 | 1 | Dome | Delrin | 8020 | 5 | 1 | Screw | Stainless Steel | 302 |
| 3 | 1 | Disc | Buna-n | N-5007 | 6 | 1 | Spring | Stainless Steel | 302 |

Dimensions (MNPT x FNPT)

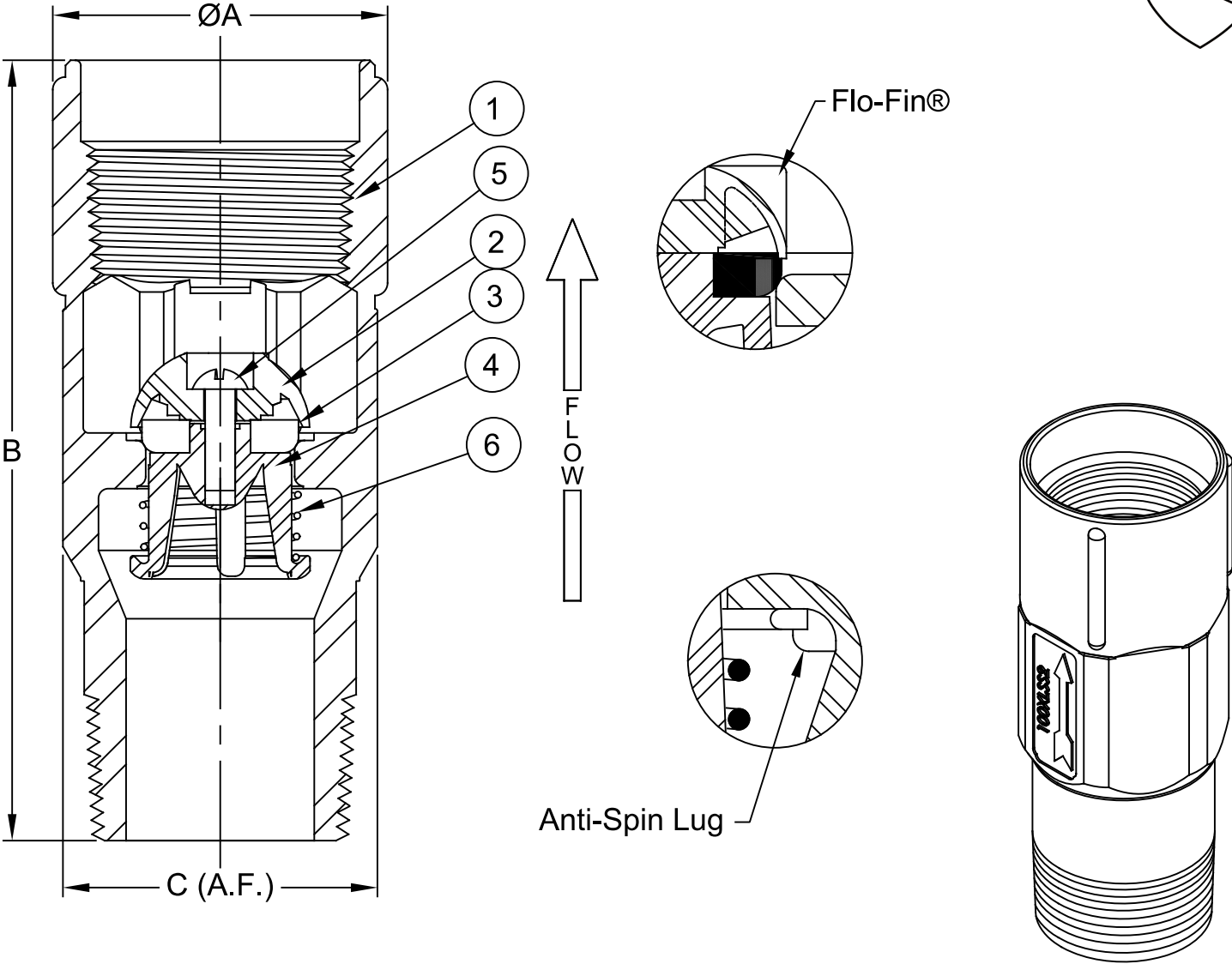
Patent # 4,971,09 & 6,581,633

ANSI B1.20.1

| Size | | Part # | ØA | | B | | C (A.F.) | | NPT | Weight | |
|------|----|-----------|------|----|------|-----|----------|----|-----|--------|-----|
| inch | mm | | inch | mm | inch | mm | inch | mm | | lbs | kg |
| 1 | 25 | 4201XLSS2 | 1.69 | 43 | 5.25 | 133 | 1.91 | 49 | 1 | 1.05 | .48 |

Flomatic Corporation can accept no responsibility for possible errors in catalogues, brochures and other printed material. Flomatic Corporation reserves the right to alter its products without notices. This also applies to product already agreed. All trademarks in this material are property of the respective companies. All rights reserved. ©2025 Flomatic Corporation. The drawings & information on this drawing sheet are the sole & exclusive property of Flomatic Corporation. Any reproduction, distribution, display or use of these drawings or information in whole or in part without written authorization of Flomatic Corporation is strictly prohibited. www.flomatic.com

Materials



Max Temp 180°F (82°C)
Max Pressure 400psi (28bar)

| Item # | Qty | Description | Material | ASTM | Item # | Qty | Description | Material | ASTM |
|--------|-----|-------------|-----------------|--------|--------|-----|-------------|-----------------|------|
| 1 | 1 | Body | Stainless Steel | 304 | 4 | 1 | Guide | Celcongc 10 | ---- |
| 2 | 1 | Dome | Delrin | 500P | 5 | 1 | Screw | Stainless Steel | 302 |
| 3 | 1 | Disc | Buna-n | N-5007 | 6 | 1 | Spring | Stainless Steel | 302 |

Dimensions (MNPT x FNPT)

ANSI B1.20.1

Patent # 4,971,09 & 6,581,633

| Size | | Part # | ØA | | B | | C (A.F.) | | NPT | Weight | |
|-------|----|-----------|------|----|------|-----|----------|----|-------|--------|-----|
| inch | mm | | inch | mm | inch | mm | inch | mm | | lbs | kg |
| 1-1/4 | 32 | 4242XLSS2 | 2.06 | 52 | 5.06 | 129 | 1.94 | 49 | 1-1/4 | 4.45 | .66 |

Flomatic Corporation can accept no responsibility for possible errors in catalogues, brochures and other printed material. Flomatic Corporation reserves the right to alter its products without notices. This also applies to product already agreed. All trademarks in this material are property of the respective companies. All rights reserved. ©2024 Flomatic Corporation. The drawings & information on this drawing sheet are the sole & exclusive property of Flomatic Corporation. Any reproduction, distribution, display or use of these drawings or information in whole or in part without written authorization of Flomatic Corporation is strictly prohibited. www.flomatic.com