

Stainless Steel Check Valve

Model 100XLSS

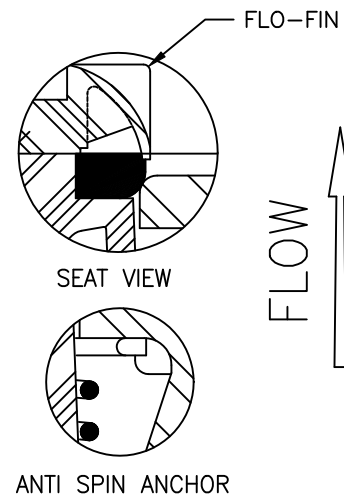
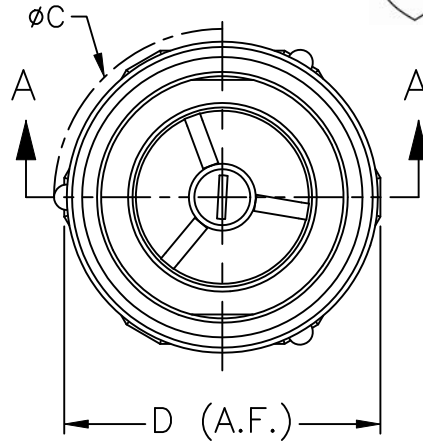
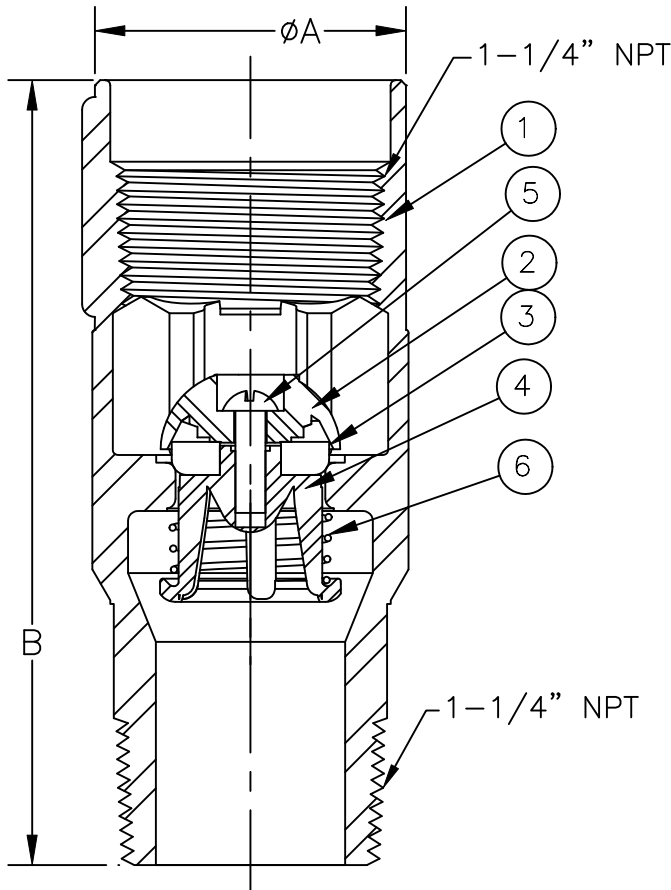


Fromatic Corporation

Sizes 1-1/4" / 32mm



Materials



Max Temp 180°F (82°C)
Max Pressure 400psi (28bar)

Item #	Qty	Description	Material	ASTM	Item #	Qty	Description	Material	ASTM
1	1	Body	Stainless Steel	303	4	1	Guide	Delrin	-----
2	1	Dome	Delrin	-----	5	1	Screw	Stainless Steel	18-8
3	1	Disc	Buna-n	-----	6	1	Spring	Stainless Steel	302

Dimensions

Patent # 4,971,09 & 6,581,633

Size		Part #	A		B		C		D		Weight	
inch	mm		inch	mm	inch	mm	inch	mm	inch	mm	lbs	kg
1-1/4	32	4242XLSS2	1-29/32	48	5-1/16	129	2-1/16	52	1-15/16	49	2	.91

Fromatic Corporation can accept no responsibility for possible errors in catalogues, brochures and other printed material. Fromatic Corporation reserves the right to alter its products without notices. This also applies to product already agreed. All trademarks in this material are property of the respective companies. All right reserved. ©2011 Fromatic Corporation. The drawings & information on this drawing sheet are the sole & exclusive property of Fromatic Corporation. Any reproduction, distribution, display or use of these drawings or information in whole or in part without written authorization of Fromatic Corporation is strictly prohibited.



May 18, 2006
Dwg No: S4242XLSS2 Rev: B (4/13)

FLOMATIC CORPORATION
GLENS FALLS, N.Y. 12801
PHONE (518) 761-9797
FAX (518) 761-9798