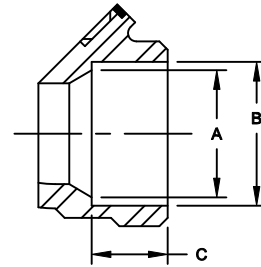
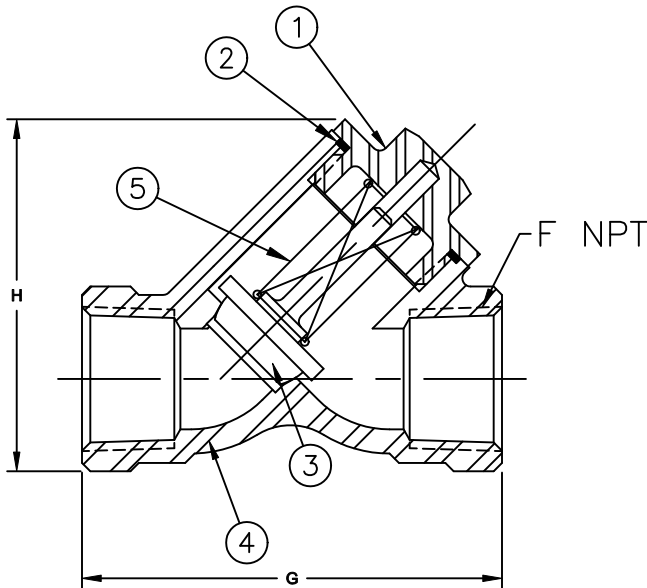
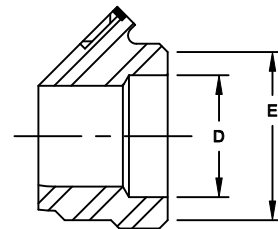


**Materials**



SOCKET WELD



BUTT WELD

Max Temp 450°F (230°C)  
Max Pressure 600psi (43bar)

Item #	Qty	Description	Material	ASTM
1	1	Cap	Stainless Steel	316
2	1	Gasket	PTFE	-----
3	1	Plunger Assembly	Stainless Steel/PTFE	316
4	1	Body	Stainless Steel	316
5	1	Spring	Stainless Steel	316

**Dimensions**

Size		Part #	A		B		C		D		E		F		G		H		Weight	
Inch	mm		Inch	mm	Inch	mm	Inch	mm	Inch	mm	Inch	mm	Inch	mm	Inch	mm	Inch	mm	lbs	kg
1/4	8	YV250110100	.37	9	.86	22	.50	13	.62	16	.84	21	.25	6	2.44	62	2.20	56	.9	.41
3/8	10	YV375110100	.50	13	.71	18	.50	13	.50	13	.84	21	.38	10	2.44	62	2.20	56	.85	.39
1/2	15	YV500110100	.62	16	.86	22	.50	13	.62	16	.84	21	.50	13	2.44	62	2.20	56	.8	.36
3/4	20	YV750110100	.82	21	1.07	27	.56	14	.82	21	1.05	27	.75	19	3.13	80	2.76	70	1.2	.54
1	25	YV001110100	1.05	27	1.34	34	.63	16	1.05	27	1.31	33	1.00	25	3.50	89	3.30	84	1.7	.77
1-1/4	32	YV125110100	1.38	35	1.68	43	.69	18	1.38	35	1.66	42	1.25	32	4.75	121	3.95	100	4.0	1.8
1-1/2	40	YV015110100	1.61	41	1.92	49	.75	19	1.61	41	1.91	49	1.50	38	4.75	121	4.43	113	4.0	1.8
2	50	YV002110100	2.07	53	2.41	61	.88	22	2.07	53	2.38	60	2.00	51	6.00	152	5.49	139	6.7	3.0

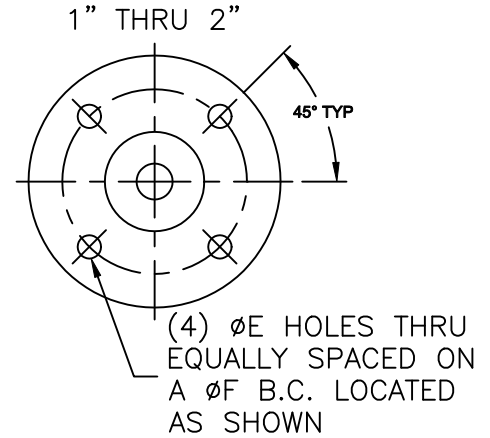
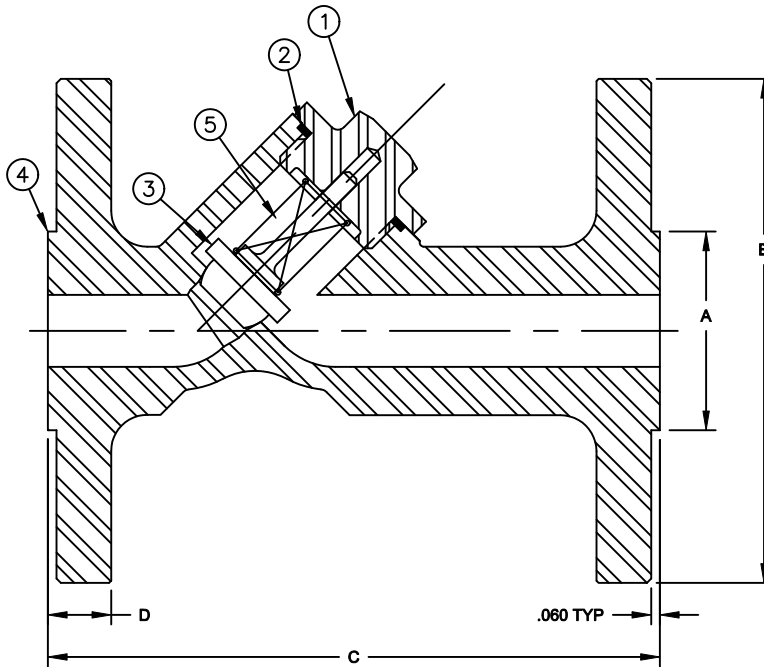
Flomatic Corporation can accept no responsibility for possible errors in catalogues, brochures and other printed material. Flomatic Corporation reserves the right to alter its products without notices. This also applies to product already agreed. All trademarks in this material are property of the respective companies. All right reserved. ©2011 Flomatic Corporation. The drawings & information on this drawing sheet are the sole & exclusive property of Flomatic Corporation. Any reproduction, distribution, display or use of these drawings or information in whole or in part without written authorization of Flomatic Corporation is strictly prohibited.

# Stainless Steel Check Valve 150# Flange Model 816FL



Flomatic Corporation

Sizes 1" thru 2" / 25mm thru 50mm



Max Temp 450°F (230°C)  
Max Pressure 600psi (43bar)

Item #	Qty	Description	Material	ASTM
1	1	Cap	Stainless Steel	316
2	1	Gasket	PTFE	_____
3	1	Plunger Assembly	Stainless Steel/PTFE	316
4	1	Body	Stainless Steel	316
5	1	Spring	Stainless Steel	316

## Dimensions

Size		Part #	A		B		C		D		E		F (REF)		Weight	
inch	mm		inch	mm	inch	mm	inch	mm	inch	mm	inch	mm	inch	mm	lbs	kg
1	25	YV001410100	2-1/8	54	4-1/4	108	5	127	7/16	11	5/8	16	3-1/8	79	5.4	2.4
1-1/4	32	YV125410100	2-1/2	64	4-5/8	117	5-1/2	140	1/2	13	5/8	16	3-1/2	89	7.6	3.4
1-1/2	40	YV015410100	2-7/8	73	5	127	6-1/2	165	9/16	14	5/8	16	3-7/8	98	10	4.5
2	50	YV002410100	3-5/8	92	6	152	8	203	5/8	16	3/4	19	4-3/4	121	15.3	6.9

Flomatic Corporation can accept no responsibility for possible errors in catalogues, brochures and other printed material. Flomatic Corporation reserves the right to alter its products without notices. This also applies to product already agreed. All trademarks in this material are property of the respective companies. All right reserved. ©2011 Flomatic Corporation. The drawings & information on this drawing sheet are the sole & exclusive property of Flomatic Corporation. Any reproduction, distribution, display or use of these drawings or information in whole or in part without written authorization of Flomatic Corporation is strictly prohibited.



February 2, 2001  
Dwg No: S4026 Rev: F (10/14)

FLOMATIC CORPORATION  
GLENS FALLS, N.Y. 12801  
PHONE (518) 761-9797  
FAX (518) 761-9798