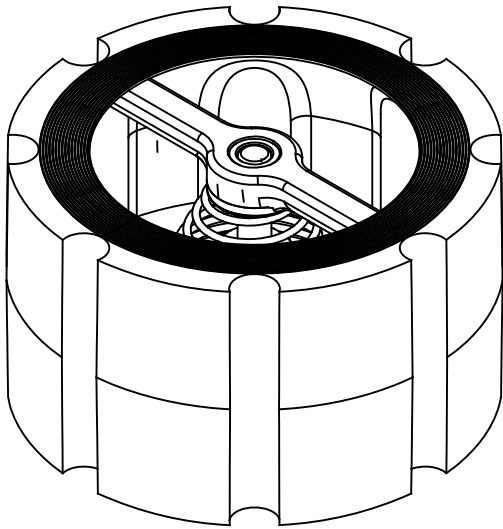
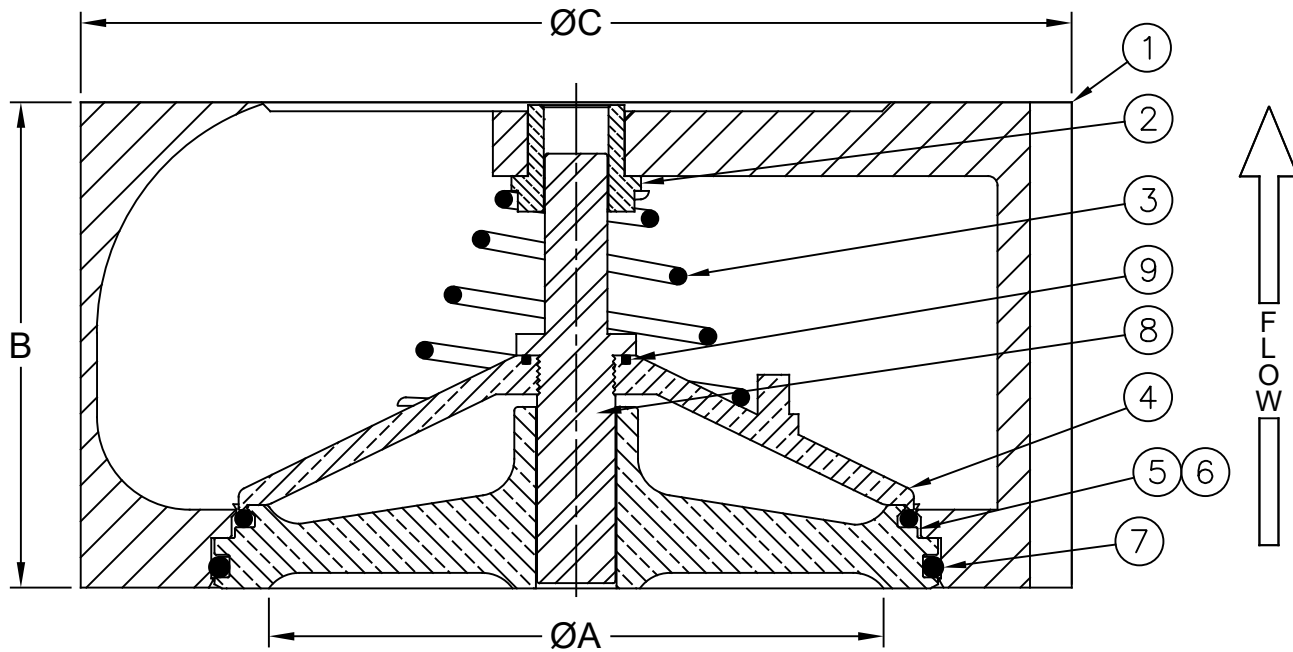


Materials (Ductile Iron Body)

LEAD FREE
NSF/ANSI 61



Max Temp 200°F (93°C)
Max Inlet Pressure @ 150° F (65°C) 150# 300 psi (21bar)

Item #	Qty	Description	Material	ASTM
1	1	Body (Epoxy Coated)	Ductile Iron	A536 65-45-12
2	1	Bushing	Bronze	C95400
3	1	Spring	Stainless Steel	302
4	1	Poppet	Bronze	C87600
5	1	Seat Ring*	Bronze	C87600
6	1	O-Ring	EPDM	5778-70
7	1	O-Ring	EPDM	5778-70
8	1	Stem	Stainless Steel	316
9	1	O-Ring	EPDM	5778-70

*OPTIONAL METAL TO METAL SEAT AVAILABLE, REMOVE "R" FROM PART NUMBER

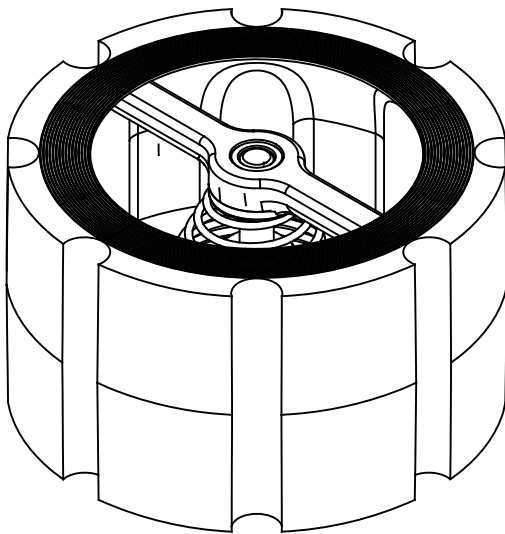
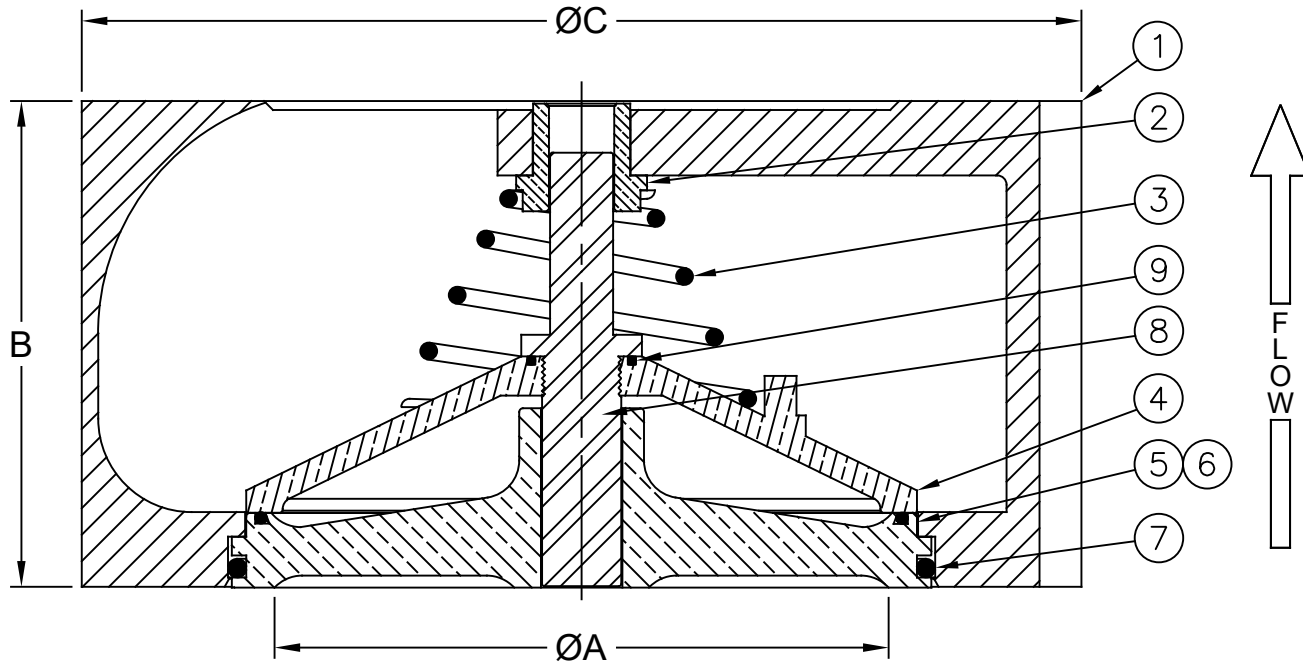
Dimensions

MSS SP-125 Compliant
PATENT # 6,024,121

Size		Part #	ØA		B		ØC		Weight		# of Bolts	Bolt Size
inch	mm		inch	mm	inch	mm	inch	mm	lbs	kg		
8	200	2438R	8-7/32	209	6-1/2	165	13-3/8	340	80	36	8	3/4 X 9

Flomatic Corporation can accept no responsibility for possible errors in catalogues, brochures and other printed material. Flomatic Corporation reserves the right to alter its products without notices. This also applies to product already agreed. All trademarks in this material are property of the respective companies. All rights reserved. ©2024 Flomatic Corporation. The drawings & information on this drawing sheet are the sole & exclusive property of Flomatic Corporation. Any reproduction, distribution, display or use of these drawings or information in whole or in part without written authorization of Flomatic Corporation is strictly prohibited. www.flomatic.com

Materials (Ductile Iron Body)



Max Temp 200°F (93°C)
Max Inlet Pressure @ 150° F (65°C) 150# 300 psi (21bar)

Item #	Qty	Description	Material	ASTM
1	1	Body (Epoxy Coated)	Ductile Iron	A536 65-45-12
2	1	Bushing	Bronze	C95400
3	1	Spring	Stainless Steel	302
4	1	Poppet	Bronze	C87600
5	1	Seat Ring*	Bronze	C87600
6	1	O-Ring	EPDM	5778-70
7	1	O-Ring	EPDM	5778-70
8	1	Stem	Stainless Steel	316
9	1	O-Ring	EPDM	5778-70

*OPTIONAL METAL TO METAL SEAT AVAILABLE, REMOVE "R" FROM PART NUMBER

Dimensions

MSS SP-125 Compliant
PATENT # 6,024,121

Size		Part #	ØA		B		ØC		Weight		# of Bolts		Bolt Size by Flange	
inch	mm		inch	mm	inch	mm	inch	mm	lbs	kg	150#	300#	150#	300#
10	250	2439R	10-7/64	257	8-1/4	210	16	406	129	59	12	N/A	7/8 X 12-1/2	N/A

Flomatic Corporation can accept no responsibility for possible errors in catalogues, brochures and other printed material. Flomatic Corporation reserves the right to alter its products without notices. This also applies to product already agreed. All trademarks in this material are property of the respective companies. All rights reserved. ©2024 Flomatic Corporation. The drawings & information on this drawing sheet are the sole & exclusive property of Flomatic Corporation. Any reproduction, distribution, display or use of these drawings or information in whole or in part without written authorization of Flomatic Corporation is strictly prohibited. www.flomatic.com