

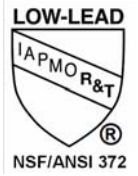
Split Disc® Check

Model 895

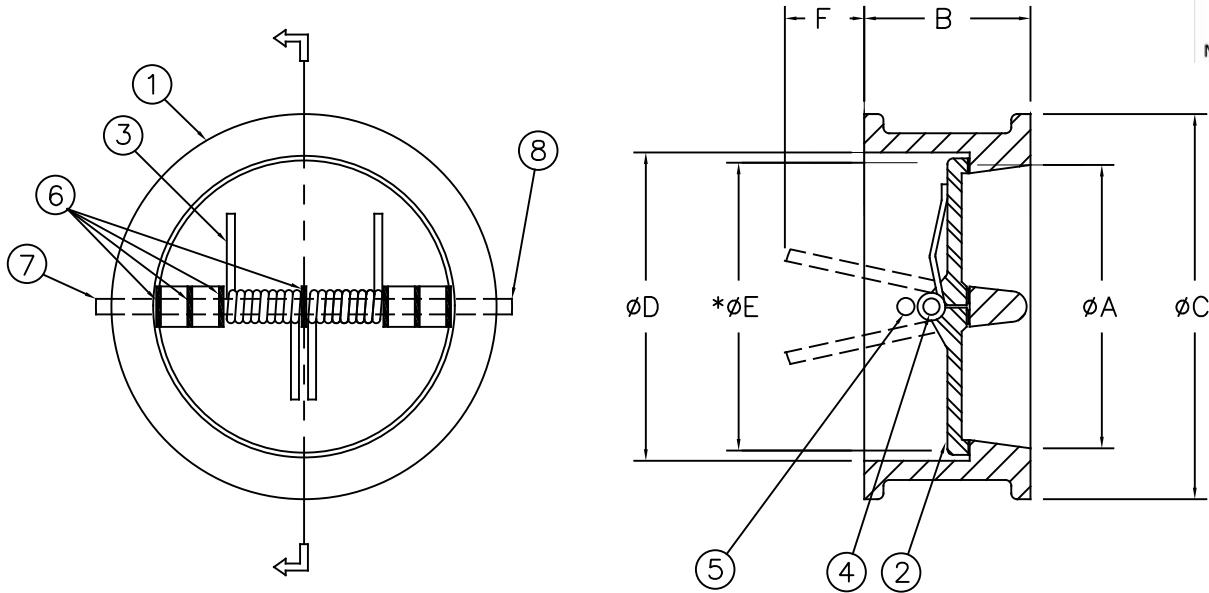


Flomatic Corporation

Sizes 2" Thru 12" / 50 mm & 300 mm



Materials



Max Temp 180°F (80°C)
Max Inlet Pressure 200 psi (14bar)

Item #	Qty	Description	Material	ASTM
1	1	Body (Epoxy Coated) / Seal Molded to Body	Cast Iron / EPDM	A 48
2	1	Disc (2 halves)	Stainless Steel	304
3	2	Torsion Spring	Stainless Steel	316
4	1	Disc Hinge Pin	Stainless Steel	316
5	1	Disc Stop Pin	Stainless Steel	316
6	7	Disc Bearing	PTFE	-----
7	2	Hinge Pin Retainer	Steel	-----
8	2	Stop Pin Retainer	Steel	-----

Dimensions

*MIN COMPANION FLANGE BORE

Size (ØA)		Part #	B		ØC		ØD		ØE		F		Weight	
inch	mm		inch	mm	inch	mm	inch	mm	inch	mm	inch	mm	lbs	kg
2	50	3000	2-1/8	54	4-1/4	109	2-3/8	60	2-1/8	54	n/a	n/a	3	1.2
2-1/2	65	3001	2-1/8	54	5	129	2-7/8	73	2-1/2	64	5/64	2	4	1.8
3	80	3002	2-1/4	57	5-11/16	144	3-1/2	89	3-9/64	80	1/2	13	7	2.9
4	100	3003	2-1/2	64	6-1/2	164	4-1/2	114	3-3/32	104	55/64	22	9	3.9
5	125	3004	2-3/4	70	7-3/4	197	5-9/16	141	5-5/32	131	1-3/8	35	22	10
6	150	3005	3	76	8-11/16	220	6-5/8	168	6-3/16	157	1-27/32	47	18	8
8	200	3006	3-3/4	95	10-7/8	276	8-5/8	219	7-61/64	202	2-21/64	59	31	14
10	250	3007	4-1/4	108	13	330	10-3/4	273	10-5/32	258	3-5/64	78	49	22
12	300	3008	5-5/8	143	15	380	12-3/4	324	12-3/64	306	3-7/32	82	75	34

Flomatic Corporation can accept no responsibility for possible errors in catalogues, brochures and other printed material. Flomatic Corporation reserves the right to alter its products without notices. This also applies to product already agreed. All trademarks in this material are property of the respective companies. All rights reserved. ©2019 Flomatic Corporation. The drawings & information on this drawing sheet are the sole & exclusive property of Flomatic Corporation. Any reproduction, distribution, display or use of these drawings or information in whole or in part without written authorization of Flomatic Corporation is strictly prohibited. www.flomatic.com



January 10, 2000
Dwg No: S895 Rev: J (9/19)

FLOMATIC CORPORATION
GLENS FALLS, N.Y. 12801
PHONE (518) 761-9797
FAX (518) 761-9798