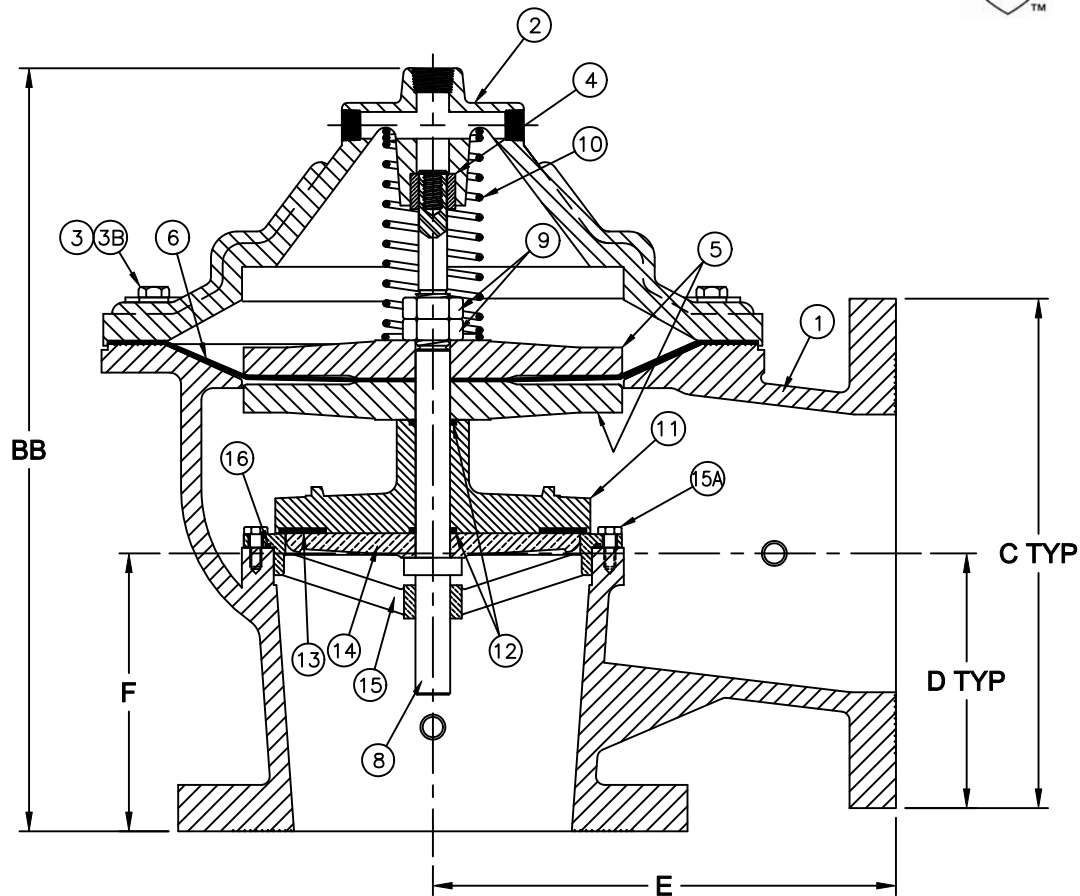


Materials (Angled Body)



Max Temp 180°F (82°C)
Max Pressure 250psi (18bar)

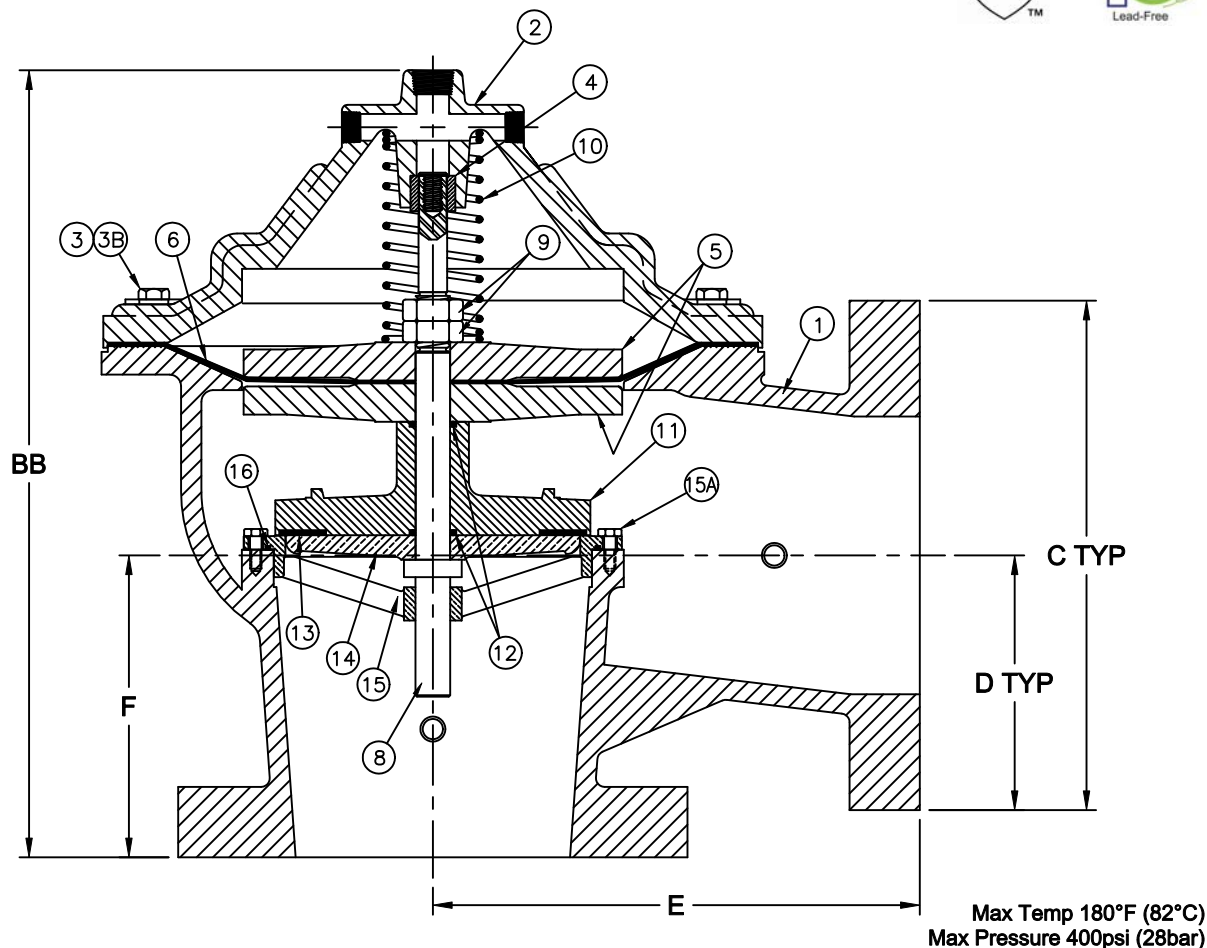
Item #	Qty	Description	Material	ASTM	Item #	Qty	Description	Material	ASTM
1	1	Body (W/ Tag & Plug)	Ductile Iron	A-536	10	1	Spring	Stainless Steel	302
2	1	Cover	Ductile Iron	A-536	11	1	Spool*	Ductile Iron*	A-536
3	12	Cover Bolt	Stainless Steel	18-8	12	1	Spool O'Ring (Stem O'Ring)**	Buna-n**	——
3B	12	Cover Washer	Stainless Steel	18-8	13	1	Spool Seal (Seat Seal)**	Buna-n**	——
4	1	Cover Bushing*	Bronze*	B140-83	14	1	Seat Plate*	Unleaded Bronze*	C89833
5	2	Diaphragm Plate*	Ductile Iron*	A-536	15	1	Seat Ring*	Unleaded Bronze*	C89833
6	1	Diaphragm	Nitrile/Nylon	——	15A	6	Seat Ring Cap Screws	Stainless Steel	18-8
8	1	Stem	Stainless Steel	304	16	1	Seat O'Ring**	Buna-n**	——
9	2	Jam Nut	Stainless Steel	18-8	*OPTIONAL 316 STAINLESS STEEL AVAILABLE				
					**OPTIONAL VITON AVAILABLE				

Dimensions

Size		Part #	BB		ØC		D		E		F		Weight	
inch	mm		inch	mm	inch	mm	inch	mm	inch	mm	inch	mm	lbs	kg
6	150	8475209	16-1/2	419	11	279	5-1/2	140	10	254	6	152	250	114

Flomatic Corporation can accept no responsibility for possible errors in catalogues, brochures and other printed material. Flomatic Corporation reserves the right to alter its products without notices. This also applies to product already agreed. All trademarks in this material are property of the respective companies. All right reserved. ©2011 Flomatic Corporation. The drawings & information on this drawing sheet are the sole & exclusive property of Flomatic Corporation. Any reproduction, distribution, display or use of these drawings or information in whole or in part without written authorization of Flomatic Corporation is strictly prohibited.

Materials (Angled Body)



Max Temp 180°F (82°C)
Max Pressure 400psi (28bar)

Item #	Qty	Description	Material	ASTM	Item #	Qty	Description	Material	ASTM
1	1	Body (W/ Tag & Plug)	Ductile Iron	A-536	10	1	Spring	Stainless Steel	302
2	1	Cover	Ductile Iron	A-536	11	1	Spool*	Ductile Iron*	A-536
3	12	Cover Bolt	Stainless Steel	18-8	12	1	Spool O'Ring (Stem O'Ring)**	Buna-n**	—
3B	12	Cover Washer	Stainless Steel	18-8	13	1	Spool Seal (Seat Seal)**	Buna-n**	—
4	1	Cover Bushing*	Bronze*	B140-83	14	1	Seat Plate*	Unleaded Bronze*	C89833
5	2	Diaphragm Plate*	Ductile Iron*	A-536	15	1	Seat Ring*	Unleaded Bronze*	C89833
6	1	Diaphragm	Nitrile/Nylon	—	15A	6	Seat Ring Cap Screws	Stainless Steel	18-8
8	1	Stem	Stainless Steel	304	16	1	Seat O'Ring**	Buna-n**	—
9	2	Jam Nut	Stainless Steel	18-8	*OPTIONAL 316 STAINLESS STEEL AVAILABLE				
					**OPTIONAL VITON AVAILABLE				

Dimensions

Size		Part #	BB		ØC		D		E		F		Weight	
inch	mm		inch	mm	inch	mm	inch	mm	inch	mm	inch	mm	lbs	kg
6	150	8475309	17	432	12-1/2	318	6-1/4	159	10-1/2	267	6-1/2	165	282	128

Flomatic Corporation can accept no responsibility for possible errors in catalogues, brochures and other printed material. Flomatic Corporation reserves the right to alter its products without notices. This also applies to product already agreed. All trademarks in this material are property of the respective companies. All right reserved. ©2011 Flomatic Corporation. The drawings & information on this drawing sheet are the sole & exclusive property of Flomatic Corporation. Any reproduction, distribution, display or use of these drawings or information in whole or in part without written authorization of Flomatic Corporation is strictly prohibited.

Control Valve

150# Flange

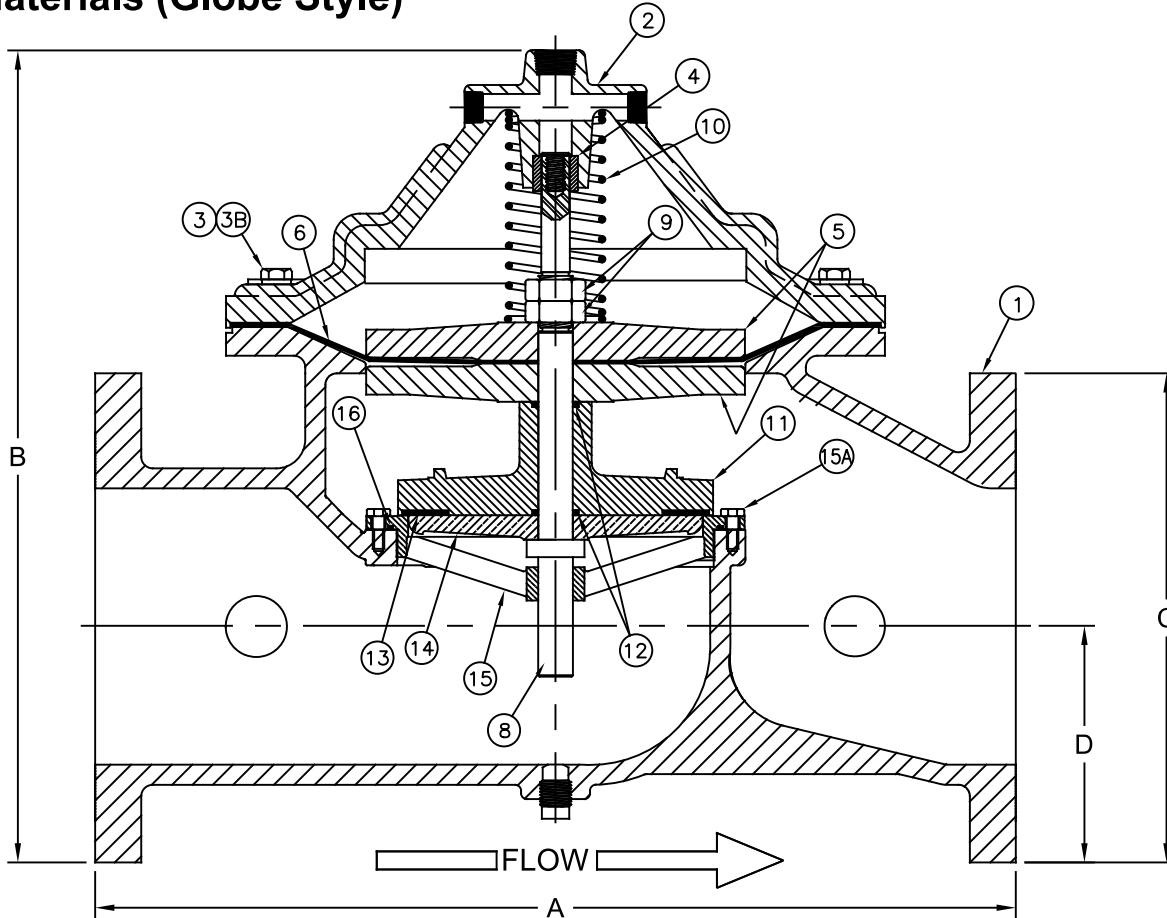
Model C



Flomatic Corporation

Sizes 5" & 6" / 125 mm & 150 mm
AIS

Materials (Globe Style)



Max Temp 180°F (82°C)
Max Pressure 250psi (18bar)

Item #	Qty	Description	Material	ASTM	Item #	Qty	Description	Material	ASTM
1	1	Body (W/ Tag & Plug)	Ductile Iron	A-536	10	1	Spring	Stainless Steel	302
2	1	Cover	Ductile Iron	A-536	11	1	Spool	Ductile Iron	A-536
3	12	Cover Bolt	Stainless Steel	18-8	12	1	Spool O'Ring (Stem O'Ring)**	Buna-n**	-----
3B	12	Cover Washer	Stainless Steel	18-8	13	1	Spool Seal (Seat Seal)**	Buna-n**	-----
4	1	Cover Bushing*	Bronze*	B140-83	14	1	Seat Plate*	Unleaded Bronze*	C89833
5	2	Diaphragm Plate	Ductile Iron	A-536	15	1	Seat Ring*	Unleaded Bronze*	C89833
6	1	Diaphragm	Nitrile/Nylon	-----	15A	6	Seat Ring Cap Screws	Stainless Steel	18-8
8	1	Stem	Stainless Steel	304	16	1	Seat O'Ring**	Buna-n**	-----
9	2	Jam Nut	Stainless Steel	18-8	*OPTIONAL 316 STAINLESS STEEL AVAILABLE (VOIDS AIS)				
					**OPTIONAL EPDM OR VITON AVAILABLE				

Dimensions (150# ANSI B16.5 flanges)

Size		Part #	A		B		C		D		Weight	
inch	mm		inch	mm	inch	mm	inch	mm	inch	mm	lbs	kg
5	125	8471708	19-7/8	505	17-1/2	445	10	254	5	125	160	73.6
6	150	8471709	20	508	17-5/8	448	10-5/8	270	5-1/8	130	170	77.1

Flomatic Corporation can accept no responsibility for possible errors in catalogues, brochures and other printed material. Flomatic Corporation reserves the right to alter its products without notices. This also applies to product already agreed. All trademarks in this material are property of the respective companies. All rights reserved. ©2023 Flomatic Corporation. The drawings & information on this drawing sheet are the sole & exclusive property of Flomatic Corporation. Any reproduction, distribution, display or use of these drawings or information in whole or in part without written authorization of Flomatic Corporation is strictly prohibited. www.flomatic.com



June 18, 2003
Dwg No:S6FP Rev D (1/23)

FLOMATIC CORPORATION
GLENS FALLS, N.Y. 12801
PHONE (518) 761-9797
FAX (518) 761-9798

Control Valve

300# Flange

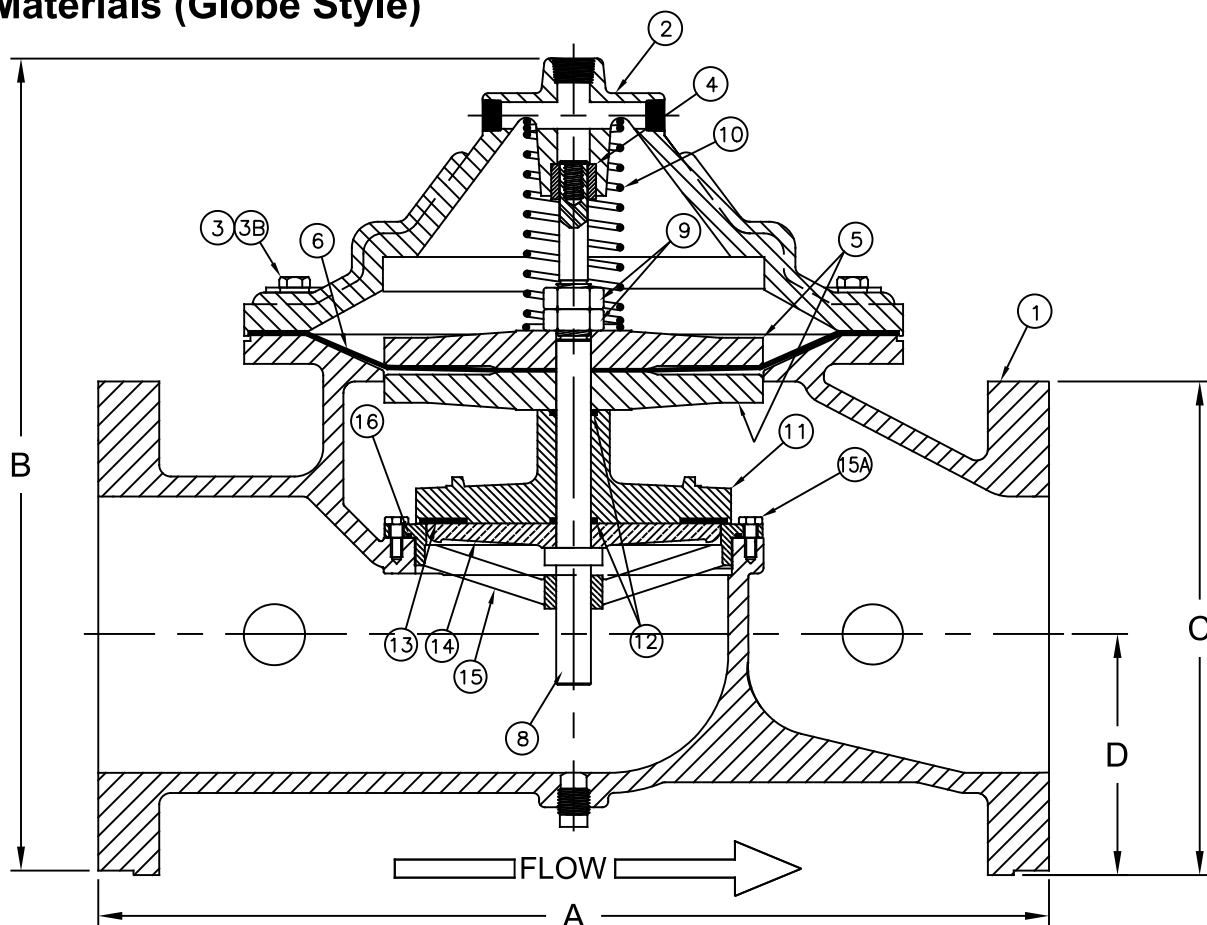
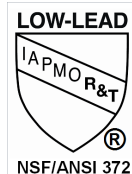
Model C



Flomatic Corporation

Sizes 5" & 6" / 125 mm & 150 mm
AIS

Materials (Globe Style)



Max Temp 180°F (82°C)
Max Pressure 400psi (28bar)

Item #	Qty	Description	Material	ASTM	Item #	Qty	Description	Material	ASTM
1	1	Body (W/ Tag & Plug)	Ductile Iron	A-536	10	1	Spring	Stainless Steel	302
2	1	Cover	Ductile Iron	A-536	11	1	Spool	Ductile Iron	A-536
3	12	Cover Bolt	Stainless Steel	18-8	12	2	Spool O'Ring (Stem O'Ring)**	Buna-n**	-----
3B	12	Cover Washer	Stainless Steel	18-8	13	1	Spool Seal (Seat Seal)**	Buna-n**	-----
4	1	Cover Bushing*	Bronze*	B140-83	14	1	Seat Plate*	Unleaded Bronze*	C89833
5	2	Diaphragm Plate	Ductile Iron	A-536	15	1	Seat Ring*	Unleaded Bronze*	C89833
6	1	Diaphragm	Nitrile/Nylon	-----	15A	6	Seat Ring Cap Screws	Stainless Steel	18-8
8	1	Stem	Stainless Steel	304	16	1	Seat O'Ring**	Buna-n**	-----
9	2	Jam Nut	Stainless Steel	18-8	*OPTIONAL 316 STAINLESS STEEL AVAILABLE (VOIDS AIS)				
					**OPTIONAL EPDM OR VITON AVAILABLE				

Dimensions (300# ANSI B16.5 flanges)

Size		Part #	A		B		C		D		Weight	
inch	mm		inch	mm	inch	mm	inch	mm	inch	mm	lbs	kg
5	125	8471808	20-7/8	530	19	483	12-3/4	324	6-1/2	165	205	93
6	150	8471809	21	533	19	483	12-3/4	324	6-1/2	165	205	93

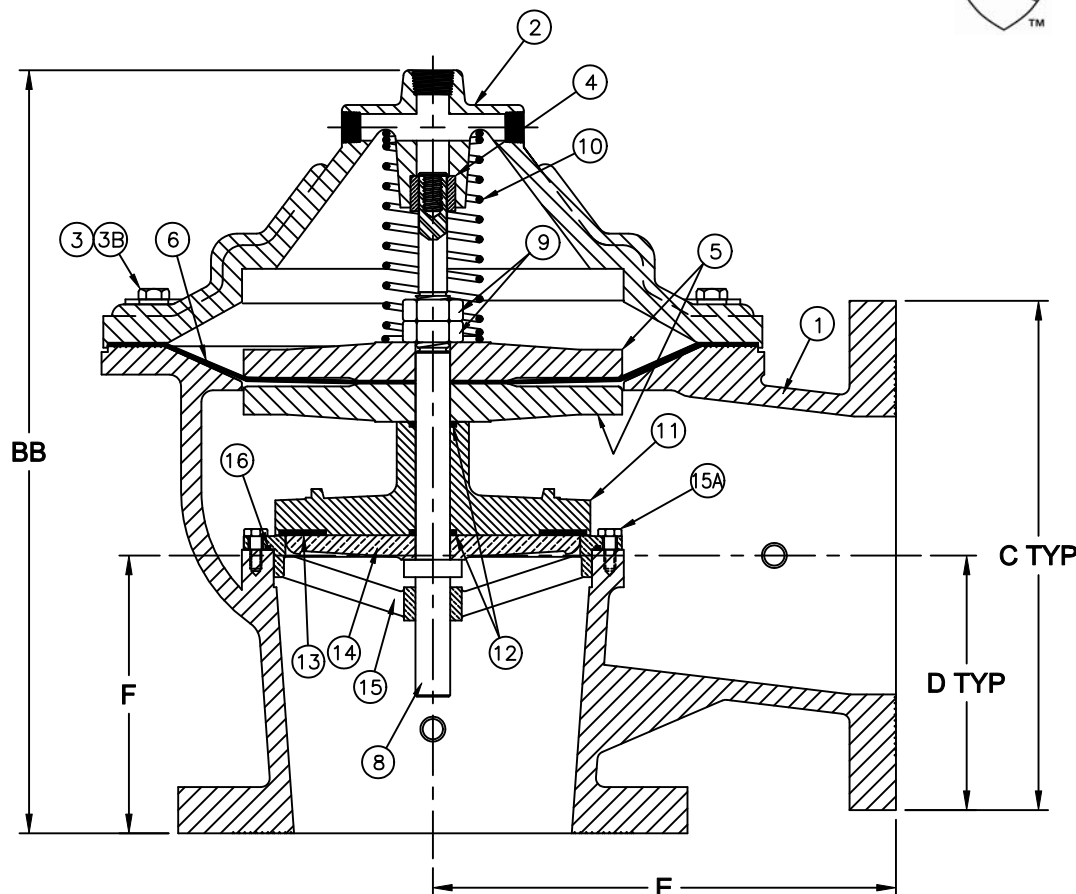
Flomatic Corporation can accept no responsibility for possible errors in catalogues, brochures and other printed material. Flomatic Corporation reserves the right to alter its products without notices. This also applies to product already agreed. All trademarks in this material are property of the respective companies. All rights reserved. ©2023 Flomatic Corporation. The drawings & information on this drawing sheet are the sole & exclusive property of Flomatic Corporation. Any reproduction, distribution, display or use of these drawings or information in whole or in part without written authorization of Flomatic Corporation is strictly prohibited. www.flomatic.com



June 18, 2003
Dwg No:S6FP250 Rev D (1/23)

FLOMATIC CORPORATION
GLENS FALLS, N.Y. 12801
PHONE (518) 761-9797
FAX (518) 761-9798

Materials (Angled Body)



Max Temp 180°F (82°C)
Max Pressure 250psi (18bar)

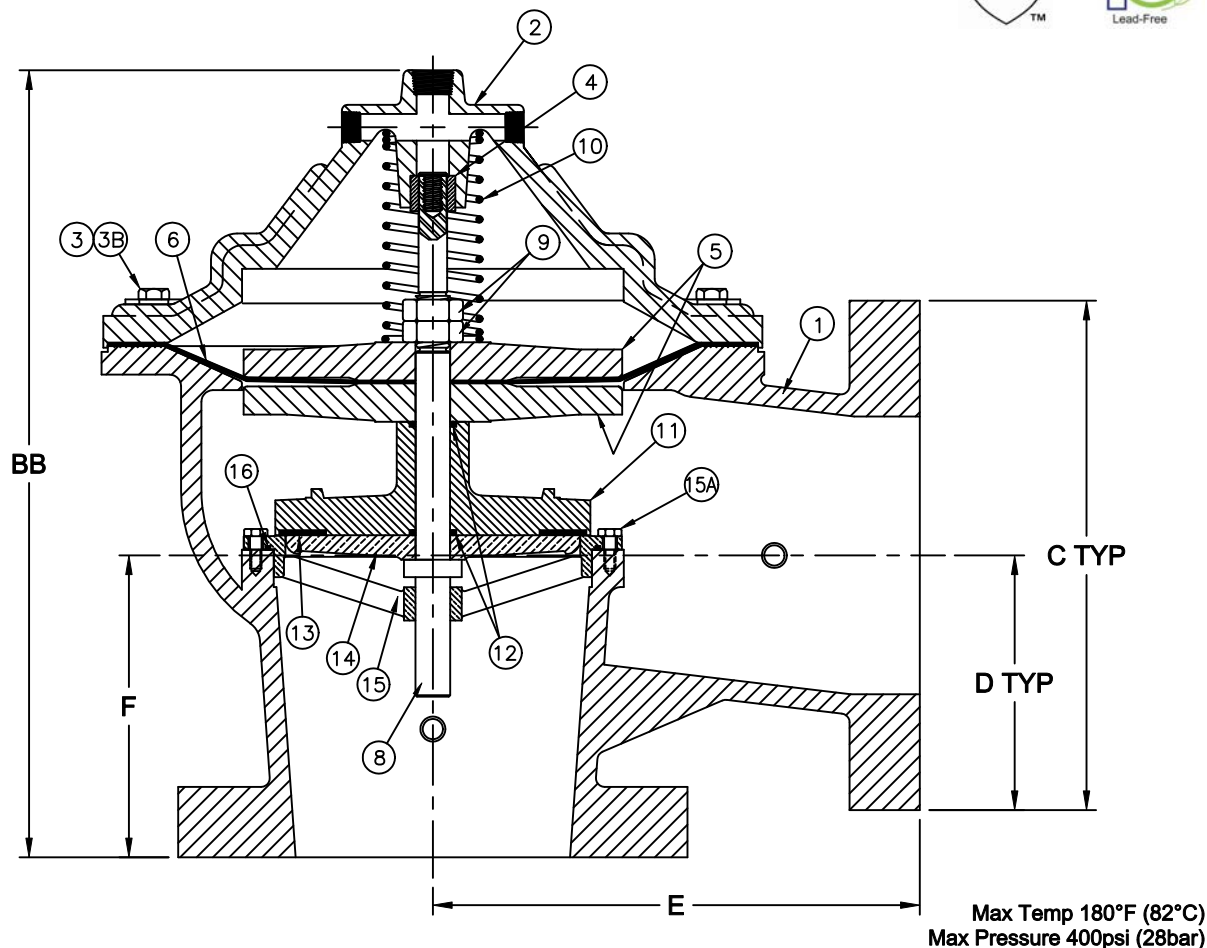
Item #	Qty	Description	Material	ASTM	Item #	Qty	Description	Material	ASTM
1	1	Body (W/ Tag & Plug)	Ductile Iron	A-536	10	1	Spring	Stainless Steel	302
2	1	Cover	Ductile Iron	A-536	11	1	Spool*	Ductile Iron*	A-536
3	12	Cover Bolt	Stainless Steel	18-8	12	1	Spool O'Ring (Stem O'Ring)**	Buna-n**	——
3B	12	Cover Washer	Stainless Steel	18-8	13	1	Spool Seal (Seat Seal)**	Buna-n**	——
4	1	Cover Bushing*	Bronze*	B140-83	14	1	Seat Plate*	Unleaded Bronze*	C89833
5	2	Diaphragm Plate*	Ductile Iron*	A-536	15	1	Seat Ring*	Unleaded Bronze*	C89833
6	1	Diaphragm	Nitrile/Nylon	——	15A	6	Seat Ring Cap Screws	Stainless Steel	18-8
8	1	Stem	Stainless Steel	304	16	1	Seat O'Ring**	Buna-n**	——
9	2	Jam Nut	Stainless Steel	18-8	*OPTIONAL 316 STAINLESS STEEL AVAILABLE				
					**OPTIONAL VITON AVAILABLE				

Dimensions

Size		Part #	BB		ØC		D		E		F		Weight	
inch	mm		inch	mm	inch	mm	inch	mm	inch	mm	inch	mm	lbs	kg
8	200	8475210	22-5/32	563	13-1/2	343	6-3/4	171	12-3/4	324	8	203	326	148

Flomatic Corporation can accept no responsibility for possible errors in catalogues, brochures and other printed material. Flomatic Corporation reserves the right to alter its products without notices. This also applies to product already agreed. All trademarks in this material are property of the respective companies. All right reserved. ©2011 Flomatic Corporation. The drawings & information on this drawing sheet are the sole & exclusive property of Flomatic Corporation. Any reproduction, distribution, display or use of these drawings or information in whole or in part without written authorization of Flomatic Corporation is strictly prohibited.

Materials (Angled Body)



Item #	Qty	Description	Material	ASTM	Item #	Qty	Description	Material	ASTM
1	1	Body (W/ Tag & Plug)	Ductile Iron	A-536	10	1	Spring	Stainless Steel	302
2	1	Cover	Ductile Iron	A-536	11	1	Spool*	Ductile Iron*	A-536
3	12	Cover Bolt	Stainless Steel	18-8	12	1	Spool O'Ring (Stem O'Ring)**	Buna-n**	-----
3B	12	Cover Washer	Stainless Steel	18-8	13	1	Spool Seal (Seat Seal)**	Buna-n**	-----
4	1	Cover Bushing*	Bronze*	B140-83	14	1	Seat Plate*	Unleaded Bronze*	C89833
5	2	Diaphragm Plate*	Ductile Iron*	A-536	15	1	Seat Ring*	Unleaded Bronze*	C89833
6	1	Diaphragm	Nitrile/Nylon	-----	15A	6	Seat Ring Cap Screws	Stainless Steel	18-8
8	1	Stem	Stainless Steel	304	16	1	Seat O'Ring**	Buna-n**	-----
9	2	Jam Nut	Stainless Steel	18-8	*OPTIONAL 316 STAINLESS STEEL AVAILABLE				
					**OPTIONAL VITON AVAILABLE				

Dimensions

Size		Part #	BB		ØC		D		E		F		Weight	
inch	mm		inch	mm	inch	mm	inch	mm	inch	mm	inch	mm	lbs	kg
8	300	8475310	22-11/16	576	15	381	7-1/2	191	13-1/4	337	8-1/2	216	376	171

Flomatic Corporation can accept no responsibility for possible errors in catalogues, brochures and other printed material. Flomatic Corporation reserves the right to alter its products without notices. This also applies to product already agreed. All trademarks in this material are property of the respective companies. All right reserved. ©2011 Flomatic Corporation. The drawings & information on this drawing sheet are the sole & exclusive property of Flomatic Corporation. Any reproduction, distribution, display or use of these drawings or information in whole or in part without written authorization of Flomatic Corporation is strictly prohibited.

Control Valve

150# Flange

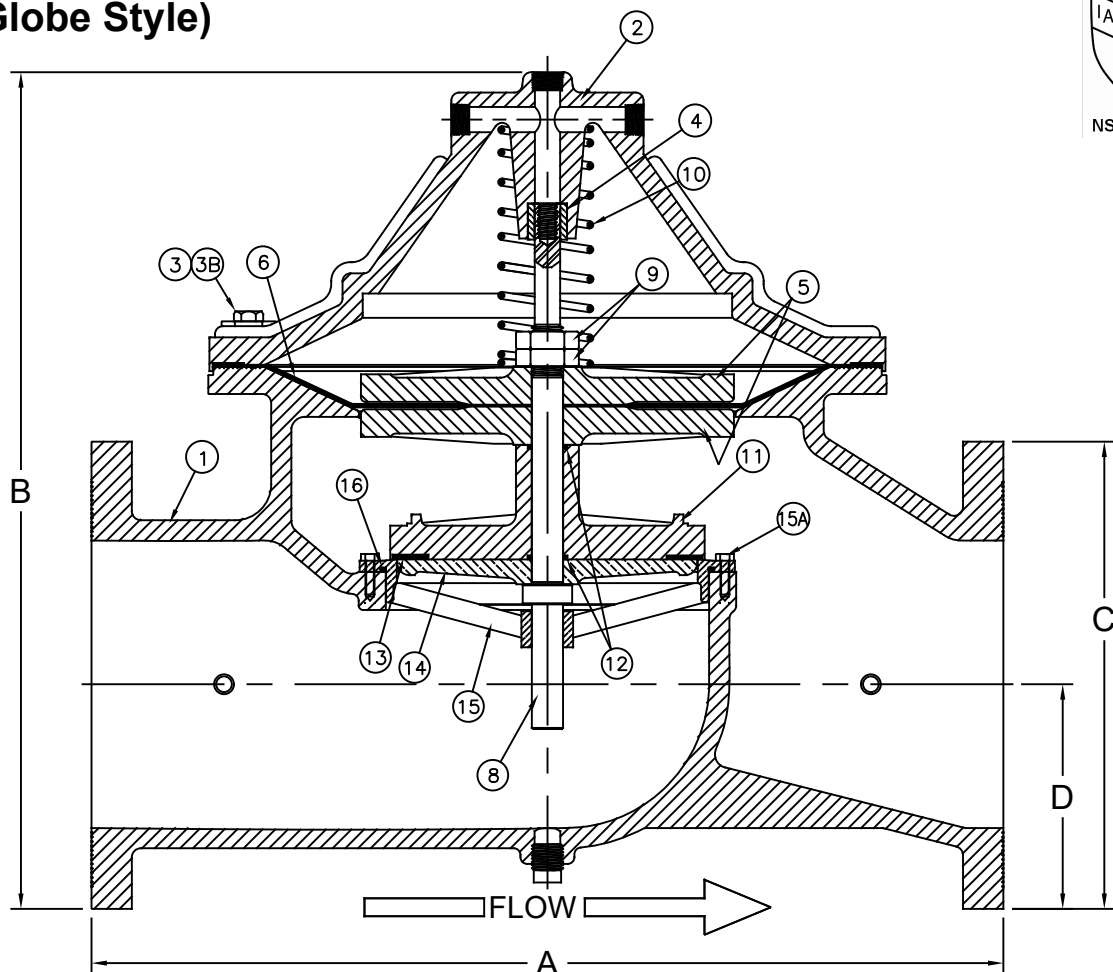
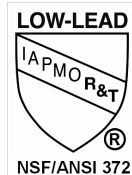
Model C

FLOMATIC®

Flomatic Corporation

Sizes 8" / 200 mm
AIS

Materials (Globe Style)

Max Temp 180°F (82°C)
Max Pressure 250psi (18bar)

Item #	Qty	Description	Material	ASTM	Item #	Qty	Description	Material	ASTM
1	1	Body (W/ Tag & Plug)	Ductile Iron	A-536	10	1	Spring	Stainless Steel	302
2	1	Cover	Ductile Iron	A-536	11	1	Spool*	Ductile Iron*	A-536
3	12	Cover Bolt	Stainless Steel	18-8	12	2	Spool O'Ring (Stem O'Ring)**	Buna-n**	-----
3B	12	Cover Washer	Stainless Steel	18-8	13	1	Spool Seal (Seat Seal)**	Buna-n**	-----
4	1	Cover Bushing*	Bronze*	B140-83	14	1	Seat Plate*	Unleaded Bronze*	C89833
5	2	Diaphragm Plate*	Ductile Iron*	A-536	15	1	Seat Ring*	Unleaded Bronze*	C89833
6	1	Diaphragm	Nitrile/Nylon	-----	15A	8	Seat Ring Cap Screws	Stainless Steel	18-8
8	1	Stem	Stainless Steel	304	16	1	Seat O'Ring**	Buna-n**	-----
9	2	Jam Nut	Stainless Steel	18-8	*OPTIONAL 316 STAINLESS STEEL AVAILABLE (VOIDS AIS)				
					**OPTIONAL EPDM OR VITON AVAILABLE				

Dimensions (150# ANSI B16.5 flanges)

Size		Part #	A		B		C		D		Weight	
inch	mm		inch	mm	inch	mm	inch	mm	inch	mm	lbs	kg
8	200	8471710	25-3/8	645	23-9/32	591	13	330	6-1/4	159	450	204

Flomatic Corporation can accept no responsibility for possible errors in catalogues, brochures and other printed material. Flomatic Corporation reserves the right to alter its products without notices. This also applies to product already agreed. All trademarks in this material are property of the respective companies. All rights reserved. ©2023 Flomatic Corporation. The drawings & information on this drawing sheet are the sole & exclusive property of Flomatic Corporation. Any reproduction, distribution, display or use of these drawings or information in whole or in part without written authorization of Flomatic Corporation is strictly prohibited. www.flomatic.com

FLOMATIC® VALVESJune 18, 2003
Dwg No:S8FP125 Rev E (2/23)FLOMATIC CORPORATION
GLENS FALLS, N.Y. 12801
PHONE (518) 761-9797
FAX (518) 761-9798

Control Valve

300# Flange

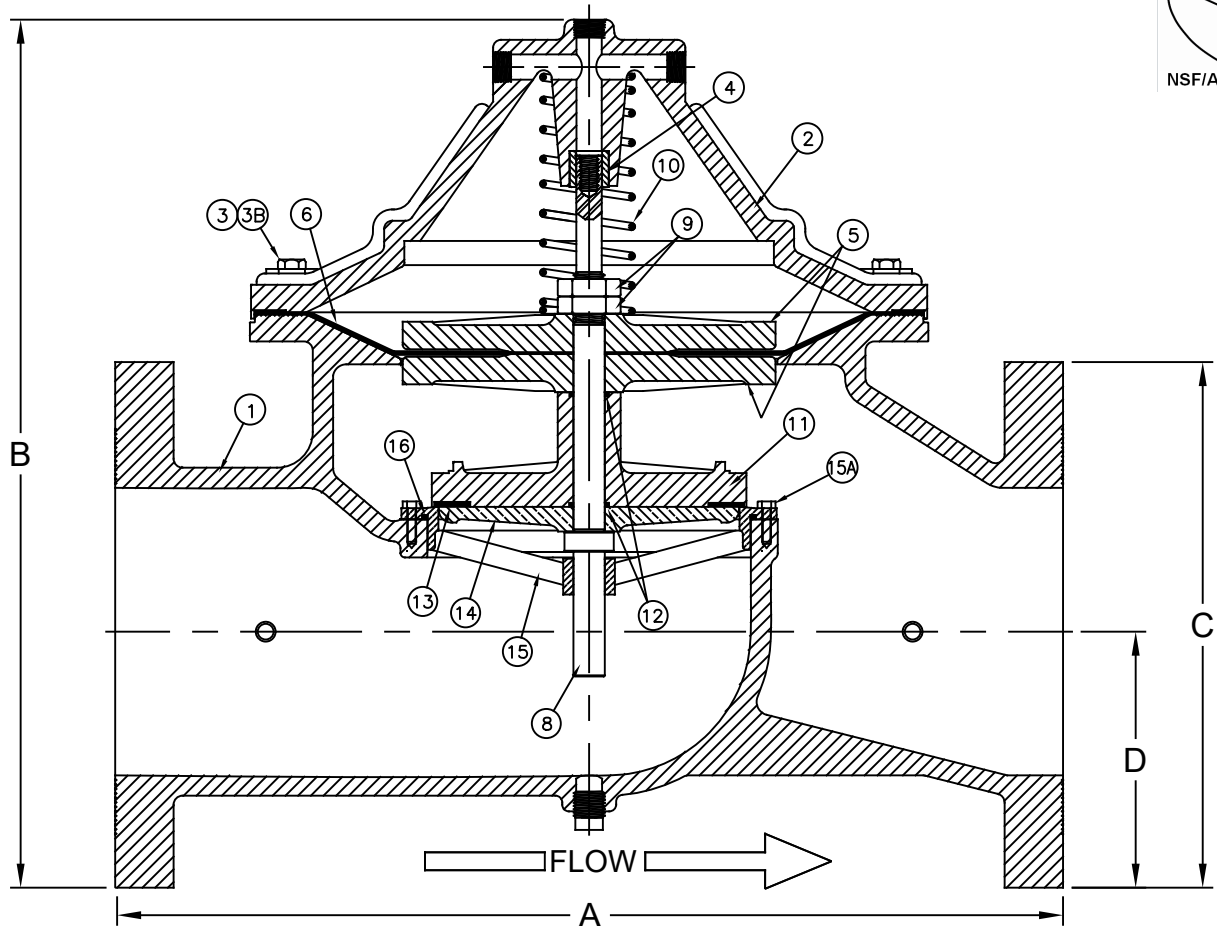
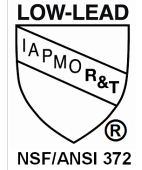
Model C



Flomatic Corporation

Sizes 8" / 200 mm
AIS

Materials (Globe Style)



Max Temp 180°F (82°C)
Max Pressure 400psi (28bar)

Item #	Qty	Description	Material	ASTM	Item #	Qty	Description	Material	ASTM
1	1	Body (W/ Tag & Plug)	Ductile Iron	A-536	10	1	Spring	Stainless Steel	302
2	1	Cover	Ductile Iron	A-536	11	1	Spool*	Ductile Iron*	A-536
3	12	Cover Bolt	Stainless Steel	18-8	12	2	Spool O'Ring (Stem O'Ring)**	Buna-n**	-----
3B	12	Cover Washer	Stainless Steel	18-8	13	1	Spool Seal (Seat Seal)**	Buna-n**	-----
4	1	Cover Bushing*	Bronze*	B140-83	14	1	Seat Plate*	Unleaded Bronze*	C89833
5	2	Diaphragm Plate*	Ductile Iron*	A-536	15	1	Seat Ring*	Unleaded Bronze*	C89833
6	1	Diaphragm	Nitrile/Nylon	-----	15A	8	Seat Ring Cap Screws	Stainless Steel	18-8
8	1	Stem	Stainless Steel	304	16	1	Seat O'Ring**	Buna-n**	-----
9	2	Jam Nut	Stainless Steel	18-8	*OPTIONAL 316 STAINLESS STEEL AVAILABLE (VOIDS AIS)				
					**OPTIONAL EPDM OR VITON AVAILABLE				

Dimensions (300# ANSI B16.5 flanges)

Size		Part #	A		B		C		D		Weight	
inch	mm		inch	mm	inch	mm	inch	mm	inch	mm	lbs	kg
8	200	8471810	26-3/8	670	24-5/32	614	14-5/8	371	7-1/8	181	500	227

Flomatic Corporation can accept no responsibility for possible errors in catalogues, brochures and other printed material. Flomatic Corporation reserves the right to alter its products without notices. This also applies to product already agreed. All trademarks in this material are property of the respective companies. All rights reserved. ©2023 Flomatic Corporation. The drawings & information on this drawing sheet are the sole & exclusive property of Flomatic Corporation. Any reproduction, distribution, display or use of these drawings or information in whole or in part without written authorization of Flomatic Corporation is strictly prohibited. www.flomatic.com



June 18, 2003
Dwg No:S8FP250 Rev E (2/23)

FLOMATIC CORPORATION
GLENS FALLS, N.Y. 12801
PHONE (518) 761-9797
FAX (518) 761-9798

Control Valve

150# Flange

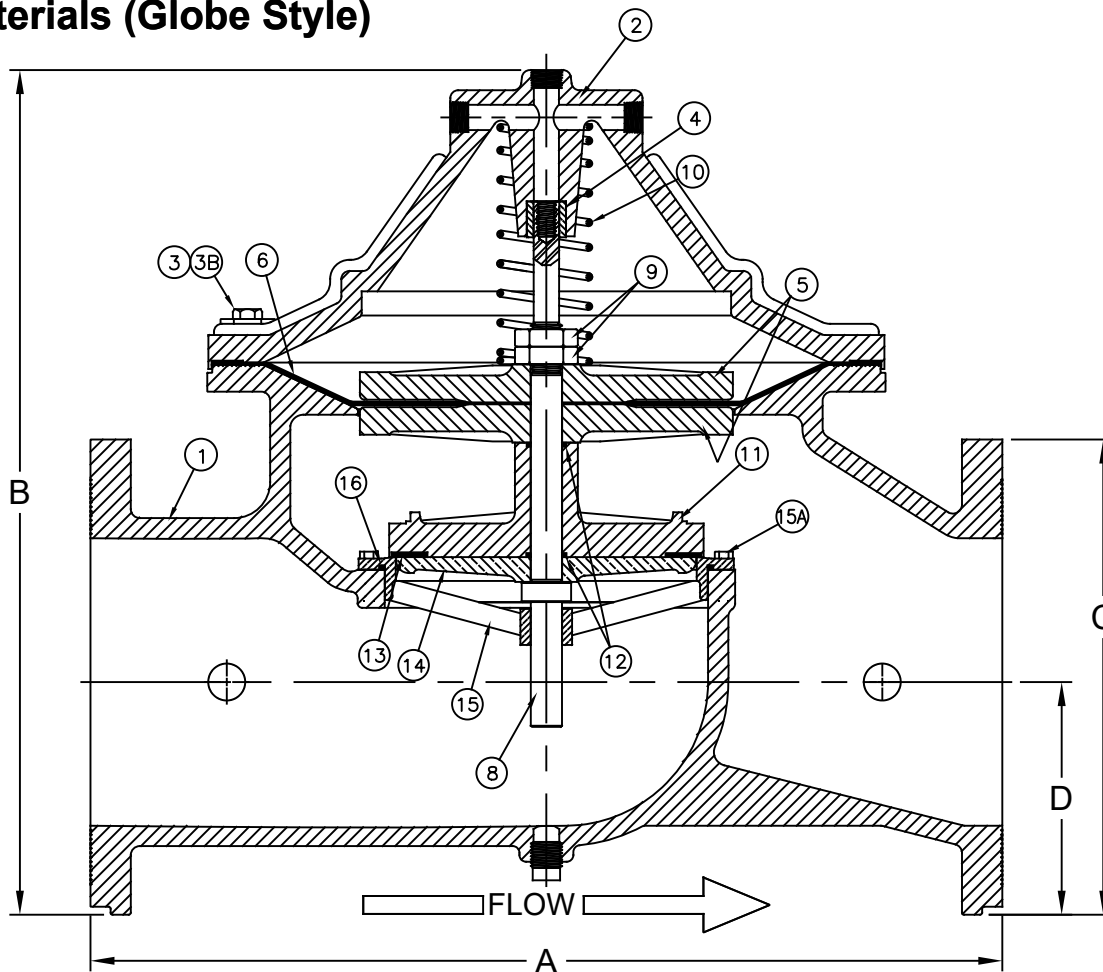
Model C



Flomatic Corporation

Sizes 10" / 250 mm
AIS

Materials (Globe Style)



Max Temp 180°F (82°C)
Max Pressure 250psi (18bar)

Item #	Qty	Description	Material	ASTM	Item #	Qty	Description	Material	ASTM
1	1	Body (W/ Tag & Plug)	Ductile Iron	A-536	10	1	Spring	Stainless Steel	302
2	1	Cover	Ductile Iron	A-536	11	1	Spool	Ductile Iron	A-536
3	12	Cover Bolt	Stainless Steel	18-8	12	2	Spool O'Ring (Stem O'Ring)**	Buna-n**	-----
3B	12	Cover Washer	Stainless Steel	18-8	13	1	Spool Seal (Seat Seal)**	Buna-n**	-----
4	1	Cover Bushing*	Bronze*	B140-83	14	1	Seat Plate*	Unleaded Bronze*	C89833
5	2	Diaphragm Plate*	Ductile Iron*	A-536	15	1	Seat Ring*	Unleaded Bronze*	C89833
6	1	Diaphragm	Nitrile/Nylon	-----	15A	8	Seat Ring Cap Screws	Stainless Steel	18-8
8	1	Stem	Stainless Steel	304	16	1	Seat O'Ring**	Buna-n**	-----
9	2	Jam Nut	Stainless Steel	18-8					

*OPTIONAL 316 STAINLESS STEEL AVAILABLE (VOIDS AIS)

**OPTIONAL EPDM OR VITON AVAILABLE

Dimensions (150# ANSI B16.5 flanges)

Size		Part #	A		B		C		D		Weight	
inch	mm		inch	mm	inch	mm	inch	mm	inch	mm	lbs	kg
10	250	8471711	29-3/4	756	29-9/32	744	16-1/4	412	8-1/4	210	569	258

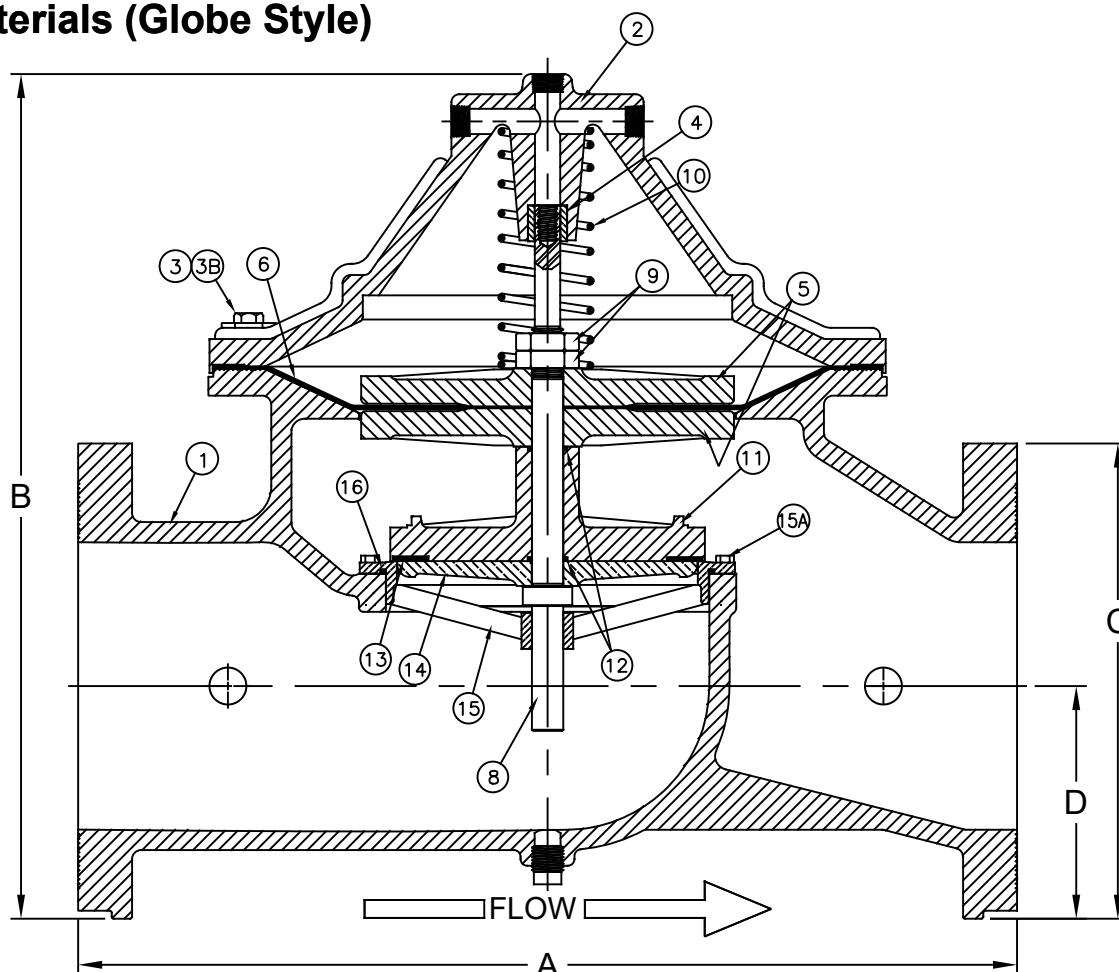
Flomatic Corporation can accept no responsibility for possible errors in catalogues, brochures and other printed material. Flomatic Corporation reserves the right to alter its products without notices. This also applies to product already agreed. All trademarks in this material are property of the respective companies. All rights reserved. ©2023 Flomatic Corporation. The drawings & information on this drawing sheet are the sole & exclusive property of Flomatic Corporation. Any reproduction, distribution, display or use of these drawings or information in whole or in part without written authorization of Flomatic Corporation is strictly prohibited. www.flomatic.com



June 18, 2003
Dwg No:S10FP125 Rev E (2/23)

FLOMATIC CORPORATION
GLENS FALLS, N.Y. 12801
PHONE (518) 761-9797
FAX (518) 761-9798

Materials (Globe Style)


 Max Temp 180°F (82°C)
 Max Pressure 250psi (18bar)

Item #	Qty	Description	Material	ASTM	Item #	Qty	Description	Material	ASTM
1	1	Body (W/ Tag & Plug)	Ductile Iron	A-536	10	1	Spring	Stainless Steel	302
2	1	Cover	Ductile Iron	A-536	11	1	Spool	Ductile Iron	A-536
3	12	Cover Bolt	Stainless Steel	18-8	12	2	Spool O'Ring (Stem O'Ring)**	Buna-n**	-----
3B	12	Cover Washer	Stainless Steel	18-8	13	1	Spool Seal (Seat Seal)**	Buna-n**	-----
4	1	Cover Bushing*	Bronze*	B140-83	14	1	Seat Plate*	Unleaded Bronze*	C89833
5	2	Diaphragm Plate*	Ductile Iron*	A-536	15	1	Seat Ring*	Unleaded Bronze*	C89833
6	1	Diaphragm	Nitrile/Nylon	-----	15A	8	Seat Ring Cap Screws	Stainless Steel	18-8
8	1	Stem	Stainless Steel	304	16	1	Seat O'Ring**	Buna-n**	-----
9	2	Jam Nut	Stainless Steel	18-8					

*OPTIONAL 316 STAINLESS STEEL AVAILABLE (VOIDS AIS)

**OPTIONAL EPDM OR VITON AVAILABLE

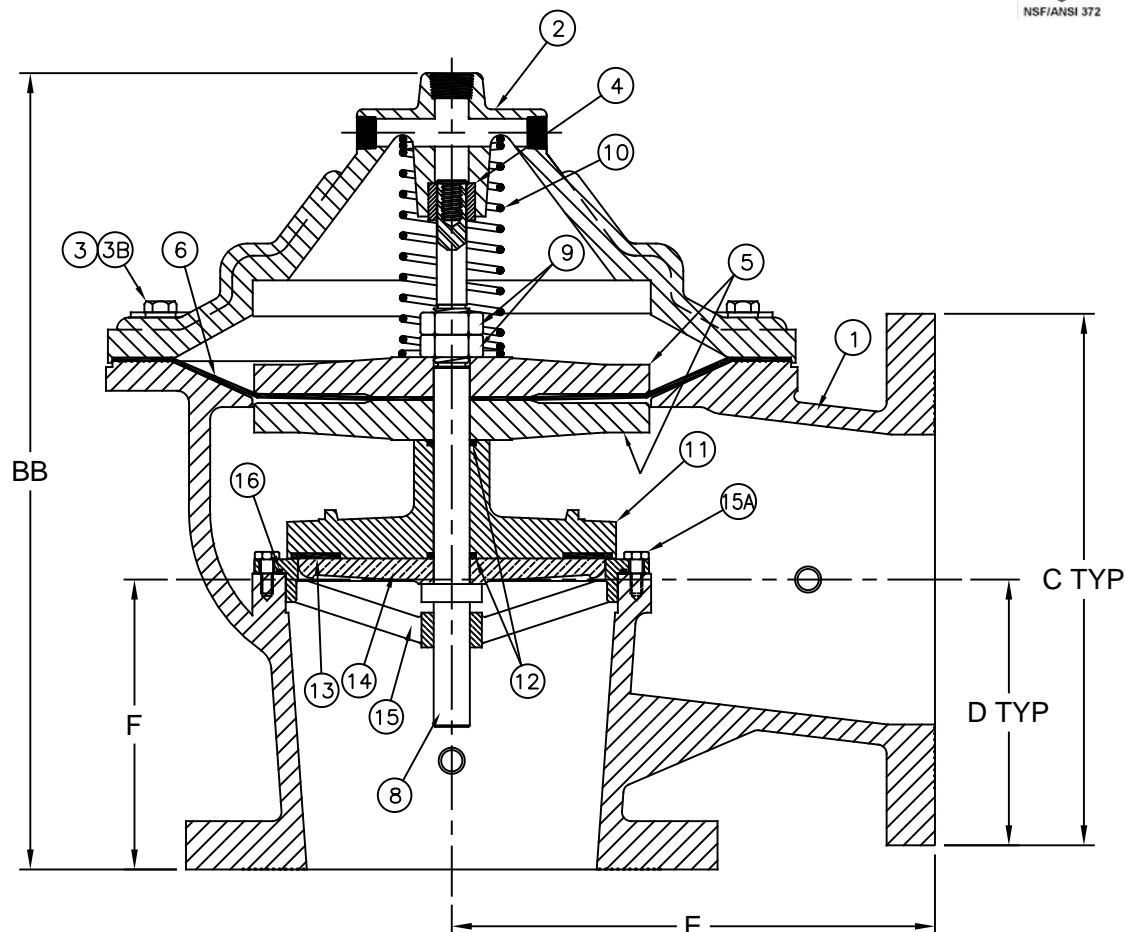
Dimensions (300# ANSI B16.5 flanges)

Size		Part #	A		B		C		D		Weight	
inch	mm		inch	mm	inch	mm	inch	mm	inch	mm	lbs	kg
10	250	8471811	31-1/8	791	30	762	17-3/4	451	9	229	647	294

Flomatic Corporation can accept no responsibility for possible errors in catalogues, brochures and other printed material. Flomatic Corporation reserves the right to alter its products without notices. This also applies to product already agreed. All trademarks in this material are property of the respective companies. All rights reserved. ©2023 Flomatic Corporation. The drawings & information on this drawing sheet are the sole & exclusive property of Flomatic Corporation. Any reproduction, distribution, display or use of these drawings or information in whole or in part without written authorization of Flomatic Corporation is strictly prohibited. www.flomatic.com



Materials (Angled Body)



Max Temp 180°F (82°C)
Max Pressure 400psi (28bar)

Item #	Qty	Description	Material	ASTM	Item #	Qty	Description	Material	ASTM
1	1	Body w/Tag & Plug (NSF61 epoxy)	Ductile Iron	A-536	10	1	Spring	Stainless Steel	302
2	1	Cover (NSF61 epoxy)	Ductile Iron	A-536	11	1	Spool* (NSF61 epoxy)	Ductile Iron*	A-536
3	12	Cover Bolt	Stainless Steel	18-8	12	1	Spool O'Ring (Stem O'Ring)**	Buna-N**	-----
3B	12	Cover Washer	Stainless Steel	18-8	13	1	Spool Seal (Seat Seal)**	Buna-N**	-----
4	1	Cover Bushing	Bronze	B140-83	14	1	Seat Plate*	Stainless Steel*	316
5	2	Diaphragm Plate* (NSF61 epoxy)	Ductile Iron*	A-536	15	1	Seat Ring*	Stainless Steel*	316
6	1	Diaphragm**	Buna-N/Nylon**	-----	15A	6	Seat Ring Cap Screws	Stainless Steel	18-8
8	1	Stem	Stainless Steel	304	16	1	Seat O'Ring**	Buna-N**	-----
9	2	Jam Nut	Stainless Steel	18-8					

Dimensions

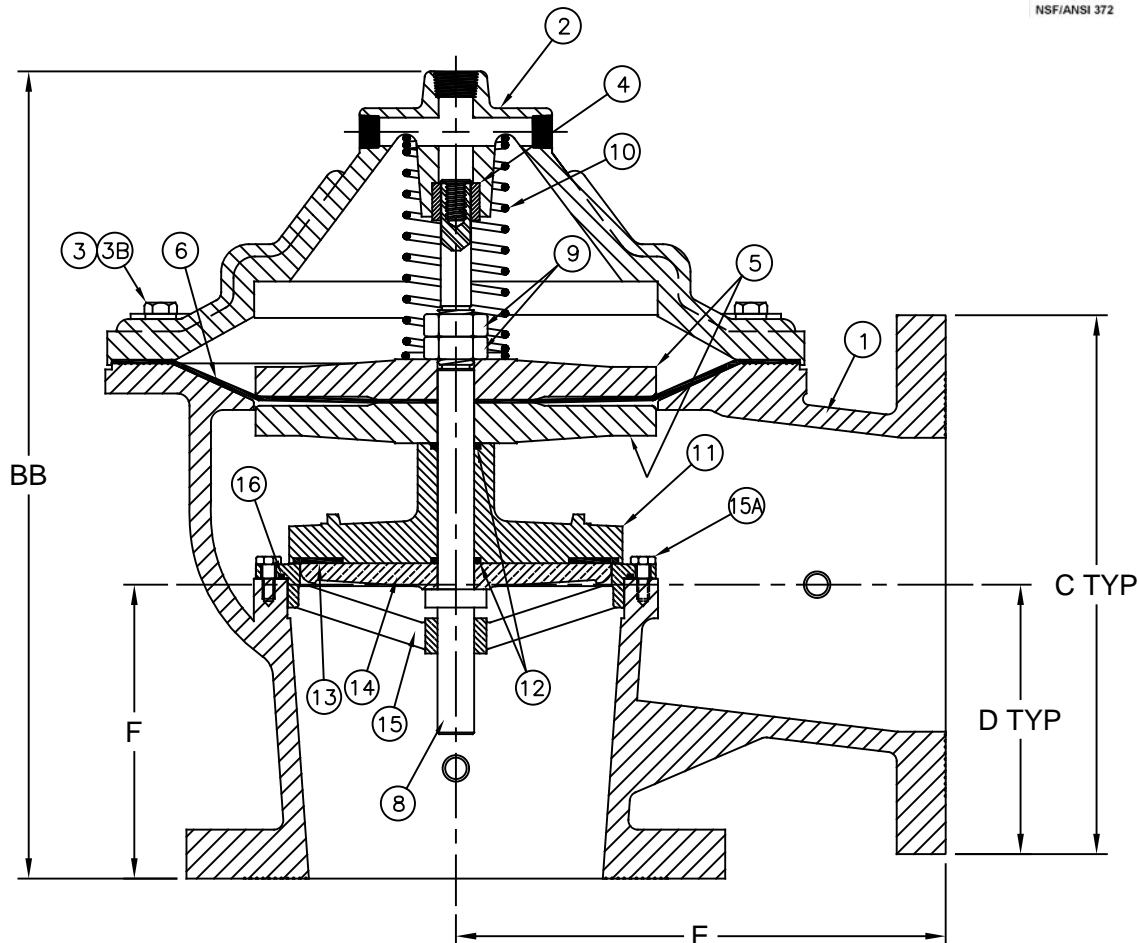
*OPTIONAL Bronze C89833 AVAILABLE
**OPTIONAL EPDM OR VITON AVAILABLE

Size		Part #	BB		ØC		D		E		F		Weight	
inch	mm		inch	mm	inch	mm	inch	mm	inch	mm	inch	mm	lbs	kg
12	300	8475212	32-5/8	830	19	483	9-1/2	242	17	432	13-3/4	350	1040	472

Flomatic Corporation can accept no responsibility for possible errors in catalogues, brochures and other printed material. Flomatic Corporation reserves the right to alter its products without notices. This also applies to product already agreed. All trademarks in this material are property of the respective companies. All right reserved. ©2016 Flomatic Corporation. The drawings & information on this drawing sheet are the sole & exclusive property of Flomatic Corporation. Any reproduction, distribution, display or use of these drawings or information in whole or in part without written authorization of Flomatic Corporation is strictly prohibited.



Materials (Angled Body)



Max Temp 180°F (82°C)
Max Pressure 400psi (28bar)

Item #	Qty	Description	Material	ASTM	Item #	Qty	Description	Material	ASTM
1	1	Body w/Tag & Plug (NSF61 epoxy)	Ductile Iron	A-536	10	1	Spring	Stainless Steel	302
2	1	Cover (NSF61 epoxy)	Ductile Iron	A-536	11	1	Spool* (NSF61 epoxy)	Ductile Iron*	A-536
3	12	Cover Bolt	Stainless Steel	18-8	12	1	Spool O'Ring (Stem O'Ring)**	Buna-N**	-----
3B	12	Cover Washer	Stainless Steel	18-8	13	1	Spool Seal (Seat Seal)**	Buna-N**	-----
4	1	Cover Bushing	Bronze	B140-83	14	1	Seat Plate*	Stainless Steel*	316
5	2	Diaphragm Plate* (NSF61 epoxy)	Ductile Iron*	A-536	15	1	Seat Ring*	Stainless Steel*	316
6	1	Diaphragm**	Buna-N/Nylon**	-----	15A	6	Seat Ring Cap Screws	Stainless Steel	18-8
8	1	Stem	Stainless Steel	304	16	1	Seat O'Ring**	Buna-N**	-----
9	2	Jam Nut	Stainless Steel	18-8					

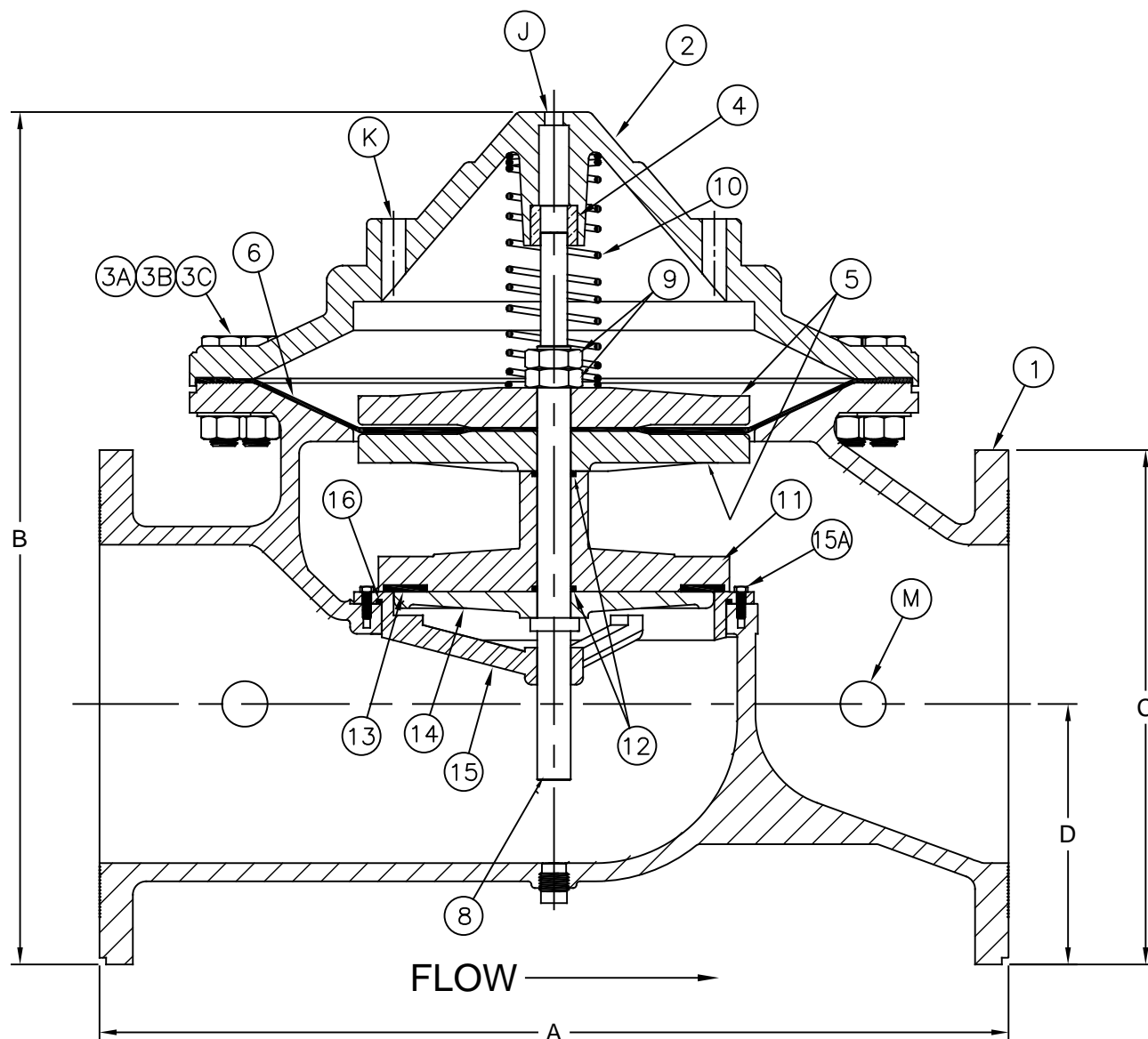
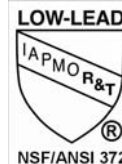
Dimensions

*OPTIONAL Bronze C89833 AVAILABLE
**OPTIONAL EPDM OR VITON AVAILABLE

Size		Part #	BB		ØC		D		E		F		Weight	
inch	mm		inch	mm	inch	mm	inch	mm	inch	mm	inch	mm	lbs	kg
12	300	8475312	33-3/8	848	20-1/2	521	10-1/4	260	17-3/4	451	14-1/2	368	1192	541

Flomatic Corporation can accept no responsibility for possible errors in catalogues, brochures and other printed material. Flomatic Corporation reserves the right to alter its products without notices. This also applies to product already agreed. All trademarks in this material are property of the respective companies. All right reserved. ©2016 Flomatic Corporation. The drawings & information on this drawing sheet are the sole & exclusive property of Flomatic Corporation. Any reproduction, distribution, display or use of these drawings or information in whole or in part without written authorization of Flomatic Corporation is strictly prohibited.

Materials (Globe Style)



Dimensions & Weight

Max Temp 180°F (82°C)
Max Pressure 250psi (18bar)

Flange Standard:
ASME/ANSI B16.42

Size		Part #	A		B		C		D		Weight	
inch	mm		inch	mm	inch	mm	inch	mm	inch	mm	lbs	kg
12	300	8471712	34	864	28-29/32	734	19-1/4	489	9-3/4	248	1040	472

Flomatic Corporation can accept no responsibility for possible errors in catalogues, brochures and other printed material. Flomatic Corporation reserves the right to alter its products without notices. This also applies to product already agreed. All trademarks in this material are property of the respective companies. All right reserved. ©2017 Flomatic Corporation. The drawings & information on this drawing sheet are the sole & exclusive property of Flomatic Corporation. Any reproduction, distribution, display or use of these drawings or information in whole or in part without written authorization of Flomatic Corporation is strictly prohibited.

Control Valve

150# Flange

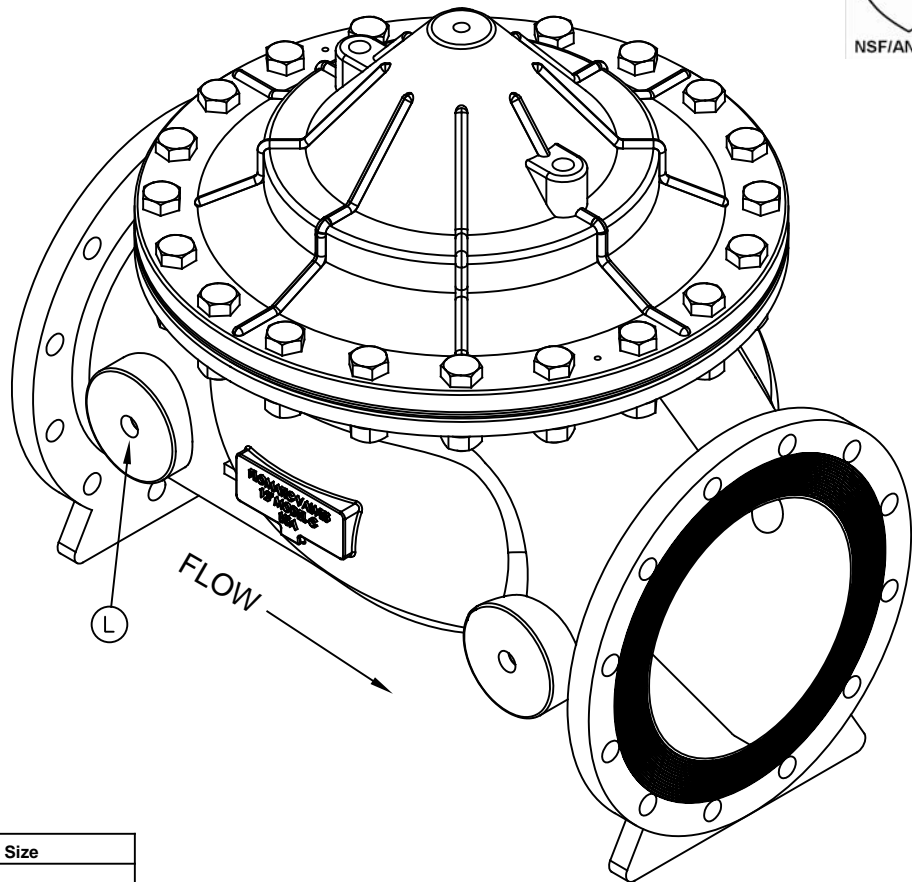
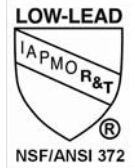
Model C



Flomatic Corporation

Sizes 12" / 300 mm

Materials (Globe Style)



Control Connections

Item	Qty	Description	Size
J	1	Cover Center Tapping	1/2" NPT
K	2	Cover Tapping	3/4" NPT
L	2	Body Tapping	1" NPT
M	2	Backside Flange Tapping	2" ASME/ANSI B16.42 300#

Items 18-22 Not Shown

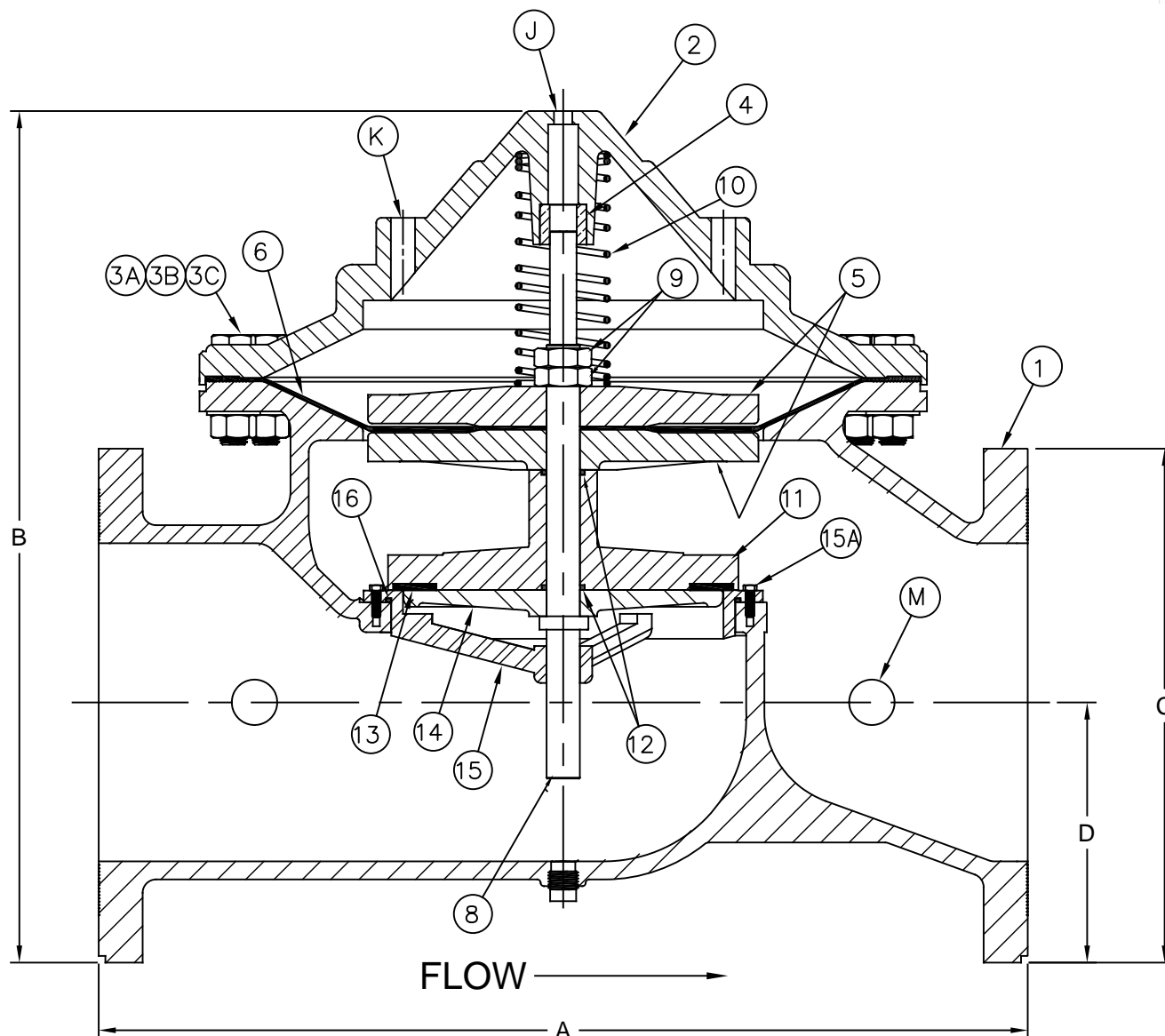
Item #	Qty	Description	Material	ASTM	Item #	Qty	Description	Material	ASTM
1	1	Body (NSF61 epoxy)	Ductile Iron	A536	12	1	Spool O'Ring (Stem O'Ring)	Buna-N**	-----
2	1	Cover (NSF61 epoxy)	Ductile Iron	A536	13	1	Spool Seal (Seat Seal)	Buna-N**	-----
3	20	Cover Bolt	Stainless Steel	304	14	1	Seat Plate	Stainless Steel	316
3B	20	Cover Washer	Stainless Steel	304	15	1	Seat Ring	Stainless Steel	316
3C	20	Cover Nut	Stainless Steel	304	15A	16	Seat Ring Cap Screws	Stainless Steel	304
4	1	Cover Bushing	Bronze	B140	16	1	Seat O'Ring**	Buna-N**	-----
5	2	Diaphragm Plate (NSF61 epoxy)	Ductile Iron	A536	17	1	Pipe Plug	Steel	-----
6	1	Diaphragm*	Buna/Nylon	-----	18	1	Serial Number Tag	Brass	-----
8	1	Stem	Stainless Steel	304	19	2	Grip Nails	Steel	-----
9	2	Jam Nut	Stainless Steel	304	20	2	Flange (2" 300#)	Ductile Iron	A536
10	1	Spring	Stainless Steel	302	21	2	Flange Gasket	Velumoid	-----
11	1	Spool (NSF61 epoxy)	Ductile Iron	A536	22	16	Flange Bolt	Stainless Steel	304

*OPTIONAL EPDM OR VITON AVAILABLE

Flomatic Corporation can accept no responsibility for possible errors in catalogues, brochures and other printed material. Flomatic Corporation reserves the right to alter its products without notices. This also applies to product already agreed. All trademarks in this material are property of the respective companies. All right reserved. ©2017 Flomatic Corporation. The drawings & information on this drawing sheet are the sole & exclusive property of Flomatic Corporation. Any reproduction, distribution, display or use of these drawings or information in whole or in part without written authorization of Flomatic Corporation is strictly prohibited.



Materials (Globe Style)



Dimensions & Weight

Max Temp 180°F (82°C)
Max Pressure 250psi (18bar)

Flange Standard:
ASME/ANSI B16.42

Size		Part #	A		B		C		D		Weight	
inch	mm		inch	mm	inch	mm	inch	mm	inch	mm	lbs	kg
12	300	8471812	35-1/2	902	29-21/32	753	20-3/4	527	10-1/2	267	1202	545

Flomatic Corporation can accept no responsibility for possible errors in catalogues, brochures and other printed material. Flomatic Corporation reserves the right to alter its products without notices. This also applies to product already agreed. All trademarks in this material are property of the respective companies. All right reserved. ©2018 Flomatic Corporation. The drawings & information on this drawing sheet are the sole & exclusive property of Flomatic Corporation. Any reproduction, distribution, display or use of these drawings or information in whole or in part without written authorization of Flomatic Corporation is strictly prohibited. www.flomatic.com

Control Valve

300# Flange

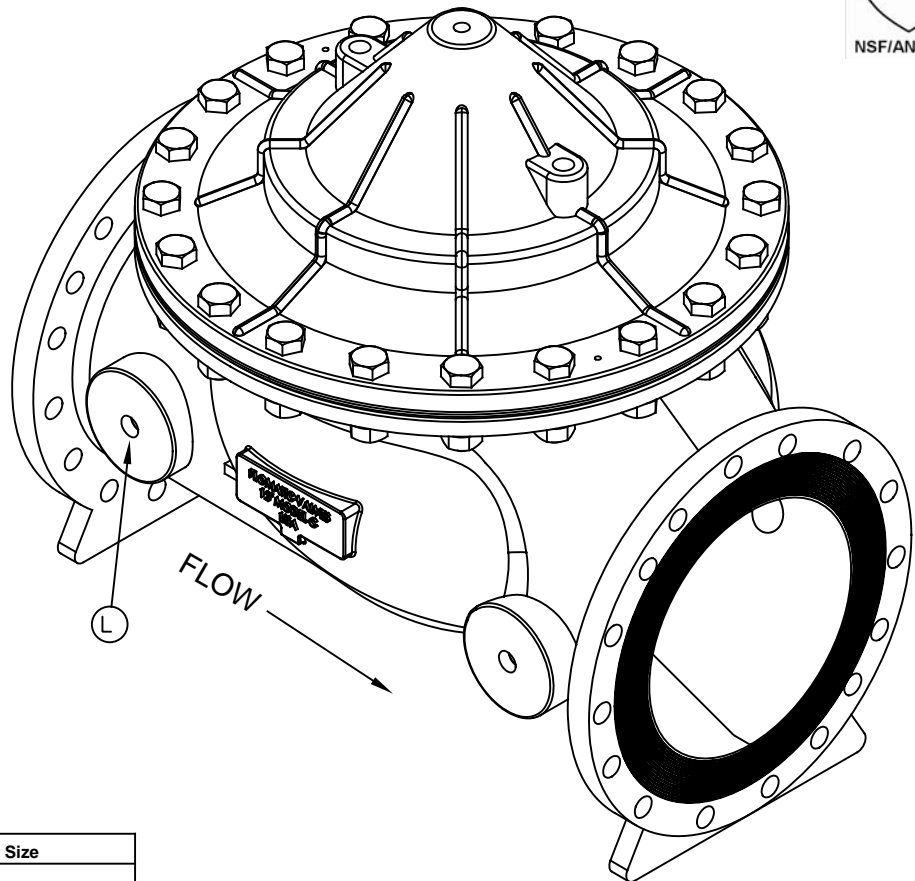
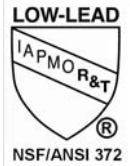
Model C

FLOMATIC®

Flomatic Corporation

Sizes 12" / 300 mm

Materials (Globe Style)



Control Connections

Item	Qty	Description	Size
J	1	Cover Center Tapping	1/2" NPT
K	2	Cover Tapping	3/4" NPT
L	2	Body Tapping	1" NPT
M	2	Backside Flange Tapping	2" ASME/ANSI B16.42 300#

Items 18-22 Not Shown

Item #	Qty	Description	Material	ASTM	Item #	Qty	Description	Material	ASTM
1	1	Body (NSF61 epoxy)	Ductile Iron	A536	12	1	Spool O'Ring (Stem O'Ring)	Buna-N**	-----
2	1	Cover (NSF61 epoxy)	Ductile Iron	A536	13	1	Spool Seal (Seat Seal)	Buna-N**	-----
3	20	Cover Bolt	Stainless Steel	304	14	1	Seat Plate	Stainless Steel	316
3B	20	Cover Washer	Stainless Steel	304	15	1	Seat Ring	Stainless Steel	316
3C	20	Cover Nut	Stainless Steel	304	15A	16	Seat Ring Cap Screws	Stainless Steel	304
4	1	Cover Bushing	Bronze	B140	16	1	Seat O'Ring**	Buna-N**	-----
5	2	Diaphragm Plate (NSF61 epoxy)	Ductile Iron	A536	17	1	Pipe Plug	Steel	-----
6	1	Diaphragm*	Buna/Nylon	-----	18	1	Serial Number Tag	Brass	-----
8	1	Stem	Stainless Steel	304	19	2	Grip Nails	Steel	-----
9	2	Jam Nut	Stainless Steel	304	20	2	Flange (2" 300#)	Ductile Iron	A536
10	1	Spring	Stainless Steel	302	21	2	Flange Gasket	Velumoid	-----
11	1	Spool (NSF61 epoxy)	Ductile Iron	A536	22	16	Flange Bolt	Stainless Steel	304

*OPTIONAL EPDM OR VITON AVAILABLE

Flomatic Corporation can accept no responsibility for possible errors in catalogues, brochures and other printed material. Flomatic Corporation reserves the right to alter its products without notices. This also applies to product already agreed. All trademarks in this material are property of the respective companies. All right reserved. ©2018 Flomatic Corporation. The drawings & information on this drawing sheet are the sole & exclusive property of Flomatic Corporation. Any reproduction, distribution, display or use of these drawings or information in whole or in part without written authorization of Flomatic Corporation is strictly prohibited.