

Swing Check Valve Position Indicator

Model 745PI

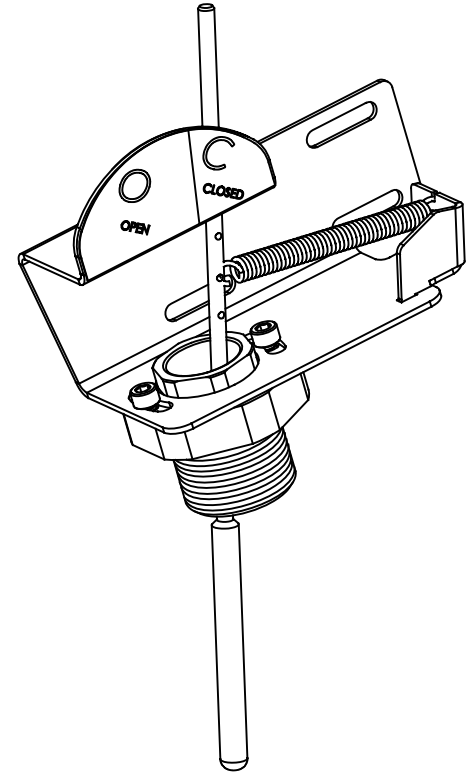
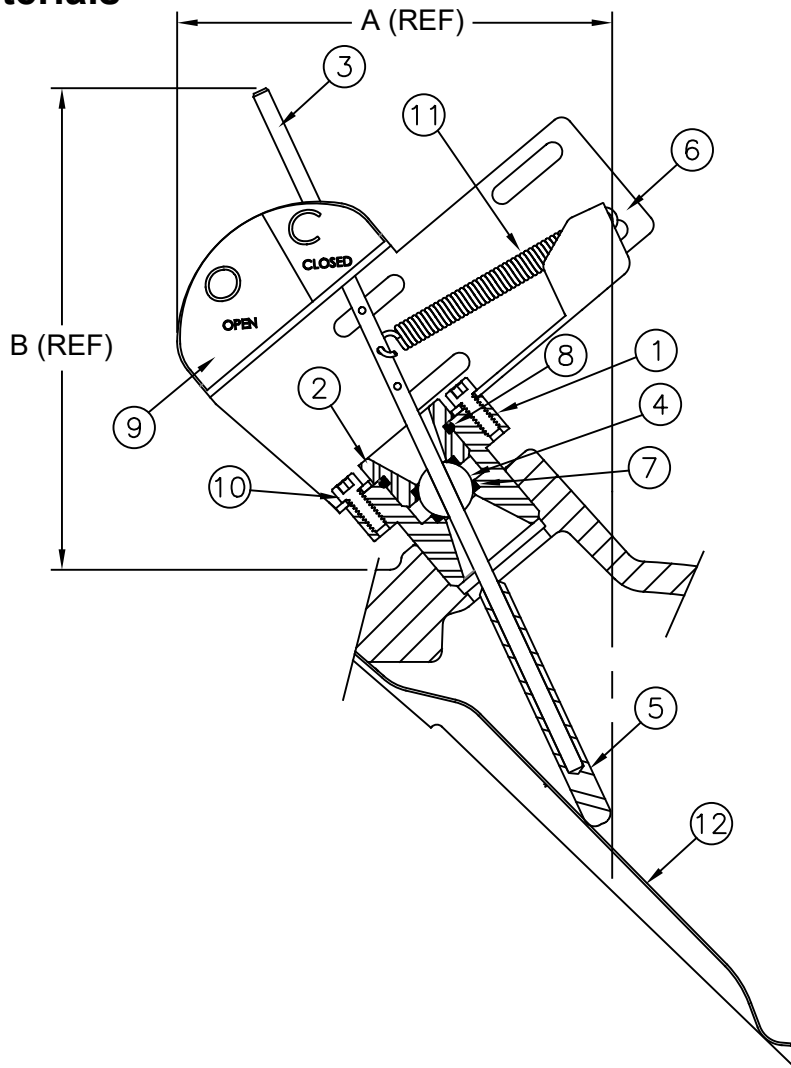


Flomatic Corporation

Sizes 3" Thru 6" / 80 mm Thru 150 mm
Available for use on the AIS valves only



Materials



Working Pressure: 250 psi / 17 Bar
For Valve Dimensions see 745 spec sheet

Item #	Qty	Description	Material	ASTM	Item #	Qty	Description	Material	ASTM
1	1	Indicator Nut	Stainless Steel	304	7	2	Seal	PTFE	-----
2	1	Lock Nut	Stainless Steel	304	8	1	O-Ring	Buna-n	-----
3	1	Indicator Rod	Stainless Steel	316	9	2	Decal	Vinyl	-----
4	1	Pivot Ball	Stainless Steel	316	10	2	SHCS	Stainless Steel	18-8
5	1	Rod End	Stainless Steel	316	11	1	Spring	Stainless Steel	302
6	1	Bracket	Stainless Steel	304	12	1	AC Spring	Stainless Steel	17-7 Ph

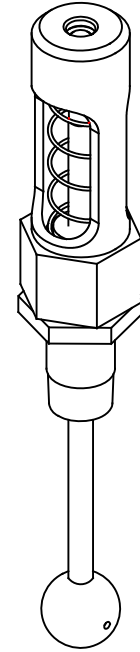
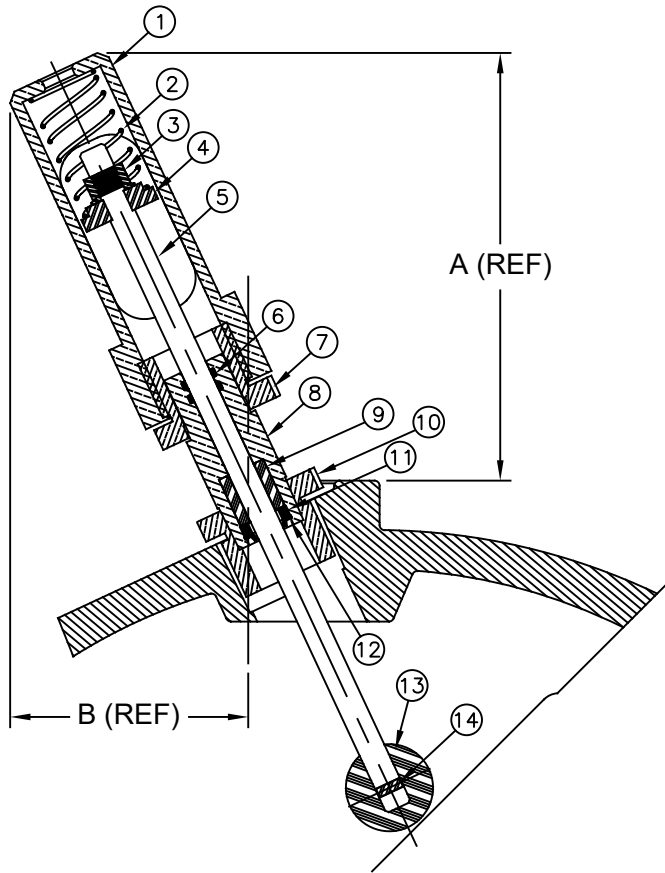
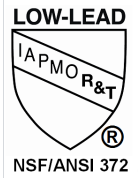
Dimensions

Size		AIS Part #	A (REF)		B (REF)		Weight	
inch	mm		inch	mm	inch	mm	lbs	kg
3	80	3382PI	5	127	5.50	140	1.22	.55
4	100	3383PI	5	127	5.50	140	1.22	.55
6	150	3385PI	5	127	5.50	140	1.22	.55

Flomatic Corporation can accept no responsibility for possible errors in catalogues, brochures and other printed material. Flomatic Corporation reserves the right to alter its products without notices. This also applies to product already agreed. All trademarks in this material are property of the respective companies. All rights reserved. ©2024 Flomatic Corporation. The drawings & information on this drawing sheet are the sole & exclusive property of Flomatic Corporation. Any reproduction, distribution, display or use of these drawings or information in whole or in part without written authorization of Flomatic Corporation is strictly prohibited. www.flomatic.com



Materials



Working Pressure: 250 psi / 17 Bar
For Valve Dimensions see 745 ASI spec sheets

Item #	Qty	Description	Material	ASTM	Item #	Qty	Description	Material	ASTM
1	1	Sight Housing	Brass	C36000	8	1	Body	Bronze	C93200
2	1	Spring	Stainless Steel	302	9	1	Bushing	Acetal	-----
3	1	Nut/Washer	Stainless Steel	18-8	10	1	Bushing	Bronze	C36000
4	1	Spring Seat	Stainless Steel	304	11	1	Rod Wiper	Molythane	-----
5	1	Rod	Stainless Steel	304	12	1	Retaining Ring	Stainless Steel	302
6	2	O'Ring	Buna-N	-----	13	1	Contact Ball	Acetal	-----
7	1	Nut	Bronze	C36000	14	1	Pin	Stainless Steel	420

Dimensions

Size		Part #	A (REF)		B (REF)		Weight	
inch	mm		inch	mm	inch	mm	lbs	kg
8	200	3386PI	5.50	140	2.75	70	1.27	.58
10	250	3387PI	5.50	140	2.75	70	1.30	.59
12	300	3388PI	5.50	140	2.75	70	1.32	.60

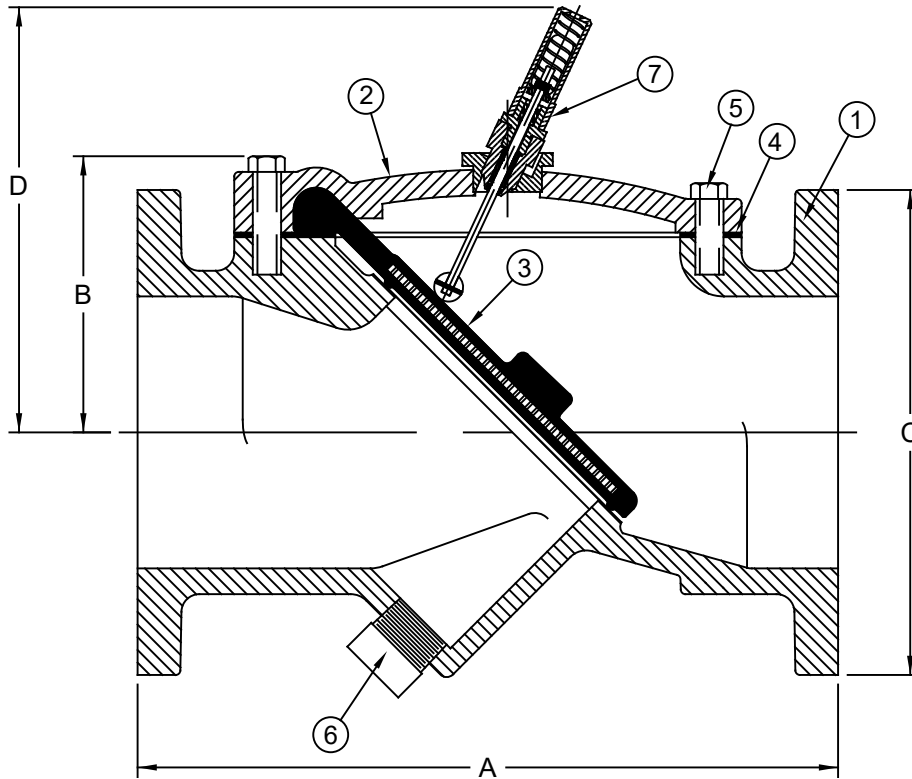
Flomatic Corporation can accept no responsibility for possible errors in catalogues, brochures and other printed material. Flomatic Corporation reserves the right to alter its products without notices. This also applies to product already agreed. All trademarks in this material are property of the respective companies. ©2024 Flomatic Corporation. The drawings & information on this drawing sheet are the sole & exclusive property of Flomatic Corporation. Any reproduction, distribution, display or use of these drawings or information in whole or in part without written authorization of Flomatic Corporation is strictly prohibited. www.flomatic.com

Swing Check Valve

Sizes 14" Thru 24" / 350 mm Thru 600 mm

Model 745 **FLOMATIC**[®]
Flomatic Corporation

Materials (w/ Position Indicator)



Max Temp 140°F (60°C)
Max Pressure 250psi (18bar)

Item #	Qty	Description	Material	ASTM
1	1	Body	Ductile Iron	A536
2	1	Cover	Ductile Iron	A536
3	1	Disc*	Buna coated Steel	-----
4	1	Gasket	Buna	-----
5	A/R	Cover Bolt	Steel	SAE Grade 5
6	1	Plug	Malleable Iron	-----
7	1	Position Indicator Assm.	Various	-----

Dimensions (150# ANSI B16.42 Flanges)

* Optional Buna-N or Viton Coated Steel

Size		Part #	A		B		C		D		Weight	
inch	mm		inch	mm	inch	mm	inch	mm	inch	mm	lbs	kg
14	350	2390PI	31	787	13-3/8	240	21	533	x	x	740	336
16	400	2391PI	32	813	15-3/8	391	23-1/2	597	x	x	1035	470
18	450	2392PI	36	914	17-1/8	435	25	635	x	x	1540	699
20	500	2393PI	40	1016	19-1/8	486	27-1/2	699	x	x	1835	832
24	600	2394PI	48	1219	22-3/4	578	32	813	x	x	2475	1123

Flomatic Corporation can accept no responsibility for possible errors in catalogues, brochures and other printed material. Flomatic Corporation reserves the right to alter its products without notices. This also applies to product already agreed. All trademarks in this material are property of the respective companies. All rights reserved. ©2021 Flomatic Corporation. The drawings & information on this drawing sheet are the sole & exclusive property of Flomatic Corporation. Any reproduction, distribution, display or use of these drawings or information in whole or in part without written authorization of Flomatic Corporation is strictly prohibited. www.flomatic.com



July 14, 2009
Dwg No: S745PI_10-24 Rev: G (9/21)

FLOMATIC CORPORATION
GLENS FALLS, N.Y. 12801
PHONE (518) 761-9797
FAX (518) 761-9798