

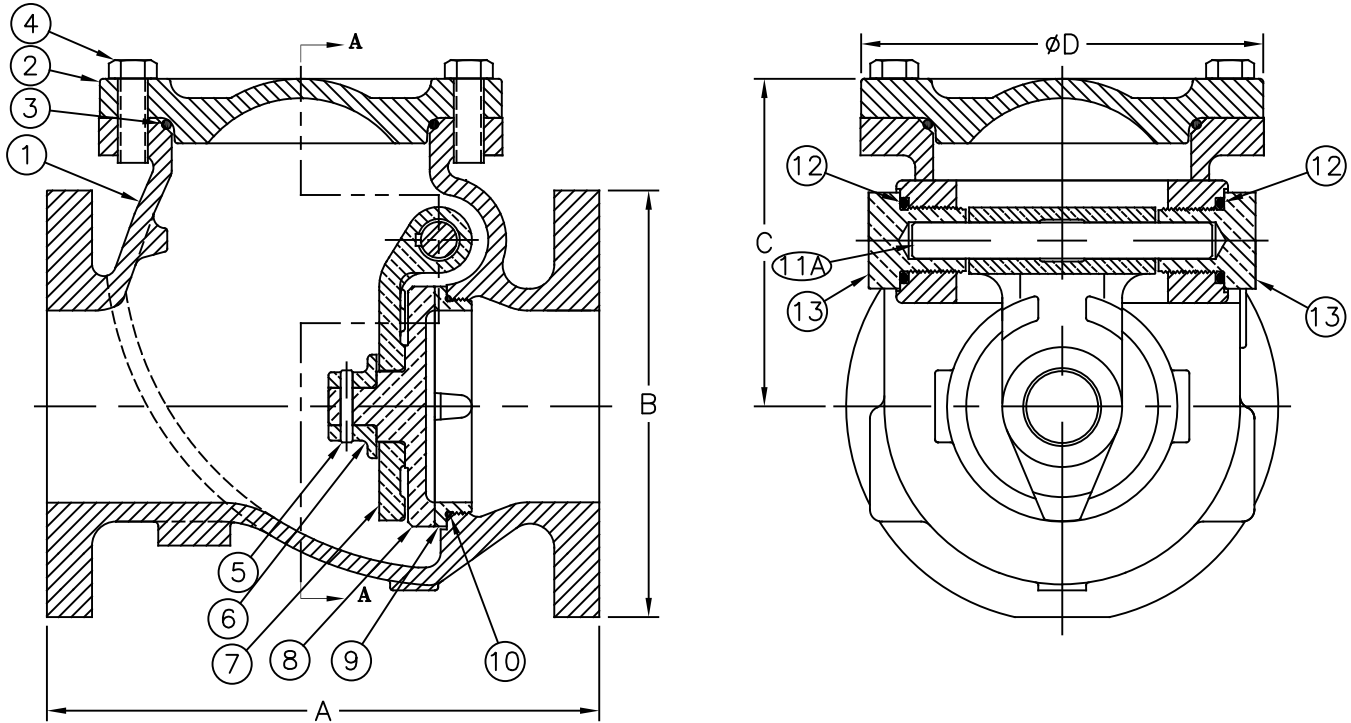
Swing Check Valve

Sizes 4" & 6" / 100 mm & 150 mm

Model 92 **FLOMATIC**[®]

Flomatic Corporation

Materials



Max Temp 180°F (82°C)
Max Pressure 200psi (14bar)

Item #	Qty	Description	Material	ASTM	Item #	Qty	Description	Material	ASTM
1	1	Body*	Cast Iron	A126	8	1	Flapper Plate	Bronze	C89833
2	1	Cover*	Cast Iron	A126	9	1	Seat Ring	Bronze	C89833
3	1	Cover O'Ring	Buna-n	-----	10	1	Seat Ring O'Ring	Buna-n	-----
4	4	Cover Bolt	Stainless Steel	18-8	11A	1	Flapper Support Shaft	Stainless Steel	17-4
5	1	Flapper Bolt	Stainless Steel	18-8	12	2	Bearing O'Ring	Buna-n	-----
6	1	Flapper Nut	Bronze	C89833	13	2	Shaft Support Bearing	Bronze	B140
7	1	Hinge Lever Arm	Bronze	C89833	*Epoxy Coated Optional resilient seat (Nitrile) available, add "R" to the end of the part number				

Dimensions (ANSI B16.1 - 125# Flanges)

Size		Part #	A		B		C		D		Weight	
inch	mm		inch	mm	inch	mm	inch	mm	inch	mm	lbs	kg
4	100	3707	11-1/2	292	8-57/64	226	7-7/32	183	8-3/8	213	109	50
6	150	3709	14	356	10-3/4	273	8-17/32	217	10-7/16	265	195	89

MANUFACTURED IN COMPLIANCE WITH AWWA C508 STANDARD

Flomatic Corporation can accept no responsibility for possible errors in catalogues, brochures and other printed material. Flomatic Corporation reserves the right to alter its products without notices. This also applies to product already agreed. All trademarks in this material are property of the respective companies. All right reserved. ©2018 Flomatic Corporation. The drawings & information on this drawing sheet are the sole & exclusive property of Flomatic Corporation. Any reproduction, distribution, display or use of these drawings or information in whole or in part without written authorization of Flomatic Corporation is strictly prohibited. www.flomatic.com