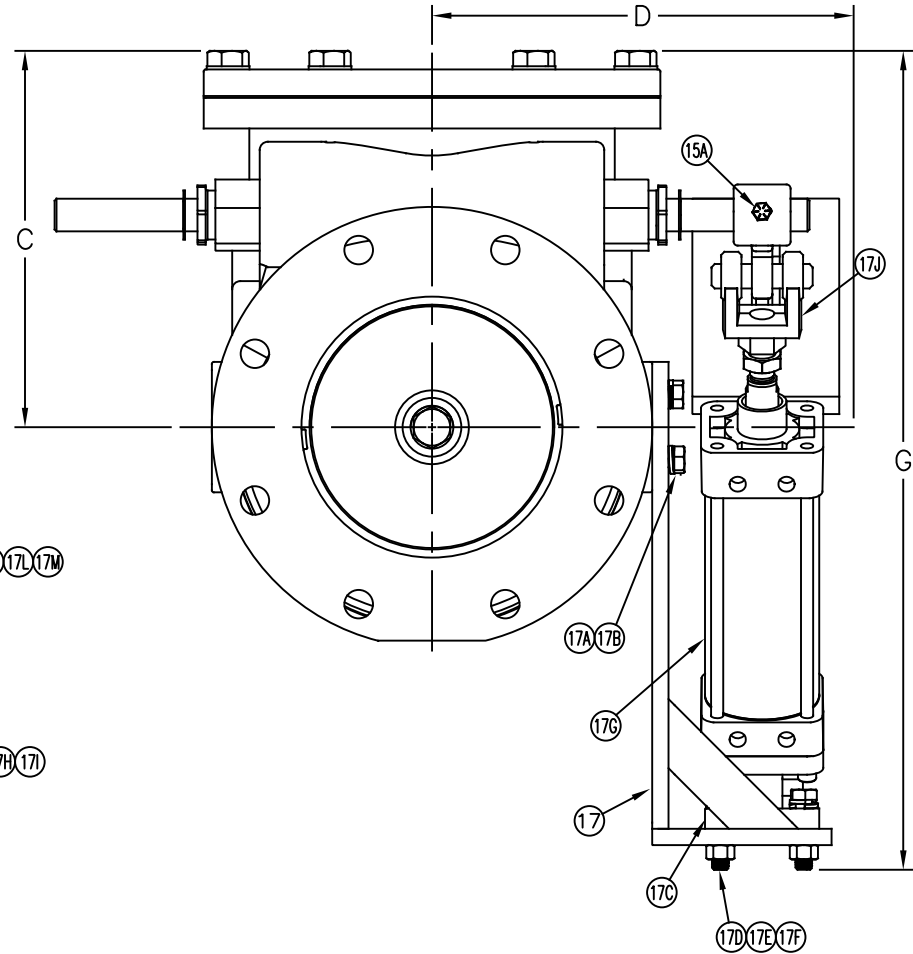
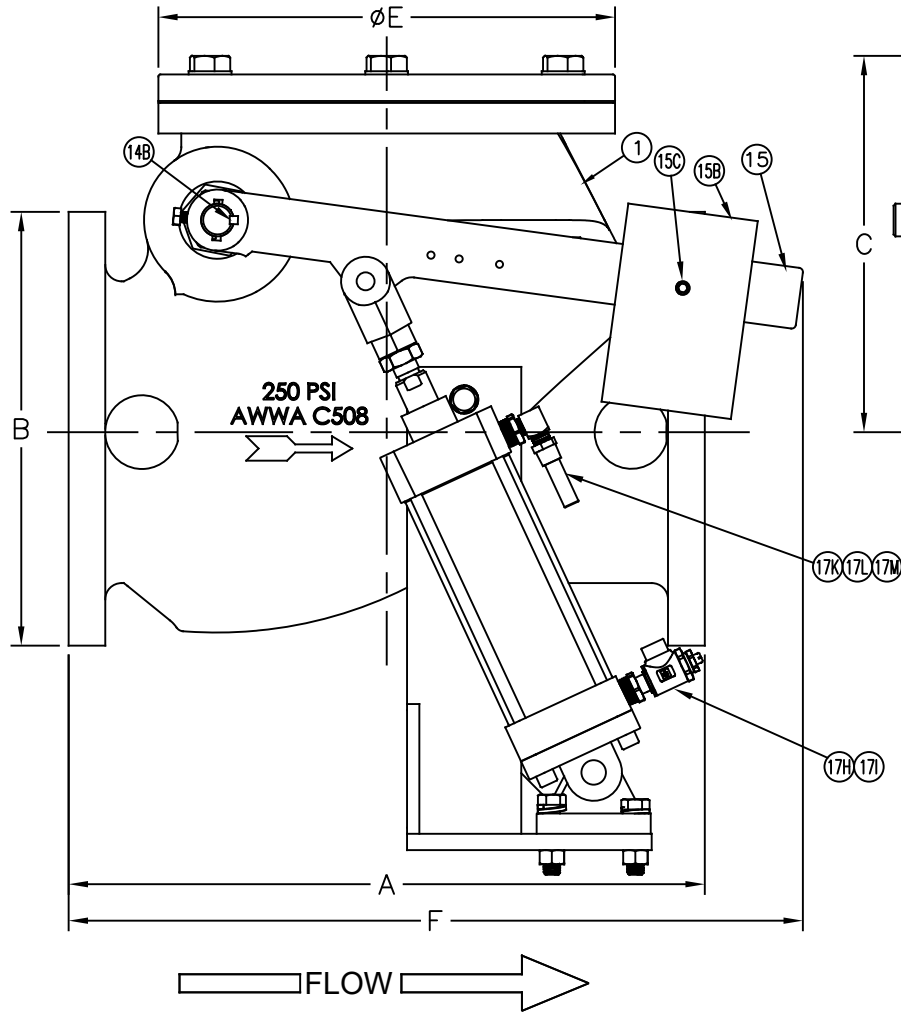


# Swing Check Valves

Size 8" / 200 mm  
 AIS COMPLIANT

Model 92CS **FLOMATIC**<sup>®</sup>  
 Flomatic Corporation



MANUFACTURED IN  
 COMPLIANCE WITH  
 AWWA C508 STANDARD

Flomatic Corporation can accept no responsibility for possible errors in catalogues, brochures and other printed material. Flomatic Corporation reserves the right to alter its products without notices. This also applies to product already agreed. All trademarks in this material are property of the respective companies. All rights reserved. ©2024 Flomatic Corporation. The drawings & information on this drawing sheet are the sole & exclusive property of Flomatic Corporation. Any reproduction, distribution, display or use of these drawings or information in whole or in part without written authorization of Flomatic Corporation is strictly prohibited. [www.flomatic.com](http://www.flomatic.com)

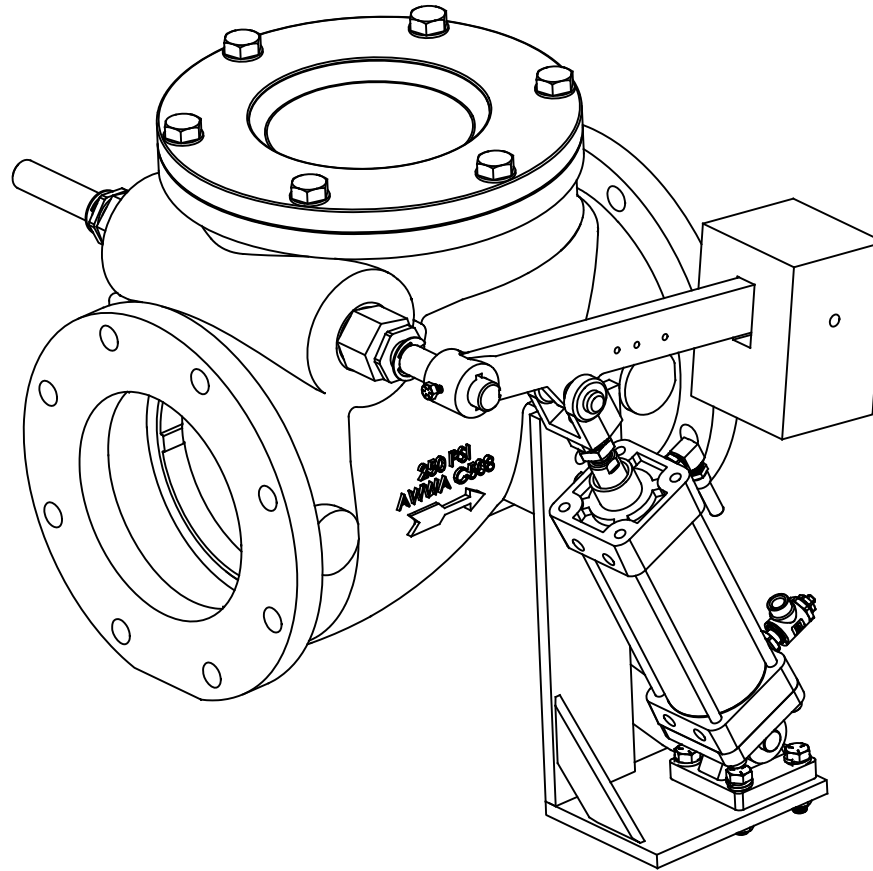
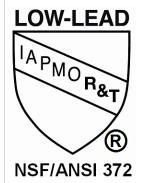
# Swing Check Valve

Sizes 8" / 200 mm  
AIS COMPLIANT

Model 92CS **FLOMATIC**<sup>®</sup>

Flomatic Corporation

## Materials (Cushion Swing)



Max Temp 180°F (82°C)  
Max Pressure 200psi (14bar)

| Item # | Qty | Description    | Material              | ASTM  | Item # | Qty | Description         | Material                | ASTM      |
|--------|-----|----------------|-----------------------|-------|--------|-----|---------------------|-------------------------|-----------|
| 1      | 1   | Body*          | See spec sheet S3710L |       | 17D    | 4   | Nut                 | Zinc Plated             | -----     |
| 14B    | 1   | Key Stock      | Stainless Steel       | 18-8  | 17E    | 4   | Bolt                | Zinc Plated             | -----     |
| 15     | 1   | Lever Arm*     | Hot Rolled Steel      | ----- | 17F    | 4   | Washer              | Zinc Plated             | -----     |
| 15A    | 1   | Bolt           | Stainless Steel       | 18-8  | 17G    | 1   | Cylinder            | See Spec Sheet S90CSCYL |           |
| 15B    | 1   | Weight         | Steel                 | ----- | 17H    | 2   | Bushing             | Brass                   | Lead Free |
| 15C    | 2   | SHSS           | Stainless Steel       | 18-8  | 17I    | 1   | Flow Control        | Bronze                  | Lead Free |
| 17     | 1   | Bracket*       | Hot Rolled Steel      | ----- | 17J    | 1   | Rod Clevis Assembly | Carbon Steel            | -----     |
| 17A    | 2   | Bolt           | Stainless Steel       | 18-8  | 17K    | 1   | Nipple              | Bronze                  | Lead Free |
| 17B    | 2   | Washer         | Stainless Steel       | 18-8  | 17L    | 1   | Street Elbow        | Bronze                  | Lead Free |
| 17C    | 1   | Mounting Plate | Carbon Steel          | ----- | 17M    | 1   | Finger Stainer      | Bronze                  | Lead Free |

## Dimensions (150# ANSI B16.42 Flanges)

MANUFACTURED IN COMPLIANCE WITH AWWA C508 STANDARD

| Size |     | Part # | A     |     | B     |     | C     |     | D     |     | ØE   |     | F     |     | G     |     | Weight |     |
|------|-----|--------|-------|-----|-------|-----|-------|-----|-------|-----|------|-----|-------|-----|-------|-----|--------|-----|
| inch | mm  |        | inch  | mm  | inch  | mm  | inch  | mm  | inch  | mm  | inch | mm  | inch  | mm  | inch  | mm  | lbs    | kg  |
| 8    | 200 | 3710CS | 19.50 | 495 | 13.30 | 338 | 11.53 | 293 | 12.50 | 318 | 14   | 356 | 22.57 | 573 | 25.10 | 638 | 355    | 161 |

Flomatic Corporation can accept no responsibility for possible errors in catalogues, brochures and other printed material. Flomatic Corporation reserves the right to alter its products without notices. This also applies to product already agreed. All trademarks in this material are property of the respective companies. All rights reserved. ©2024 Flomatic Corporation. The drawings & information on this drawing sheet are the sole & exclusive property of Flomatic Corporation. Any reproduction, distribution, display or use of these drawings or information in whole or in part without written authorization of Flomatic Corporation is strictly prohibited. [www.flomatic.com](http://www.flomatic.com)