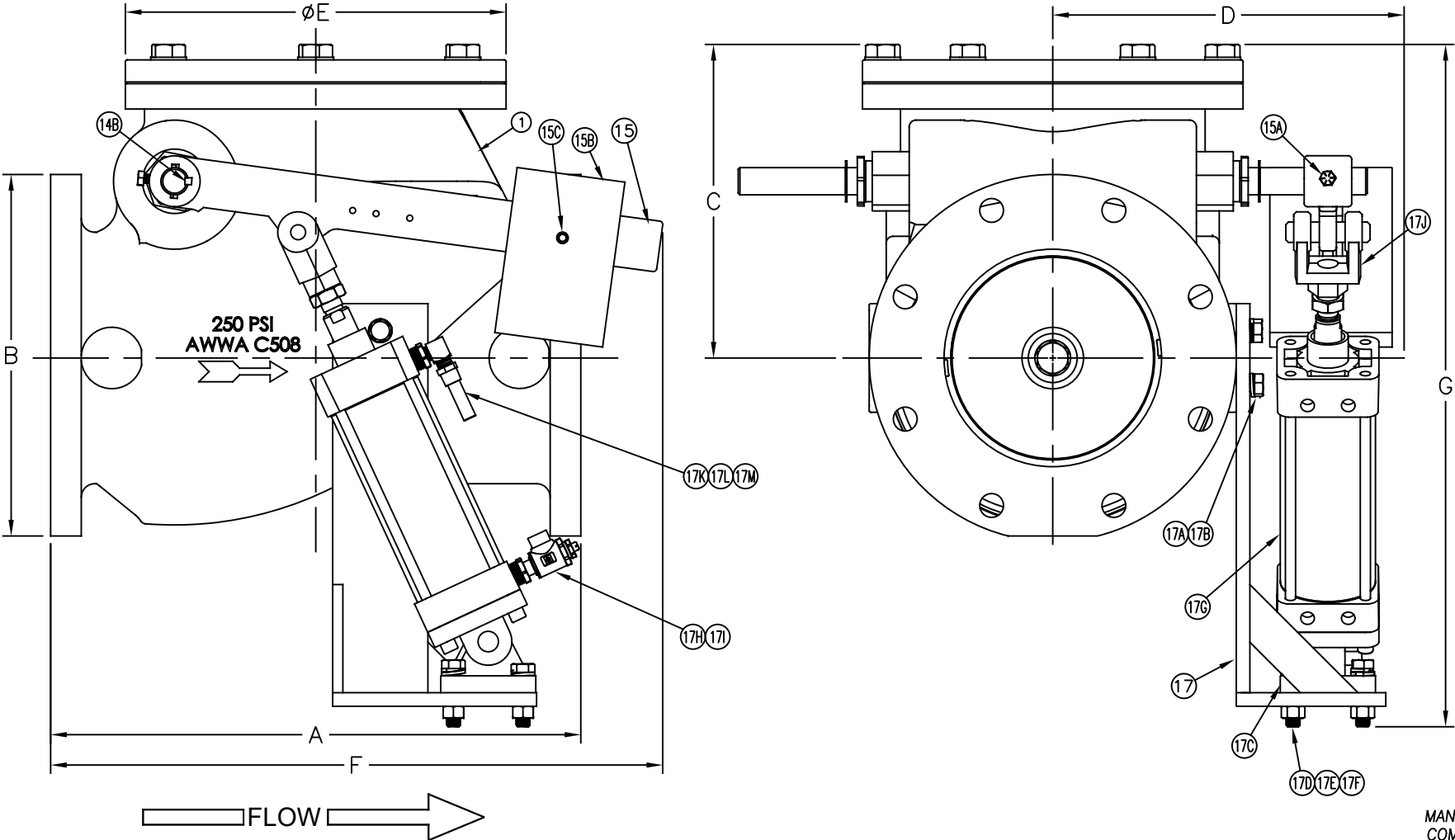


Swing Check Valves

Size 8" / 200 mm
 SHORT BODY
 AIS COMPLIANT

Model 92CS **FLOMATIC**[®]
 Flomatic Corporation



MANUFACTURED IN COMPLIANCE WITH AWWA C508 STANDARD

Flomatic Corporation can accept no responsibility for possible errors in catalogues, brochures and other printed material. Flomatic Corporation reserves the right to alter its products without notices. This also applies to product already agreed. All trademarks in this material are property of the respective companies. All rights reserved. ©2024 Flomatic Corporation. The drawings & information on this drawing sheet are the sole & exclusive property of Flomatic Corporation. Any reproduction, distribution, display or use of these drawings or information in whole or in part without written authorization of Flomatic Corporation is strictly prohibited. www.flomatic.com



Page 1 of 2
 April 28, 2008
 Dwg No: S3710-18CS Rev: H (2/24)

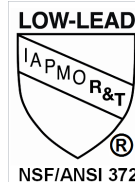
FLOMATIC CORPORATION
 GLENS FALLS, N.Y. 12801
 PHONE (518) 761-9797
 FAX (518) 761-9798

Swing Check Valve

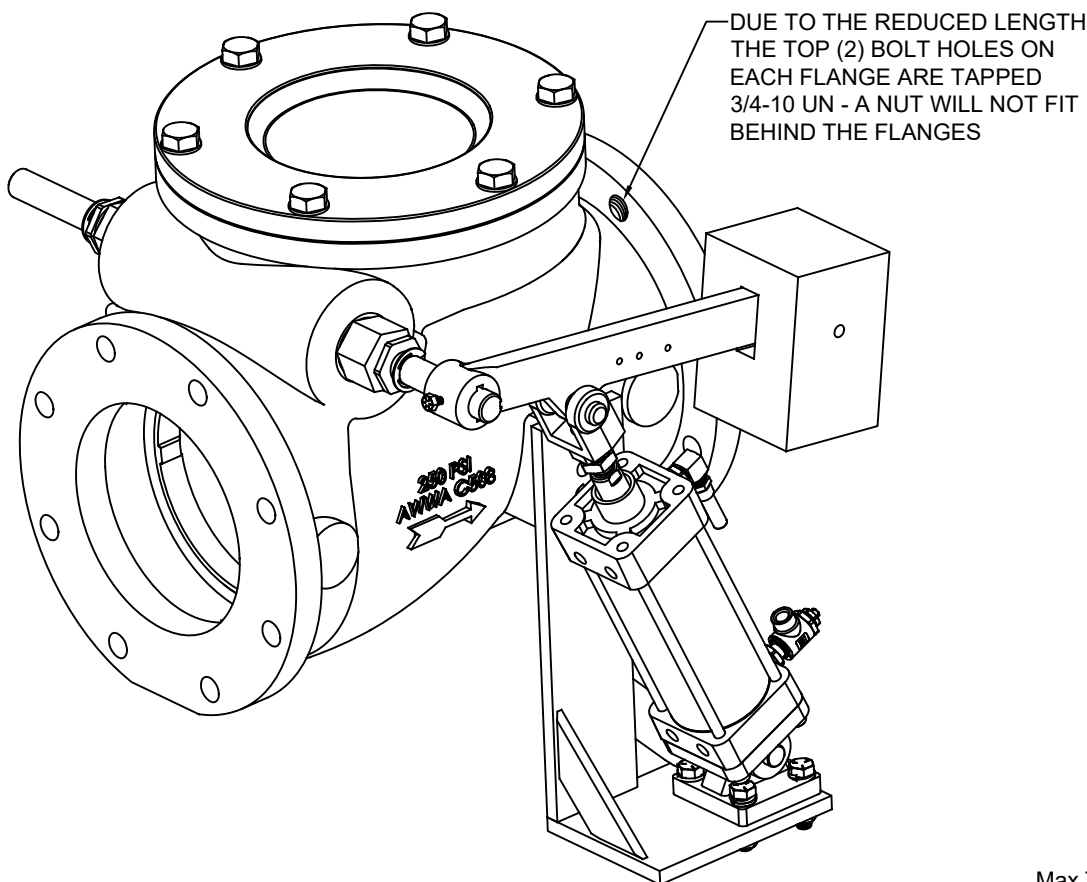
Sizes 8" / 200 mm
SHORT BODY
AIS COMPLIANT

Model 92CS

FLOMATIC[®]
Flomatic Corporation



Materials (Cushion Swing)



Max Temp 180°F (82°C)
Max Pressure 200psi (14bar)

Item #	Qty	Description	Material	ASTM	Item #	Qty	Description	Material	ASTM
1	1	Body*	See spec sheet S3710L-18		17D	4	Nut	Zinc Plated	-----
14B	1	Key Stock	Stainless Steel	18-8	17E	4	Bolt	Zinc Plated	-----
15	1	Lever Arm*	Hot Rolled Steel	-----	17F	4	Washer	Zinc Plated	-----
15A	1	Bolt	Stainless Steel	18-8	17G	1	Cylinder	See Spec Sheet S90CSCYL	
15B	1	Weight	Steel	-----	17H	2	Bushing	Brass	Lead Free
15C	2	SHSS	Stainless Steel	18-8	17I	1	Flow Control	Bronze	Lead Free
17	1	Bracket*	Hot Rolled Steel	-----	17J	1	Rod Clevis Assembly	Carbon Steel	-----
17A	2	Bolt	Stainless Steel	18-8	17K	1	Nipple	Bronze	Lead Free
17B	2	Washer	Stainless Steel	18-8	17L	1	Street Elbow	Bronze	Lead Free
17C	1	Mounting Plate	Carbon Steel	-----	17M	1	Finger Stainer	Bronze	Lead Free

Dimensions (150# ANSI B16.42 Flanges)

MANUFACTURED IN COMPLIANCE WITH AWWA C508 STANDARD

Size		Part #	A		B		C		D		ØE		F		G		Weight	
inch	mm		inch	mm	inch	mm	inch	mm	inch	mm	inch	mm	inch	mm	inch	mm	lbs	kg
8	200	3710CS-18	18	457	13.30	338	11.53	293	12.50	318	14	356	22.57	573	25.10	638	345	157

Flomatic Corporation can accept no responsibility for possible errors in catalogues, brochures and other printed material. Flomatic Corporation reserves the right to alter its products without notices. This also applies to product already agreed. All trademarks in this material are property of the respective companies. All rights reserved. ©2024 Flomatic Corporation. The drawings & information on this drawing sheet are the sole & exclusive property of Flomatic Corporation. Any reproduction, distribution, display or use of these drawings or information in whole or in part without written authorization of Flomatic Corporation is strictly prohibited. www.flomatic.com