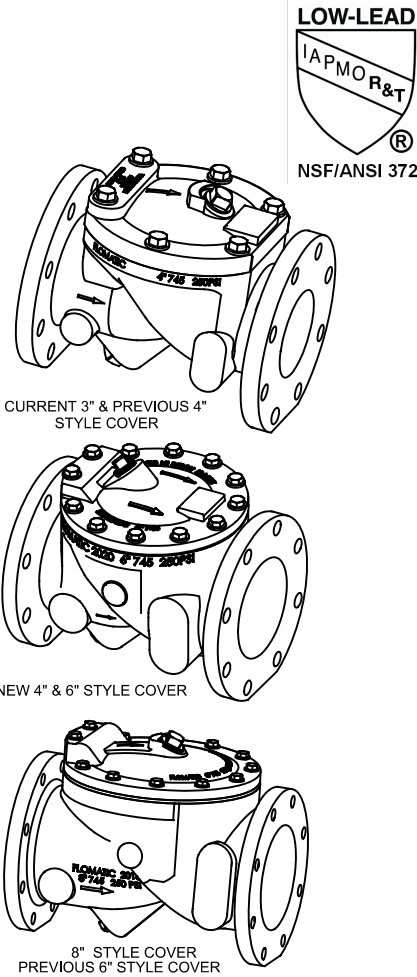
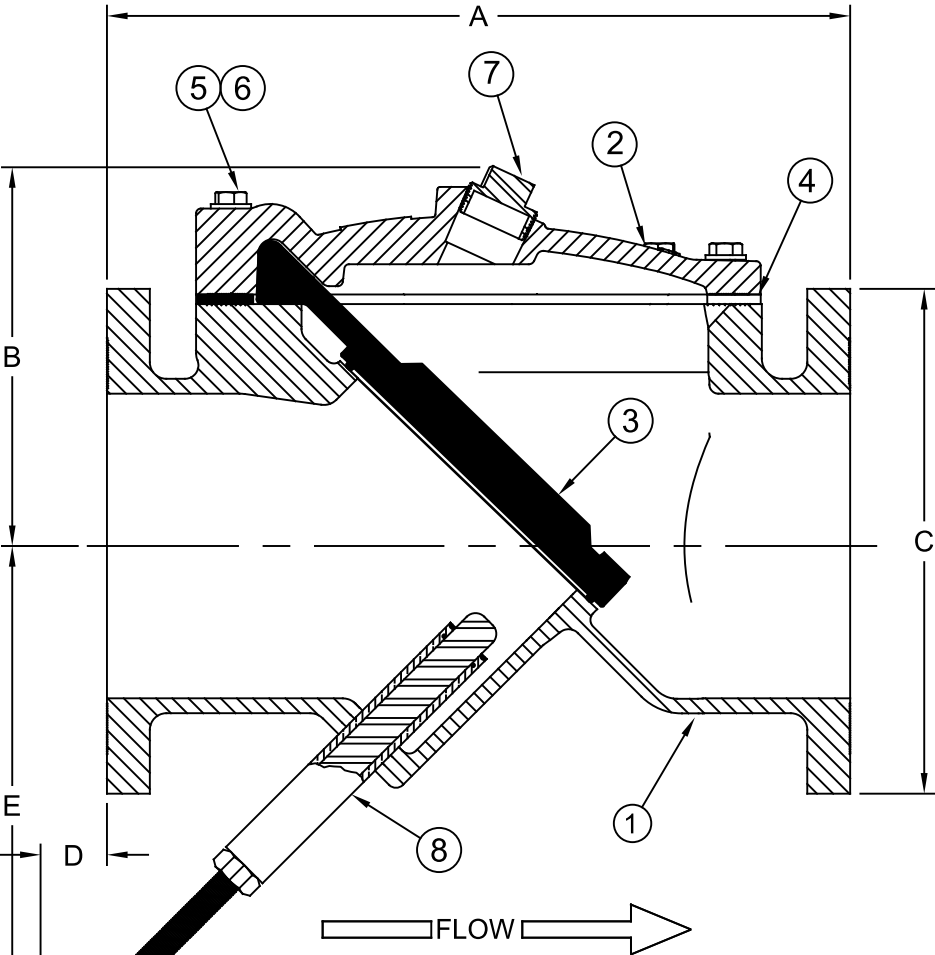


Materials (w/ Backflush)



Max Temp 140°F (60°C)  
Max Pressure 250psi (18bar)

Item #	Qty	Description	Material	ASTM
1	1	Body (Epoxy Coated)	Ductile Iron	65-45-12
2	1	Cover (Epoxy Coated)	Ductile Iron	65-45-12
3	1	Flapper*	Buna (w/ DI disc)	-----
4	1	Gasket*	Buna	-----
5	A/R	HHCS	Stainless Steel	304
6	A/R	Washer	Stainless Steel	304
7	2	Pipe Plug	Stainless Steel	304
8	1	Backflow Actuator**	Brass	-----

\* Optional EPDM or Viton Coated Steel

Dimensions (150# ANSI B16.42 Flanges)

Size		Part #	A		B		C		D (Ref)		E (Ref)		Weight	
inch	mm		inch	mm	inch	mm	inch	mm	inch	mm	inch	mm	lbs	kg
3	80	3382BF	9-1/2	241	4-7/8	124	7-3/8	187	2-7/8	73	8-11/16	221	40	18
4	100	3383BF	11-1/2	292	6-1/2	165	8-11/16	221	2-9/16	65	9-5/8	245	60	27
6	150	3385BF	14	356	7-1/2	191	10-3/4	273	3-7/8	95	12-3/16	310	103	47
8	200	3386BF	19-1/2	495	10	254	13-1/4	337	1-3/4	45	13-11/16	348	216	98

Flomatic Corporation can accept no responsibility for possible errors in catalogues, brochures and other printed material. Flomatic Corporation reserves the right to alter its products without notices. This also applies to product already agreed. All trademarks in this material are property of the respective companies. All rights reserved. ©2023 Flomatic Corporation. The drawings & information on this drawing sheet are the sole & exclusive property of Flomatic Corporation. Any reproduction, distribution, display or use of these drawings or information in whole or in part without written authorization of Flomatic Corporation is strictly prohibited. [www.flomatic.com](http://www.flomatic.com)

# Swing Check Valve

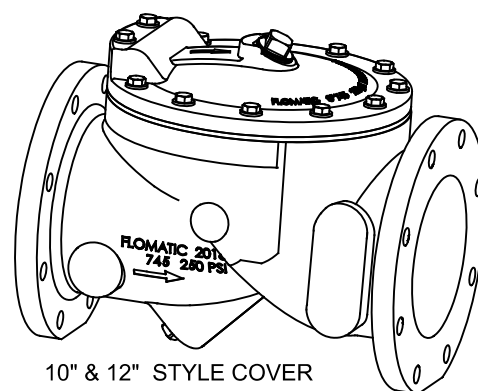
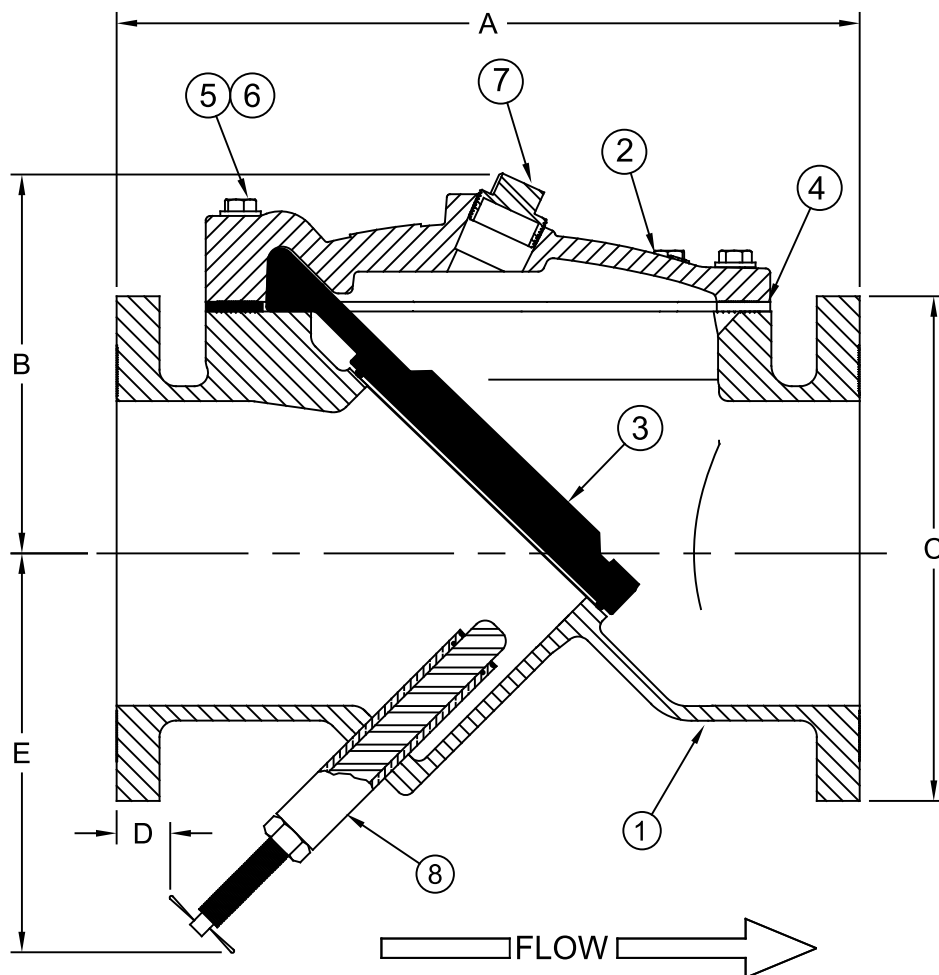
Sizes 10" & 12" / 250 mm & 300 mm

Model 745BF

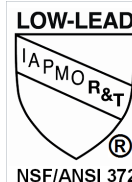
**FLOMATIC®**

Flomatic Corporation

## Materials (w/ Backflush)



10" & 12" STYLE COVER



Max Temp 140°F (60°C)  
Max Pressure 250psi (18bar)

Item #	Qty	Description	Material	ASTM
1	1	Body (Epoxy Coated)	Ductile Iron	65-45-12
2	1	Cover (Epoxy Coated)	Ductile Iron	65-45-12
3	1	Flapper*	Buna (w/ DI disc)	-----
4	1	Gasket*	Buna	-----
5	A/R	HHCS	Stainless Steel	304
6	A/R	Washer	Stainless Steel	304
7	2	Pipe Plug	Stainless Steel	304
8	1	Backflow Actuator**	Brass	-----

\* Optional EPDM or Viton Coated Steel

## Dimensions (150# ANSI B16.42 Flanges)

Size		Part #	A		B		C		D (Ref)		E (Ref)		Weight	
inch	mm		inch	mm	inch	mm	inch	mm	inch	mm	inch	mm	lbs	kg
10	250	3387BF	24-1/2	622	11.928	572	15-13/16	402	1-3/4	45	14-3/4	375	362	164
12	300	3388BF	27-1/2	699	12.863	559	18-5/8	473	2-1/8	54	17-3/16	437	550	250

Dimension "D" does not exceed past the flange on sizes 10" & 12"

Flomatic Corporation can accept no responsibility for possible errors in catalogues, brochures and other printed material. Flomatic Corporation reserves the right to alter its products without notices. This also applies to product already agreed. All trademarks in this material are property of the respective companies. All rights reserved. ©2023 Flomatic Corporation. The drawings & information on this drawing sheet are the sole & exclusive property of Flomatic Corporation. Any reproduction, distribution, display or use of these drawings or information in whole or in part without written authorization of Flomatic Corporation is strictly prohibited. [www.flomatic.com](http://www.flomatic.com)

**FLOMATIC® VALVES**

February 21, 2023  
Dwg No: S745BF Rev: H (3/25)

FLOMATIC CORPORATION  
GLENS FALLS, N.Y. 12801  
PHONE (518) 761-9797  
FAX (518) 761-9798