

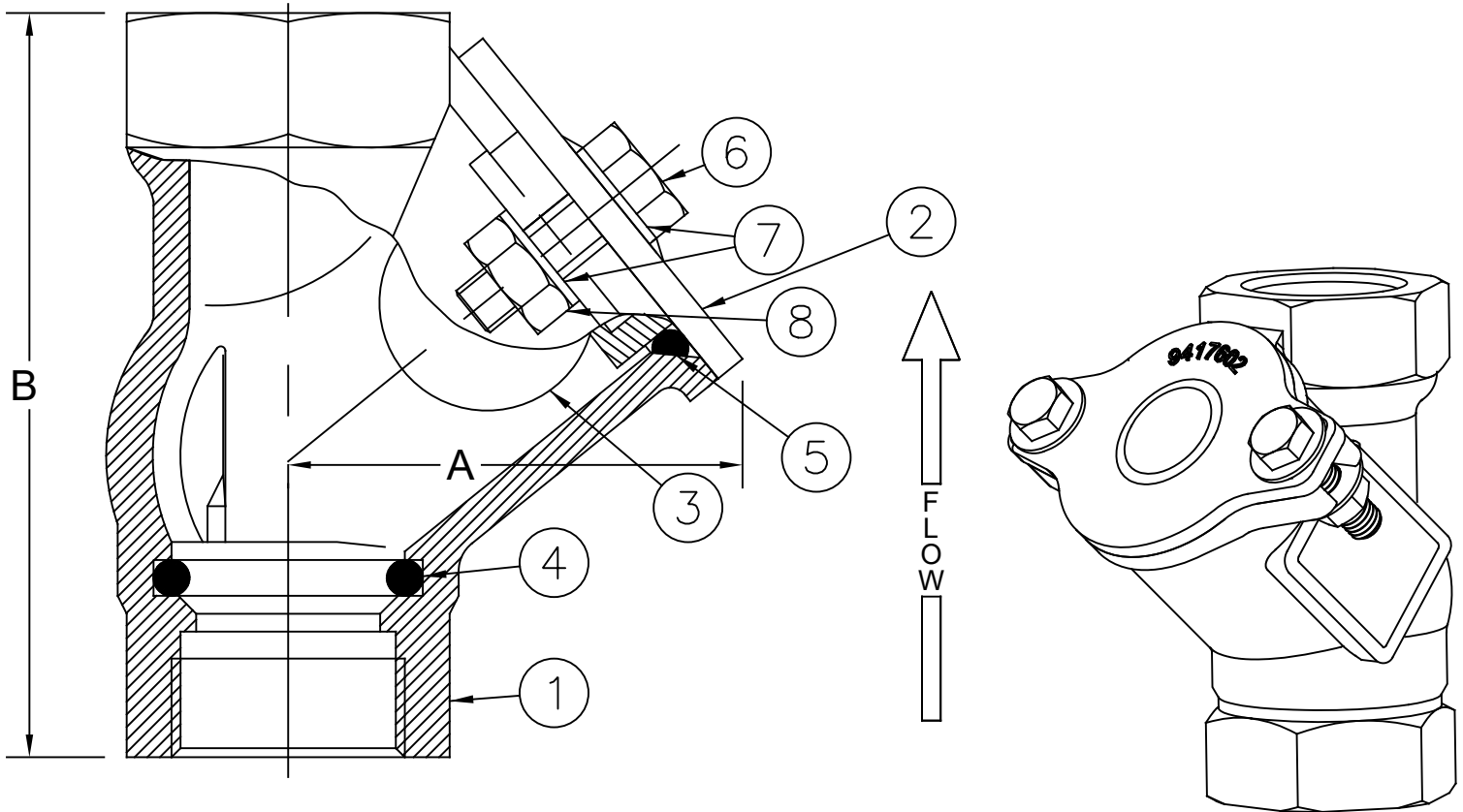
Ball Check Valve

Sizes 1" Thru 2-1/2"/25mm Thru 65mm

Model 508 **FLOMATIC**[®]

Flomatic Corporation

Materials



Max Temp 180°F (82°C)
Max Inlet Pressure 150 psi (10 bar)

| Item # | Qty | Description | Material | Standard | Item # | Qty | Description | Material | Standard |
|--------|-----|-----------------------|-----------|----------|--------|-----|-------------|---------------------|--------------|
| 1 | 1 | Body (Epoxy Coated)* | Cast Iron | ASTM A48 | 5 | 1 | Cover Seal | Nitrile | ----- |
| 2 | 1 | Cover (Epoxy Coated)* | Cast Iron | ASTM A48 | 6 | 2 | Bolt* | Stainless Steel 304 | ASME B18.2.1 |
| 3 | 1 | Ball (Sinking)** | Phenolic | ----- | 7 | 4 | Washer* | Stainless Steel 304 | ASME B18.2.1 |
| 4 | 1 | O-Ring | Buna-N | ----- | 8 | 2 | Hex Nut* | Stainless Steel 304 | ASME B18.2.1 |

*1-1/4" & 2" Ductile Iron ASTM A536 65-45-12 & 18-8 SS Fasteners
**Optional floating ball available add "FB" to part number

Dimensions (FNPT X FNPT)

ANSI B1.20.1

| Size | | Part # | A | | B | | Width | | Weight | |
|-------|----|--------|------|-----|------|-----|-------|-----|--------|-----|
| inch | mm | | inch | mm | inch | mm | inch | mm | lbs | kg |
| 1 | 25 | 3232 | 2.66 | 68 | 4.50 | 114 | 3.94 | 100 | 3.5 | 1.6 |
| 1-1/4 | 32 | 3233 | 3.11 | 79 | 5.20 | 132 | 4.25 | 108 | 4.5 | 2.1 |
| 1-1/2 | 40 | 3234 | 3.41 | 87 | 5.70 | 145 | 4.80 | 122 | 6 | 2.7 |
| 2 | 50 | 3235 | 4 | 102 | 6.84 | 174 | 5.44 | 138 | 8 | 3.6 |
| 2-1/2 | 65 | 3236 | 4.91 | 125 | 7.88 | 200 | 6.25 | 159 | 11.5 | 5.2 |

Flomatic Corporation can accept no responsibility for possible errors in catalogues, brochures and other printed material. Flomatic Corporation reserves the right to alter its products without notices. This also applies to product already agreed. All trademarks in this material are property of the respective companies. All rights reserved. ©2024 Flomatic Corporation. The drawings & information on this drawing sheet are the sole & exclusive property of Flomatic Corporation. Any reproduction, distribution, display or use of these drawings or information in whole or in part without written authorization of Flomatic Corporation is strictly prohibited. www.flomatic.com