

Control Valve

150# Flange

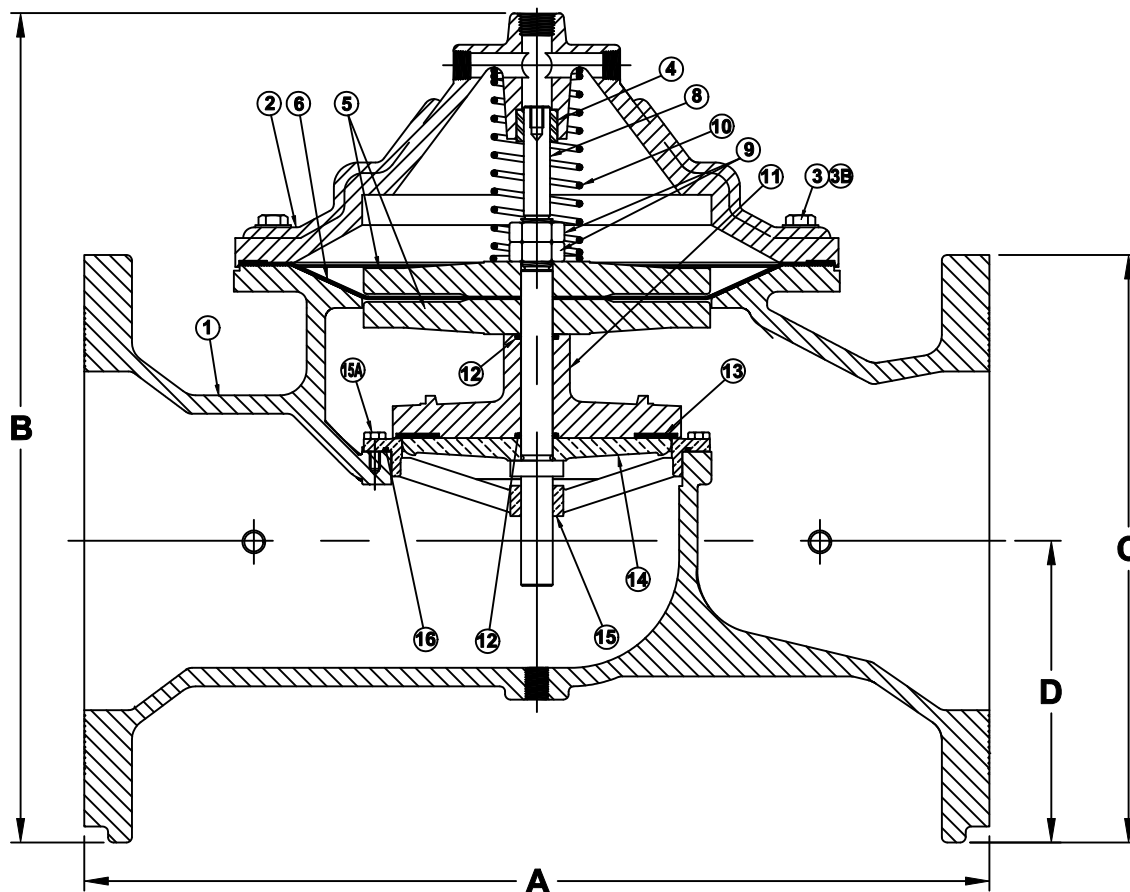
Model CF



Flomatic Corporation

Sizes 8" / 200 mm

Materials (Globe Style)



Max Temp 180°F (82°C)
Max Pressure 250psi (18bar)

Item #	Qty	Description	Material	ASTM	Item #	Qty	Description	Material	ASTM
1	1	Body (W/ Tag & Plug)	Ductile Iron	A-536	10	1	Spring	Stainless Steel	302
2	1	Cover	Ductile Iron	A-536	11	1	Spool*	Ductile Iron*	A-536
3	12	Cover Bolt	Stainless Steel	18-8	12	2	Spool O'Ring (Stem O'Ring)*	Buna-n**	-----
3B	12	Cover Washer	Stainless Steel	18-8	13	1	Spool Seal (Seat Seal)**	Buna-n**	-----
4	1	Cover Bushing*	Bronze*	B140-83	14	1	Seat Plate*	Unleaded Bronze*	C89833
5	2	Diaphragm Plate*	Ductile Iron*	A-536	15	1	Seat Ring*	Unleaded Bronze*	C89833
6	1	Diaphragm	Nitrile/Nylon	-----	15A	6	Seat Ring Cap Screws	Stainless Steel	18-8
8	1	Stem	Stainless Steel	304	16	1	Seat O'Ring**	Buna-n**	-----
9	2	Jam Nut	Stainless Steel	18-8	*OPTIONAL 316 STAINLESS STEEL AVAILABLE				
					**OPTIONAL VITON AVAILABLE				

Dimensions

Size		Part #	A		B		C		D		Weight	
Inch	mm		Inch	mm	Inch	mm	Inch	mm	Inch	mm	lbs	kg
8	200	8471310	21-3/8	543	16-61/64	431	13-1/8	333	6-13/32	163	275	125

Flomatic Corporation can accept no responsibility for possible errors in catalogues, brochures and other printed material. Flomatic Corporation reserves the right to alter its products without notices. This also applies to product already agreed. All trademarks in this material are property of the respective companies. All right reserved. ©2016 Flomatic Corporation. The drawings & information on this drawing sheet are the sole & exclusive property of Flomatic Corporation. Any reproduction, distribution, display or use of these drawings or information in whole or in part without written authorization of Flomatic Corporation is strictly prohibited.

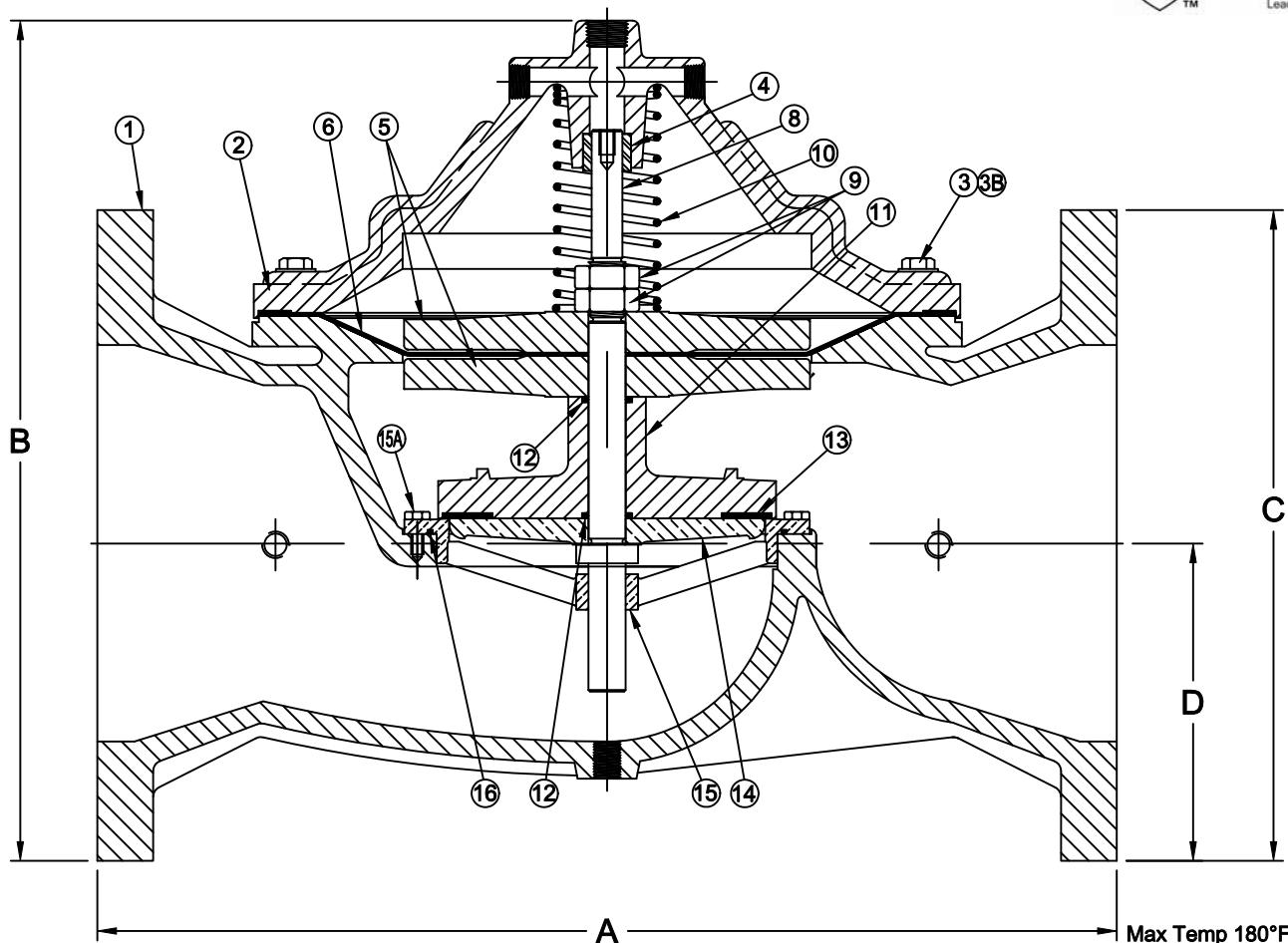


August 18, 2003
Dwg No:S8RP125 Rev D (7/16)

FLOMATIC CORPORATION
GLENS FALLS, N.Y. 12801
PHONE (518) 761-9797
FAX (518) 761-9798

Control Valve**150# Flange****Model CF****FLOMATIC®**

Sizes 10" / 250 mm

Flomatic Corporation**Materials (Globe Style)**Max Temp 180°F (82°C)
Max Pressure 250psi (18bar)

Item #	Qty	Description	Material	ASTM	Item #	Qty	Description	Material	ASTM
1	1	Body (W/ Tag & Plug)	Ductile Iron	A-536	10	1	Spring	Stainless Steel	302
2	1	Cover	Ductile Iron	A-536	11	1	Spool*	Ductile Iron*	A-536
3	12	Cover Bolt	Stainless Steel	18-8	12	2	Spool O'Ring (Stem O'Ring)**	Buna-n**	-----
3B	12	Cover Washer	Stainless Steel	18-8	13	1	Spool Seal (Seat Seal)**	Buna-n**	-----
4	1	Cover Bushing*	Bronze*	B140-83	14	1	Seat Plate*	Unleaded Bronze*	C89833
5	2	Diaphragm Plate*	Ductile Iron*	A-536	15	1	Seat Ring*	Unleaded Bronze*	C89833
6	1	Diaphragm	Nitrile/Nylon	-----	15A	8	Seat Ring Cap Screws	Stainless Steel	18-8
8	1	Stem	Stainless Steel	304	16	1	Seat O'Ring**	Buna-n**	-----
9	2	Jam Nut	Stainless Steel	18-8	*OPTIONAL 316 STAINLESS STEEL AVAILABLE				
					**OPTIONAL VITON AVAILABLE				

Dimensions

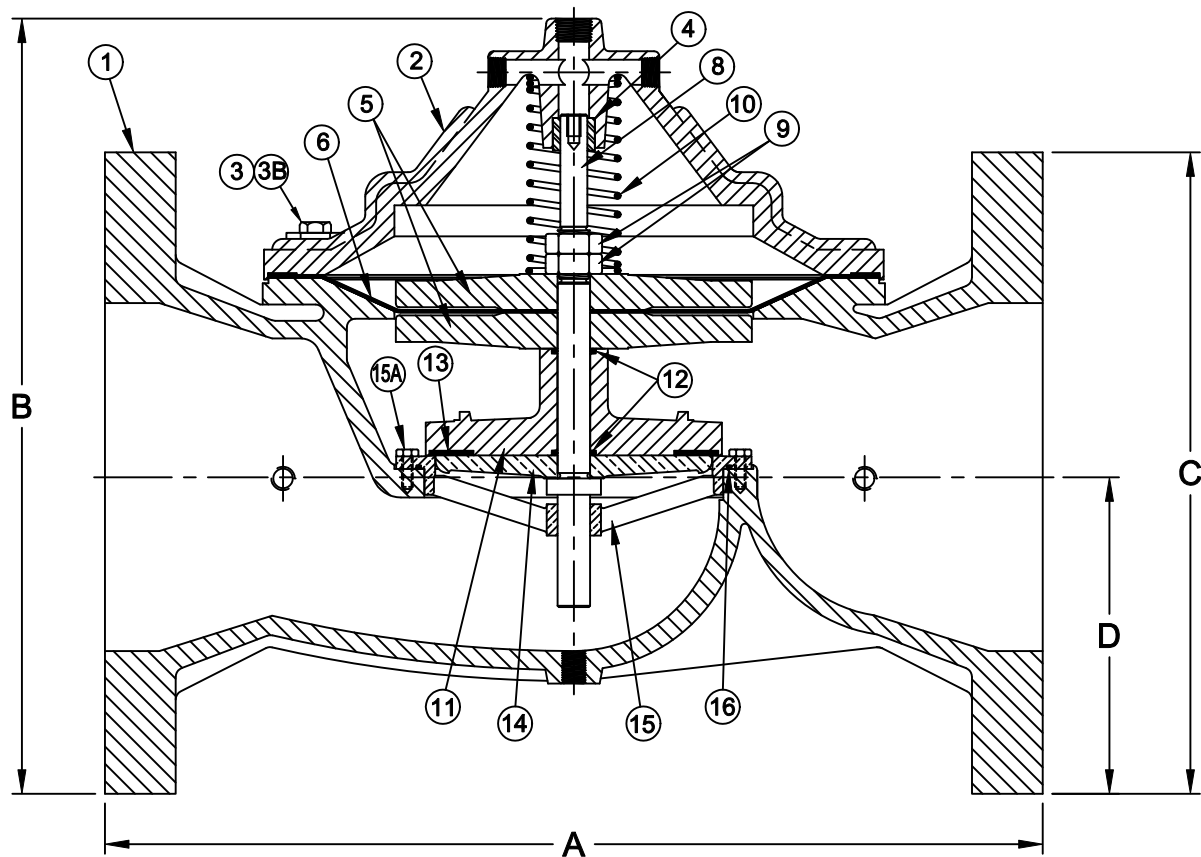
Size		Part #	A		B		C		D		Weight	
inch	mm		inch	mm	inch	mm	inch	mm	inch	mm	lbs	kg
10	250	8471311	26	660	21-13/16	554	15-1/2	394	7-1/2	191	550	250

Flomatic Corporation can accept no responsibility for possible errors in catalogues, brochures and other printed material. Flomatic Corporation reserves the right to alter its products without notices. This also applies to product already agreed. All trademarks in this material are property of the respective companies. All right reserved. ©2011 Flomatic Corporation. The drawings & information on this drawing sheet are the sole & exclusive property of Flomatic Corporation. Any reproduction, distribution, display or use of these drawings or information in whole or in part without written authorization of Flomatic Corporation is strictly prohibited.

FLOMATIC® VALVESAugust 19, 2003
Dwg No:S10rp125 Rev C (7/13)FLOMATIC CORPORATION
GLENS FALLS, N.Y. 12801
PHONE (518) 761-9797
FAX (518) 761-9798

Control Valve**300# Flange****Model CF****FLOMATIC®**

Sizes 8" / 200 mm

Flomatic Corporation**Materials (Globe Style)**Max Temp 180°F (82°C)
Max Pressure 400psi (28bar)

Item #	Qty	Description	Material	ASTM	Item #	Qty	Description	Material	ASTM
1	1	Body (W/ Tag & Plug)	Ductile Iron	A-536	10	1	Spring	Stainless Steel	302
2	1	Cover	Ductile Iron	A-536	11	1	Spool*	Ductile Iron*	A-536
3	12	Cover Bolt	Stainless Steel	18-8	12	2	Spool O'Ring (Stem O'Ring)**	Buna-n**	-----
3B	12	Cover Washer	Stainless Steel	18-8	13	1	Spool Seal (Seat Seal)**	Buna-n**	-----
4	1	Cover Bushing*	Bronze*	B140-83	14	1	Seat Plate*	Unleaded Bronze*	C89833
5	2	Diaphragm Plate*	Ductile Iron*	A-536	15	1	Seat Ring*	Unleaded Bronze*	C89833
6	1	Diaphragm	Nitrile/Nylon	-----	15A	6	Seat Ring Cap Screws	Stainless Steel	18-8
8	1	Stem	Stainless Steel	304	16	1	Seat O'Ring**	Buna-n**	-----
9	2	Jam Nut	Stainless Steel	18-8	*OPTIONAL 316 STAINLESS STEEL AVAILABLE				
					**OPTIONAL VITON AVAILABLE				

Dimensions

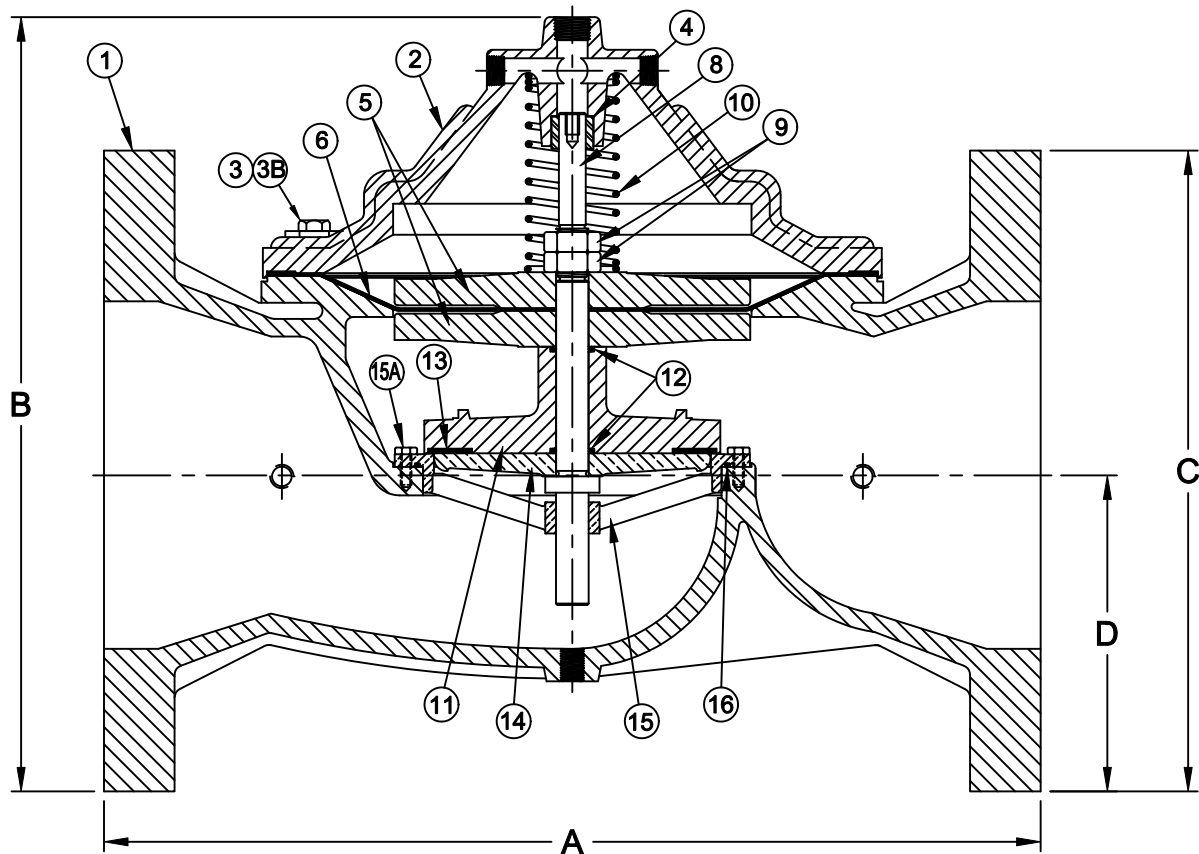
Size		Part #	A		B		C		D		Weight	
inch	mm		inch	mm	inch	mm	inch	mm	inch	mm	lbs	kg
8	200	8472810	21-9/16	548	17-13/16	452	14-3/4	375	7-9/32	185	325	147

Flomatic Corporation can accept no responsibility for possible errors in catalogues, brochures and other printed material. Flomatic Corporation reserves the right to alter its products without notices. This also applies to product already agreed. All trademarks in this material are property of the respective companies. All right reserved. ©2011 Flomatic Corporation. The drawings & information on this drawing sheet are the sole & exclusive property of Flomatic Corporation. Any reproduction, distribution, display or use of these drawings or information in whole or in part without written authorization of Flomatic Corporation is strictly prohibited.

FLOMATIC® VALVESAugust 20, 2003
Dwg No:S8RP250 Rev C (7/13)FLOMATIC CORPORATION
GLENS FALLS, N.Y. 12801
PHONE (518) 761-9797
FAX (518) 761-9798

Control Valve**300# Flange****Model CF****FLOMATIC®**

Sizes 10" / 250 mm

Flomatic Corporation**Materials (Globe Style)**Max Temp 180°F (82°C)
Max Pressure 400psi (28bar)

Item #	Qty	Description	Material	ASTM	Item #	Qty	Description	Material	ASTM
1	1	Body (W/ Tag & Plug)	Ductile Iron	A-536	10	1	Spring	Stainless Steel	302
2	1	Cover	Ductile Iron	A-536	11	1	Spool*	Ductile Iron*	A-536
3	12	Cover Bolt	Stainless Steel	18-8	12	2	Spool O'Ring (Stem O'Ring)**	Buna-n**	-----
3B	12	Cover Washer	Stainless Steel	18-8	13	1	Spool Seal (Seat Seal)**	Buna-n**	-----
4	1	Cover Bushing*	Bronze*	B140-83	14	1	Seat Plate*	Unleaded Bronze*	C89833
5	1	Diaphragm Plate*	Ductile Iron*	A-536	15	1	Seat Ring*	Unleaded Bronze*	C89833
6	1	Diaphragm	Nitrile/Nylon	-----	15A	8	Seat Ring Cap Screws	Stainless Steel	18-8
8	1	Stem	Stainless Steel	304	16	1	Seat O'Ring**	Buna-n**	-----
9	2	Jam Nut	Stainless Steel	18-8	*OPTIONAL 316 STAINLESS STEEL AVAILABLE				
					**OPTIONAL VITON AVAILABLE				

Dimensions

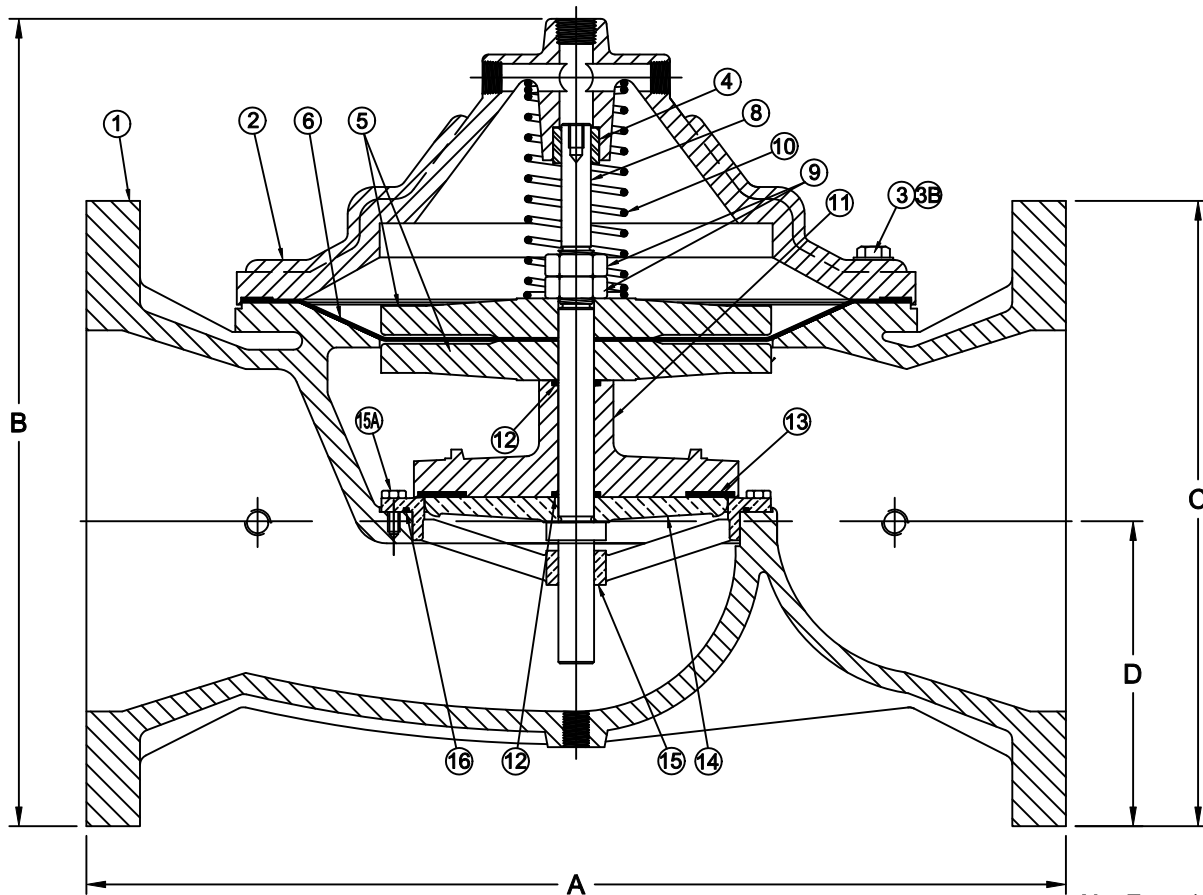
Size		Part #	A		B		C		D		Weight	
inch	mm		inch	mm	inch	mm	inch	mm	inch	mm	lbs	kg
10	250	8472811	27-3/8	695	22-13/16	579	17-1/4	438	8-1/2	216	600	272

Flomatic Corporation can accept no responsibility for possible errors in catalogues, brochures and other printed material. Flomatic Corporation reserves the right to alter its products without notices. This also applies to product already agreed. All trademarks in this material are property of the respective companies. All right reserved. ©2011 Flomatic Corporation. The drawings & information on this drawing sheet are the sole & exclusive property of Flomatic Corporation. Any reproduction, distribution, display or use of these drawings or information in whole or in part without written authorization of Flomatic Corporation is strictly prohibited.

FLOMATIC® VALVESAugust 20, 2003
Dwg No: S10RP250 Rev C (7/13)FLOMATIC CORPORATION
GLENS FALLS, N.Y. 12801
PHONE (518) 761-9797
FAX (518) 761-9798

Control Valve**150# Flange****Model CF****FLOMATIC®**

Sizes 12" / 300 mm

Flomatic Corporation**Materials (Globe Style)**Max Temp 180°F (82°C)
Max Pressure 250psi (18bar)

Item #	Qty	Description	Material	ASTM	Item #	Qty	Description	Material	ASTM
1	1	Body (W/ Tag & Plug)	Ductile Iron	A-536	10	1	Spring	Stainless Steel	302
2	1	Cover	Ductile Iron	A-536	11	1	Spool*	Ductile Iron*	A-536
3	20	Cover Bolt	Stainless Steel	18-8	12	2	Spool O'Ring (Stem O'Ring)**	Buna-n**	-----
3B	20	Cover Washer	Stainless Steel	18-8	13	1	Spool Seal (Seat Seal)**	Buna-n**	-----
4	1	Cover Bushing*	Bronze*	B140-83	14	1	Seat Plate*	Unleaded Bronze*	C89833
5	2	Diaphragm Plate*	Ductile Iron*	A-536	15	1	Seat Ring*	Unleaded Bronze*	C89833
6	1	Diaphragm	Nitrile/Nylon	-----	15A	10	Seat Ring Cap Screws	Stainless Steel	18-8
8	1	Stem	Stainless Steel	304	16	1	Seat O'Ring**	Buna-n**	-----
9	2	Jam Nut	Stainless Steel	18-8	*OPTIONAL 316 STAINLESS STEEL AVAILABLE				
					**OPTIONAL VITON AVAILABLE				

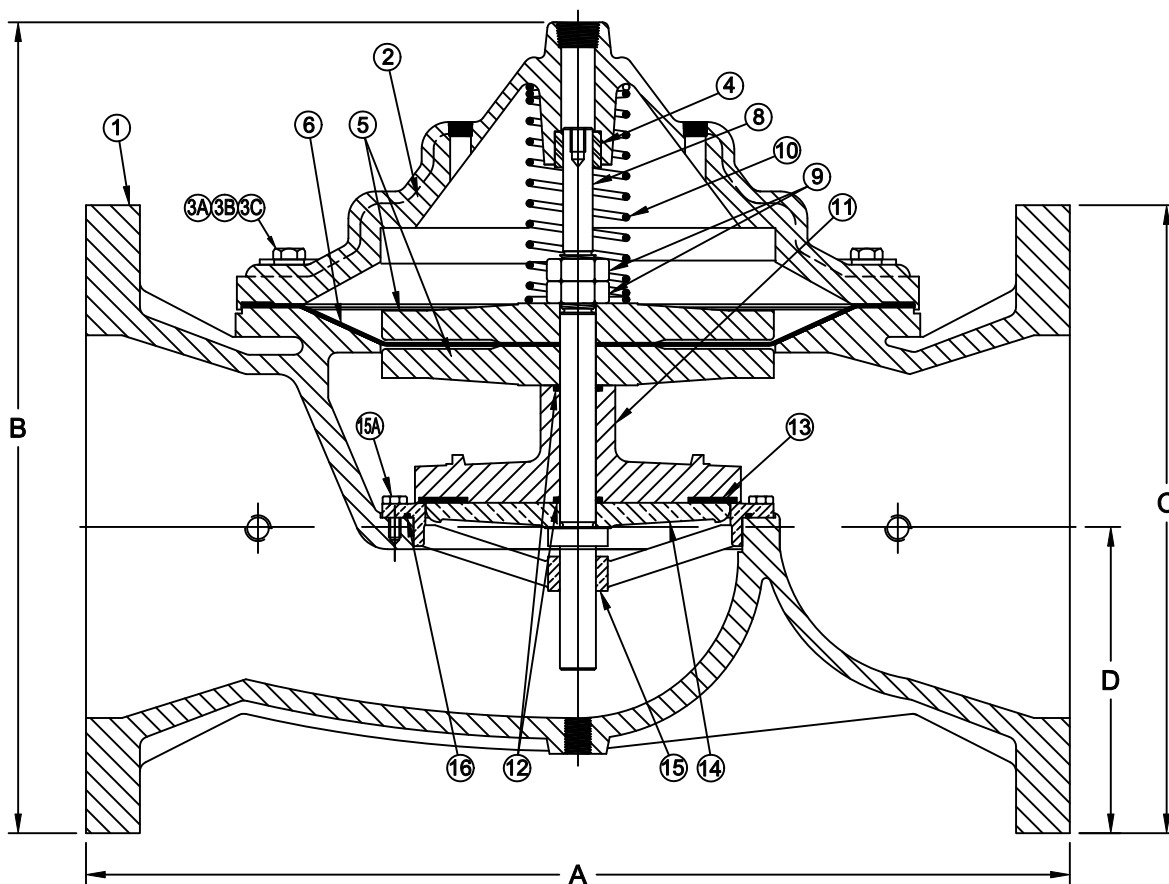
Dimensions

Size		Part #	A		B		C		D		Weight	
inch	mm		inch	mm	inch	mm	inch	mm	inch	mm	lbs	kg
12	300	8471312	30	762	26-13/32	671	18-3/4	476	9-1/4	235	900	409

Flomatic Corporation can accept no responsibility for possible errors in catalogues, brochures and other printed material. Flomatic Corporation reserves the right to alter its products without notices. This also applies to product already agreed. All trademarks in this material are property of the respective companies. All right reserved. ©2011 Flomatic Corporation. The drawings & information on this drawing sheet are the sole & exclusive property of Flomatic Corporation. Any reproduction, distribution, display or use of these drawings or information in whole or in part without written authorization of Flomatic Corporation is strictly prohibited.

FLOMATIC® VALVESAugust 19, 2003
Dwg No:S12rp125 Rev C (7/13)FLOMATIC CORPORATION
GLENS FALLS, N.Y. 12801
PHONE (518) 761-9797
FAX (518) 761-9798

Materials (Globe Style)



Max Temp 180°F (82°C)
Max Pressure 250psi (18bar)

Item #	Qty	Description	Material	ASTM	Item #	Qty	Description	Material	ASTM
1	1	Body (W/ Tag & Plug)	Ductile Iron	A-536	9	2	Jam Nut	Stainless Steel	18-8
2	1	Cover	Ductile Iron	A-536	10	1	Spring	Stainless Steel	302
3A	20	Cover Bolt	Stainless Steel	18-8	11	1	Spool*	Ductile Iron*	A-536
3B	20	Cover Washer	Stainless Steel	18-8	12	2	Spool O'Ring (Stem O'Ring)**	Buna-n**	-----
3C	20	Cover Washer	Stainless Steel	18-8	13	1	Spool Seal (Seat Seal)**	Buna-n**	-----
4	1	Cover Bushing*	Bronze*	B140-83	14	1	Seat Plate	Stainless Steel	316
5	2	Diaphragm Plate*	Ductile Iron*	A-536	15	1	Seat Ring	Stainless Steel	316
6	1	Diaphragm	Nitrile/Nylon	-----	15A	10	Seat Ring Cap Screws	Stainless Steel	18-8
8	1	Stem	Stainless Steel	304	16	1	Seat O'Ring**	Buna-n**	-----

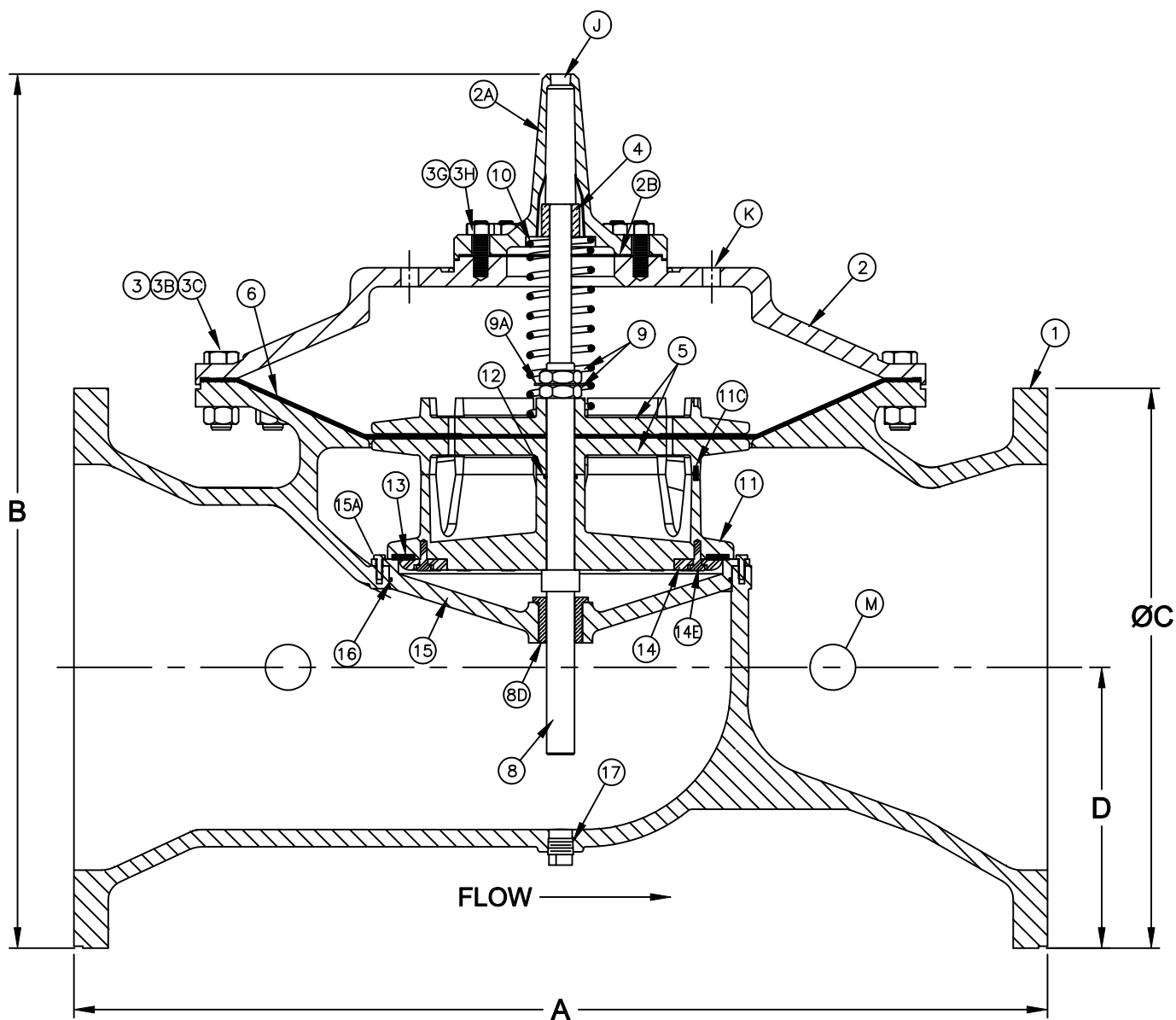
Dimensions

*OPTIONAL 316 STAINLESS STEEL AVAILABLE
**OPTIONAL VITON AVAILABLE

Size		Part #	A		B		C		D		Weight	
inch	mm		inch	mm	inch	mm	inch	mm	inch	mm	lbs	kg
16	400	8471316	35	889	30-1/2	775	23-1/4	591	11-1/2	292	1151	522

Flomatic Corporation can accept no responsibility for possible errors in catalogues, brochures and other printed material. Flomatic Corporation reserves the right to alter its products without notices. This also applies to product already agreed. All trademarks in this material are property of the respective companies. All right reserved. ©2011 Flomatic Corporation. The drawings & information on this drawing sheet are the sole & exclusive property of Flomatic Corporation. Any reproduction, distribution, display or use of these drawings or information in whole or in part without written authorization of Flomatic Corporation is strictly prohibited.

Materials (Globe Style)



Dimensions & Weight

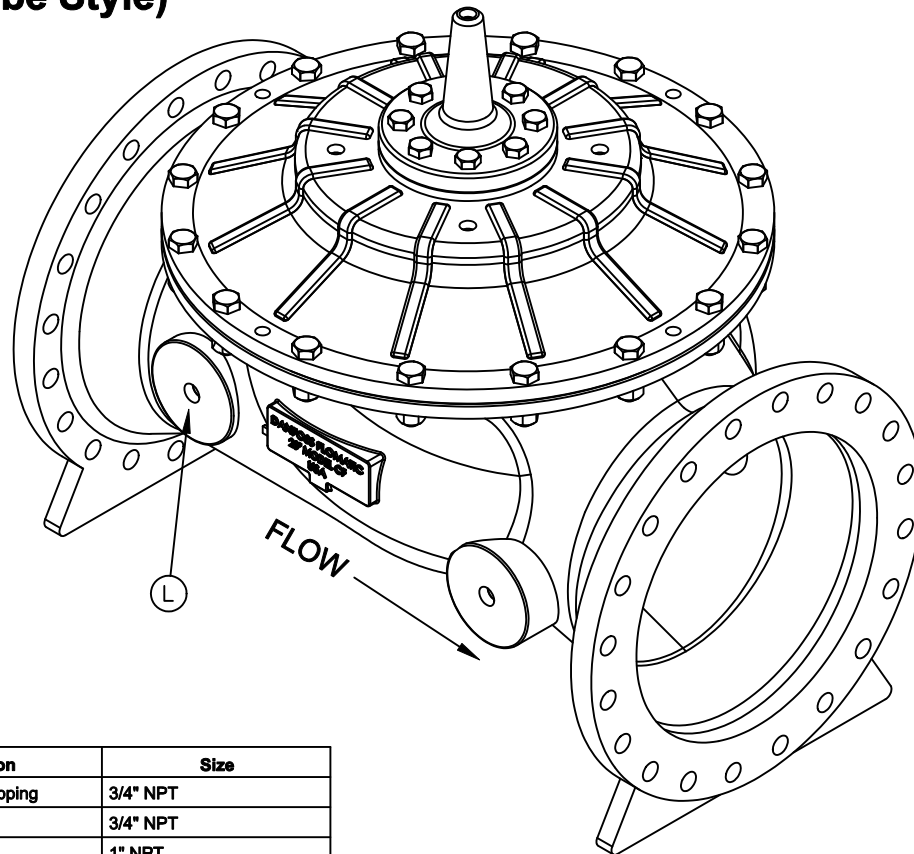
Max Temp 180°F (82°C)
Max Pressure 250psi (18bar)

Flange Standard:
ASME/ANSI B16.42

Size		Part #	A		B		ØC		D		Weight	
Inch	mm		Inch	mm	Inch	mm	Inch	mm	Inch	mm	lbs	kg
20	500	8471320	48	1219	43	1092	27-1/2	699	13-25/32	350	1925	873

Flomatic Corporation can accept no responsibility for possible errors in catalogues, brochures and other printed material. Flomatic Corporation reserves the right to alter its products without notices. This also applies to product already agreed. All trademarks in this material are property of the respective companies. All right reserved. ©2011 Flomatic Corporation. The drawings & information on this drawing sheet are the sole & exclusive property of Flomatic Corporation. Any reproduction, distribution, display or use of these drawings or information in whole or in part without written authorization of Flomatic Corporation is strictly prohibited.

Materials (Globe Style)



Control Connections

Item	Qty	Description	Size
J	1	Cover Center Tapping	3/4" NPT
K	4	Cover Tapping	3/4" NPT
L	2	Body Tapping	1" NPT
M	2	Backside Flange Tapping	2" ASME/ANSI B16.42 300#

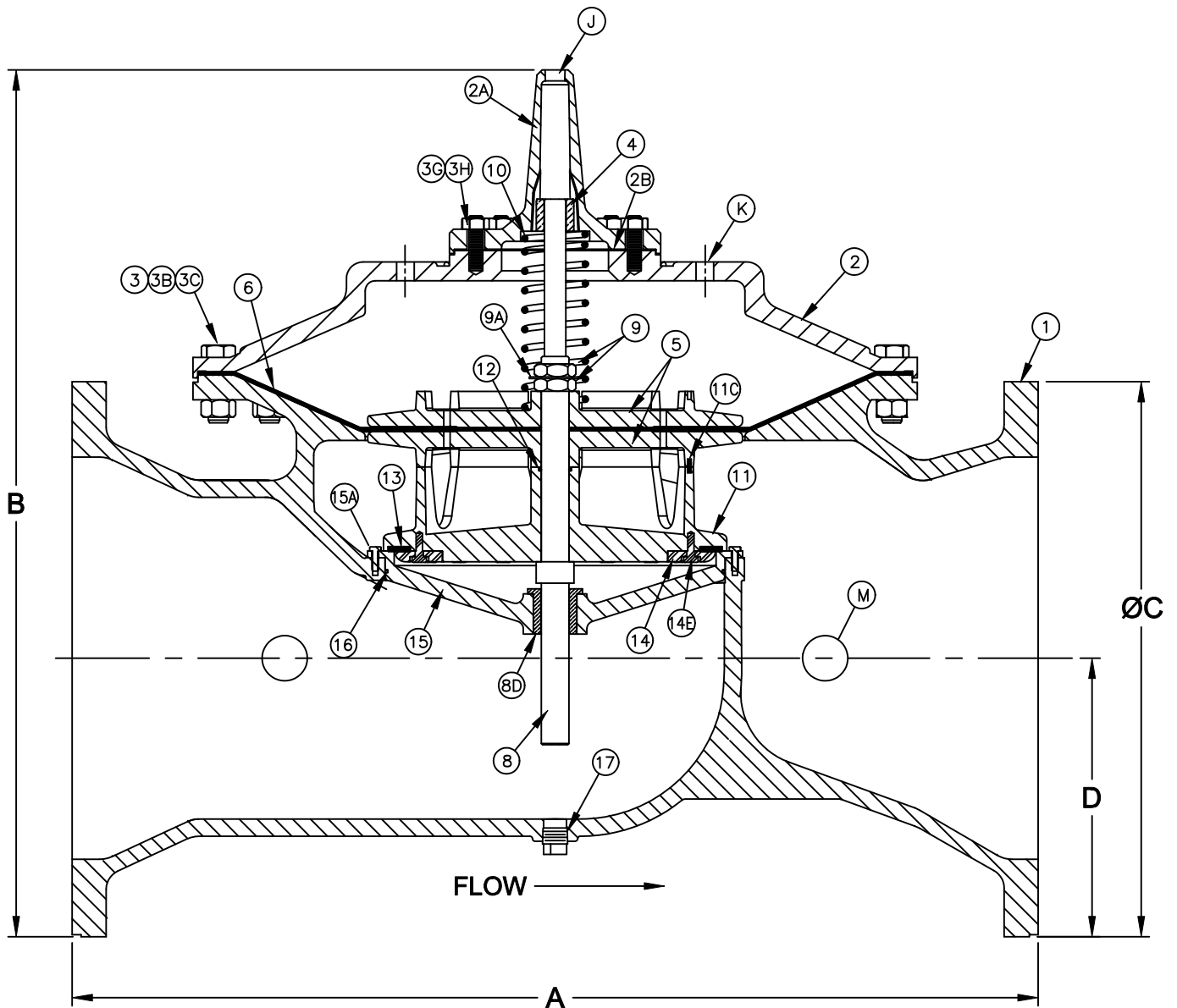
Items 18-22 Not Shown

Item #	Qty	Description	Material	ASTM	Item #	Qty	Description	Material	ASTM
1	1	Body	Ductile Iron	A536	10	1	Spring	Stainless Steel	302
2	1	Cover	Ductile Iron	A536	11	1	Spool	Ductile Iron	A536
2A	1	Top Bearing Cover	Ductile Iron	A536	11C	1	Spool Dowel Pin	Stainless Steel	18-8
2B	1	Top Bearing Cover Gasket	Velumoid	—	12	1	Spool O'Ring (Stem O'Ring)	Buna-N**	—
3	16	Cover Bolt	Stainless Steel	304	13	1	Spool Seal (Seat Seal)	Buna-N**	—
3B	32	Cover Washer	Stainless Steel	304	14	1	Seat Plate	Stainless Steel	316
3C	16	Cover Nut	Stainless Steel	304	14E	16	Seat Plate Bolts	Stainless Steel	304
3G	8	Top Bearing Cover Studs	Stainless Steel	304	15	1	Seat Ring	Stainless Steel	316
3H	8	Top Bearing Cover Nuts	Stainless Steel	304	15A	16	Seat Ring Cap Screws	Stainless Steel	304
4	1	Cover Bushing	Bronze	B140	16	1	Seat O'Ring**	Buna-N**	—
5	2	Diaphragm Plate	Ductile Iron	A536	17	1	Pipe Plug	Steel	—
6	1	Diaphragm (Reinforced)	SBR/Polyester	—	18	1	Serial Number Tag	Brass	—
8	1	Stem	Stainless Steel	304	19	2	Grip Nails	Steel	—
8D	1	Stem Bushing	Bronze	B140	20	2	Flange (2" 300#)	Ductile Iron	A536
9	2	Jam Nut	Stainless Steel	304	21	2	Flange Gasket	Velumoid	—
9A	1	Jam Nut Locking Washer	Stainless Steel	304	22	16	Flange Bolt	Stainless Steel	304

**OPTIONAL EPDM AVAILABLE

Flomatic Corporation can accept no responsibility for possible errors in catalogues, brochures and other printed material. Flomatic Corporation reserves the right to alter its products without notices. This also applies to product already agreed. All trademarks in this material are property of the respective companies. All right reserved. ©2011 Flomatic Corporation. The drawings & information on this drawing sheet are the sole & exclusive property of Flomatic Corporation. Any reproduction, distribution, display or use of these drawings or information in whole or in part without written authorization of Flomatic Corporation is strictly prohibited.

Materials (Globe Style)



Dimensions & Weight

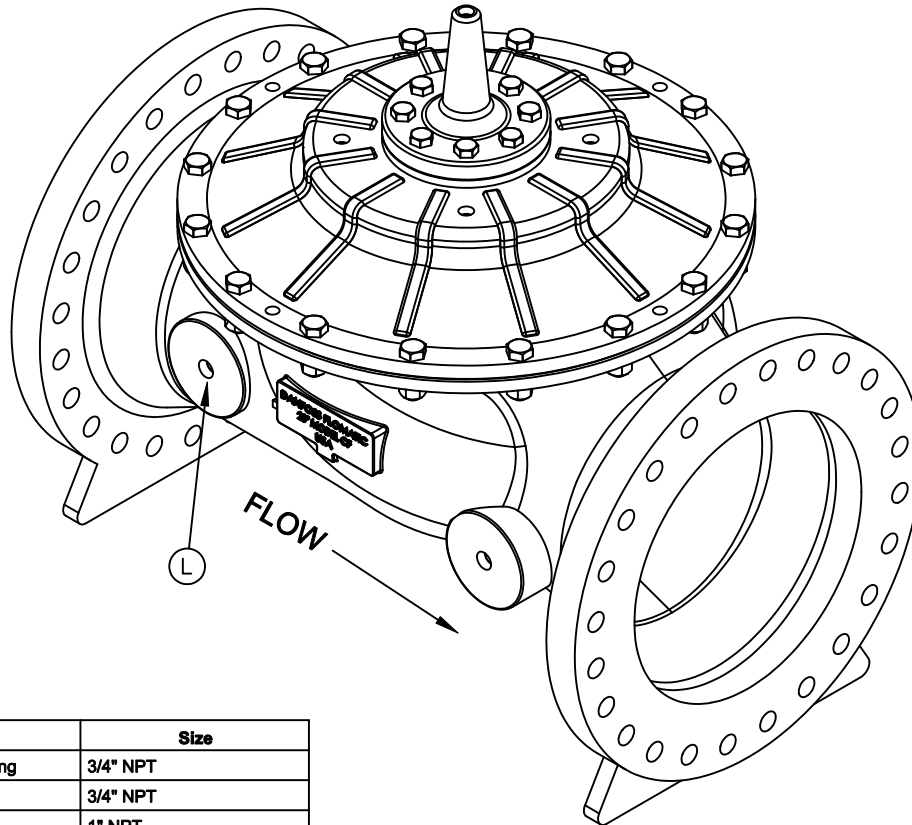
Max Temp 180°F (82°C)
Max Pressure 400psi (28bar)

Flange Standard:
ASME/ANSI B16.42

Size		Part #	A		B		ØC		D		Weight	
Inch	mm		Inch	mm	Inch	mm	Inch	mm	Inch	mm	lbs	kg
20	500	8472820	49-5/8	1260	44-1/2	1130	30-1/2	775	15-9/32	388	2200	998

Flomatic Corporation can accept no responsibility for possible errors in catalogues, brochures and other printed material. Flomatic Corporation reserves the right to alter its products without notices. This also applies to product already agreed. All trademarks in this material are property of the respective companies. All right reserved. ©2011 Flomatic Corporation. The drawings & information on this drawing sheet are the sole & exclusive property of Flomatic Corporation. Any reproduction, distribution, display or use of these drawings or information in whole or in part without written authorization of Flomatic Corporation is strictly prohibited.

Materials (Globe Style)



Control Connections

Item	Qty	Description	Size
J	1	Cover Center Tapping	3/4" NPT
K	4	Cover Tapping	3/4" NPT
L	2	Body Tapping	1" NPT
M	2	Backside Flange Tapping	2" ASME/ANSI B16.42 300#

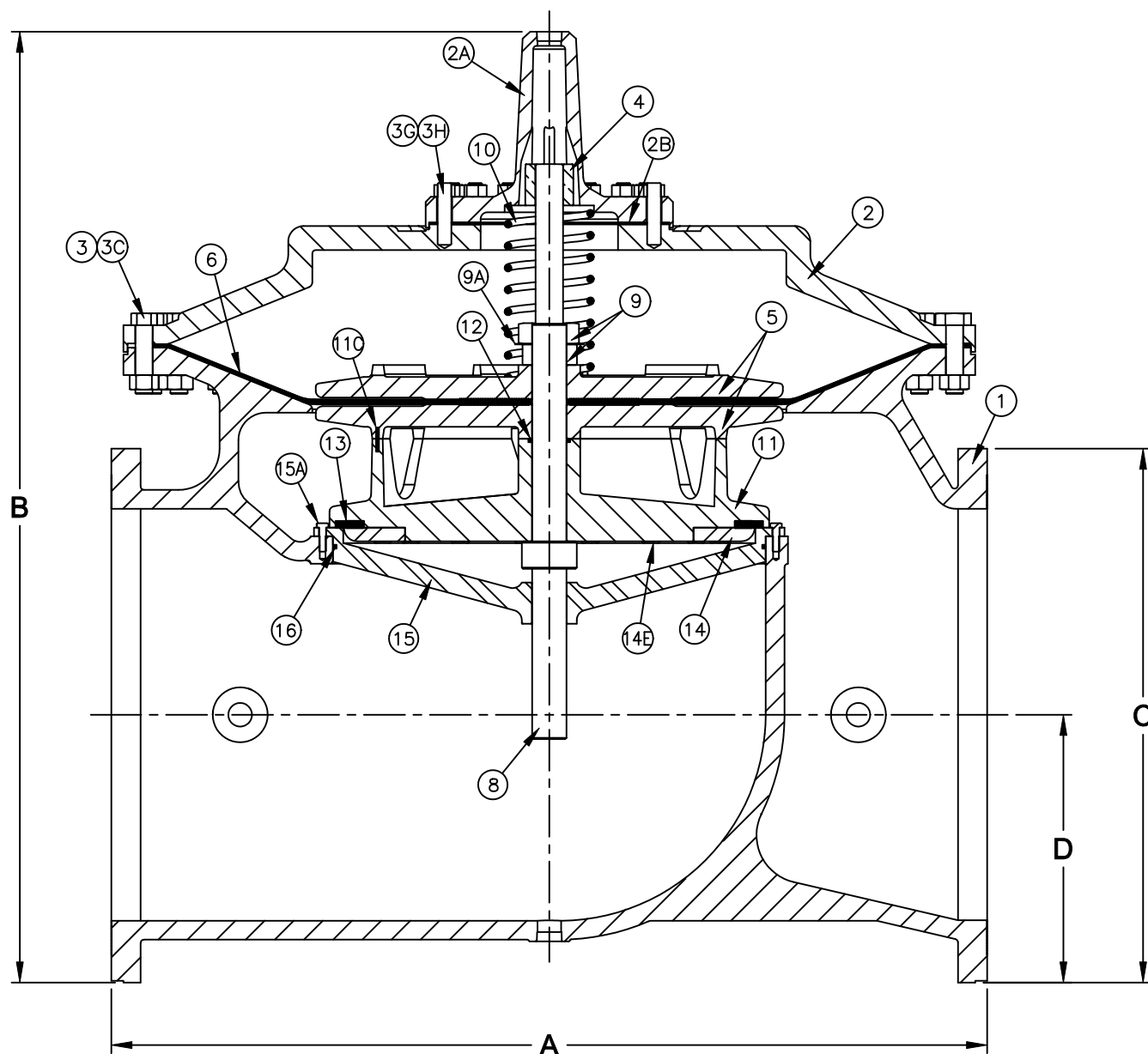
Items 18-22 Not Shown

Item #	Qty	Description	Material	ASTM	Item #	Qty	Description	Material	ASTM
1	1	Body	Ductile Iron	A536	10	1	Spring	Stainless Steel	302
2	1	Cover	Ductile Iron	A536	11	1	Spool	Ductile Iron	A536
2A	1	Top Bearing Cover	Ductile Iron	A536	11C	1	Spool Dowel Pin	Stainless Steel	18-8
2B	1	Top Bearing Cover Gasket	Velumoid	—	12	1	Spool O'Ring (Stem O'Ring)	Buna-N**	—
3	16	Cover Bolt	Stainless Steel	304	13	1	Spool Seal (Seat Seal)	Buna-N**	—
3B	32	Cover Washer	Stainless Steel	304	14	1	Seat Plate	Stainless Steel	316
3C	16	Cover Nut	Stainless Steel	304	14E	16	Seat Plate Bolts	Stainless Steel	304
3G	8	Top Bearing Cover Studs	Stainless Steel	304	15	1	Seat Ring	Stainless Steel	316
3H	8	Top Bearing Cover Nuts	Stainless Steel	304	15A	16	Seat Ring Cap Screws	Stainless Steel	304
4	1	Cover Bushing	Bronze	B140	16	1	Seat O'Ring**	Buna-N**	—
5	2	Diaphragm Plate	Ductile Iron	A536	17	1	Pipe Plug	Steel	—
6	1	Diaphragm (Reinforced)	SBR/Polyester	—	18	1	Serial Number Tag	Brass	—
8	1	Stem	Stainless Steel	304	19	2	Grip Nails	Steel	—
8D	1	Stem Bushing	Bronze	B140	20	2	Flange (2" 300#)	Ductile Iron	A536
9	2	Jam Nut	Stainless Steel	304	21	2	Flange Gasket	Velumoid	—
9A	1	Jam Nut Locking Washer	Stainless Steel	304	22	16	Flange Bolt	Stainless Steel	304

**OPTIONAL EPDM AVAILABLE

Flomatic Corporation can accept no responsibility for possible errors in catalogues, brochures and other printed material. Flomatic Corporation reserves the right to alter its products without notices. This also applies to product already agreed. All trademarks in this material are property of the respective companies. All right reserved. ©2011 Flomatic Corporation. The drawings & information on this drawing sheet are the sole & exclusive property of Flomatic Corporation. Any reproduction, distribution, display or use of these drawings or information in whole or in part without written authorization of Flomatic Corporation is strictly prohibited.

Materials (Globe Style)



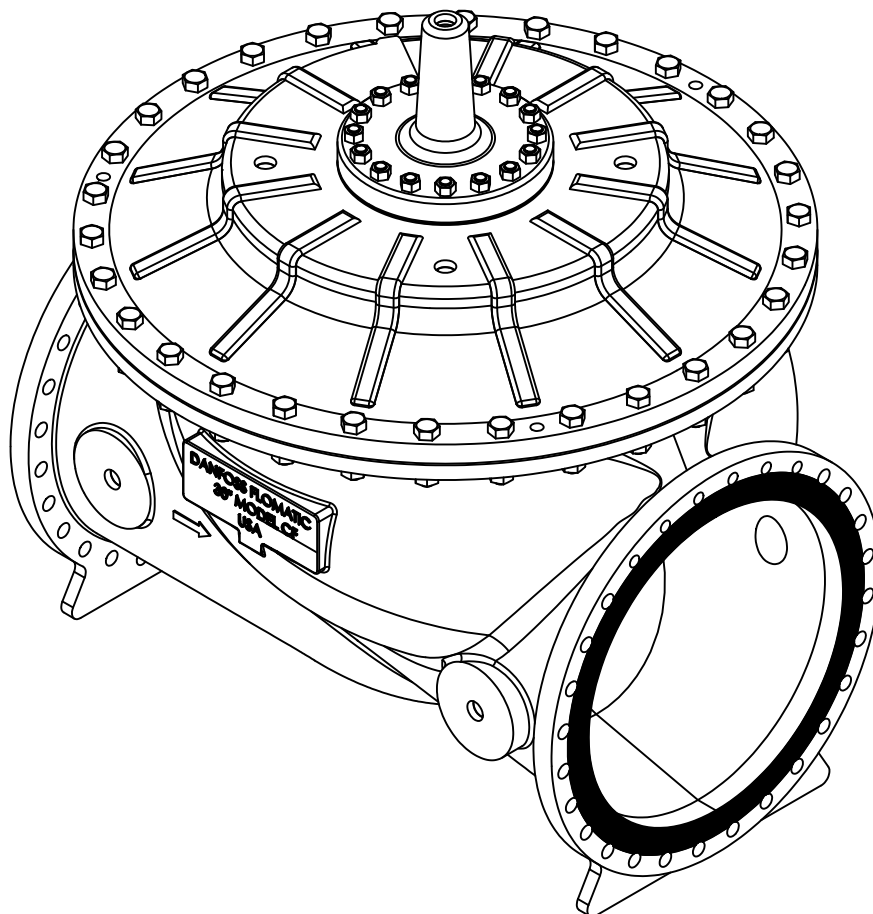
Dimensions

Max Temp 180°F (82°C)
Max Pressure 250psi (18bar)

Size		Part #	A		B		C		D		Weight	
inch	mm		inch	mm	inch	mm	inch	mm	inch	mm	lbs	kg
36	900	8471336	76	1930	73-3/4	1873	47	1194	24	610	8275	3754

Flomatic Corporation can accept no responsibility for possible errors in catalogues, brochures and other printed material. Flomatic Corporation reserves the right to alter its products without notices. This also applies to product already agreed. All trademarks in this material are property of the respective companies. All right reserved. ©2011 Flomatic Corporation. The drawings & information on this drawing sheet are the sole & exclusive property of Flomatic Corporation. Any reproduction, distribution, display or use of these drawings or information in whole or in part without written authorization of Flomatic Corporation is strictly prohibited.

Materials (Globe Style)



Items 20-22 Not Shown

Item #	Qty	Description	Material	ASTM	Item #	Qty	Description	Material	ASTM
1	1	Body (W/ Tag & Plug)	Ductile Iron	A-536	10	1	Spring	Stainless Steel	302
2	1	Cover	Ductile Iron	A-536	11	1	Spool*	Ductile Iron*	A-536
2A	1	Top Bearing Cover	Ductile Iron	A-536	11C	1	Spool Dowel Pin	Stainless Steel	18-8
2B	1	Top Bearing Cover Gasket	Velumoid	—	12	1	Spool O'Ring (Stem O'Ring)**	Buna-n**	—
3	30	Cover Bolt	Stainless Steel	304	13	1	Spool Seal (Seat Seal)**	Buna-n**	—
3C	30	Cover Nut	Stainless Steel	304	14	1	Seat Plate	Stainless Steel	316
3G	16	Top Bearing Cover Studs	Stainless Steel	304	14E	16	Seat Plate Bolts	Stainless Steel	304
3H	16	Top Bearing Cover Nuts	Stainless Steel	304	15	1	Seat Ring	Stainless Steel	316
4	1	Cover Bushing*	Bronze*	B140-83	15A	16	Seat Ring Cap Screws	Stainless Steel	304
5	2	Diaphragm Plate*	Ductile Iron*	A-536	16	1	Seat O'Ring**	Buna-n**	—
6	1	Diaphragm	Nitrile/Nylon	—	20	2	Flange	Cast Iron	—
8	1	Stem	Stainless Steel	304	21	2	Flange Gasket	Velumoid	—
9	2	Jam Nut	Stainless Steel	304	22	16	Flange Bolt	Stainless Steel	18-8
9A	1	Jam Nut Locking Washer	Stainless Steel	304	*OPTIONAL 316 STAINLESS STEEL AVAILABLE				
					**OPTIONAL VITON AVAILABLE				

Flomatic Corporation can accept no responsibility for possible errors in catalogues, brochures and other printed material. Flomatic Corporation reserves the right to alter its products without notices. This also applies to product already agreed. All trademarks in this material are property of the respective companies. All right reserved. ©2011 Flomatic Corporation. The drawings & information on this drawing sheet are the sole & exclusive property of Flomatic Corporation. Any reproduction, distribution, display or use of these drawings or information in whole or in part without written authorization of Flomatic Corporation is strictly prohibited.