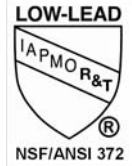


Foot Valve

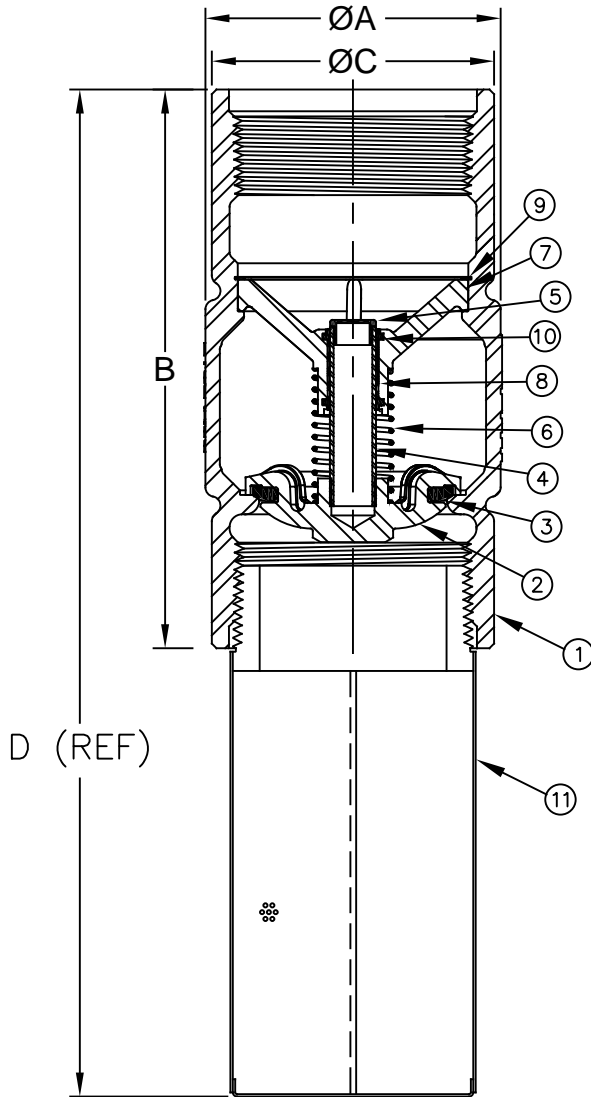
Model 80S6F-VFD



Sizes 2" thru 8" / 50mm thru 200mm



Material



Max Temp 180°F (82°C)
Max Pressure 400psi (28bar)

Item #	Qty	Description	Material	ASTM
1	1	Body	Stainless Steel	316
2	1	Poppet	Stainless Steel	316
3	1	Seat Disc	Buna-N	N-5007*
4	1	Stem	Stainless Steel	316
5	1	Stem Cap**	Engineered Composite	-----
6	1	Spring	Stainless Steel	304
7	1	Stem Guide	Stainless Steel	316
8	1	Bushing	Engineered Composite	-----
9	1	Retaining Ring	Stainless Steel	302
10	2	Wiper	Engineered Composite	Molythane
11	1	Screen	Stainless Steel	316

Dimensions (FNPT)

*8" uses N-6010
** Not Used on 2"

Size		Part #	ØA		B		ØC		D (REF)		Weight	
inch	mm		inch	mm	inch	mm	inch	mm	inch	mm	lbs	kg
2	50	4034S6FVFD	3	76	5-5/32	131	2-7/8	73	11-1/2	292	6	2.7
2-1/2	65	7936S6FVFD	3-5/8	92	6-31/32	177	2-3/8	86	13-5/8	346	12	5.5
3	80	7938S6FVFD	4-3/8	111	8-37/64	218	4-13/64	107	15-29/64	393	15	6.8
4	100	7939S6FVFD	5-3/4	146	11-1/4	286	5-1/2	140	19-3/4	502	30	13.6
6	150	4089S6FVFD	8	203	15-9/64	385	7-21/32	194	22-3/4	578	75	34.1
8	200	4090XSSFVFD	9-11/16	246	15-27/32	402	9-11/16	246	25-3/4	654	105	47.6

Flomatic Corporation can accept no responsibility for possible errors in catalogues, brochures and other printed material. Flomatic Corporation reserves the right to alter its products without notices. This also applies to product already agreed. All trademarks in this material are property of the respective companies. All rights reserved. ©2019 Flomatic Corporation. The drawings & information on this drawing sheet are the sole & exclusive property of Flomatic Corporation. Any reproduction, distribution, display or use of these drawings or information in whole or in part without written authorization of Flomatic Corporation is strictly prohibited. www.flomatic.com



October 3, 2016
Dwg No: S4034-4090S6FVFD Rev: A (6/19)

FLOMATIC CORPORATION
GLENS FALLS, N.Y. 12801
PHONE (518) 761-9797
FAX (518) 761-9798