

Foot Valve

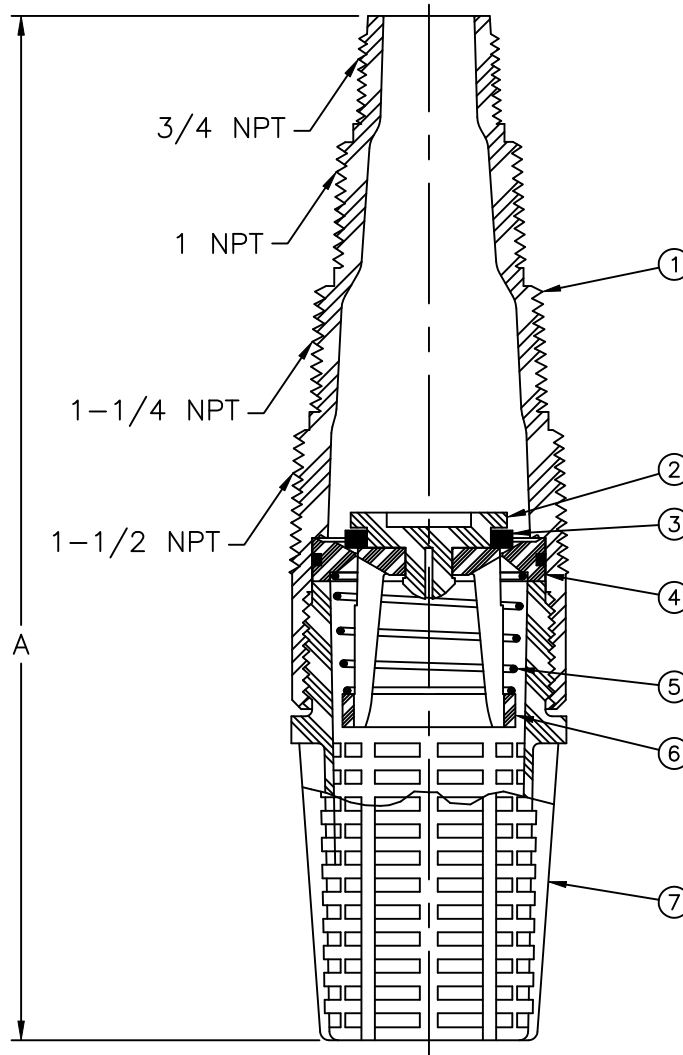
Model 124P



Flomatic Corporation

Sizes 3/4" Thru 1-1/2" / 20mm Thru 40mm

Materials



Open Area: 30-40%
 Max Temp 140°F (60°C)
 Max Pressure 150psi (10bar)

Item #	Qty	Description	Material	ASTM	Item #	Qty	Description	Material	ASTM
1	1	Body	Actel Celcon	-----	5	1	Spring	Stainless Steel	302
2	1	Stool Top	Texin	355	6	1	Stool	Texin	355
3	1	Washer	Neoprene	-----	7	1	Screen	Sctel Celcon	-----
4	1	Valve Seat	Texin	355					

Dimensions

Size		Part #	A		Weight	
inch	mm		inch	mm	lbs	kg
3/4 - 1-1/2	20 - 40	5728P	7	178	.25	.11

Flomatic Corporation can accept no responsibility for possible errors in catalogues, brochures and other printed material. Flomatic Corporation reserves the right to alter its products without notices. This also applies to product already agreed. All trademarks in this material are property of the respective companies. All right reserved. ©2011 Flomatic Corporation. The drawings & information on this drawing sheet are the sole & exclusive property of Flomatic Corporation. Any reproduction, distribution, display or use of these drawings or information in whole or in part without written authorization of Flomatic Corporation is strictly prohibited.



September 9, 1999
 Dwg No: S5728P Rev A (8/11)

FLOMATIC CORPORATION
 GLENS FALLS, N.Y. 12801
 PHONE (518) 761-9797
 FAX (518) 761-9798