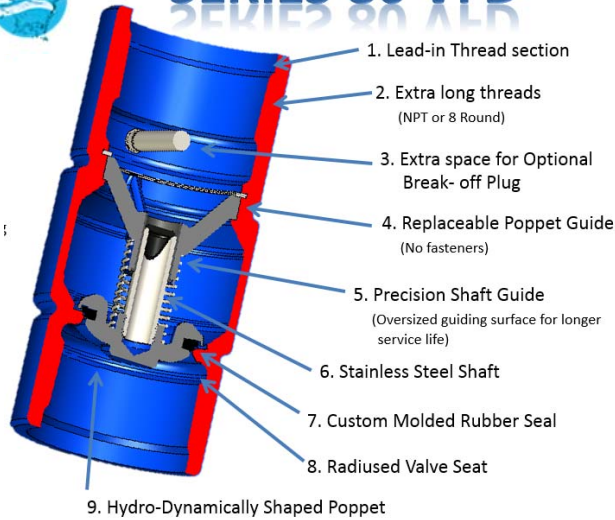




SERIES 80 VFD



Flomatic Submersible Pump Check Valve

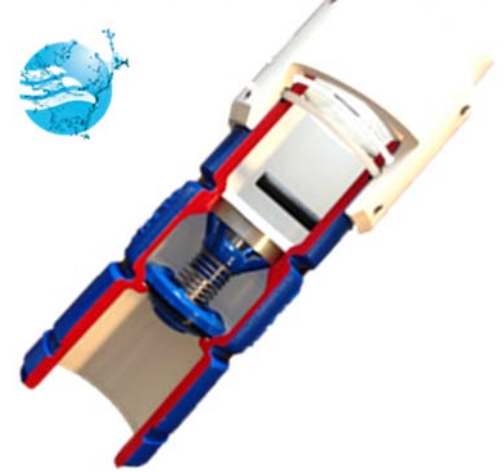
Better by Design!

Summary:

- ☑ **More Flow = Save \$**
(Higher Efficiencies)
- ☑ **Noiseless = Quiet operation**
(Longer Service Life)
- ☑ **Simple Construction = Higher Reliability**
(Less Parts)
- ☑ **VFD Compatible = Installation Flexible**
(Customer Friendly)

Who We Are

Flomatic has over 80 years' experience designing and manufacturing valve products from 1/4" thru 36", Check Valves, Automatic Control Valves, Butterfly Valves, Gate Valves, Air/Vacuum Valves. The Model 80E, DI & S6 VFD are designed to minimize flow losses and hydraulic shocks in the pumping system. The standard epoxy coated (NSF approved powder) ductile iron body is stronger than bronze or stainless steel design to support submersible pumps set deep in a well water casing. Its unique hydraulic custom molded Buna-N rubber sealing surfaces are supported by a mechanical back-up support to maximize the check valve service life. The patent pending spring loaded poppet system is guided in a generous seat bore. The unique poppet system insures that the valve automatically closes tight and noiseless after each pump cycle. The radii seat allows a self-cleaning "one point swiping action" by the radius-edged rubber seal disc during each valve closing cycle. All internal parts are made from corrosion resistant material.



Flomatic Model 80D1CL VFD

Flomatic Submersible Pump Check Valve Series "CL"

(Patented)

Series 80D1CL, 80MD1CL, 80S6CL and 80S6MCL

- Male NPT Thread to Certa-Lok® pipe restrained joints or
- Certa-Lok® by Certa-Lok® pipe restrained joints
- Variable Flow Rates (VFD Controlled Pumps)
- Well Water Pump Systems
- Municipal/Public Water Systems
- Irrigation and Sprinkler Systems
- 6 Different Sizes (2" thru 8") and four different Models in Ductile Iron or 316SS

"The most advanced Check Valve in the industry for Submersible Pumps"

**Note:

Certa-Lok® is a registered trademark with North American Specialty Products.



80DIMCL- Ductile iron check valve uses groove lock type pipe connection on outlet end, and male pipe thread for the inlet connection. Materials are the same as the 80DICL.

80DICL- Ductile iron check valve incorporates grooved locking type pipe connections called Certa-Lok®. Fusion epoxy coated inside and out including poppet assembly, this valve is corrosion resistant and unleaded. High strength ductile iron body with stainless steel spring and NITRILE (Buna-N) seal.

Also available in all 316SS, Model 80S6CL. See Page 8.



80S6MCL- Stainless steel check valve uses grooved locking type pipe connection on outlet end, and male pipe thread for the inlet connection. Materials are the same as the 80S6CL. Also available in ductile iron. See Page 6.

80S6CL- Stainless steel check valve incorporates grooved locking type pipe connections called Certa-Lok®. Stainless steel inside and out including poppet assembly. High strength stainless steel body and spring with a NITRILE (Buna-N) seal. Also available in ductile iron. See Page 6.

See us on You Tube: "Flomatic VFD"

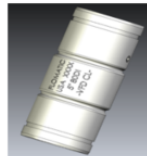


Several Different Models and sizes from 2" thru 8" Ductile Iron or 316 SS



Model 80DICL VFD (DI, Certainteed Groove by Groove) Disc. Code: A Page: 6

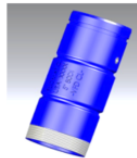
Size	Part Number	First ship date	List price
2"	7937CLVFD	Apr-16	\$316.25
3"	7938CLVFD	In Stock	\$438.15
4"	7939CLVFD	In Stock	\$598.00
6"	4088CLVFD	In Stock	\$1,000.50
6"	4089CLVFD	In Stock	\$2,006.75
8"	4090CLVFD	In Stock	\$2,672.60



Model 80S6CL VFD (316SS, Certainteed Groove by Groove) Disc. Code: A See foot note on page 8

Size	Part Number	First ship date	List price
2"	7937S6CLVFD	Apr-16	\$795.60
3"	7938S6CLVFD	In Stock	\$1,003.20
4"	7939S6CLVFD	In Stock	\$1,100.40
6"	4088S6CLVFD	In Stock	\$2,158.80
6"	4089S6CLVFD	In Stock	\$4,200.00
8"	4090S6CLVFD	In Stock	\$5,612.46

Note: First ship dates are subject to change without notice.



Model 80MDICL VFD (DI, Male NPT by Certainteed Groove) Disc. Code: A Page: 6

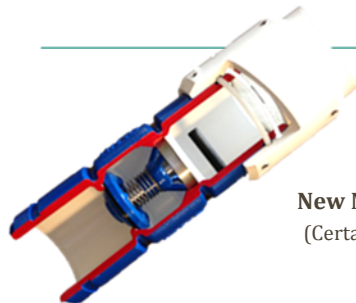
Size	Part Number	First ship date	Est. List price
2"	7937MCLVFD	Apr-16	\$280.00
3"	7938MCLVFD	In Stock	\$376.00
4"	7939MCLVFD	In Stock	\$549.00
6"	4088MCLVFD	In Stock	\$876.00
6"	4089MCLVFD	In Stock	\$1,770.00
8"	4090MCLVFD	In Stock	\$2,351.89



Model 80S6MCL VFD (316SS, Male NPT by Certainteed Groove) Disc. Code: A Page: 8

Size	Part Number	First ship date	Est. List price
2"	7937MS6CL	Apr-16	\$826.80
3"	7938S6MCL	In Stock	\$1,011.60
4"	7939S6MCL	In Stock	\$1,110.12
6"	4088S6MCL	In Stock	\$2,224.80
6"	4089S6MCL	In Stock	\$4,273.20
8"	4090S6MCL	In Stock	\$5,612.46

The most advanced Check Valve in the industry for Submersible Pumps



New Model 80DICL VFD
(Certa-Lok™ also in 316SS)



Industry First Energy Efficient VFD Designed Check Valve

"Certa-Lok** pipe restrained joints are in the field in all 50 states and more than 25 countries worldwide – connecting 900 million feet of PVC pipe in both above- and below-ground applications" – and serve as the centerpiece of North American Specialty Products LLC's specialty PVC pipe product offering.

LEAD FREE



THE SERIES 80DI VFD CHECK VALVES CONFORMS TO NSF 372 CERTIFIED, THE "CALIFORNIA LEAD PLUMBING LAW" OR "COMPLIES WITH CALIFORNIA LEAD PLUMBING LAW" AND VERMONT STATE CERTIFIED TO IAPMO R&T CERTIFICATION MARK AND THE UNIFORM PLUMBING CODE.

High Quality Valves Built to Last . . .

**Note:

Certa-Lok® is a registered trademark with North American Specialty Products.