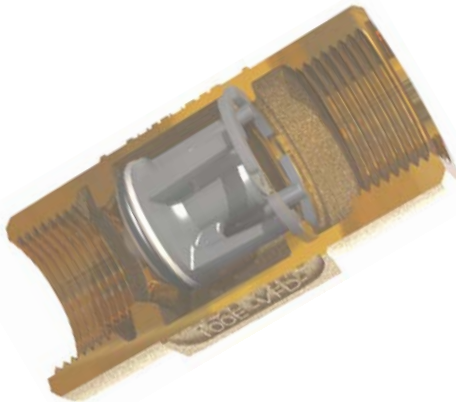


Flomatic Pump Check Valve (Patented and Patent Pending) Model 80E & 100E VFD

Delivers Longer Service Life

- Variable Flow Rates (VFD Controlled Pumps)
- Lower Friction Losses
- Quiet Operation
- Well Water Pump Systems
- Irrigation and Sprinkler Systems
- Both Vertical or Horizontal Installation
- Size range 1" thru 4"



Flomatic Check Valve
Model 100E VFD
(Patented and other Patent Pending)

**Industry First Energy
Efficient VFD Designed
Check Valve**
(Patented and other Patent Pending)

Materials

- **Valve body:** Lead Free Bronze
- **Valve Disc:** SS (Delrin optional)
- **Follower:** Composite and SS larger sizes
- **Elastomer Disc:** Buna Nitrile (FDA approved)
- **Spring:** 316 Stainless Steel

Lead Free

The Model 80E VFD and 100E VFD Check Valves conforms to the "California Lead Plumbing Law" or "Complies with California Lead Plumbing Law" and Vermont State certified to IAPMO R&T certification mark and the Uniform Plumbing Code.





Flomatic Submersible Pump Check Valve

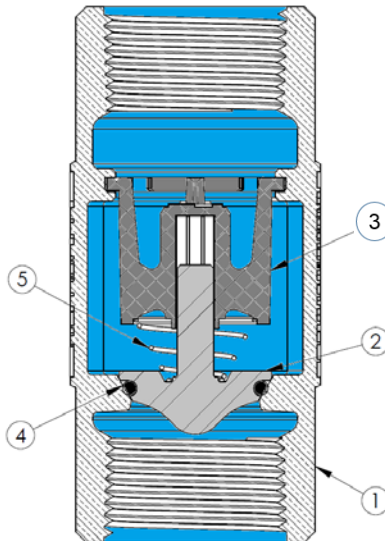
Model 80E VFD and 100E VFD

(Patented and other Patents Pending)



Valve Operation

Flomatic has 80 years' experience designing and manufacturing valve products. The new Model 80E & 100E VFD like, the Model 80DI/SS VFD is designed to minimize flow loss and hydraulic shocks in the pumping system. The standard unleaded bronze body or optional Stainless Steel or epoxy coated (NSF approved powder) ductile iron body designed to support submersible pumps set deep in a well water casing. Its unique hydraulic custom molded Buna-N rubber sealing surfaces are supported by a mechanical back-up support to maximize the check valve service life. The patented spring loaded poppet system is guided in a generous seat bore. The unique poppet system insures that the valve automatically closes tight and noiseless after each pump cycle. The tapered seat allows a self-cleaning "one point swiping action" by the radius-edged rubber seal during each valve closing cycle. All internal parts are made from corrosion resistant material.



Item No.	Description	Material	ASTM
1	Body	Copper Bismuth Alloy	C89833
2	Poppet	304 Stainless Steel	UNS S30400
3	Guide	Delrin 100	----
4	Seat O-Ring	Buna-N	----
5	Spring	302 Stainless Steel	A313

Model 80E & 100E VFD

(ENVIRO Un-Leaded , Female by Female)

Disc. Code: A
Page: 3 in Catalog

Size	Part Number	First ship date	List price
1"	4031EVFD	Oct-15	\$ 56.12
1 1/4"	4032EVFD	Oct-15	\$ 79.02
1 1/2"	4033E VFD	Oct-15	\$ 110.84
2"	4034E VFD	In Stock	\$ 176.58
2 1/2"	4035E VFD	Oct-15	\$ 738.82
3"	4036E VFD	Complete	\$ 890.33
4"	4037E VFD	Complete	\$ 1,547.90

Model 100E VFD

(ENVIRO Un-Leaded , Female by Female)

Page: 3

Size	Part Number	First ship date	List price
1"	4201E VFD	Complete	\$ 53.28
1 1/4"	4202E VFD	Oct-15	\$ 73.02

Product Specification

- Connection: 1" thru 4" NPT (Optional Thread types available)
- Max pressure: 400 PSI (27 bar)
- Max temperature: 180°F (80°C)

Additional Sizes, Models will be available in 2015
www.flomatic.com

Product Warranty

- Flomatic standard 5 year standard valve product warranty applies. See condensed catalog and price list with detailed warranty information.

FLOMATIC VALVES

High Quality Valves Built to Last . . .

Flomatic is a proud member of:



15 Prun's Island Drive, Glens Falls, New York 12801-4424
Phone: 1-800-833-2040 Fax: 518-791-9798

www.flomatic.com

