



## Flomatic Pump Check Valve

(Patented)

### Model 80EVFD & 100EVFD

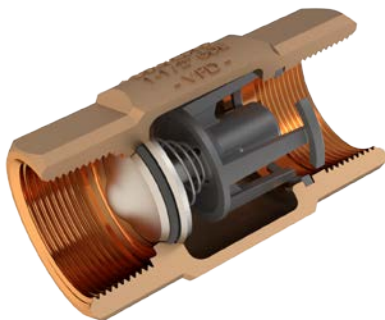
Complete Product range!

### Delivers Longer Service Life

- **Variable Flow Rates** (VFD Controlled Pumps)
- **Lower Friction Losses** (More Flow)
- **Noiseless Operation** (Quiet)
- **Well Water Pump Systems**
- **Irrigation and Sprinkler Systems**
- **Both Vertical or Horizontal Installation**
- **Size range 1" thru 4"** (Unleaded Bronze, SS or Ductile Iron)



**Industry First Energy Efficient  
VFD Designed Check Valve**  
(Patented)



Flomatic Check Valve  
Model 100EVFD  
(Shown with Optional SS-Poppet)



Optional Material: Stainless Steel VFD  
and Ductile Iron VFD Check Valves  
(Shown with Optional SS-Poppet)



### Materials

- **Valve body:** Lead Free Bronze
- **Valve Disc:** Engineering Acetal (SS optional)
- **Follower:** Composite and in SS larger sizes
- **Elastomer Disc:** Buna Nitrile (FDA approved)
- **Spring:** 316 Stainless Steel

### Lead Free

The Model 80EVFD and 100EVFD Check Valves conforms to the "California Lead Plumbing Law" or "Complies with California Lead Plumbing Law" and Vermont State certified to IAPMO R&T certification mark, NSF/ANSI 61 and the Uniform Plumbing Code.



# Flomatic Check Valves

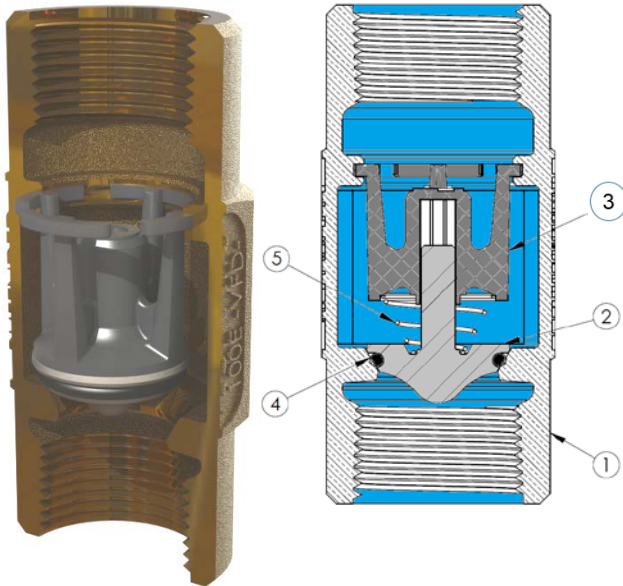
## Model 80EVFD and 100EVFD

(Patented)



### Valve Operation

Flomatic has 85 years' experience designing and manufacturing valve products. The new Model 80EVFD & 100EVFD, like the Model 80DI/SS VFD, are designed to minimize flow loss and hydraulic shocks in the pumping system. The standard unleaded bronze body or optional Stainless Steel or epoxy coated (NSF approved powder) ductile iron body are designed to support submersible pumps set deep in a well-water casing. Its unique hydraulic custom molded Buna-N rubber sealing surfaces are supported by a mechanical back-up support to maximize the check valve service life. The patented spring loaded poppet system is guided in a generous seat bore. The unique patented poppet system (all Stainless Steel in larger sizes and optional in the smaller sizes) insures that the valve is noiseless during operation and automatically closes tight after each pump cycle. The tapered seat allows a self-cleaning "one point swiping action" by the radius-edged rubber seal during each valve closing cycle. All internal parts are made from corrosion resistant material.



Item No.	Description	Material	ASTM
1	Body	Unleaded Bronze	C89833
2	Poppet	Engineering Composit Material, Optional 304 Stainless Steel	UNS S30400
3	Guide	Delrin 100	---
4	Seat O-Ring	Buna-N	---
5	Spring	302 Stainless Steel	A313

### Product Specification

- Connection: 1" thru 4" NPT (Optional Thread types available)
- Max pressure: 400 PSI (27 bar) Max temperature: 180°F (80°C)
- Optional Stainless Steel VFD and Ductile Iron VFD Check Valves

### Product Warranty

- Flomatic ENVIRO VFD Check Valves 5 year valve product warranty applies. See condensed catalog and price list with detailed warranty information.

### Larger Sizes VFD Check Valves 2" thru 10"

#### Submersible Pump Check Valves Series 80 VFD

Model 80S6 VFD  
(316SS)

Model 80DI VFD  
(Ductile Iron)

Model 80E VFD  
(Unleaded Bronze)

**Summary:**

- More Flow = Save \$ (Higher Efficiencies)
- Noiseless = Quiet operation (Longer Service Life)
- Simple Construction = Higher Reliability (Less Parts)
- VFD Compatible = Installation Flexible (Customer Friendly)

Flomatic is a proud member of:

