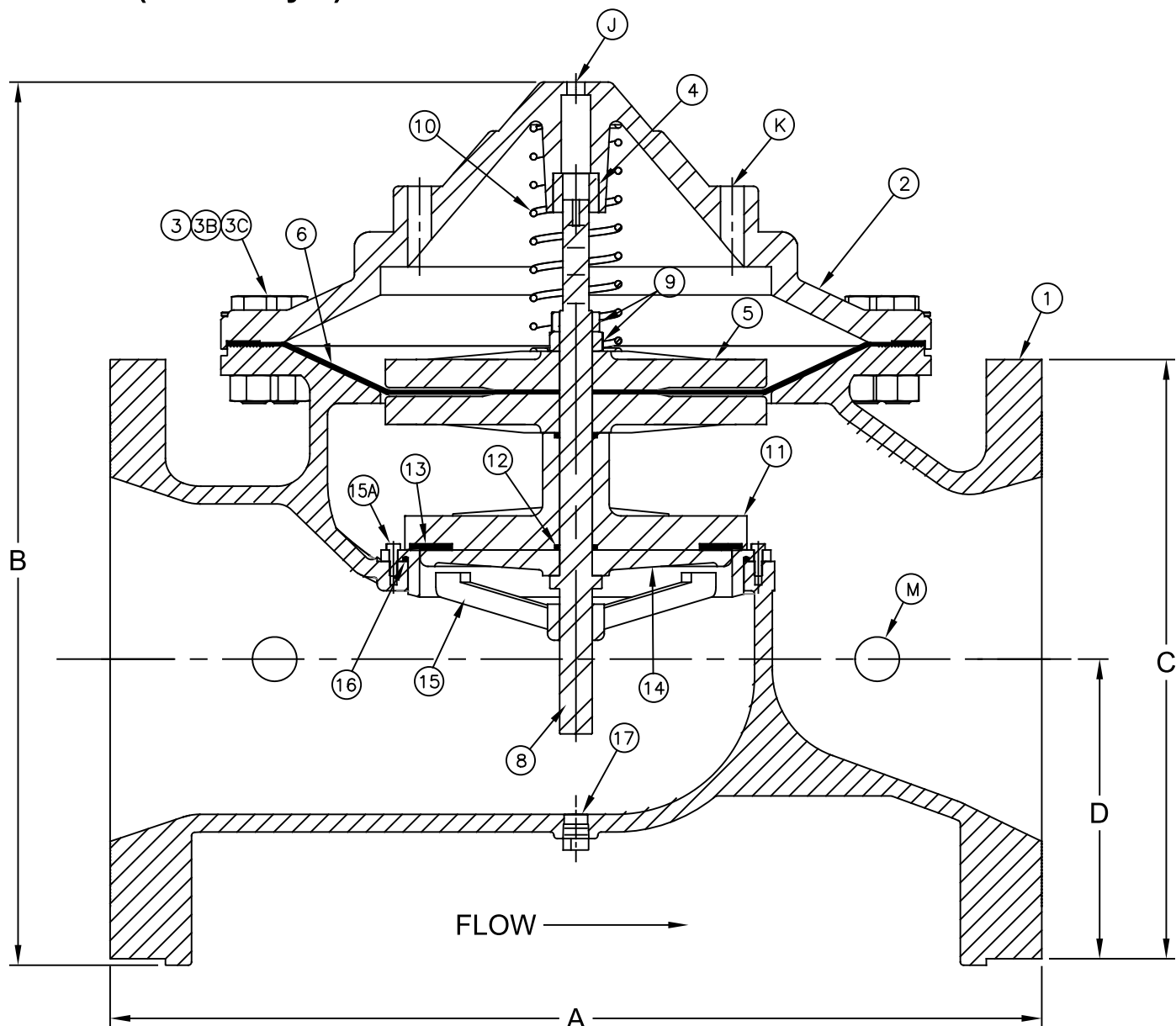


Materials (Globe Style)



Dimensions & Weight

Max Temp 180°F (82°C)
Max Pressure 400psi (28bar)

Flange Standard:
ASME/ANSI B16.42

Size		Part #	A		B		ØC		D		Weight	
inch	mm		inch	mm	inch	mm	inch	mm	inch	mm	lbs	kg
14	350	8471314	34-1/4	870	34	864	22	558	11	279	1181	536

Flomatic Corporation can accept no responsibility for possible errors in catalogues, brochures and other printed material. Flomatic Corporation reserves the right to alter its products without notices. This also applies to product already agreed. All trademarks in this material are property of the respective companies. All right reserved. ©2011 Flomatic Corporation. The drawings & information on this drawing sheet are the sole & exclusive property of Flomatic Corporation. Any reproduction, distribution, display or use of these drawings or information in whole or in part without written authorization of Flomatic Corporation is strictly prohibited.

Control Valve

150# Flange

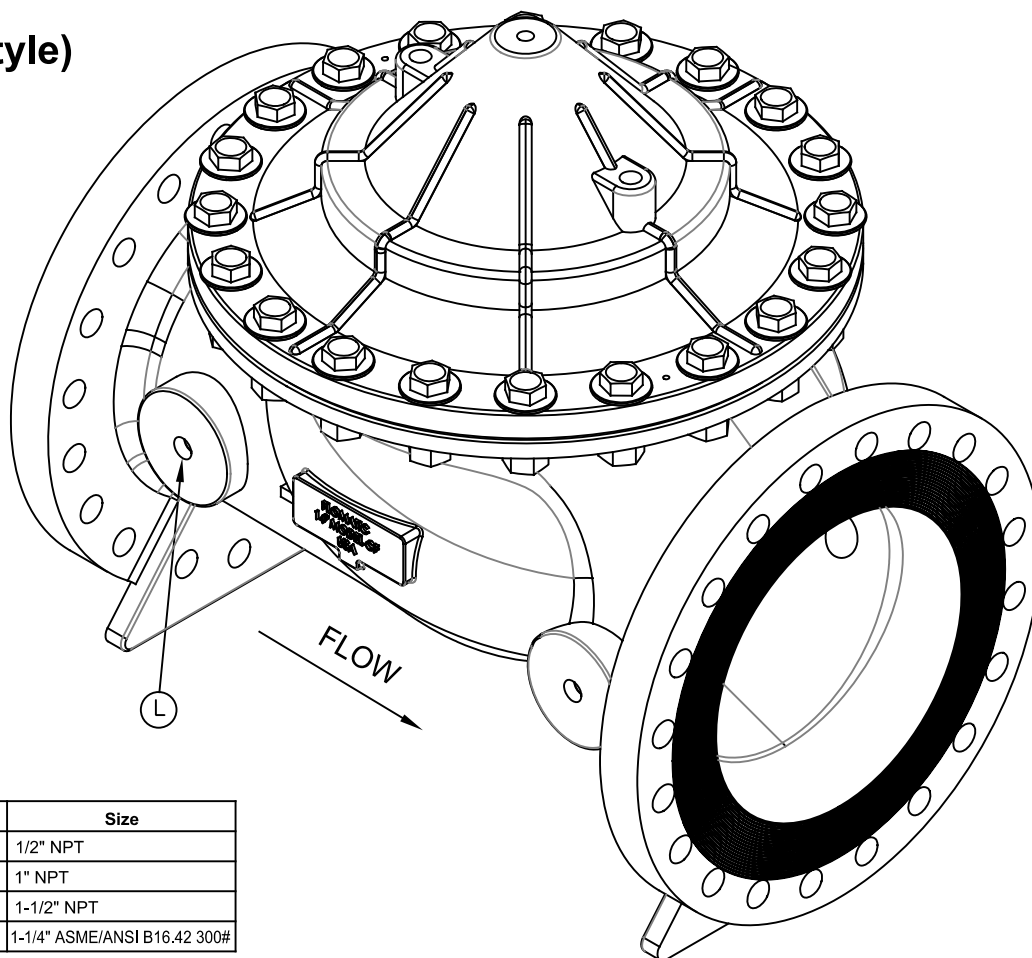
Model CF

FLOMATIC®

Sizes 14" / 350 mm

Flomatic Corporation

Materials (Globe Style)



Control Connections

Item	Qty	Description	Size
J	1	Cover Center Tapping	1/2" NPT
K	2	Cover Tapping	1" NPT
L	2	Body Tapping	1-1/2" NPT
M	2	Backside Flange Tapping	1-1/4" ASME/ANSI B16.42 300#

Items 18-22 Not Shown

Item #	Qty	Description	Material	ASTM	Item #	Qty	Description	Material	ASTM
1	1	Body	Ductile Iron	A536	15A	16	Seat Ring Cap Screws	Stainless Steel	304
2	1	Cover	Ductile Iron	A536	16	1	Seat O'Ring**	Buna-N**	-----
3	20	Cover Bolt	Stainless Steel	304	17	1	Pipe Plug	Steel	-----
3B	40	Cover Washer	Stainless Steel	304	18	1	Serial Number Tag	Brass	-----
3C	20	Cover Nut	Stainless Steel	304	19	2	Grip Nails	Steel	-----
4	1	Cover Bushing	Bronze	B140	20	2	Flange (1-1/4" 300#)	Ductile Iron	A536
5	1	Diaphragm Plate	Ductile Iron	A536	21	2	Flange Gasket	Velumoid	-----
6	1	Diaphragm (Reinforced)	SBR/Polyester	-----	22	8	Flange Bolt	Stainless Steel	304
8	1	Stem	Stainless Steel	304					
9	2	Jam Nut	Stainless Steel	304					
10	1	Spring	Stainless Steel	302					
11	1	Spool	Ductile Iron	A536					
12	1	Spool O'Ring (Stem O'Ring)	Buna-N**						
13	1	Spool Seal (Seat Seal)	Buna-N**						
14	1	Seat Plate	Stainless Steel	316					
15	1	Seat Ring	Stainless Steel	316					

**OPTIONAL EPDM AVAILABLE

Flomatic Corporation can accept no responsibility for possible errors in catalogues, brochures and other printed material. Flomatic Corporation reserves the right to alter its products without notices. This also applies to product already agreed. All trademarks in this material are property of the respective companies. All right reserved. ©2011 Flomatic Corporation. The drawings & information on this drawing sheet are the sole & exclusive property of Flomatic Corporation. Any reproduction, distribution, display or use of these drawings or information in whole or in part without written authorization of Flomatic Corporation is strictly prohibited.