

Flo-Flex®

Series 745

Model 745ASCPIVB

Rubber Flapper Swing Check Series 745

With Optional Features:

- 1 - Assisted Spring Closing (ASC)
- 2 - Position Indicator (PI)
- 3 - Vacuum Breaker (VB)



6" Model 745ASCPIVB Sizes shown
(Patented features)

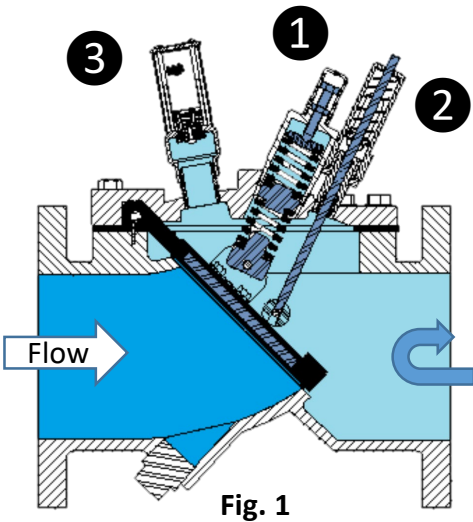


Fig. 1

Operation:

- **Start-up:** The Valve position Indicator (see number 2 in Fig. 1) will move upward and show that the valve disc is opening allowing flow.
- **Shut-Down:** The Valve position Indicator (see number 2 in Fig. 1) will move down and show that the valve disc is closing flow. The Assisted Spring Closing (see number 1 in Fig. 1) will accelerate the valve disc closing and at the same time, the Vacuum Breaker (see number 3 in Fig. 1) will open reducing vacuum in the downstream piping system minimizing hydraulic shock (water hammer).

Valve Adjustment:

- **Shut-Down:** The Valve closing speed can be adjusted by removing the black plastic spring adjustment cap.

Standard Model 745ASC 3" & 4" Swing Check Valve Cracking Pressure (PSI)		
Adjustment Screw	3"	4"
(Turns)	Two (2) Blue Springs	Two (2) Green Springs
All the way out	0.5	0.5
2 turns	1	1.0
3 turns	2	1.3
4 turns	3	1.5
5 turns	3.5	2.0
6 turns	4	2.3
7 turns	4.5	2.3
8 turns	5	2.8
9 turns	-	3.0
10 turns	-	5.0

The **Model 745ASCPIVB** (the position indicator "PI" is only available on valves 6" sizes and larger) allows the operator to have the springs adjusted or changed in the field (see Fig. 2 there are two springs; upper and lower) to match the hydrodynamic conditions without removing the valve body or valve cover from the pipe line.

The chart to the left show "Cracking Pressure" or opening pressure adjustment ranges for the 3" and 4" size valves with standard springs.

Floomatic also offers other color coded springs that can be installed in any combination, to make it easier for the operator to change cracking pressure, (Factory set to 2 psi).

1. Green "A" spring - Light Duty (Part# 9-1608-11)
2. Blue "B" spring - Medium (Part# 9-1608-21)
3. Yellow "D" spring - Heavy Duty (Part#9-1608-36)

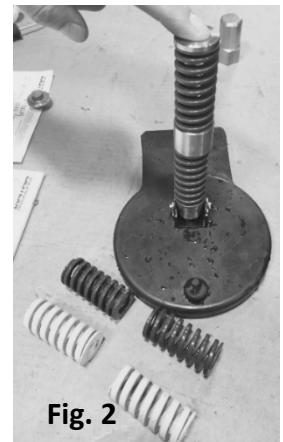
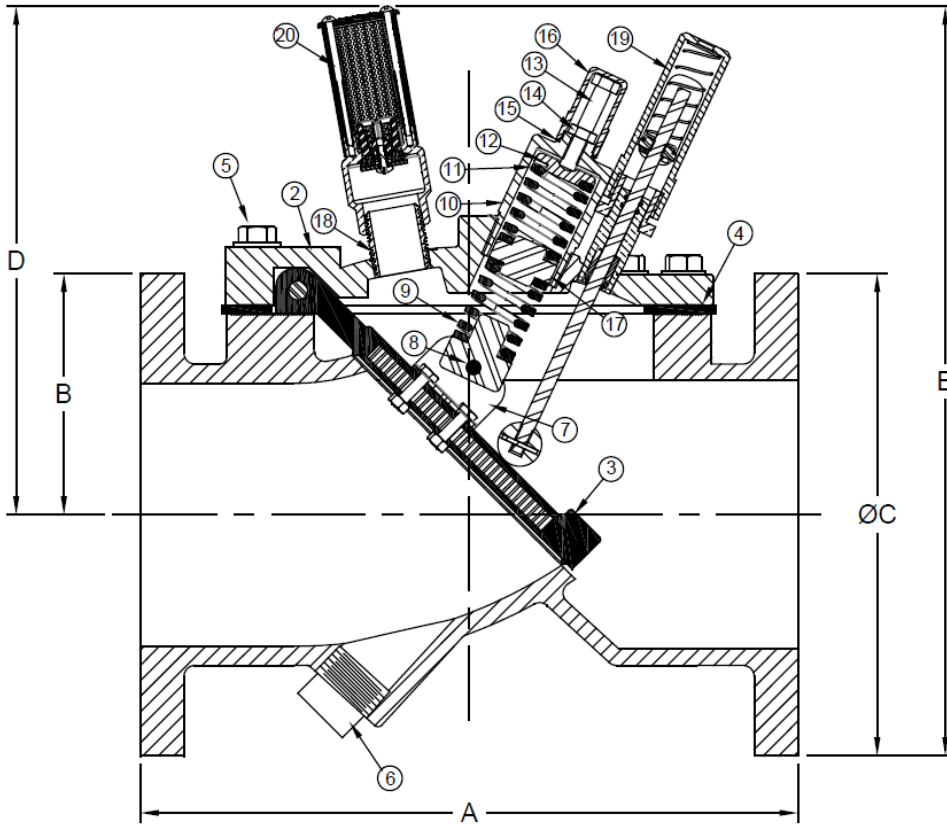


Fig. 2

Example:
4" Model 745ASCPIVB

Sizes 6" / 150mm

Assisted Spring Closure (ASC)



Patent # 9,879,791

Item #	Qty	Description	Material	ASTM	Item #	Qty	Description	Material	ASTM
1	1	Body (Epoxy Coated)	Ductile Iron	A536	11	1	Spring	Stainless Steel	18-8
2	1	Cover (Epoxy Coated)	Ductile Iron	A536	12	1	Spring Button	Stainless Steel	304
3	1	Flapper	Buna coated Steel	-----	13	1	Adjustment Bolt	Stainless Steel	18-8
4	1	Gasket	Buna	-----	14	1	Jam Nut	Stainless Steel	18-8
5	A/R	Cover Bolt & Washer	Steel	SAE Grade 5	15	1	Thread Seal Washer	Stainless Steel/Buna	18-8
6	1	Plug	Malleable Iron	-----	16	1	Cap w/ Seal	Stainless Steel/Nylon	304
7	1	Bracket w/ Fasteners	CRS / SS	Epoxy/18-8	17	1	Stabilizer	Stainless Steel	304
8	1	Pin w/ Cotter Pins	Stainless Steel	304	18	1	Closed Nipple	Bronze	C89833
9	1	Spring Holder	Stainless Steel	304	19	1	Position Indicator	Various	-----
10	1	Spring Housing	Stainless Steel	304	20	1	Vacuum Breaker	Various	-----

Dimensions (150# ANSI B16.5 flanges)

Size	A		B		ØC		D		E		Weight		
inch	mm	inch	mm	inch	mm	inch	mm	inch	mm	inch	mm	lbs	kg
6	150	15	381	5-1/2	140	11	279	11-1/2	292	17-1/8	181	135	61

Flomatic Corporation can accept no responsibility for possible errors in catalogues, brochures and other printed material. Flomatic Corporation reserves the right to alter its products without notices. This also applies to product already agreed. All trademarks in this material are property of the respective companies. All right reserved. ©2018 Flomatic Corporation. The drawings & information on this drawing sheet are the sole & exclusive property of Flomatic Corporation. Any reproduction, distribution, display or use of these drawings or information in whole or in part without written authorization of Flomatic Corporation is strictly prohibited. www.flomatic.com