



INTRODUCING THE 80DIVFD SERIES

The American Made and one of the first-ever Variable Flow Demands (VFD) Check Valve for the Submersible Pump Industry continues to lead the way as the industry's pioneer.

The patented 80DIVFD is uniquely engineered to allow the valve to operate in a wide flow range which typically is the case with VFD controlled pumps.

The exclusive poppet system ensures that the valve automatically closes tight and noiseless after each pump cycle. A self-cleaning seat/stem helps increase service life and the optional Break-Off plug improves convenience when servicing the system.

Available in Bronze, Stainless Steel, and Ductile Iron 1" thru 10", Flomatic's 80DIVFD Series is a clear and reliable choice, another **High Quality Valve Built to Last.**



Continually **improving** the design and production of high **quality valve products** that meet or **exceed** environmental requirements and customer **expectations**

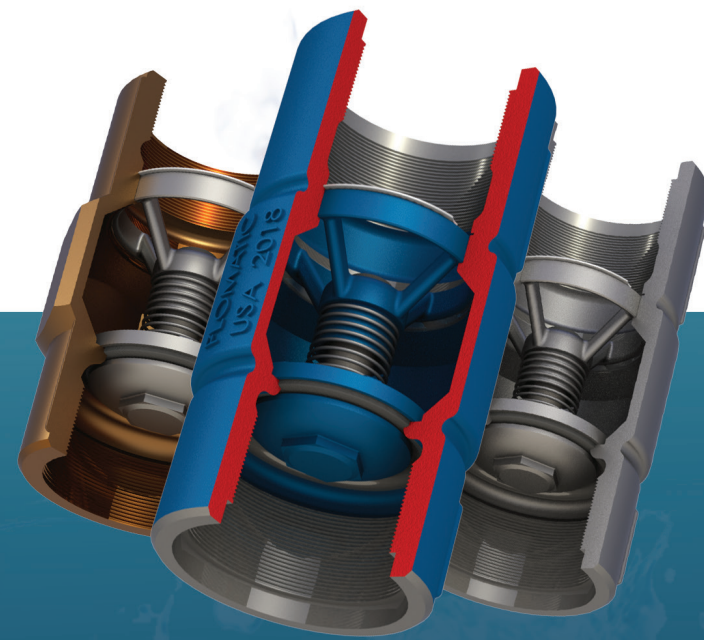
FLOMATIC® VALVES

15 Pruyn's Island Drive,
Glens Falls, NY 12801
800-833-2040
WWW.FLOMATIC.COM

Copyright © 2019
All rights reserved Flomatic Corporation

FLOMATIC® VALVES

High Quality Valves Built To Last...



FLOMATIC SUBMERSIBLE PUMP CHECK VALVES

PATENTED

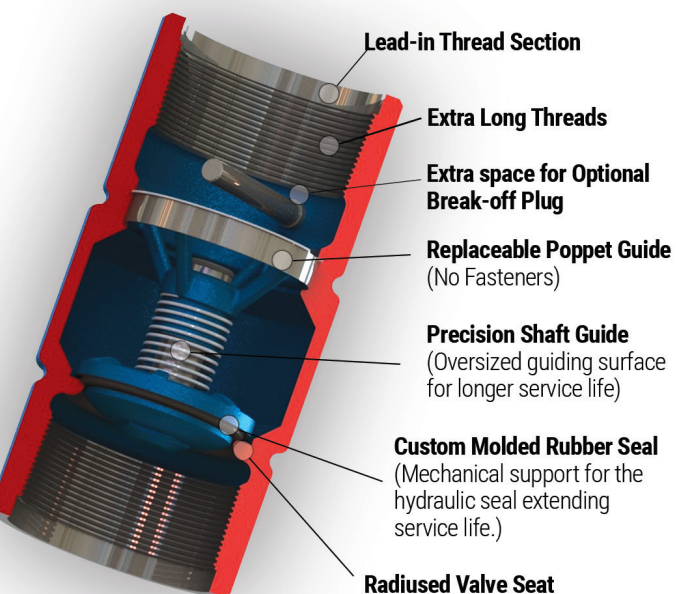
AVAILABLE IN BRONZE, STAINLESS STEEL,
AND DUCTILE IRON 1" THRU 10"



ENGINEERED TO PERFORM FROM THE INSIDE-OUT

SERIES 80DI-VFD

PATENTED



Flomatic is one of the only valve manufacturers that is certified to international ISO 9001/14001 quality management systems.

MORE FLOW

Save Money
(Higher Efficiencies)

NOISELESS

Quiet Operation
(Longer Service Life)

SIMPLE CONSTRUCTION

No Screws, Bolts,
Nuts or "O"-rings

VFD COMPATIBLE

Flexible Installation

& FEATURES & BENEFITS

Low Friction Loss

Noiseless Operation

Stainless Steel Guiding

Strong Ductile Iron, Enviro, or Stainless Steel Body

Corrosion Resistant Internal Components

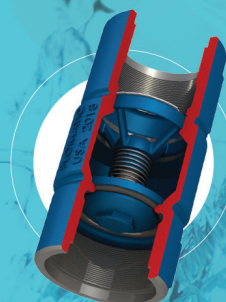
"Pipe Thread-Lead-In" Section

Longer Thread Areas

Optional "Break-Off" Plug

Female by Female, Male by Female, or Male by Male NPT or 8 Round Thread Configurations

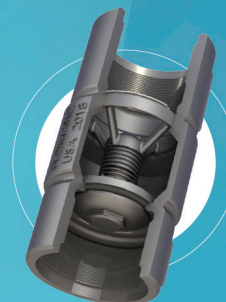
Mechanical Support for the Hydraulic Seal



DUCTILE
IRON



UNLEADED
BRONZE



STAINLESS
STEEL

Additional Flomatic Valve Products Include the 80DI DW - rated 4,300 PSI that can be set at 3,300 feet. Consult with your representative

