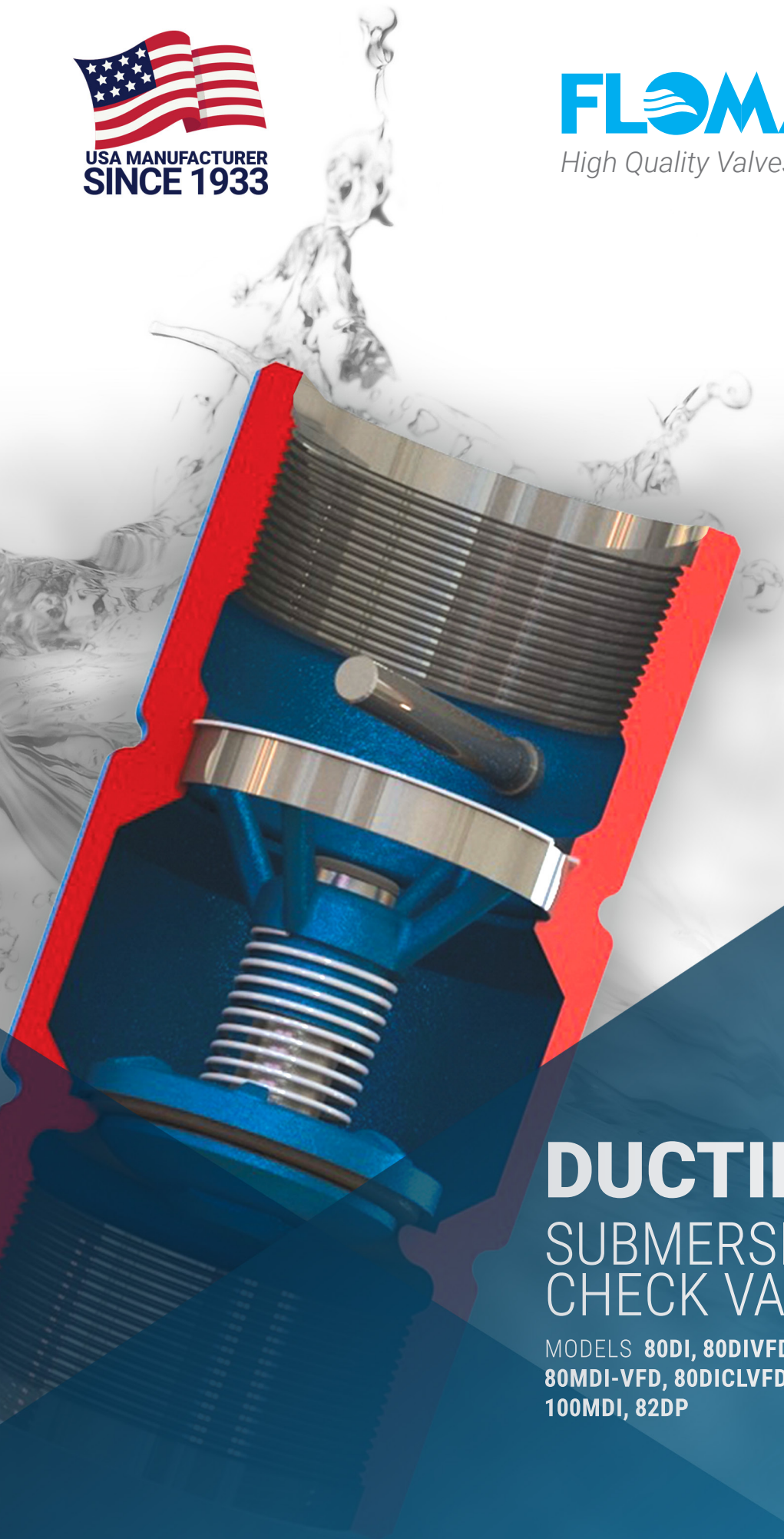




FLOMATIC® VALVES

High Quality Valves Built To Last...



DUCTILE IRON SUBMERSIBLE PUMP CHECK VALVES

MODELS 80DI, 80DIVFD, 82DI-VFD,
80MDI-VFD, 80DICLVFD, 80DI8R-VFD, 80DIX,
100MDI, 82DP

FLOMATIC'S DUCTILE IRON SERIES

For over 50 years, Flomatic's Ductile Iron Check Valves have been an industry-proven favorite. The Ductile Iron series (DI) is an industry proven heavy duty in-line poppet style valve designed to prevent flow reversal. When pumping from a well, water is allowed to flow through the valve and then closes automatically when the pump is shut off to prevent backflow.

Flomatic's DI series are among the most popular valves in the water well industry today. These valves are specifically designed for use with submersible pumps or other applications where it is necessary for the check valve to be installed in a well casing.

FEATURES & BENEFITS

- NSF/ANSI 61 approved
- Low head loss
- Reduces hydraulic shock
- Prevents water flow reversal
- Corrosion resistant internals
- Custom-molded Nitrile (Buna-N) seal

APPLICATIONS

- Domestic well water systems
- Municipal/public water systems
- Irrigation and sprinkler systems
- Booster pump systems



VALVE BODY STRENGTH

Choosing a strong ductile iron check valve can help for a number of reasons. The material chosen determines the lifespan and performance of an application. When a check valve is installed vertically in a riser pipe, the weight of the pipe, water column, and pump below is left hanging on the valve body. In deeper settings, the tensile stress on the valve placed near the surface can be high.

BREAK-OFF PLUGS

Flomatic break-off plugs are specifically constructed for submersible pump check valves. Designed to drain well water in the riser pipe when the submersible pump is pulled for service, these devices greatly reduce the lifting weight of a system by approximately 25% to 50%.

Simple yet efficient, these field-proven break-off plugs are available for ductile iron check valve models 80DI, 80DIVFD, 80DIX, 80DICLVFD, 80DI8R-VFD ranging in sizes 2 inch through 12 inch.

- Simple construction
- Easily field replaceable
- Faster pump servicing
- When servicing the pump, it reduces lifting weight by allowing the water to drain
- Reduces water splashing at the surface

PRODUCT SPECIFICATIONS

- For 2" valve size plug threads are 1/8"
- For 2 1/2" thru 6" plug threads are 3/8"
- For 8" thru 12" plug threads are 1/2" NPT connection



Composite



Stainless Steel

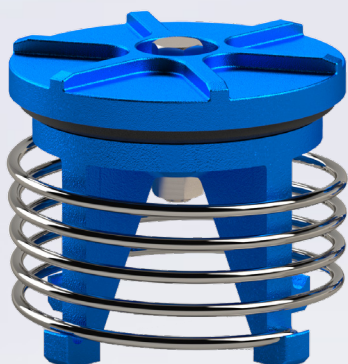


FLOMATIC'S WCR POPPET

(Warranted Check Reliability)

With over 4 decades of industry proven results and millions of poppets in operation worldwide, Flomatic's revolutionized patented WCR® poppets are a favorite among contractors.

- Helps eliminate sticking
- Provides a smooth & stable operation
- Includes a self-cleaning seat
- Features an anti-spin design



2" AND OVER ASSEMBLY



UNDER 2" ASSEMBLY

FLOMATIC'S VFD POPPET

(Variable Flow Demand)

Engineered to perform from the inside-out, Flomatic's patented Variable Flow Demand (VFD) Check Valves are uniquely manufactured for **long service life and consistent operation across a very wide range of flow rates to meet the high demand of VFD systems.**

Flomatic's VFD Check Valves feature high-strength internals including a replaceable poppet guide, bushing, and a radius valve seal:

- Long lead-in threads
- Operates efficiently under low flow conditions
- Smooth and steady operation
- Extends the service life of a pumping system
- Can be installed vertically or horizontally
- Can be used in VFD & non-VFD systems



UNDER 2" ASSEMBLY



2" AND OVER ASSEMBLY



MODEL 80DI

The 80DI family features a strong lead-in thread section, ductile iron poppet system, and corrosion-resistant internals such as a stainless steel spring and fasteners.

Features a threaded female x female connection. 2 ½" valves and larger: recommended for vertical applications only. Please see Flomatic's 80DIX or VFD design for horizontal applications.

Note: 1" through 1 ½" features acetal poppet.



TEMP MAX: 180°F (80°C)



PRESSURE MAX: 400 PSI
1 - 1 ¼", 600 PSI: 2" - 8"



SIZES: 1" THRU 8"



MODEL 80DIX

High strength epoxy coated ductile iron body features a double-guided ductile iron poppet. Designed for vertical and horizontal applications.

See 80DI or 80DIVFD for high capacity flow.



TEMP MAX: 180°F (80°C)



PRESSURE MAX: 400 PSI



SIZES: 3" THRU 12"



MODEL 100MDI

Features male threaded inlet and female threaded outlet. Ideal for submersible pumps.



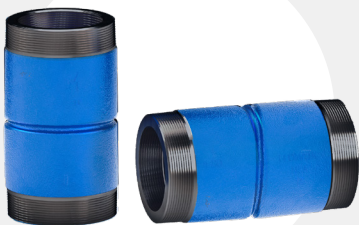
TEMP MAX: 180°F (80°C)



PRESSURE MAX: 400 PSI



SIZES: 1 ¼" THRU 2"



MODEL 82DP

Dual-purpose compact ductile iron reduced ported check valve with female and male threads on both ends. Manufactured for tight-fitting wells.

Note: RESTRICTED FLOW - REDUCED PORTED, SEE VFD MODEL FOR FULL PORTED, HIGH FLOW DESIGN.



TEMP MAX: 180°F (80°C)



PRESSURE MAX: 600 PSI



SIZES: 2 ½" THRU 5"

INSTALLATION

To prevent long-term wear and tear of stress to the valve and pumping system, ductile iron check valves must be installed according to Flomatic's installation instructions.

A check valve should never be installed more than 25 feet above the lowest expected pumping water level in the well. In deep settings below 400 feet, valves should be spaced out a maximum 200 foot intervals to keep opening and closing pressures within reasonable limits.





MODEL 80DI-VFD

Uniquely engineered to allow the valve to operate in a wide flow range which typically is the case with VFD controlled pumps. The exclusive poppet system ensures that the valve automatically closes tight and noiseless after each pump cycle. A self-cleaning seat/stem helps increase service life.

Features a threaded female NPT connection. Specifically designed for horizontal or vertical installation for uninterrupted service.



TEMP MAX: 180°F (82°C)



PRESSURE MAX: 600 PSI



SIZES: 1" THRU 10"



MODEL 82DI-VFD

Features a male x male connection. Specifically designed for vertical or horizontal applications.



TEMP MAX: 180°F (80°C)



PRESSURE MAX: 600 PSI



SIZES: 2" THRU 8"



MODEL 80MDI-VFD

Features a male x female NPT connection. Designed for vertical or horizontal applications.



TEMP MAX: 180°F (80°C)



PRESSURE MAX: 600 PSI



SIZES: 1 1/4" THRU 6"



MODEL 80DICLVFD & 80MDICLVFD

Ductile iron check valve incorporates grooved locking Certa-Lok® pipe connections. Fusion epoxy coated inside and out including poppet assembly, this valve is corrosion resistant and unleaded. High strength ductile iron body with stainless steel spring and Nitrile (Buna-N) seal.

Certa-Lok® by Certa-Lok® or Certa-Lok® by male connection on the inlet side configurations available.

Consult factory for specifications.



TEMP MAX: 180°F (80°C)



PRESSURE MAX: 400 PSI



SIZES: 2" THRU 8"



MODEL 80DI8R-VFD 8 Round Short Line Pipe Threads

Featuring a patented high strength epoxy coated ductile iron body, poppet, and guide with 8 round female threaded connections. Includes a Nitrile (Buna-N) seal with a stainless steel shaft. Designed for vertical or horizontal applications.

Line Pipe Thread 8 Round (Sch. 40 & 80) - LP-API 5B Table 3



TEMP MAX: 180°F (80°C)



PRESSURE MAX: 600 PSI



SIZES: 3" THRU 8"

FLOMATIC® VALVES

Designing, Developing, and Manufacturing
The Most Complete Line of Valves for Water and Wastewater Applications
in The United States



FIND OUR COMPLETE VALVE OFFERING AT
WWW.FLOMATIC.COM

LIMITED ONE YEAR WARRANTY: The Flomatic Corporation warrants that its Ductile Iron Check Valves in all sizes are free from defects in materials and workmanship. Flomatic will replace any valve covered by this warranty found to be defective within one year from time of sale. This warranty will be void if the product has been modified in any way by the purchaser, or is subject to unreasonable use.

All rights reserved © 2022 Flomatic Corporation

FLOMATIC CORPORATION

15 Pruyn's Island Drive, Glens Falls, New York 12801
Phone: (800) 833-2040, Fax: (800) 314-3155

