

Wastewater Valve Application

Flomatic Ball Check Valves

Pump Stations Kuau, Maui

The wastewater station pump and valve project covered under this contract was performed at several existing Pump Stations in Kuau and Paia, Maui, Hawaii.

Attached (Fig. 1A & 1B) shows the internal seat area of a leading valve competitor in a 6" size swing check following a typical seat failure (various rag debris in the lower seat area). Swing check valves are not as reliable today as they once were due to the consistency of "modern trash" and the phenomena called "roping". A Flomatic's ball check valve 6", Model 408PRX installation in the same installation is shown in (Fig. 2A & 2B) with a clean seat area and with no sealing failures. The Flomatic Model 408 Ball Check Valves provide a longer service life with less maintenance and hydraulic losses.

The Flomatic ball check valves' simple and reliable operation prevents modern trash from interfering with its operation. The valve has an anti-roping design so nothing can build-up down-stream from the self-cleaning ball function. The valve is designed to the Standard AWWA flange to flange dimensions as a swing check valves, allowing for easy system valve up-grade. The Flomatic Ball Check valves are, for decades, proven as they are specially designed for the nature of wastewater and the system dynamics. The Flomatic ball check valves are especially designed for corrosive applications, coated with a baked-on NSF approved epoxy coating with no exposed cast surfaces or threaded bolt holes as the swing check valves have.

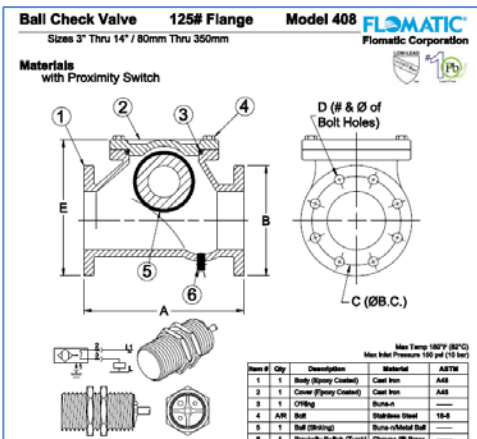


Fig. 1 A



Fig. 2

The optional proximity switch, Model 408PRX, is popular and prevents faulty pump start-ups and failures. The proxy switches, with onboard LED light, visually indicates to a service team and/or electronically will signal the valves open/closed position, preventing accidental pump start-up in reverse. Frequently wastewater pumping stations are "Duplex-stations" with two pumps, and running the pumps automatically is important and the proxy



switch will improve on the systems performance and minimize accidental pump start-ups when pumps or valves are clogged.



Fig. 1 B



Fig. 2 B

Flomatic provides a simple, proven Ball Check design that has served the wastewater industry for several decades. Flomatic is valve manufacturer, since 1933, offers a wide cross section of valve products in a size range though 36" (900 mm).

FLOMATIC VALVES

Flomatic Corporation, 15 Pruyn's Island Drive, Glens Falls, New York 12801-4424

Phone: 1-800-833-2040 Fax: 518-791-9798

www.flomatic.com

High Quality Valves Built to Last . . .



Flomatic is a proud member of:



Submersible Wastewater Pump Association