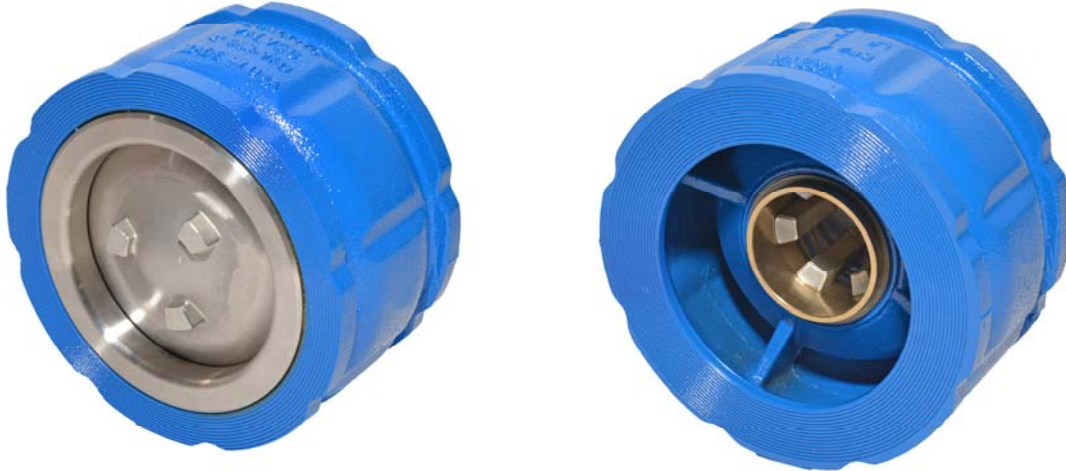


Flomatic Corporation

15 Pruyn's Island Drive
Glens Falls, NY 12801-4421
Tel: 800-833-2040
Direct Tel: (518) 761-9797
Direct Fax: (518) 761-9798
www.flomatic.com



Glens Falls, NY – Flomatic Corporation introduces a new **Model 888VFD Wafer Style Check Valve**. This new wafer check valve is available in 2" – 4" with a 316 Stainless Steel guide and seat with EPDM elastomer disc standard, patent pending. The Model 888VFD valve is designed for simple flange supported installation and will operate equally well in any position and is suitable for ANSI 150# or 300# mounting. Standard check valves will "chatter" and be noisy when a VFD goes to low flow, causing premature wear and eventual failure. The double guided spring loaded poppet system maximizes efficiency and minimizes water hammer with an easy field exchangeable internal system. The Model 888VFD is recommended for Booster Pump Systems, Mechanical Contractors, general utilities, Irrigation systems and HVAC liquid service.

For more detailed information on Flomatic's new **Model 888VFD** check valve or to obtain a copy of the new 2017 condensed valve catalog, visit www.flomatic.com, email them at flomatic@flomatic.com, call Flomatic Corporation at 1-800-833-2040 or fax them at 1-800-314-3155.

Flomatic Corporation

High Quality Valves Built to Last. . .