

MODEL 345

FLO-FLEX® - FOOT VALVE

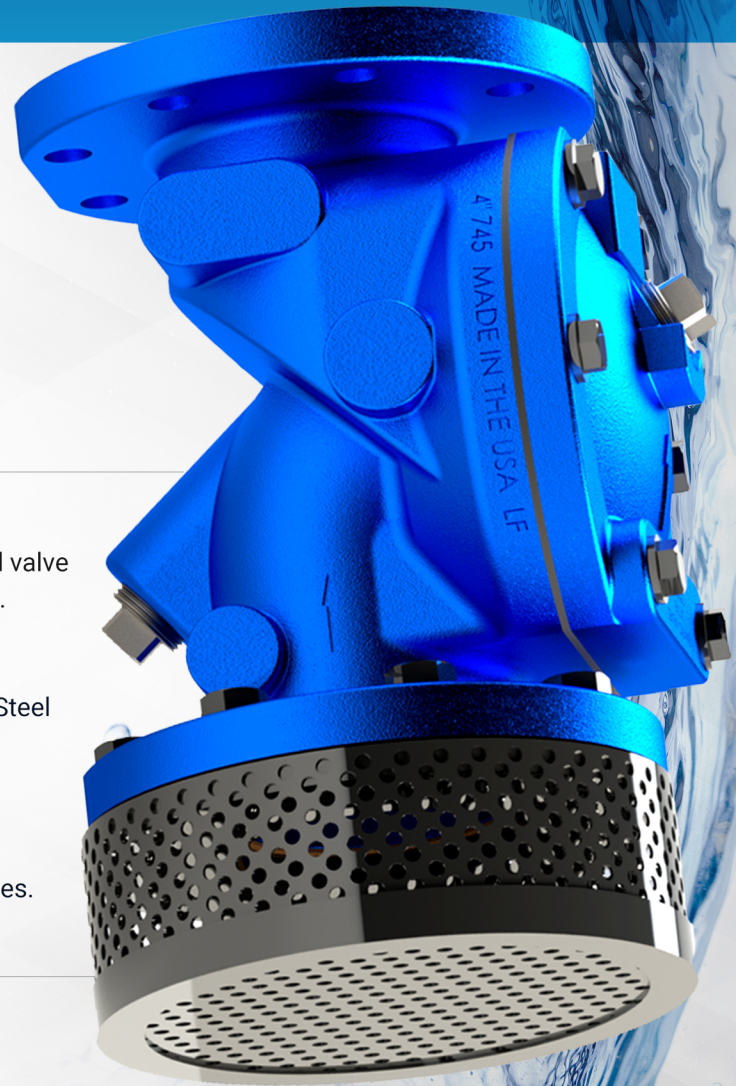
AIS COMPLIANT*



Flomatic's Flo-Flex® Foot Valve, Model 345 is designed to meet demanding pumping applications. This Flomatic full ported foot valve is constructed in an all Ductile Iron Body, Fusion Bonded Epoxy Coated for Corrosion Resistance, with a 316 Stainless Steel Strainer, and Class 150 flanged connections.

The screen open flow area is designed to be 3 to 4 times the open area of the nominal pipe size; while the one-piece molded disc allows 100% uninterrupted flow in the open position.

For use in industrial/municipal pumping applications such as ponds and lakes, de-watering applications, frac pits, etc.



- **FLO-FLEX® PERFORMANCE**

45° angle quick closing drop-tight valve seat. The Precision molded valve disc of one piece construction is covered under a 25-year warranty.

- **AIS COMPLAINT ***

Model 345 Ductile Iron body complies with the American Iron and Steel Act (AIS). Stainless Steel Screen Components are available AIS compliant on request.

- **TIGHT SEAL - LOW HEADLOSS**

Specifically designed to seal tight and minimize pump suction losses. This valve is ideal for demanding centrifugal pump applications.

ADDITIONAL FEATURES

- Fusion Bonded Epoxy Coated Inside / Outside
- Certified Low Lead by independent laboratories
- Can be installed horizontally (cover on up) and vertically (flow-up)
- Nylon Reinforced Buna-N encapsulated valve disc with integral "O"-ring; assuring "drop tight" sealing
- Long rubber disc life - 25 year warranty



MODEL 345 FLO-FLEX® - FOOT VALVE PRODUCT SPECIFICATIONS



PRODUCT SPECIFICATION

- Sizes: 3" - 12"
- Max Pressure: 250 PSI
- Max Temperature: 140° F (60°C)

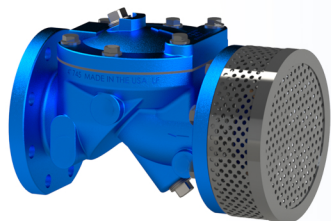
PRODUCT WARRANTY

- Flomatic standard one year valve product warranty applies. See price list for warranty information.

PRODUCT INSTALLATION



VERTICAL INSTALLATION
Flow Up

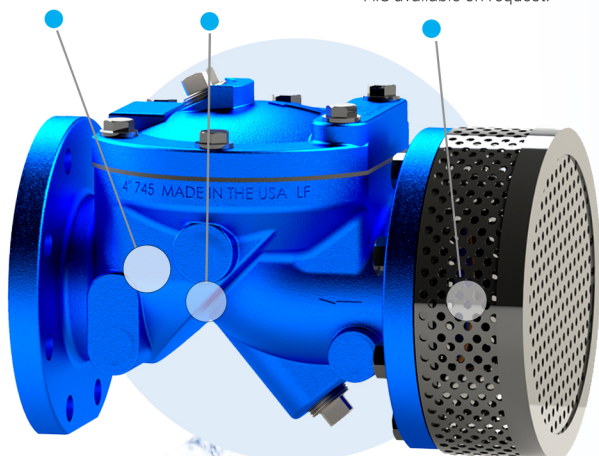


HORIZONTAL INSTALLATION
Cover Must Face Upwards

Lead-Free Construction
and AIS Compliant
Ductile Iron Body

45° Seat Flo-Flex®

316 Stainless Steel Strainer.
AIS available on request.



CONSTRUCTION MATERIALS

Item #	Qty	Description	Material	ASTM
1	1	Body (Epoxy Coated)	Ductile Iron	65-45-12
2	1	Cover (Epoxy Coated)	Ductile Iron	65-45-12
3	1	Valve Disc	Buna	----
4	1	Gasket	Buna	----
5	A/R	HHCS	Stainless Steel	304
6	A/R	Washer	Stainless Steel	304
7	1	Pipe Plug	Stainless Steel	304
8	1	Screen	Stainless Steel	316



PRESSURE MAX - 250 PSI



TEMP MAX - 140°F



SIZES 3" - 12"

